

Progress Brand Garments are for every man

Whether you are tall or short—stout or thin—"big" around or "big" up and down—you can get just the Suit that suits your style and your physique in Progress Brand Clothing.



Look for the label that guarantees satisfaction.

Sold and Guaranteed by PROWSE BROS.

GOOD DAY SIR!

Whose tobacco are you using? TRY OURS if you want the best. Hickey & Nicholson Tobacco Co., Ltd.

GUARDIAN BUSINESS LOCALS

MORNING DAILY OR RURAL DAILY PER WORD (six words to each line) one cent for one insertion, two cents for three insertions, four cents a week, six cents for two weeks, ten cents for three weeks, sixteen cents a month, twenty cents for two months, thirty cents for three months, thirty six cents for six months, and sixty cents a year.

Compare and Lowney's Chocolate, now stock in latest refined packages. A. W. Reddan, Phone B. 2-2636.

Pretty and fashionable dress models are to be had at bargain prices in our Wash goods section. Do not fail to see them. M. Trainor & Co. 7-23dt

See our ad for bargains in men's furnishings. See our window for bargains in men's straw and linen hats. 1-3 off all in stock. M. Trainor & Co. 7-23

Avail yourself of the present opportunity to secure an extra bag. We are giving 1-3 off low prices already placed on our millinery. Many handsome ones to select from for ladies or misses. M. Trainor & Co.

GUARDIAN CLASSIFIED ADS

Co-operative insertion only. Headings arranged alphabetically. MORNING DAILY OR RURAL DAILY PER WORD (six words to each line) one cent for one insertion, one cent for three insertions, two cents a week, three cents for two weeks, four cents for three weeks, five cents a month, eight cents for two months, ten cents for three months, eighteen cents for six months and thirty cents a year.

FEMALE HELP

WANTED—An honest, industrious girl for second work in small family. Experience not necessary, as girl will be taught every branch of the work. Good wages and steady place. Write, stating age, experience, if any, and references. Mrs. H. A. Jones, Box 451, Cohasset, Mass., 8-27dlw.

WANTED—A general servant. Enquire at 45 Euston St. 8-27dr3pd.

WANTED—A competent girl for general housework, an elderly person preferred. Apply Mrs. W. F. Carter, Confectionery, Queen St. 8-25dtf.

WANTED—Two girls for general housework at the King Edward Hotel. 8-27dlw.

HELP WANTED—At once several good table girls, two chamber maids, also two good smart bell boys. Apply at Hotel Victoria. 7-11dtf.

WANTED—A servant for general housework must be able to do plain cooking. Good wages. Apply to 194 Prince St. 6-30dtf.

WANTED—A girl for general housework. Apply at Wonderland between the hours 10 and 11 a.m. and 8 to 10 p.m. 7-29dtf.

WANTED—An experienced sales lady for dry goods store. Apply to M. Trainor & Co. 6-30dtf.

MALE HELP

ENGINEER—Wants position. Massachusetts State license. Experience electricity. F. W. Prowse, City. 8-22dlw.

BOY WANTED—Smart steady boy about 16 years of age, one who understands looking after horses and cattle, and can make himself generally useful about a house. Apply at this office. 7-8dtf.

WANTED—At once, a boy about 16 years of age to learn a trade. Must have a fair education and good habits. \$2.50 a week at beginning. Leave name, age and particulars at Guardian office. 6-27dtf.

HORSE SHOERS all kinds white or black shoes. You want at J. A. Henderson's.

AS A RESULT OF THE UNIVERSAL SYSTEM OF SHORTHAND—the system used by REPORTERS and EXPERTS—the CHARLOTTETOWN BUSINESS COLLEGE is able to supply from its classes VERBATIM REPORTERS for meetings and conventions. A GOOD SYSTEM IN THE HANDS OF EXPERT TEACHERS YIELDS EXCELLENT RESULTS 10-10dtf

Canadian wall paper factories introduced the flat price system of selling wall paper and borders for the same price over one year ago. Immediately upon this action of the factories this store commenced selling borders at the same price as walls—months before any announcement of the fact was made—thus introducing this great improvement.—Moore & McLeod. 5-30 dtf

MISCELLANEOUS

WANTED—A position in grocery store—experienced. Write M., P. O. Box 964. 8-25dlw.

WANTED—Agents on P. E. Island. Two new articles. Good sellers. Big profits. Particular for stamps. Samples 35 cents. Business Box 291, Moncton, N. B. 8-26dr10lpd.

THE—Charlottetown School of Music will reopen on Tuesday September 1st. Application for hour may be made to the director, W. Harry Watts. 8-18dtf.

A FILE of this paper can be seen at the office of Messrs E. & J. Hardy & Co., 30, 31, and 32 Plee Street, London, England, free of charge, and that firm will be glad to receive news, subscriptions, and advertisements for the Charlotte town Guardian. 2-24dtf.

FOR SALE—Second hand butter tubs. Apply at Guardian office. 8-27dlw.

FOR SALE—A pneumatic-tire trotting sulky, almost new. Apply to Mrs. D. E. Hooper, Euston St. 8-27dtf.

FOR SALE—Two sets blacksmith's tools, shoeing stocks, cold chisel, setter, hand saw, hard and soft wood plank, sleigh runners, woodsleigh and cart wheels. Apply to F. C. Prowse, 232 Richmond Street, City. 8-18dr2wpd.

FOR SALE—A second hand bicycle. Apply to W. D. Irving, Sec'y of Trustees. 8-8dtf.

TEACHERS

WANTED—For Winslow North school teacher, male preferred. Supplement \$30.00. Apply to Jas. A. Shaw, Sec'y of Trustees. 8-8dtf.

TEACHER WANTED—For Cape Bear School No. 07. First or second class. Supplement fifty dollars. Apply to W. D. Irving, Sec'y of Trustees. 7-28dtf.

BOARDERS

BOARDERS—Wanted at 73 Chestnut St. Students accommodated at reasonable rates. 8-26dlw.

CALENDAR FOR AUGUST 1908

Table with columns for Day of Week, Sun, Moon, High, Low, and various astronomical data for August 1908.

CHARLOTTETOWN MARKETS

Table listing market prices for various goods such as Beef, Flour, Oatmeal, Cabbage, etc.

Cleanliness is Next to Godliness

If you want your home thoroughly clean and healthy, have it done scientifically. Ordinary disinfectants give only a false sense of security. Microbes and bacteria lurk beyond the reach of the most particular housewife. I use only the latest approved method which is a perfect germicide and endorsed by all Boards of Health and Health Officers. Charges moderate. G. D. Wright, Funeral Director and Embalmer.

The Horse, Cattle, Sheep, Swine, Poultry and Dairymen

also the Farmer his wife sons and daughters are asked to note the dates of the great Inter-Provincial Exhibition.

Inter-Provincial Exhibition - At - Charlottetown, Sept. 22 to 25 1908.

Open to the Maritime Provinces.

Over \$6000.00 in Exhibition Prizes

Three days Horse Racing

three classes each day

\$2100 in Race Purses

Special attractions in front of the Grand Stand.

If you have not received the Prize List or Race Program write the Secretary.

Lowest Rates on Railways and Steamboats.

For full particulars write.

C. R. SMALLWOOD

Secy Treas

Charlottetown P. E. I.

8-27dtfstr5jrw5j.

Arthur J. B. McIlish, B.A. (HARVARD)

Barrister and Attorney-at-Law

(Corner Queen and Richmond Sts., Ch. Town)

Telephone House 555 016

1908 Quebec Steamship Company Ltd

Proposed Sailing S. S. CAMPANA From Montreal and Quebec

Calling at Father Point, Gaspe, Mal Bay, Perce, Grand River, Summerside, Charlottetown and Pictou.

From Montreal at 4 p.m.

Monday, August 24th

Monday, 14th Sept.

Monday, 26th Sept.

Monday, 10th Oct.

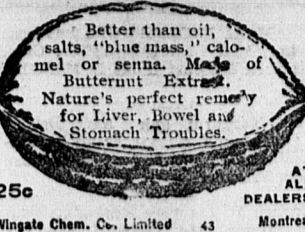
Saturday, 24th Oct.

Saturday, 7th Nov.

Subject to change should circumstances require.

For further information apply to 81dtf18ep39

McGale's Butternut Pills



Better than oil, salts, "blue mass," calomel or senna. Made of Butternut Extract. Nature's perfect remedy for Liver, Bowel and Stomach Troubles.

25c AT ALL DEALERS

Wingate Chem. Co. Limited 43 Montreal

F. C. WESLEY CO

DESIGNERS, ENGRAVERS, ELECTROTYPERS

St. John N. B.

HOTEL BRUNSWICK

MONCTON, N. B.

The largest and Best Located House in the City. Accommodating 200 guests situated in the centre of spacious grounds and surrounded by elegant shade trees making it specially desirable for tourists in the summer season.

GEO. McSWRENEY Prop.

IRA J. YEO, M. D., C. M.

(Graduate McGill University)

Physician and Surgeon.

OFFICE—Kent St., next door to McDonald & McKinnon, druggists.

OFFICE HOURS. 8-10 a.m.; 12-2 and 7-8 p.m.

TO LET

That well known house fronting on King square containing ten rooms with frost proof cellar heated by hot water and all other modern improvements. The above house has been repaired by painting and papering in first class manner. Possession immediately. Apply to EDWARD KELLY 125 Sydney St. 11dtfstr

Cleanliness is Next to Godliness

If you want your home thoroughly clean and healthy, have it done scientifically. Ordinary disinfectants give only a false sense of security. Microbes and bacteria lurk beyond the reach of the most particular housewife. I use only the latest approved method which is a perfect germicide and endorsed by all Boards of Health and Health Officers. Charges moderate. G. D. Wright, Funeral Director and Embalmer.

The St John and Boston All Rail Line

The fast mail route between P. E. Island and the United States

Only 23 hours from Summerside to Boston via St. Empress and All Rail Line.

Passengers from the Island connect with the Provincial Express, which leaves St. John 6:50 p.m. arriving in Boston 8:45 next morning.

Train equipment of the highest order is the claim of the All Rail Line—New vestibule cars, built expressly for this service at the Pullman Car Works in Chicago run between St. John and Boston without change.

Pullman Sleeping Cars between St. John and Boston and Dining Cars between Bangor and Boston.

Returning trains leave Boston at 7 P.M. daily except Saturday.

G. A. FREEZE

Provincial Agent M C & B & M Railroads.

Moncton, N. B.

July 11, 1908

7-11dtfstrmwf3m.

INTERCOLONIAL RAILWAY

Canadian National Exhibition, TORONTO.

August 29 to September 14th, 1908

Return tickets from all stations, Campbellton, and East, including the Prince Edward Island Railway.

FIRST CLASS ONE WAY FARE

August 27, 29 and 31—Sept. 1, 2, 3, 8, 9, and 10.

SPECIAL EXCURSION

FARES TO TORONTO.

August 28th, and Sept. 1th.

From Charlottetown 19.35

All tickets good to return, leaving Toronto, September 16th, 1908.

Dominion Atlantic Railway

and Steamship Lines to Boston via Yarmouth.

The popular East Line

between Eastern Nova Scotia and Boston via Truro, Windsor, and Halifax Express.

HALIFAX EXPRESS—Leaves Halifax at 7:00 a.m. and 8:30 a.m. for Digby and Yarmouth making connection at Yarmouth for Boston.

MIDLAND DIVISION—Trains of the Midland Division leave Windsor daily except Sunday for Truro at 7:25 a.m. and 4:15 p.m. and connecting Truro with trains of the Intercolonial Railway at Yarmouth for Boston.

PRINCE GEORGE and PRINCE ARTHUR

The fastest and finest steamers plying between the Maritime Provinces and Boston.

Leave Yarmouth for Boston daily except Sunday on arrival of Express Train from Halifax. Returning leave Len Wharf Boston, daily except Saturday.

Passengers arriving in Halifax next day at 12:30 p.m. and connecting with Express Train to Boston.

For full particulars apply to P. G. PARKER, Actg. Gen. Pass. Agt. Royal Nova Scotia.

P. G. PARKER, General Manager

7-11dtfstrmwf3m.

McLeod & Bentley

Barriers and Attorneys-at-law.

Solicitors for the Bank of Nova Scotia

Money to Loan

OFFICES—Nova Scotia Chambers.

Hotel Dufferin

ST. JOHN, N. B.

Foster Bond Co.

J. H. BOND, Manager

Fire Insurance

For rates in the P. E. Island Mutual Fire Insurance Companies on Farm Buildings, Churches, Halls, Schools, Houses, Cheese Factories, Water Mills, etc. apply to C. D. BELL, 120 Kent St. Charlottetown

P. E. I. RAILWAY

Commencing Monday, June 22nd, 1908 trains of this Railway will run as follows:

Trains Outward Trains Inward

Read up Read up

Tu. Mo. Di. Di. Tu. Tu. Mo. Di. Di. Tu.

St. Fr. Su. Su. Stations. Su. Su. Fr. Su.

P.M.A.M. P.M.A.M. A.M.P.M.P.M.A.M.

6:00 6:30 7:00 7:30 8:00 8:30 9:00 9:30

6:00 6:30 7:00 7:30 8:00 8:30 9:00 9:30

6:00 6:30 7:00 7:30 8:00 8:30 9:00 9:30

6:00 6:30 7:00 7:30 8:00 8:30 9:00 9:30

6:00 6:30 7:00 7:30 8:00 8:30 9:00 9:30

6:00 6:30 7:00 7:30 8:00 8:30 9:00 9:30

6:00 6:30 7:00 7:30 8:00 8:30 9:00 9:30

6:00 6:30 7:00 7:30 8:00 8:30 9:00 9:30

6:00 6:30 7:00 7:30 8:00 8:30 9:00 9:30

6:00 6:30 7:00 7:30 8:00 8:30 9:00 9:30

6:00 6:30 7:00 7:30 8:00 8:30 9:00 9:30

6:00 6:30 7:00 7:30 8:00 8:30 9:00 9:30

6:00 6:30 7:00 7:30 8:00 8:30 9:00 9:30

6:00 6:30 7:00 7:30 8:00 8:30 9:00 9:30

6:00 6:30 7:00 7:30 8:00 8:30 9:00 9:30

6:00 6:30 7:00 7:30 8:00 8:30 9:00 9:30

6:00 6:30 7:00 7:30 8:00 8:30 9:00 9:30

6:00 6:30 7:00 7:30 8:00 8:30 9:00 9:30

6:00 6:30 7:00 7:30 8:00 8:30 9:00 9:30

6:00 6:30 7:00 7:30 8:00 8:30 9:00 9:30

6:00 6:30 7:00 7:30 8:00 8:30 9:00 9:30

6:00 6:30 7:00 7:30 8:00 8:30 9:00 9:30

6:00 6:30 7:00 7:30 8:00 8:30 9:00 9:30

6:00 6:30 7:00 7:30 8:00 8:30 9:00 9:30

6:00 6:30 7:00 7:30 8:00 8:30 9:00 9:30

6:00 6:30 7:00 7:30 8:00 8:30 9:00 9:30

6:00 6:30 7:00 7:30 8:00 8:30 9:00 9:30

6:00 6:30 7:00 7:30 8:00 8:30 9:00 9:30

6:00 6:30 7:00 7:30 8:00 8:30 9:00 9:30

6:00 6:30 7:00 7:30 8:00 8:30 9:00 9:30

6:00 6:30 7:00 7:30 8:00 8:30 9:00 9:30

6:00 6:30 7:00 7:30 8:00 8:30 9:00 9:30

6:00 6:30 7:00 7:30 8:00 8:30 9:00 9:30

6:00 6:30 7:00 7:30 8:00 8:30 9:00 9:30

6:00 6:30 7:00 7:30 8:00 8:30 9:00 9:30

6:00 6:30 7:00 7:30 8:00 8:30 9:00 9:30

6:00 6:30 7:00 7:30 8:00 8:30 9:00 9:30

6:00 6:30 7:00 7:30 8:00 8:30 9:00 9:30

6:00 6:30 7:00 7:30 8:00 8:30 9:00 9:30

6:00 6:30 7:00 7:30 8:00 8:30 9:00 9:30

6:00 6:30 7:00 7:30 8:00 8:30 9:00 9:30

6:00 6:30 7:00 7:30 8:00 8:30 9:00 9:30

6:00 6:30 7:00 7:30 8:00 8:30 9:00 9:30

6:00 6:30 7:00 7:30 8:00 8:30 9:00 9:30

6:00 6:30 7:00 7:30 8:00 8:30 9:00 9:30

6:00 6:30 7:00 7:30 8:00 8:30 9:00 9:30

6:00 6:30 7:00 7:30 8:00 8:30 9:00 9:30

6:00 6:30 7:00 7:30 8:00 8:30 9:00 9:30

6:00 6:30 7:00 7:30 8:00 8:30 9:00 9:30

6:00 6:30 7:00 7:30 8:00 8:30 9:00 9:30