

STOCK QUOTATIONS

MORNING STOCK LETTER

(Received over Pitfield and Co's Private Wire)

NEW YORK, April 6—The London market this morning is firm, especially oil stocks. The Treasury will probably have to make new borrowings before July 1st. Although there is no definite plan to cancel the program on gold sterilization, the way has been left open to make such a cancellation. Chrysler-Lewis conference will resume at 10 o'clock this morning. Latest advices are that a settlement should be reached within 48 hours. Dividend meetings for today are Cerro de Pasco, Home-Strike Mining and possibly Union Oil of California. We would expect an irregular market today with probably some volume but with higher prices for the oils, rayons, paper and amusement stocks.

TORONTO, April 6—Smelter Gold—On advice of Dr. J. F. Wright geologist, work on the property of Smelter Gold Mines was discontinued after some 3,000 feet of diamond drilling had failed to indicate commercial ore.

Stanley gold contracts has been signed for 5,000 feet of diamond drilling on Stanley Gold property at Wawa, Michipicoten district. It will be done from the 550 level and other points to explore a wide mineralized zone lying south of the present shaft.

Perron—Bullion production in the first two weeks of March was valued at \$42,883 from the treatment of 5,131 tons, an average of 342 tons lately.

Albany River—Diamond drill hole No. 59 is well advanced at property and at depth of 400 feet intersected the extension of the ore bearing formation. Assay results from this hole will be delayed due to illness of the assayer. Underground development is proceeding according to schedule on three headings on the first and third levels.

Arrowhead gold—D. J. Russell, mine manager, reports deepening of the shaft to 500 feet has started with future lateral work planned on that horizon.

TORONTO, April 6—Wood Cadillac—Results of two more diamond

drill holes have been released by Wood Cadillac gold mines. Hole no 9 gave intersection of \$25.55 across 24 inches. Hole no 14 gave values of \$10.85 to \$43.75 across width of 23 inches to 3 feet.

NEW YORK, April 6—The February earnings smelters were at rate of \$9.05 a share annually.

MONTREAL, April 6—Canadian and Dominion Sugar Co Ltd.—Net profit for year to January 31st, 1937 equal to \$3.29 per share of capital stock as compared to \$3.47 and \$4.37 for two previous years. Working capital at \$13,200,000 down slightly from \$13,700,000. Canadian Maltting profits for 17 months ended Dec. 31 equivalent to \$5.01 per share compared to \$2.86 net working capital satisfactorily maintained at over \$3,000,000. Larger profits due to export business and company paid extra dividend Dec. 15 of fifty cents besides regular \$1.50 yearly.

Melchers Distilleries earnings 1936 before depreciation and income tax at \$88,199 down slightly from \$93,853 in 1935. On new capitalization 125,000 shares \$10 preferred and 62,000 shares no par value common profits equal to 70.5 cents and 21.1 cents respectively. During year share capital reduced by \$2,877,048 property account written down by \$10,000 to \$916,211 and good will \$1,555,200 reduced to \$1.00. Working capital at \$655,677 down from \$1,020,482 as current liabilities includes \$350,000 to be paid old class shareholders under new arrangement. New definitive certificates for preferred and common A and B shares now ready.

Hydro Electric securities Corp. dividend 20 cents a share declared on N. P. V. common, payable May 10 record date April 20. This first disbursement since March 31, 1932.

Canadian Car and Foundry—It is estimated company will net about \$3,000,000, less tax, from the German Government agreed payment of \$22,474,736 upon United States war salvage claims. Paymaster—March output at 105,695 up 10.2 per cent over February and 52 per cent over March 1936.

Montreal Stock Exchange

(Supplied by Pitfield & Co. members of Montreal Stock Exchange and Curb Market)

Table with columns: Stocks, Open, Close. Lists various stocks like Bell Tel, Canadian, Dominion Sugar, etc.

New York Stock Exchange

(Supplied by Pitfield & Co. members of Montreal Stock Exchange and Curb Market)

Table with columns: Stocks, Open, Close. Lists various stocks like Al Chem, Am Can, Am For Fr, etc.

YESTERDAY'S LOCAL MARKET QUOTATIONS

Table with columns: RETAIL MARKET, Stocks, Close. Lists items like Celery bunch, Carrots, etc.

MINING

(C.P. by Guardian's Special Wire) TORONTO, April 6—Starting the day bright and cheery, the Toronto market soured a bit in the afternoon and closed with losses showing for all groups.

BANKS

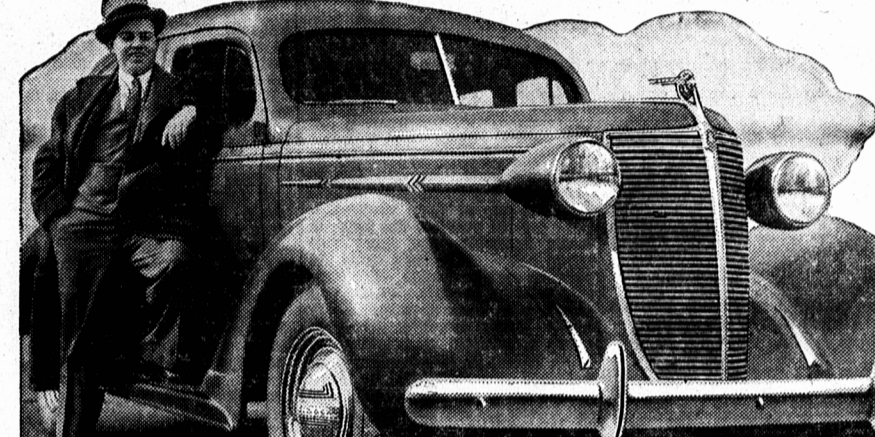
Table with columns: Banks, Open, Close. Lists banks like Canada, Commercial, etc.

UNLISTED

Table with columns: Stocks, Open, Close. Lists unlisted stocks like Albany, Altona, etc.

IT'S SWELL TO BE OUT OF THE 'ALL THREE' CLASS

I'M STEPPING OUT IN A BIG BEAUTIFUL NASH—AND IT COST ME ONLY A FEW DOLLARS MORE* THAN ONE OF THOSE SMALLER CARS!



FOR AS LITTLE AS \$3 OR \$4 A MONTH EXTRA YOU CAN GET OUT OF THE 'ALL THREE' CLASS. The Nash LaFayette... In many places, the SLIGHT difference in price amounts to just \$3 or \$4 a month extra on your time payments.

NASH MOTOR SALES CO. F. J. E. WRIGHT. ARTHUR SULLIVAN. Charlotte town, Summerside, P. E. I., Vernon, P. E. I.

MARKET BULLETIN

(Received over Woods-Read and Company Special Wire)

BANON AFTERNOON LETTER

The morning's dip in New York was accompanied by a distinct drop in offerings. Continue to buy on minor reactions. Strikes and President Roosevelt's recent criticism of the price level in some commodities have generated a lot of bearish talk in Board Rooms. The markets refusal, however, to make any headway on the downside despite unfavorable news may be regarded as encouraging market action.

NOON COMMENT

The market continues under the restraining influence of unsettled labor conditions and the gradual realization that the treasury will require additional financing to off set its underestimate of income tax receipts.

MORNING MARKET LETTER

The market began with a good opening yesterday with respect to both prices and volume but sagged lower as the day progressed, with volume shrinking to an extremely small turnover in the afternoon.

for SPRAINS

Advertisement for Minard's Liniment, 'King of Pain', for sprains and other ailments.

MINING

(Supplied by Woods-Read & Co.)

Table with columns: Stocks, Close. Lists mining stocks like Aldermac, Agrop, etc.

Montreal Curb

(Supplied by Pitfield & Co. members of Montreal Stock Exchange and Curb Market)

Table with columns: Stocks, Open, Close. Lists stocks like Abitibi, Asbestos, etc.

Livestock

MONTREAL, April 6—Continued decline on calf section saw prices drop 25 to 50 cents in early trading on Montreal livestock markets today while no early sales were made on cattle. Hog division displayed a weaker undertone but held steady as did sheep and lamb section.

MARKETS AT A GLANCE

Table with columns: (By The Canadian Press), Toronto and Montreal - Stocks, New York - Stocks, Winnipeg - Wheat, etc.

Produce Prices

MONTREAL, April 6—(CP)—Butter prices advanced to the year's highest level on Montreal open produce markets today while potatoes sold off and eggs held firm.

New York Curb

(Supplied by Woods-Read and Co.)

Table with columns: Stocks, Open, Close. Lists stocks like Amer Cran B, Am Sup Pow, etc.

TENDERS

Tenders will be received up until noon April 19th by the undersigned for painting of St. Mark's Episcopal Church at Kensington, both inside and out.

FOR SALE

Desirable Cottage (built in 1936) and Double Tenement, both just outside City limits, on extension of Upper Prince Street and Young Street. Apply: Lilia Garnham at adjoining Residence or M. A. FARMER, Solicitor, Bank of Canada Bldg. L-1242-4-7-9-12.

Banks

(Supplied by Pitfield & Co. members of Montreal Stock Exchange and Curb Market)

Table with columns: Banks, Open, Close. Lists banks like Bk Can, Bk Mtl, etc.

Advertising Rates—Payable in Advance

Central Guardian local, 4c per word; Western and Eastern local, 5c per word; Announcements and Coming Events 2c per word; Classified per word; In Memoriam Notices, 70c per inch; Lists of Floral and Spiritual Offerings, Cards, etc., 40c per name; Letters of Condolence 70c per inch; Notices of Thanks and Appreciation, 70c per inch or 4c per word. Other rates on application. Minimum Charge for any advertisement twenty-five cents.

Miscellaneous

INSURE IN THE SUN LIFE. Assets \$771,000,000. These are great—over the combined assets of the four next largest Canadian Insurance Companies. Agents wanted. Consult J. A. Moore, Currie Bldg., Charlottetown.

For Sale

1932 CHRYSLER CAR FOR SALE. Apply Guardian. L-1220-4-7-31.

Male Help Wanted

WANTED—MAN FOR FARM work. Apply C. P. Yeo, Union Road. L-1165-4-5-31.

New York Curb

(Supplied by Woods-Read and Co.)

Table with columns: Stocks, Open, Close. Lists stocks like Amer Cran B, Am Sup Pow, etc.

EYESIGHT EXAMINATION

Fitting and Supplying Glasses Etc. H. J. MABON OPTOMETRIST MONTAGUE, P. E. I. Office Connected With Drugstore.

To Let

FOR RENT—A SMALL APARTMENT with sun porch, furnished, or unfurnished. Apply Mrs. Hooper Home, 130 Elm Avenue. L-1181-4-5-31.

Female Help Wanted

WANTED—EXPERIENCED MAID. Apply Guardian. L-1241-4-7-31.

Lost

LOST—TIRE AND RIM. FINDER phone 702. Reward. L-1174-4-5-31.

Wanted

STUDENT WANTS BOARD. Phone 55-J. at noon. L-1240-4-7-11.

Salesman Wanted

SALESMEN!—WE CAN HELP you make more money. 200 Guaranteed Products. Lowest prices. Best Prospects. Every home a prospect. Permanent and Profitable work. Nothing to Lose. Lot to Gain. \$25. Buy first assortment Reserved territory. Write today! Box 424 (F) Station M Montreal. N-7-21.