

The Car Owner's Scrap Book

By G. W. Donald

Removing A Nut from A Cylinder

While cleaning a spark plug, the nut accidentally dropped into the cylinder, by means of a small mirror, the nut could be seen lying on the piston close to the cylinder, the pliers could not be inserted far enough into the cylinder to reach the nut and long tweezers or tongs were not at hand. With a bent twig, found on the road, and a piece of chewing gum, the nut was easily removed.

Engine Hiss

If a hissing noise other than that produced at the carburetor inlet is heard about an engine, it indicates that there is a leak somewhere. It may be at the inlet or exhaust manifold, at the manifold to the exhaust pipe connection, at the manifold to the inlet connection, at the spark at the priming cups. These hisses will all be audible to the driver when the engine is running. If there is a hissing noise when the engine is turned slowly by hand, the piston rings or valves may leak, or the cylinder head gasket may be defective.

The Air Cooled Engine

Though air does not absorb heat as rapidly as water, the air cooled engine is kept at operating temperature because it has a larger heat radiating surface than a water-cooled engine. The numerous fins which encircle each individual cylinder provide a larger surface from which the air can withdraw the heat. In order to provide efficient radiation, these fins should be kept clean and free of oil, as it acts as a heat insulator.

In Case of Fan Belt Failure

Should the fan belt break at a time and place when another cannot be procured, there will be little danger in running the engine if the car speed can be kept up to about 25 miles an hour, as the air which is forced through the radiator by the motion of the car will be sufficient to keep the temperature of the cooling water within the running range for a considerable length of time.

Removing Hub Cap

Sometimes the hub cap wrench is misplaced and the monkey wrench is too small. But if a C clamp is available, tighten it on the hub cap and the problem is solved. In the absence of a clamp, a rope or belt, drawn tightly around the hub, may answer the purpose.

Road Repair At Night

The night is dark, the road is dark, the light has been forgotten, and a repair must be made. A more annoying situation could hardly be imagined. Yet, there is a way out. Scrape up enough sand from the roadbed to form a cone a few inches high. Draw some gasoline from the tank, pour it over the cone and ignite it. The light will not be very strong, but it will prove a great help.

Proper Brake Application

The greatest braking power will be

secured when the brakes are applied as close as possible to the point of locking the wheels without actually locking them. When the rear wheels slide, the only braking power secured is that caused by the sliding friction of the tires on the roadbed, which is considerably less than that secured by the friction between the brake linings and the brake drums.

When filling the radiator it sometimes happens that air pockets form in the passages. This prevents proper circulation of the water, so that rapid overheating will result. To avoid this, when filling the radiator, open the petcock on the water pump on forced circulation systems, or the drain cock or thermo-siphon systems. Close them only when water starts to run out, which indicates that the air has been forced out first.

Pre-Ignition

Pre-ignition is the action of the fuel charge exploding before the proper time with the result that extra resistance is added to the upward movement of the pistons. The cause usually is heavily carbonized combustion chambers, some of the carbon taking pointed shapes which become incandescent and ignite the fuel prematurely.

Cord and Fabric Tires

As a cord tire is somewhat more resilient than a fabric tire, it is inadvisable to use one of each on the rear wheels. Though the effect may be unnoticed by the driver, the difference in resiliency has the same effect as wheels of different diameters, so that there is more work for the differential gears to do, resulting in more rapid wear.

Driving Through Sand

When it becomes necessary to drive through heavy sand, better progress will be made if the tires are deflated to about one half the rated pressure. The reduction in air pressure gives a broader road contact and affords better traction. Re-inflate the tires as soon as the hard roadway is again encountered.

Storage Battery Size

The voltage of a battery is determined by the number of cells, and not by their size. Each cell will average about two volts, regardless of its size. Larger cells and larger plates will increase the capacity of the battery but has no effect on the voltage.

Battery Paint

Battery cases are painted with asphaltum paint which is acid resisting. An occasional coat of this paint, which can be purchased at the hardware store, will preserve the base and prevent damage to the jars.

TO SYPHON GASOLINE

To draw gasoline from the tank which is not equipped with a petcock, siphon is the quickest and easiest method. But unless one relishes the taste of gasoline, drawing on the end of a tube with the mouth is not a satisfactory method. A "tasteless" method of starting the flow of gas is as follows: Use a piece of rubber hose that is fairly stiff, so that it does not bend too easily. Insert it straight down into the tank, closing the opposite end with the thumb. Then raise the hose quickly, remove the thumb, and quickly push the hose into the tank again, immediately closing again the tube with the thumb. Repeating this process several times will gradually cause the level of the gas in the tube to rise. When the gas starts to flow from the end of the tube, quickly drop the end into a receptacle and the gasoline will continue to flow.

TESTING HIGH TENSION WIRES

To determine if the high tension wires leading to the spark plugs are porous, resulting in a leakage of the current, disconnect one wire at a time from the spark plug, and hold the suspected part against some metal part of the car while the engine is running. If there is a leak, the spark will jump to the metal part.

TIGHTENING BATTERY TERMINALS

The terminals of a battery will corrode if they are not kept tight and well greased. When this occurs, it is customary to scrape the terminal and post in order to again secure a good contact. After this has been done several times, the battery post is reduced in size so that the terminal does not clamp as tightly as it should. Though the terminal may appear to have a tight hold, the vibration when the car is running may cause it to jar loose and slip of the post. If a piece of sheet lead or tin foil is available, it may be wrapped around the post to increase its size. If lead or tin foil cannot be secured, a temporary repair may be made by driving a nail or piece of heavy wire between the post and the terminal. As this method

does not permit the terminal to clamp around the entire circumference of the post, it should be corrected as soon as possible. If the car can be spared for a short time, the battery repair-man can build up a new post in a short time; which will assure good contact all around the post.

TAKING THE SLIP OUT OF THE OIL CAN

When using the ordinary type of oil can, the outside surface of the oil can offers a very insecure hold when the hands are greasy. Should the can slip from the user's hand, the spout is sometimes damaged so that it will leak when used thereafter. To prevent this, two metal clips can easily be soldered to the sides of the can, near the filler opening. These clips are bent in the form of half circles, with the open side away from the bottom of the can, so that two fingers of the hand can be lopped through them.

SOME HINTS ON HOME REPAIRS

As soon as any part has been removed, it should be cleaned with

kerosene or gasoline before anything else is done. This not only makes the work less disagreeable, but also enables the worker to detect any loose parts, which, when covered with dirt and grease appear to be tight. Frequently a wrench will not fit a bolt or nut because it is coated with grit, and screwdriver slots cannot be seen for the same reason. It also makes it easier to discover breaks or abrasions in the wiring, and last but not least, it prevents the grit from working into the threads of the screws. Before dismantling parts which are exposed to the elements, such as brake rod clevis pins, it is a good plan to give each part a generous application of rust remover. It is surprising what a lot of time can be saved by this simple precaution.

A TIRE HINT

Many cases of tire trouble are due to the fact that the tube has not been properly inserted. Before a tube is placed in the casing, the bridge nut above the metal plate at the base of the stem should be tightened. Many a mysterious leak is caused by the looseness of this

nut, and, should the tire run low in pressure, the valve stem may be torn from the tube. When the tube has been placed in the casing, jar the tire a few times to seat it firmly. After the tire has been mounted and inflated, the jam nut which secures the tube should be placed in position and securely tightened. Very little time is consumed in this procedure and considerable delay and inconvenience will be avoided.

TRANSMISSION HUM

If there is a hum in the transmission, the clutch may be out of line with the transmission, causing a weaving action which becomes more pronounced when driving up hill or under heavy load. A hum may also be caused by insufficient lubrication, though in this case it is more regular in its action and sound, producing a hum of more constant pitch.

USE FOR BROKEN WRENCHES.

Double end wrenches which are broken on one end should not be discarded. By grinding them round and slightly tapering on one end, they will be found useful for aligning parts such as brake rods, so that the bolt or pins can be inserted readily.

In accordance with France's desire to centralize the industry, two of the largest French manufacturers of airplanes and seaplanes have joined the Societe Generale Aeromautique.

John Faulkner, famous as a Jockey 70 years ago, who has been twice married and who has 32 children, celebrated his 102nd birthday at Appleford, England, recently.

D. Farr Davies, of Cross Hands, Wales, who started as a pit-boy in a coal mine, has just been elected president of the Monmouthshire and South Wales Coal Owners' Association.

Because they were not getting satisfactory prices for dogskins, dog owners in the interior of China refused to sell, and this has caused a shortage of the "fur" in Chinese cities.

The Mexican Government is considering a plan for the purchase of 200 tractors to be used in connection with the cultivation of irrigated lands at the Calles and Don Marting reclamation projects.

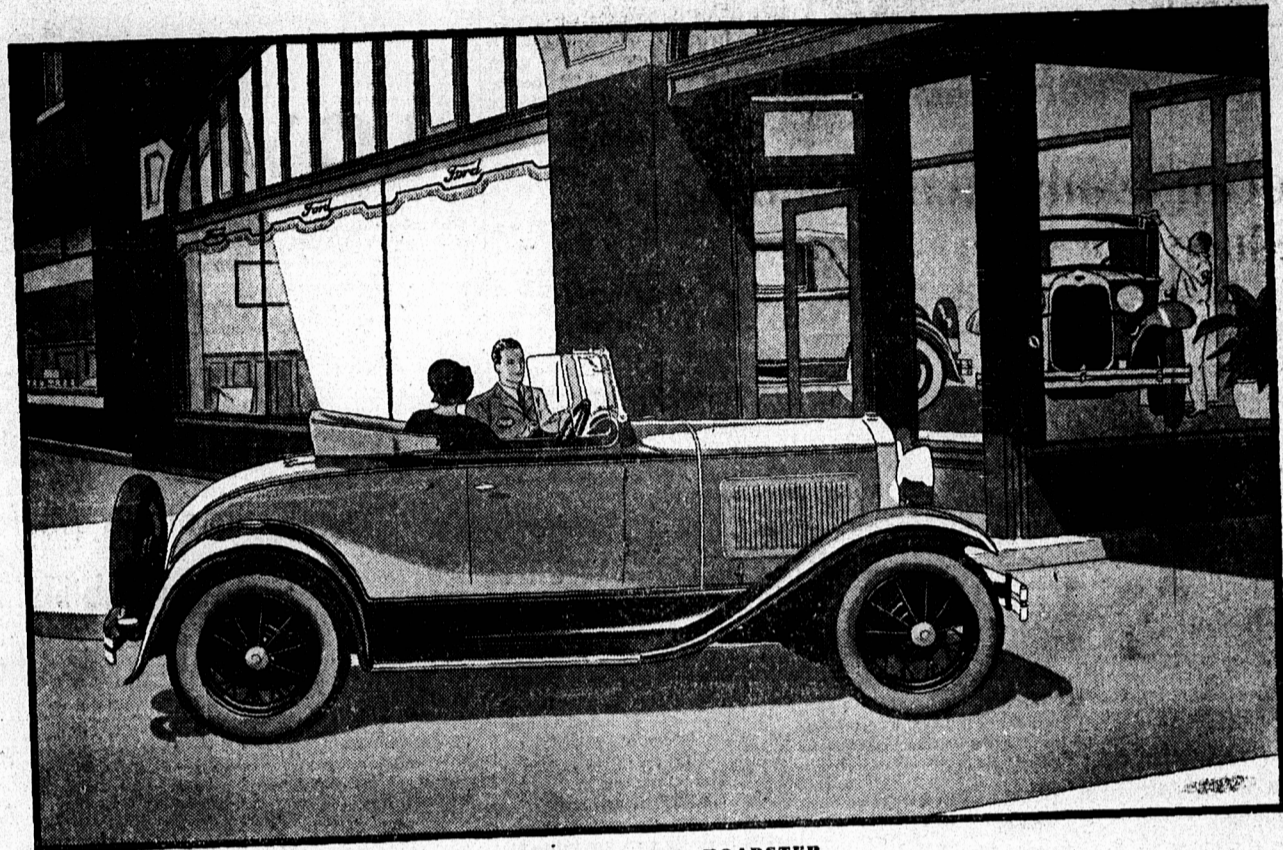


ALL THE KITCHEN UTENSILS

As well as other items in our hardware line are of fine quality and made to withstand more than the normal abuse. We have all the things you need, from nails to saws, from hammers to curtain rods. Think of us when you think of hardware.

The Rogers Hardware Co., Limited

To Help You Get THOUSANDS OF MILES OF CARE-FREE, ECONOMICAL MOTORING



THE NEW FORD ROADSTER

THE assurance of good dealer service, at all times, is as much a feature of the Ford car as its beauty of line and color, safety, comfort, reliability, economy and ease of control.

In addition to the main factory at East Windsor, Ontario, assembly branches are located at Montreal, Toronto, Winnipeg and Vancouver, with sales and service branches at London, Saint John, Regina and Calgary. More than 700 Authorized Ford Dealers have been established throughout Canada to serve your needs and to see that genuine Ford parts are quickly available when needed and at a low price. This is by far the largest automobile-dealer organization in Canada and it is of great value to every Ford owner. "What kind of service will I get after I buy a car?" is always an important point to consider in the purchase of an automobile.

When you receive your Ford, the dealer will explain the simple little things that should be attended to periodically to insure the best performance. He will also tell you about the Free Inspection Service to which every purchaser of the Ford is entitled at 500, 1000 and 1500 miles.

This inspection includes a check-up of the battery, generator, charging rate, distributor, carburetor adjustment, lights, brakes, shock absorbers, tire inflation and steering gear. The engine oil is also changed and the chassis lubricated through the high-pressure grease gun system.

No charge whatever is made for labor or materials incidental to this service except where repairs are necessary because of accident, neglect or misuse. The labor of changing the engine oil and lubricating the chassis is also free, although a charge is made for new oil. This inspection is free for the first 1500 miles only, and is made thereafter at an equitable charge.

Every time you take your Ford to the dealer for oiling and greasing, it will be a good plan to have him check over important points that have a bearing on continuously good performance and tell you exactly what the car needs. You will find him prompt and business-like, fair in his established flat rate charges for labor, and sincerely eager to do a good job at all times, so that you will get thousands of miles of enjoyable, economical motoring.

- Roadster . . . \$540 Phaeton . . . \$550 Tudor Sedan . . . \$620 Coupe . . . \$620 Sport Coupe . . . \$655
- De Luxe Coupe . . \$670 Three-window Fordor Sedan . . \$775 Convertible Cabriolet . . \$790 Town Sedan . . . \$835

All prices f. o. b. East Windsor, Ontario. Bumpers, spare tire and taxes extra. Easy time payments can be arranged through your Ford dealer.

FORD MOTOR COMPANY OF CANADA, LIMITED

EFFICIENT OPTICAL SERVICE

NEW EXAMINED, GLASSES SUPPLIED AND FITTED. CAREFUL ATTENTION GIVEN TO REPAIR WORK. J. W. JOHNSTON Registered Optometrist 157 Kent Street, Charlottetown Phone 752-L

PLUMBING AND HEATING

If you want Expeditions and Expert Workmanship Send to

Fred H. Trainor 80 Grafton Street Opposite Prince Edward Theatre Phone 393-J



USE RAMSAY'S PAINT

A little "good" paint works wonders—it transforms ugliness into beauty and provides the finest and cheapest insurance to the surface against decay.

Ramsay's Paint has been used for preserving and beautifying Canadian property for nearly one hundred years and during this time has won an enviable reputation for itself.



For Sale by Stanley, Shaw & Peardon