

### WOLFVILLE NURSERIES

G. M. PECK & SON.  
Wolfville, N. S.

Growers Dealers in Fruit Trees, Small Fruits and Ornamentals.

### APPLE ROOT GRAFTS

A specialty. All leading varieties and true to name. Prices unequalled. Write for terms. "This is to say that I have bought of G. M. Peck & Son, 1000 Root Grafts each year the last two years and they are mostly all alive and made a large growth so consider them very reliable stock."

(Signed) J. L. GERTRIDGE.  
3 12 lbs & w ow

### Guaiacol

A strange looking name, but a mighty good thing. It has the property of killing Consumption germs. It is an ingredient of PARK'S PERFECT EMULSION, which is one reason of this Emulsion's exceptional value.

### Fel's Naptha Soap.

This is a soap which is very highly recommended.

Will wash everything washable, clean everything cleanable, and hurt nothing.

70 per cake.  
for 25c.

### Jenkins & Son

### SILVERWARE That Wears

We have in stock a large line of 1847 Rogers and other makes of Knives, Forks and Spoons, which we are now offering at a liberal discount.

### G. H. TAYLOR,

Jeweler and Optician,  
Sunnyside Queen Square.

### FOR SALE!

We offer for sale property known as "Esdale Foundry."

This property was formerly owned and occupied by Mr. T. A. McLean. Good title guaranteed.

Any information regarding same can be had by calling at our office.

### Bruce Stewart & Co.,

Founders, Engineers, Machinists and Boiler-makers, Steam Navigation Co's Wharf, Charlottetown, P. E. Island.

### Eastern Steamship Co.,

### International Division

Reduced Rates in Effect Until May 1st, 1904.

St. John to Portland \$3.00  
St. John to Boston \$5.00  
Commencing March 30th 1904, steamer leaves St. John Wednesdays at 8 a. m. (Atlantic Standard) for Lubec, Eastport, Portland and Boston Saturdays at 6.30 P. M. for Boston direct.

RETURNING  
From Boston, via Eastport and Lubec, Mondays and Fridays at 9.00 a. m.  
From Portland, Mondays at 5.30 p. m.

Passengers arriving at St. John on evening previous to morning sailing can go direct to steamer and take cabin berth or stateroom for the trip.

Wm. G. LEE, Agent, St. John, N. B.  
A. H. HANSCOM, G. P. & T. A.  
CALVIN AUSTIN, V. P. & Gen'l Manager  
General Offices, Foster's Wharf, Boston, Mass. U.S.

**MENEERY BELL COMPANY**  
22, 24 & 26 RIVER ST. 177 BROADWAY  
TROY, N.Y. NEW YORK  
Manufacture Superior CHURCH, SCHOOL & OTHER BELLS.

### THOUSANDS OF CANADIAN WOMEN USE

### DIAMOND DYES

AT THIS SEASON OF THE YEAR.



Diamond Dyes are a saving and convenience for all homes. They color dresses, skirts, suits, jackets, blouses, ribbons and feathers rich and durable colors. Diamond Dyes produce all the new and fashionable colors.



Without Question the Best Clothes

are to be bought at Boyce's.

Every fit guaranteed. Every suit warranted. A select stock for your inspection. Best workmen employed.

F. R. BOYCE,  
Great George St.  
Charlottetown.

### Tenders for Coal

Charlottetown, Summerside and Georgetown, also Hospital for Insane, Falconwood and Ferry Steamers.

DEPARTMENT OF PUBLIC WORKS, Charlottetown, March 21st, 1904.

Sealed Tenders will be received at this office until noon on

Wednesday, April 6th 1904,

from any person or persons willing to contract to supply the Provincial Building, Court House, Prince of Wales College, Poor House, Queen's County Jail, Summerside Court House and Jail, Georgetown Court House and Jail, Falconwood Asylum, and Ferry Steamers with coal at per ton of 2240 lbs., and to be delivered in the vaults of the above mentioned buildings, at the cost of the contractors, by the 1st Sept. next. Weight Scales to be approved by the Department.

Full particulars as to quantity and kind for each building can be had at this office.

The names of two responsible persons willing to become bound for the faithful performance of the contract must accompany each tender.

The Department does not bind itself to accept the lowest or any tender.

Tenders to be addressed to the undersigned and marked "Tender for Coal."

L. B. McMILLAN,  
Sec'y Public Works.

### IF YOU ONLY KNEW

When your well stocked store was going to burn down, you could wait to insure until the week before, but

### When It Is Destroyed

You are too late. Remember the old adage, "There is no time like the present," and no insurance like ours.

**E. H. BEER**  
Representing Phoenix of Hartford, Canadian Quebec.

### WANTED

1505 Dozen Eggs

Cases returned promptly. Also buyer of poultry, dressed pork, calfskins and hides.

### John Hopkins

St. John, N. B.  
Established 1867.

### DRESSMAKING HINTS.

Very Full Skirts the Rule Now—The Vogue of Ruchings.

The smart tailor made skirt for street wear just clears the ground all around and tilts up a trifle at the back. These skirts are very full at the feet, but when well made they hang beautifully and are easy to walk in.

Spotted taffeta makes pretty afternoon and evening gowns. Oriental satin is particularly smart in deep cream color combined with a trifle whiter shade of chiffon and pearl ornaments. Many skirts now hang in full gathers from the waistband and are simply



ERMINE TURBAN.

trimmed at the bottom with five bands of ribbon, with insertions of lace between.

Pinked ruches of taffeta bring us back also to the 1830 styles.

Enormous quantities of material are needed for the new models, and the redingote and pelisse of old are being revived.

The loose, graceful flowing sleeve is a feature of nearly every up to date evening gown.

Corduroys in black, brown, white and deep shades of gray will all be very smart for walking costumes.

Moleskin plush is used for hats to go with the fur.

The kilted walking skirts are only held down for a short distance, after which they are allowed to flare.

The cut shows a smart ermine turban trimmed with a jet buckle and a black alget.

### WHAT IS WORN.

Cross Over Capes—New Marie Antoinette Waistbands.

Pale lavender is one of the most popular shades for evening wear, and royal blue is also often seen.

The new cross over peleries are becoming to slender figures, but should be avoided by those with any tendency to plumpness.

Almost anything is smart in the way of trimming from suede kid bands to



MUFF AND CAPE OF SILVER FOX.

ribbon ruching. The latter is now being revived after several years of plain effects.

The Marie Antoinette waistbands are greatly in demand and when properly boned and trimmed with tiny bows and buckles they form the greater part of the trimming of a blouse bodice.

Rosettes and cockades figure on the new belts, as they do on the new millinery.

A blue cheviot walking costume seen recently had a wide cape made with a trimming of knotted fringe. The coat had a little vest of orange panne embroidered in black and a deep blue kid belt having a gold buckle.

Bands, or, rather, corslets, effects are seen on many short and jaunty fur coats.

Spangles are quite the thing for evening wear. When combined with hand painted chiffon they give quite a dainty effect.

Pannes are also used, as well as satins in all kinds of new makes, described by the manufacturers as "with soft finish"—that is to say, duchess satins of old are now made so supple that you can, as the saying goes, "pull them through a ring." These lend themselves admirably to the pings, tuckings and platings which the fashion of the hour demands.

The picture shows a smart cape and muff of silver fox. The hat is of velvet, lined with tacked chiffon and trimmed with a bird.

JUDIC CHOLLET.

Head Office  
Halifax, N. S., Canada.

Branch,  
Annapolis N. S.

Cable Address, "Handfield."

A. B. C. Code 5th Edition

Mr. J. A. Johnson, Halifax, N. S.

DEAR SIR—I herewith acknowledge receipt of check on the Bank of Montreal for \$4,556.00 being balance of Policy No. 21,569 in the Mutual Life Insurance Company of New York, dated February 15th, 1899 on the life of the late Mr. Thomas S. Whitman of Annapolis Royal. This makes the total amount received as death claim \$10,535. The original face value being more than doubled although some of the dividends were used.

Thanking you for the prompt settlement, I remain

Yours sincerely,  
A. N. FRASER,  
Special Agent, Ch'town.

Owners for Nova Scotia & U.

of WHITMAN'S PATENT

COLLIER WHITMAN & CO.,  
FISH EXPORTERS and DRYING FISH

and GENERAL COMMISSION MERCHANTS.

Halifax, N. S., March 2, 1904.

Yours sincerely,  
A. HANDFIELD WHITMAN,  
Local Agent, Ch'town.

## Our New Spring Hats English and American

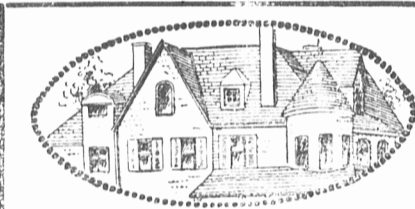
are now on exhibition. The 'Wilkinson' and 'Henry Carter' Hats have no superior. We have been agents for these hats for 7 years and we are yet to hear from the first customer who is dissatisfied with their wearing qualities.

They are correct in style, and the values are equal to, if not better than that offered by any Hatter on P. E. I.

Our stock is the second largest in the city, you cannot fail to get the hat to suit you if you buy it at

## D. A. BRUCE,

The Stylish Hatter,  
MORRIS BLOCK,  
CHARLOTTETOWN.



Paint is to a Building

what clothing is to the body. It is just as important. You should take as much care in selecting the paint to clothe your property, as you do in selecting the material to clothe your person. Paint preserves the building. Paint gives beauty to the building. In painting the labor costs more than the paint. There will be a large waste if the right paint is not used.

THE  
SHERWIN-WILLIAMS  
PAINT

is made for painting buildings. It is not a low-priced paint, but it is cheap because the best. It is made of the purest materials—that wear the longest. The colors are bright and handsome.

SOLD BY

SIMON W. CRABBE, - Stoves and Hardware,  
Walker's Corner.

## "The SUN LIFE" AGAIN LEADS

For new business secured and paid for in 1903 the "SUN LIFE" leads all other Canadian Companies in writing the magnificent total of 14,217,203.00.

For plans in this "Prosperous and Progressive" Co. apply to

E. H. BEER,

Special Agent,  
Charlottetown.

J. H. WELCH,

Manager for P. E. I.  
Charlottetown.

**THE SOVEREIGN LIFE ASSURANCE COMPANY**  
AUTHORIZED CAPITAL \$1,000,000.00  
ALL GOVERNMENT DEPOSIT OFFICE TORONTO.  
INCORPORATED BY SPECIAL ACT OF THE PARLIAMENT OF CANADA.  
ADDISON H. HOOVER, ESQ., President.  
HON. W. C. EDWARDS, 1ST VICE-PRESIDENT  
WILLIAM DINEEN, 2ND VICE-PRESIDENT  
THOMAS BAKER, 3RD VICE-PRESIDENT  
ROBERT E. MENZIE, TREASURER  
ALEX. DAVIDSON, M.D., MEDICAL REFEREE  
SIDNEY H. PIPE, ACTUARY  
PROVINCIAL DIRECTORS:  
HON. ARTHUR PETERS, CHARLOTTETOWN.  
JENAMIN C. PROWSE, CHARLOTTETOWN.  
GEORGE E. HUGHES, M.P.P., CHARLOTTETOWN.  
W. H. BRENNAN, SUMMERSIDE.  
A. W. STERNS, Provincial Manager  
Charlottetown

### PROFESSIONAL CARDS

**Dr. SMALLWOOD,**  
SURGEON DENTIST,  
DESBRISAYS BUILDING.  
Complete Equipment and up to date methods. Painless Extraction, Aluminum and Alumina lined plates. A Specialty made of crown, bridge and all gold work.  
All work fully guaranteed.

**DR. T. C. ROBINS,**  
DENTIST.  
Office at Residence, Prince St.  
Opposite St. Paul's Church.

**Dr. JAMES WARBURTON,**  
Physician and Surgeon,  
KENT ST., CHARLOTTETOWN.

X Ray and Electric Treatment.  
OFFICE HOURS—9.30 to 10 a. m., 2 to 5.30 and 7 to 8.30 p. m.  
10-21 dwtf

W. A. O. MORSON, K. C. C. GAVAN DUFFY  
**MORSON & DUFFY**  
Barristers and Attorneys,  
Brown's Block, Charlottetown, P. E. I.

**MONEY TO LOAN**  
Solicitors for Royal Bank of Canada.  
13 dwtf.

W. E. E. & W. E. BARRISTERS, SOLICITORS,  
1001 Kent St., Charlottetown. Bank of Nova Scotia Building, Charlottetown.  
Money to loan.  
See 8 d w 1 yr

**ARTHUR J. B. MELLISH, A. B.**  
(HARVARD.)  
BARRISTER AND ATTORNEY-AT-LAW  
Cor. Queen and Richmond Sts. Ch'town  
Telephone Connection.

**J. S. O'NEILL,**  
Barrister, Solicitor, &c.,  
MONEY TO LOAN.  
OFFICE—MORRIS BLOCK, Ch'town, P. E. I.  
8-21 dw tf.

**Paterson Downing Co's**  
Commission Merchants.  
St. John's, Newfoundland,  
Consignments of P. E. Island produce  
SOLICITED  
& w 1 yr

**JOHN F. OUTHIT**  
Commission Merchant  
Wholesale Tropical and Domestic Fruits and produce.  
Write for quotations on Oranges, Lemons and Bananas  
130-138 Barrington Street, Halifax, N. S.  
8 d w 1 yr

**GEO. S. INMAN,**  
Barrister, Solicitor, Notary, etc.  
Money to loan. Collections made.  
Office, Montague, P. E. I.

**CROSBIE & CO.**  
St. John's, Newfoundland.  
Importers and Commission Merchants.  
Provisions, Cattle and Produce.  
Wholesale and Retail.  
Waterside premises opposite F. Conner  
Saddler.  
Office address, Crossmore P. O. Box 462  
10-7 dwtf.

A. A. McLean, K. C., Donald McKinnon  
**McLEAN & McKINNON,**  
Barristers, Attorneys-at-law,  
Brown's Block, Charlottetown.  
11 1 yr.

SMALLWOOD, C. R. Barrister and Attorney at-law, Notary Public, etc. Office Cameron Block, lately occupied by P. I. Hassard, K. C. North Side Queen Square. Money to loan

**Mackinnon & Williams**  
Barristers, Solicitors, Notaries, etc.  
D. A. MACKINNON, LL. B., K. C.  
E. EAYFIELD WILLIAMS,  
Office—Cameron Block, Charlotte. ow  
Money to loan on Real Estate.  
July 17 mw w 1 yr

**Dr. HANDRAHAN**  
Physician and Surgeon.  
Special attention to the diseases of children.  
Office and Residence—Dorchester St. near City Hotel.  
OFFICE HOURS—1 to 3 p. m., and 7 to 8 p. m.  
12 25 mw, w 3 mo.

**ARTIFICIAL TEETH**  
The best of satisfaction at moderate prices. Extraction free of charge.  
**Dr. J. P. MURRAY,**  
Queen Street, Opp Frowse Bros.  
3 2 ed & w 1 yr

**McQuarrie & Arsenault**  
Barristers, Solicitors, [etc.]  
Summerside, P. E. I.

Offices—Royal Bank of Canada building.  
**NEIL McQUARRIE, K. C.**  
A. E. ARSENAULT  
14 and w