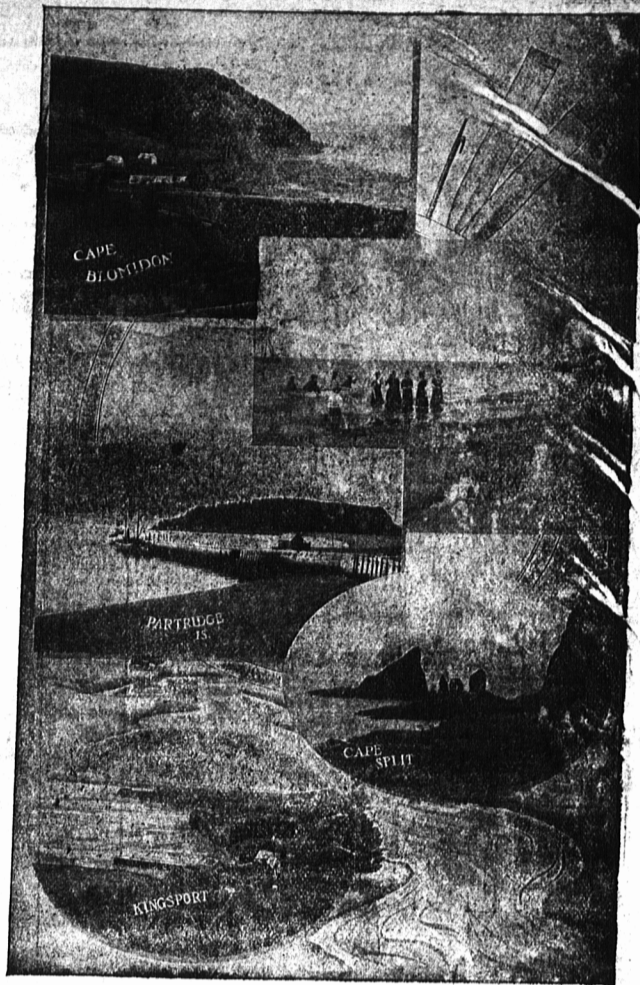
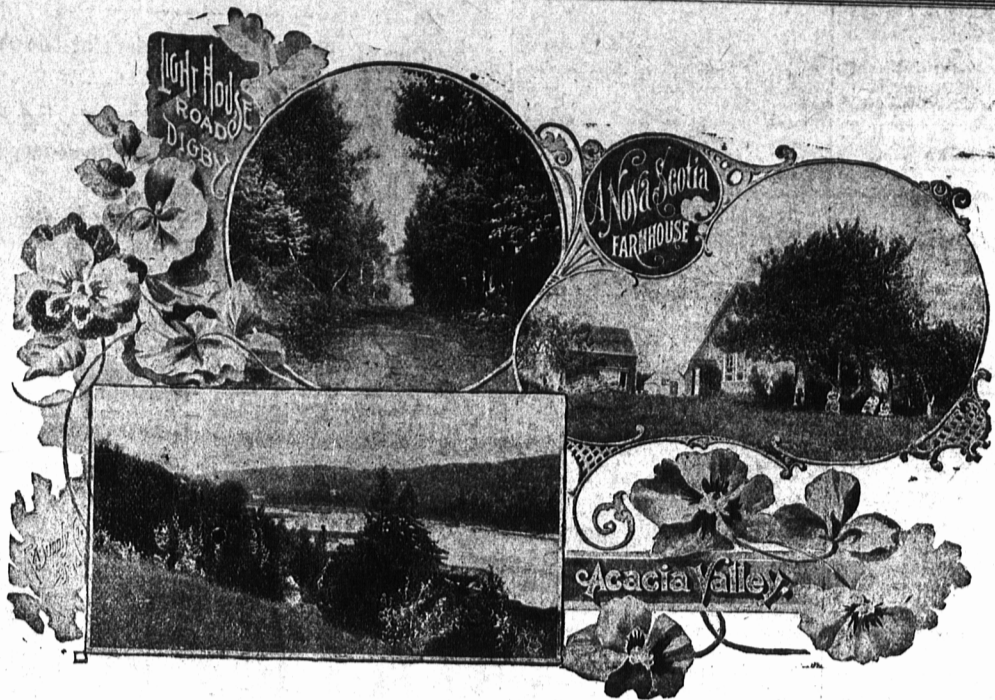


To Boston And New York==Some Interesting Scenes



size and kind, and have cost not less than One Million Dollars.

These superb vessels, while they can be steered independent of their rudder, are supplied with Harfield's steering gear, only found in battleships and cruisers. At night, to facilitate navigation, each will bring into operation a searchlight of such power as easily to sweep the horizon. Harfield's warship anchor gear is also fitted. The boat and other safety equipment is to United States and Imperial Board of Trade requirements. There are four decks, the main deck being of steel, and the fore-castle deck a steel turtleback, while the promenade deck, which will be the delight and admiration of passengers, is of thick teak. There are numerous watertight bulkheads, and safety, the first and absolute necessity, is insured by every device known to human skill. The propelling machinery comprises two independent sets of triple compound, inverted direct-acting, surface-condensing engines, with four cranks, each driving a separate screw. Each set of engines has four vertical cylinders. They are balanced according to the most perfect practice known, the Yarrow-Schlick principle.

The traveler who has an eye for expedition and comfort, the business man who has to make trips between New York, Boston, Halifax and St. John all the year

round, the freighter who looks to rates and despatch, the general public who like their tastes catered for and their pleasure assured—all these patronize the route which is best for the pocket, for convenience, for comfort—best on time, best in equipment, best in everything that goes to make journeying varied, interesting, and picturesque.

That about describes the Dominion Atlantic Railway's Route, which between Boston and Halifax saves 276 miles, between Boston and St. John 105 miles, and between Halifax and St. John 86 miles, the land service of which is made up of Pullman Pacific Buffet Parlor Cars and splendid saloon coaches—a Route, moreover, which is unrivaled in its steamship facilities, and is the natural highway of fast travel between Nova Scotia, New Brunswick and the States.

The Dominion Atlantic Railway supplies a remarkably fast service between the cities of Halifax, Boston and St. John by means of its famous Flying Bluenose Expresses. "The Flying Bluenose," the name and reputation of which has become household words throughout Canada and the States. Each of these trains is as cozy and luxurious a flyer as modern science can make it, and in the Pullman Pacific Buffet Cars the traveler will find everything that makes travelling by rail a pleasure. This is the link of land between Boston, Halifax and St. John.

with heavy steel rails, the road is kept like a garden with the smoothness of a billiard table, and the high speed of "The Flying Bluenose" Expresses is co-existent with the perfection of easy running that can only result from the utmost stability and solidity of a first-class permanent way. It challenges comparison with any one of the leading railroads of the continent.

The full Summer Schedule of the "D. A. R." commenced Sunday June 23rd. There will be three steamships engaged in the Boston-Yarmouth Service, S.S. Prince George, S.S. Boston, and S.S. Yarmouth, making eight round trips per week.

The direct New York-Yarmouth



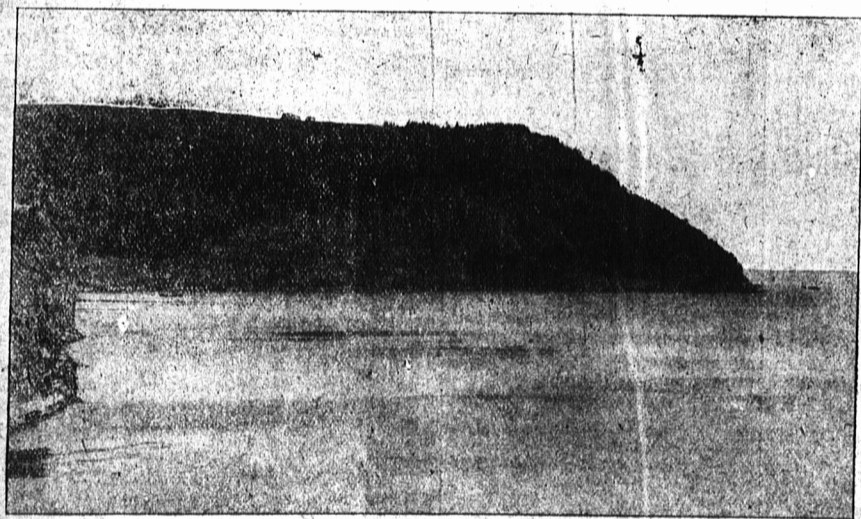
Yarmouth, Nova Scotia.

Service has already opened this season with the sailing from the Company's Pier at Foot of East 20th Street East River, New York, on Saturday 23rd, June at 2:00 p.m. thereafter making a round trip every five days. Beginning June 1st, the R. M. S. Prince Rupert will perform a daily service (Sunday excepted) between Digby N.S. and St. John N. B.

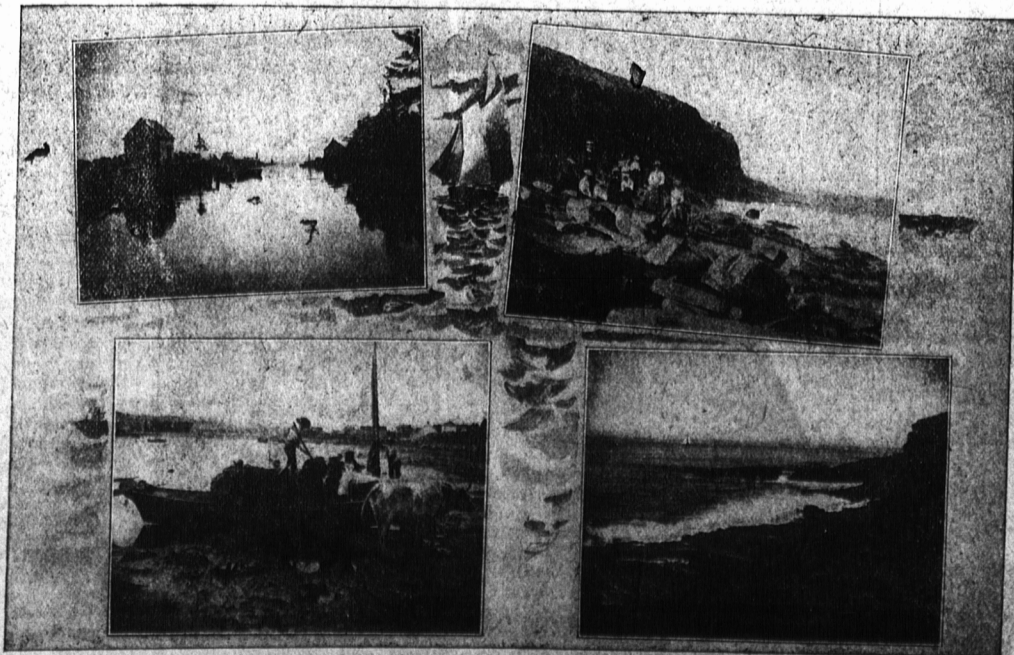
The S.S. Prince Albert of the Company's fleet is now performing a daily service between Parrsboro and Wolfville.

The Limited "Flying Bluenose" Expresses will go into commission on June 21st.

The Company has lately opened a city office at Truro in the Learnew hotel annex on the Esplanade. This is in charge of City agent A. C. Webster, who is prepared to quote rates and lend his friendly aid to all persons bound to points in the "land of Evangeline" throughout the State and all points South and West.



Scenes Along the D. A. R. Line.



Scenes Along the D. A. R. Line.



A Fascinating Land of Outdoor Joy.

