

After Every Meal
WRIGLEY'S
 Sealed Tight Kept Right



Still 5c

WRIGLEY'S has steadily kept to the pre-war price. And to the same high standard of quality.

No other goody lasts so long—costs so little or does so much for you.

Handy to carry—beneficial in effect—full of flavor—a source and comfort for young and old.

THE FLAVOR LASTS

B-22

Fertilizer at Cost

In order to clear out the balance of our Fertilizer we are now offering same at cost IN TON LOTS OR MORE, while our stock lasts, consisting of

- BASIC SLAG.
- MURIATE OF POTASH.
- SWIFTS' ANIMAL BRAND (Mixed)
- SWIFTS' POTATO FERTILIZER (Mixed)

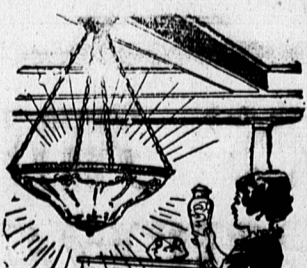
Send along your orders quickly as we have only a limited supply of the above on hand.

TERMS. Cash with order.

A. HORNE & CO

CLEAR AS A CRYSTAL

is the light shed by our hand some indirect lighting fixture. All the glare of direct light is avoided, but none of the illumination is lost, but rather increased. See them and you'll like them. And you'll like them more and more as you use them. Our light fixtures are exempt from Tax.



MARITIME ELECTRIC COMPANY LIMITED

Summerside and Western Guardian

—GOOD CANADIAN Print cotton, per yard 13c, or 10 yards for \$1.75. Sinclair & Stewart Limited.

—LADIES AND GENTLEMEN! BE SEATED!—Kill Kare Minstrels, Strand Theatre, Kensington, June 10th.

—COOL SERGE SUITING, 56 inches wide, brown and navy ground with hair line stripe, \$5.00 value, sale price per yard \$2.95. Sinclair & Stewart Limited.

—MEN'S LIGHT overcoats, fancy tweeds in fashionable models. Priced from \$27.50 to \$35.00, clearing in our June Sale, your choice \$16.95. Sinclair & Stewart Limited.

—HIGHER EDUCATION.—It is understood that the matter of higher education in the Consolidated School in Summerside, will likely get another airing at the meeting of the School Board on tomorrow night (Tuesday). This matter was before the School Board and the Town Council some time ago, and action was deferred for the present owing to the absence of funds. When the matter was before the council a petition supporting a grant for the purpose mentioned, which was signed by 200 persons, accompanied the request.

—A LITTLE HOLD UP.—Shortly before four o'clock Saturday a few people in Summerside were attracted to one of the public streets where a balky horse refused to obey orders. The animal was halted to the back of a team which contained a bale of hay but when the driver ordered a turn into another street the animal behind refused to obey and started to haul the team backwards, but after a little coaxing went along alright.

—WEDDING BELLS.—A quiet wedding was solemnized at the residence of Mr. and Mrs. Wm. Lockhart, Coleman, on Wednesday evening, June 1st, when Miss Floyd MacDougall, fourth daughter of Mrs. Lockhart, became the bride of Mr. Oliver Smallman, eldest son of Mr. and Mrs. Thomas Smallman, Locke Road. The bride was attended by her friend, Miss Florence McKinnon, while the groom was supported by Mr. Frank Smallman. The ceremony was performed by the Rev. W. S. Godfrey. After congratulations were extended supper was served, after which the happy couple drove to their future home in Knutford, taking with them the best wishes of their many friends.

—TALK OF A COW.—Pedestrians along Central Street, Summerside, the other day were surprised to see one of the respected citizens of the town hurriedly heading a cow along the street and frequently replying to the greeting of his friends with the query "Is this your cow?" Little did the thoughtless multitude think of the thoughts that were raging in the breast of the man engaged in so peaceful an undertaking, or the dread visions of the prison cell and the public disgrace that was rising between the drover and the driven. The cowman in question is the owner of a generous bovine which is pastured with another cow in a field some distance from his house. Both cows look alike, to this owner, so when he was returning home the other afternoon he drove along before him the only cow left in the field, and found his own bovine in the barn. With thoughts of a howling mob and the expectation of being branded as a cattle raider, the Summerside man hastened the placid cow down the street to its pastoral precincts, but stopped now and then to make sure that the friends who greeted him were not the owners of the cow.

Hot breads
 To insure light flakey muffins or popovers use the perfect blend of milk and sugar

Borden's EAGLE BRAND Condensed Milk

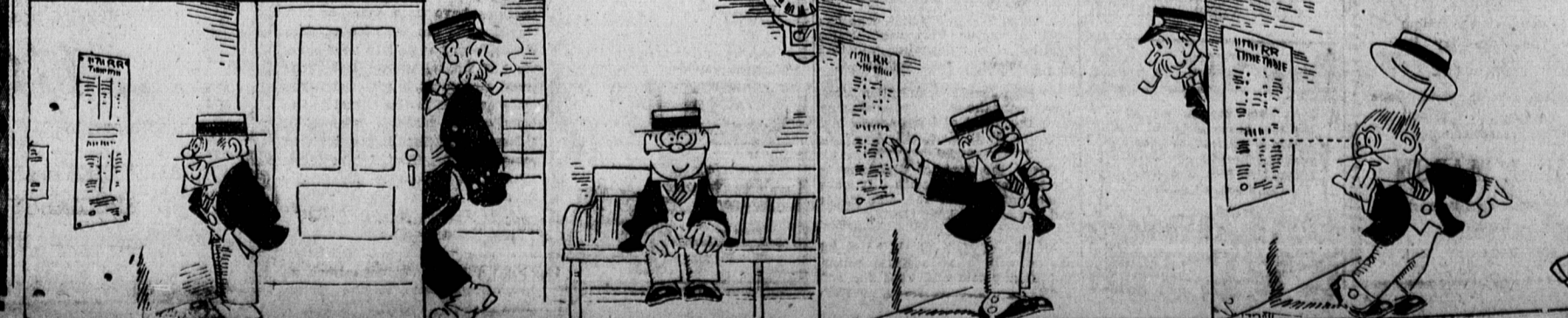
DICKY DIPPY'S DIARY.

MONDAY:— YESTERDAY AFTERNOON, AFTER A LONG HIKE IN THE COUNTRY, I CAME TO A RAILROAD STATION, AND SAW ON THE TIMETABLE THAT A TRAIN WAS DUE IN 10 MINUTES. "FINE," SAID I, "I'LL RIDE BACK."

I SAT DOWN TO WAIT, NOTICING THAT THE STATION AGENT WAS NOW AND THEN EYEING ME. I WAITED ABOUT TWO HOURS!

AT LAST I CALLED THE AGENT, AND POINTING TO THE TIME TABLE, SAID: "IT SAYS HERE THAT A TRAIN LEAVES AT 2.30. IT IS NOW 4 O'CLOCK. HOW DO YOU ACCOUNT FOR IT?"

AND HE SAID: "THAT'S A WEEK-DAY TIME TABLE."



Torn Sails and Broken Oars

The following is a synopsis of a powerful sermon delivered in the Central Christian Church yesterday morning by Rev. M. E. Genge, D. D.

Jonah 1st Chap. 15th Verse.

Jonah had his orders from God, but he disobeyed, and obeyed the voice of his cowardly conscious self.

Took ship from Japan to Tarshish, and bought his ticket. The ticket is all right if the ship reaches the destination, but if not there is no refund. Paid the fare and went, but did not arrive there on that ship. God made a transfer of the passengers and in a storm too.

Many a man's cowardly self has made him disobey the commands of God.

A fair wind and a flowing sea, at the start, and the passengers a sleep—false security, gets a rude awakening.

God always follows his commands with the force of natural laws—as His wrath of God. Oh, how the sails are torn, how the oars snap, how the timbers creak. No use Captain. Your ship is in the hand of God—and Jonah is his destination. God booked him there, by another route. No ship can carry men or nations to Tarshish when God says Nineveh. Overboard with Jonah. It is the only way to save the ship and cargo, and when God forces issues He looks after the finals. God's passenger ship—the first submarine takes Jonah to Nineveh. And now a sick fish, and a sea sick prophet. That fish made the fastest run of its life. Beate all records, the voltage of Divine wrath was its power.

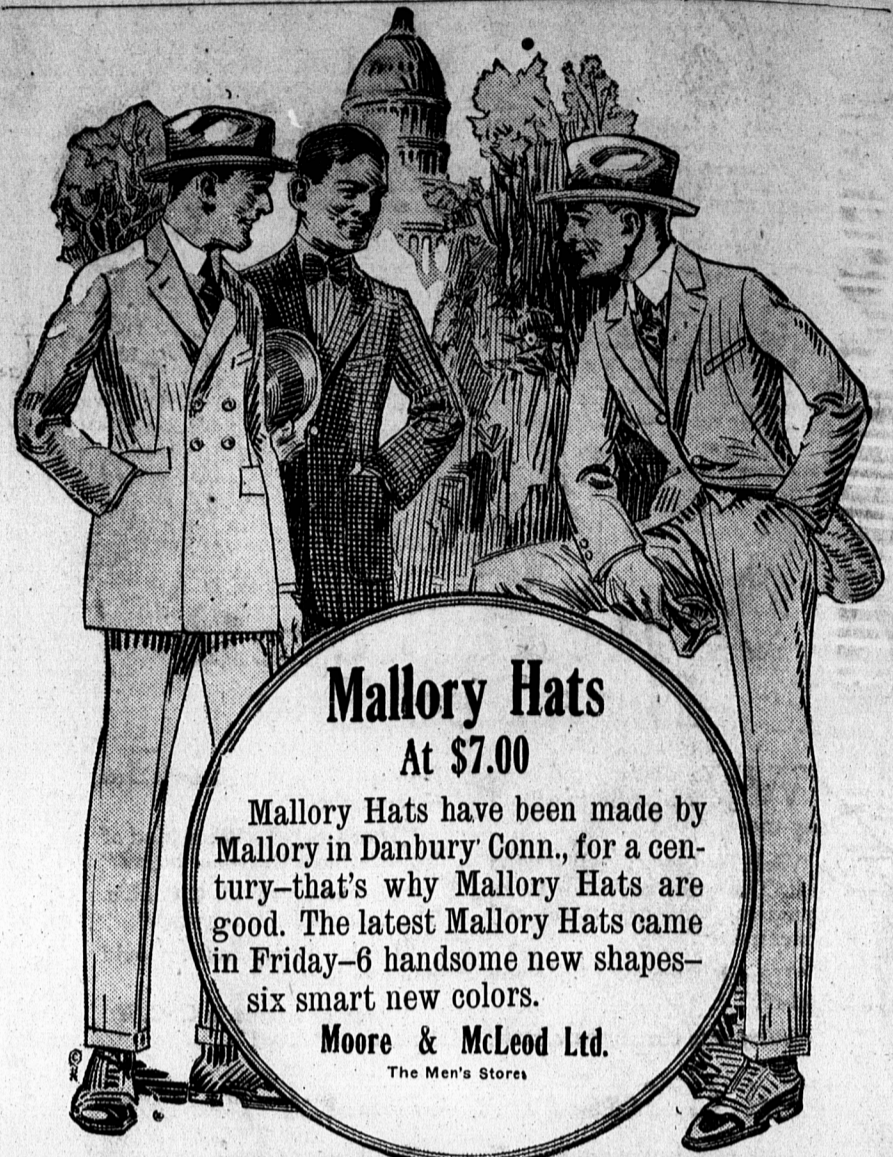
God moves in mysterious ways. The Chief of Nineveh was a fish God, and when the fish landed Jonah it made a greater impression than if Jonah had arrived in a pullman. A prophet with a message from God and their fish God, the conveyor of the messenger.

The message given, the Kings proclamation. A repentant city, a city saved. Ah! what tremendous issues hang upon the message of the Church of Christ of this generation, are we giving it? Are we going where He orders, doing what He says or are we, seeking to change the flat of the Almighty, and buying a ticket for Nineveh. Many a man has purchased his own ticket in life and for life but he has paid God's fare in landing. No tickets honored on this line unless they have the stamp of the eternal purposes of God.

Had Gas Mask for Watch

If the Germans had had a better sense of efficiency, and had spent more time on the things that really counted, they might have fared better. For instance, many German officers wasted hours hanging on their dugout walls curtains and "God Bless Our Home" pictures, which were not at all appreciated when they were captured by the allies.

One careful German soldier had a gas mask made for his watch. This energy was wasted, for the watch is now in America. The gas mask is simply an outside case—one face of it glass so that the time will show through it—which fastens tightly about the watch and allows nothing to go in or out. Of course a watch does not need a respirator, nose clip, mouthpiece or chemical box.—Popular Mechanics Magazine.



Mallory Hats At \$7.00

Mallory Hats have been made by Mallory in Danbury Conn., for a century—that's why Mallory Hats are good. The latest Mallory Hats came in Friday—6 handsome new shapes—six smart new colors.

Moore & McLeod Ltd. The Men's Store

GUM CHEWING
 The habit of many people on this continent who chew gum after meals is not without reason, though they may not be able to give a rational explanation of why they do it. The American spirit is eager and quick; and its incarnations hurry to work, hurry to and during meals, hurry home, hurry to their pleasures, and hurry to bed. Their minds are exceedingly active. These they stimulate in various ways—notably by taking coffee and by gum chewing. The resort to the use of chewing gum arises, in part, from the fact that they have swallowed their meals too rapidly. As a result starchy foods are improperly masticated and insalivated. So they chew the gum, swallow the saliva containing the ptyalin enzyme. The action of swallowing stimulates stomachic peristalsis, which hurries the food contents rapidly into the duodenum, where the starches are further acted upon by the pancreatic juice. The secretion of saliva is under the control of the nervous system. It is a reflex action. Under ordinary conditions it is excited by the stimulation of the peripheral branches of two nerves, the gustatory or lingual of the interior maxillary of the fifth nerve and the glossopharyngeal part of the eighth pair of nerves which are distributed to the nucleus pharynx conjointly. The stimulation occurs on the introduction of such as gum or other confection into the mouth, thus assisting the process of normal digestion. Chewing of gum also cleanses the teeth by removing particles of food which may have lodged about them. The process of attrition likewise tends to keep the teeth polished. Further we have no doubt that chewing gum through reflex action stimulates cerebral activity and enables the chewer to think more rapidly and more clearly. When food enters an empty stomach, as happens at the beginning of a meal, the acid first secreted combines with the protein food stuffs and so does not affect the ptyalin. It usually requires 15 to 20 minutes before the acid is secreted in sufficient quantity to be in excess, as free acid, of the amount which can combine, with the proteins and during this time salivary digestion may continue. Of course, the action of ptyalin on food taken later in a meal is promptly stopped when it reaches the stomach because of the presence of free acid. There is, therefore, a good deal to be said in favor of the use of chewing gum immediately after eating.—Reprinted from the Canadian Journal of Medicine and Surgery, May, 1921.

MACDONALD'S
PRINCE OF WALES
 CHEWING TOBACCO
The Tobacco with a heart
 Canada's standard since 1858

Dr Scholls Foot Expert
 FROM CHICAGO
 Will be at our store June 3rd and 4th. If bothered with any foot troubles consult him.
 FREE ADVICE
 There is always a rush to see the man—come early.
ALLEY & CO. LTD.
 CHARLOTTETOWN, P. E. I.

DICKY DIPPY'S DIARY.
 MONDAY:— YESTERDAY AFTERNOON, AFTER A LONG HIKE IN THE COUNTRY, I CAME TO A RAILROAD STATION, AND SAW ON THE TIMETABLE THAT A TRAIN WAS DUE IN 10 MINUTES. "FINE," SAID I, "I'LL RIDE BACK."
 I SAT DOWN TO WAIT, NOTICING THAT THE STATION AGENT WAS NOW AND THEN EYEING ME. I WAITED ABOUT TWO HOURS!
 AT LAST I CALLED THE AGENT, AND POINTING TO THE TIME TABLE, SAID: "IT SAYS HERE THAT A TRAIN LEAVES AT 2.30. IT IS NOW 4 O'CLOCK. HOW DO YOU ACCOUNT FOR IT?"
 AND HE SAID: "THAT'S A WEEK-DAY TIME TABLE."
 —By SINNOTT.