

STOCK QUOTATIONS

War News Affects N.Y. Exchange

(By Frank MacMillen)
(Associated Press Financial Writer)
(A.P. By Guardian's Special Wire)
NEW YORK, Oct. 2.—Europe's war cloud threw its shadow over Wall Street today as nervous traders pressed stocks on the market in the widest break in 14 months.

At the same time Europeans bought American commodities as they feared interrupted deliveries, and local speculative sources followed suit. Wheat was pushed up the full day's limit for some deliveries for a time in Chicago, and cotton was snapped up at rapidly rising prices.

The Associated Press average of 60 stocks dropped 1.5 points, the largest day's decline since July 26, 1934, the culmination of the summer decline last year. Today's closing figure was 47.3, fairly evenly distributed between the industrials, rails and utilities.

While the decline extended over a broad front, even affecting the so-called "war babies" about as much as other divisions, turnover was no greater than it has been on a number of occasions in recent weeks. Volume in the stock exchange was 2,198,700 shares.

Bonds did no better than stocks. Selling was most concentrated in rail issues, but foreign government issues, especially the Italians were under pressure, with losses in the latter running from 1 to 1.5 to 4 1/2 points. U. S. government obligations showed losses ranging from 5-32 to 14-32 of a point each.

The periods of greatest pressure in the market followed the morning news of the protest by Ethiopia that its territory was being "invaded" by Italy, and again in the late afternoon when Mussolini's war-like utterances to his mobilized people became known.

Shares which showed losses at the close of around 2 to 4 points or so included Union Pacific at 94, American Tobacco "B" at 101, Allied Chemical at 165, New York Central at 20 1/8, U. S. Steel at 42 1/8, Bethlehem at 35, American Telephone at 135 5/8 and American Can at 138 1/4.

Canadian issues shared in the general decline. Losses ranging from one point to more than two were recorded by McIntyre-Porcupine, Distillers-Seagram, Hiram Walker, Ford of Canada "B", and St. Regis Paper. Fractional regressions occurred in such issues as Canadian Pacific, Dominion Stores, International Nickel, Dome Mines, Canadian Industrial Alcohol, Hollinger and Lake Shore.

What stocks did:

Advances	43	202
Declines	713	408
Unchanged	88	171
Total issues	842	781

Mt'l. Stock Exchange

(Supplied by Pittfield and Co. Members of Montreal Stock Exchange)

Stocks	Open	Last
Bell Tel	130 1/4	130
B. C. P. W.	24 1/2	24
Canadian	7 1/2	7 1/2
Dom. Steel	4 1/4	4
Can. Cement	5 1/4	5 1/4
Can. Ind. A. I.	9 1/4	9 1/4
Can. Pac. Ry.	29	28
Dom. Bridge	29	28
Imp. Tob.	12 1/2	12 1/2
Int. Nickel	30 1/2	29 1/2
McColl Front	12 1/2	12
Nat. Brew.	36	34
Mont. Pow.	30 1/2	29 1/2
Nat. Steel	13	13
Power Corp.	7 1/4	7 1/4
Shawinigan	16 1/2	16 1/2
So. Can. P.	10 1/2	10 1/2
Steel of Can.	10 1/2	10 1/2

BANKS	Open	Last
Bk of Canada	33 1/2	32
Bk of Nova Scotia	248	248
Bk of Montreal	153	152
Royal Bk of Can.	114 1/2	114 1/2
Can. Bk of Commerce	123	123

War Threat Reflected On Market

(C. P. By Guardian's Special Wire)
MONTREAL, Oct. 2.—The European war cloud darkened the Montreal Stock Exchange today and listings swerved lower under heavy selling pressure.

Power stocks were sold heavily not only as a result of the war scare but because of yesterday's refusal by the Ontario Hydro-Electric Commission to accept delivery of 5,000 horsepower from the Gattineau Power Company and 87,000 horsepower from Beauharnois Light, Heat and Power Company. Montreal Power fell 1/2 to 30 and Shawinigan 1/2 to 16 1/2 while others were unchanged to slightly lower. Canadian Hydro Electric Preferred was off a point at 44 1/2.

Construction issues were also among leaders in the downturn. Liquor and metal shares were sold heavily and a number of specialties also displayed broad losses.

Steel of Canada at 4 was off 1/2 to lead the construction group. Canadian Cement Preferred dropped 1/2 to 51 and Gypsum was down 3/4 to 4 1/2. Massey Harris and a few more also showed small losses.

Among the beer and liquor stocks, Associated Breweries fell 1/2 to 9 1/2 and National Breweries was off a point at 35. Industrial Alcohol lost a point at 7. Consolidated Smelters showed the broadest decline of the list, easing 2 points at 168. International Nickel, another former market leader, fell 1/2 to 29 1/2 and Canadian Pacific was off 1/2 at 8 1/2. Hollinger slipped 85 cents at 11.75.

Sales totalled 16,510 shares; bonds \$7,750.

Markets At A Glance

(Canadian Press)
Toronto and Montreal—Industrial stocks off sharply.
Toronto mines—Lower.
New York—Stocks sold down.
Winnipeg—Wheat up 3 cents.
New York—Cotton and sugar higher; rubbers and coffee lower.

GRAIN

(Canadian Press)
CHICAGO, Oct. 2.—Scouring the five cents limit permitted for one session, wheat futures jumped to the highest price level in more than a year today in a bull market stimulated by reports of the opening of war in East Africa.

With world surplus of wheat reported the lowest in seven years the reported presence of war conditions was a dominant factor in all world grain markets and prices skyrocketed. The broadest buying movement in months was witnessed in the wheat pit here, and the advance rushed shortly to cover.

Reaching about a cent from the day's high, wheat closed 3 1/4-3 1/2 cents above the previous finish, December 1.00 1/2-1.07 while corn was 2 1/2-3 1/4 up. December 61 1/2-62. At the high end, corn was within a minor fraction of the 4-cent limit permissible.

Oats closed 1 1/2-1 1/4 up, rye 3 1/4-3 1/2 up. Flour was unchanged. Provisions also were higher.

PRODUCE

(Canadian Press)
MONTREAL, Oct. 2.—Prices held a steady tone on the Montreal dairy and produce markets today. The egg market graded shipments in carlots or less were generally quoted at 32 cents a dozen for A-large, 30 cents for B-medium, 24 1/2 to 25 cents for B and 21 cents for C.

No 1 grade butter in carlots or less was again quoted nominally at 23 cents a pound with small lots to retailers at 25 cents a pound for solids and 26 cents for prints.

No 1 creamery butter sold at 12 1/2 to 13 cents a pound and no 1 Quebec at 12 1/2 to 12 3/4 cents.

Potatoes were 70 to 80 cents for no 1 New Brunswick, 70 to 75 cents for no 1 Quebec mountains and 45 to 60 cents for no 2 Quebec cobbles.

Livestock

(Canadian Press)
MONTREAL, Oct. 2.—Steady to firm prices were noted on the two main live animal markets today and offerings totalled 1,115 head. Receipts were composed of 96 cattle, 63 calves, 150 hogs and 2,836 sheep and lambs to cover.

The cattle were practically all steers and were firm at \$3.50 to \$6.00 for grassers to \$8 for good quality calves.

Good ewes and wethers brought \$3.50 to \$6.00, with lambs between 100 and 110 lbs., brought \$5.50 bucks and culls were \$4.50 sheep were from \$1.50 to \$3.

Bacon hogs brought \$2.95 fed and watered. Slightly drew \$1 premium. Butchers and heavies were \$5.75. Extra heavies and light hogs \$5.25. Sows were from \$7 to \$8.

EXCHANGE

(Canadian Press)
Closing exchange rates—
At Montreal—Pound 4.97 3/16; U. S. dollar 1.01 15-32; franc 6.68.
At New York—Pound 4.97 3/16; U. S. dollar 1.01 15-32; franc 6.68.
At Paris—Pound 74 43 fr; Canadian dollar 14.99 fr; U. S. dollar 15.18 fr.
In gold—Pound 12; Canadian dollar 58.70 cents; U. S. dollar 69.46 cents.

NEW YORK, Oct. 2.—Foreign exchange steady. Great Britain 4.97 3/16; low 4.89 3/16; close 4.89 3/16; 60 day bills 4.89 3/16; France demand 6.68 3/4; Italy 1.01 15-32; Canada 98 15-32; Germany free 40.25; rec tourist 27.25; rec commercial 20.15.

Miscellaneous

(Canadian Press)
MONTREAL, Oct. 2.—Wheat, northern no 2 \$1.00.
Barley, Canada no 2 western no 3 44.
Flour, spring no 1 38.
Flour, winter wheat patents, firsts \$6.10.
Flour seconds \$6.70.
Flour, winter wheat patents, choice \$4.10 to \$4.20.
Flour white corn \$5.00.
Hay no 2 per ton carlots \$10.00 to \$11.00.
Rolled oats bag 90 lbs \$3.05.
Meat no 1 Ont 12 1/2 to 13.
Cheese no 1 Que 12 1/2 to 12 3/4.
Butter no 1 23.
Eggs in cartons A 1 large 43.
Eggs A 1 medium 41.
Eggs A large 37.
Eggs A medium 35.
A pullets 33.
Eggs B medium 28.
Eggs C 25.
Potatoes No 1 Que mts 80's 70-75.
No 2 Que cobbles 80's 45-60.
No 1 N B mts 80's 75-90.

MINING

(Canadian Press)
TORONTO, Oct. 2.—War news put the skids under the Toronto mining market today, sending prices tumbling and with the decline volume slumped to better than half a million shares. Early declines touched chiefly the recently active golds but as reports of Italy's advance spread the selling widened to other groups and losses were general at the close.

The exchange index for the golds advanced about 4 points from 163.69 to 167.03 where it is little better than two points above the year's low. Miscellaneous mines index led by 10 points, but the biggest drop of 15, backing up to 39 1/2. Lake Shore dropped 1 1/2, McIntyre a point and Wright, Hargreaves, Teck, Hughes, Bralorne and Pioneer 10 to 30 cents each.

TORONTO, Oct. 2—

Currencies

(Canadian Press)
MONTREAL, Oct. 2.—Currencies were again irregular on Montreal foreign exchange today, in light trading. The pound sterling rose 1/4 of a cent at \$4.97 3/16 and the United States dollar was up 5-32 of one cent at 1.01 15-32 per cent premium. The French franc remained unchanged at 6.68 cents.

NEW YORK, Oct. 2.—Leading currencies recorded further declines in the foreign exchange markets today. The Canadian dollar extended its discount from 1.5 to 1.37-52 per cent. The pound sterling was off half a cent at \$4.97 3/16 while the French franc, closing at 6.68 cents, showed a loss of .005 of a cent.

MT'L. CURB

(Supplied by Pittfield and Co. Members of Montreal Stock Exchange)

Stocks	Open	Last
Acme Oil	15	15
Am Oil	24 1/2	23 1/2
Dis. Sog	24 1/2	23 1/2
High Gold	24 1/2	23 1/2
Inter Pet	34	32 1/2
Melchers A	8	8

Coin Curios

Certain pennies are at a premium, highly valued by numismatists. As recently as 1933 only six pennies were minted, and it is already impossible to assess their value, for three lie under foundation stones, one is in the British Museum, and the other two are in the Mint museum. There is a curious legend, which dies hard, connected with the pennies minted in 1864. It has long been rumored that a crock of gold was accidentally spilled into the bronze at the Mint, and the Mint still receives letters concerning them and their supposed value. As a matter of fact the 1864 penny is worth about 15s., not because there is gold in it, but simply on account of its comparative rarity, since it was the year of the change over from copper to bronze.

What is known as the Gothic coin of 1847 once had a value of 80s., but can now be bought for 10s. It represents one of the Mint's few mistakes, for, after 7,030 had been made it was found that the head of the young Queen was much too difficult to strike, and the issue was suspended. Offers have recently been made of £2,000 for one of the 550 Jubilee Crown Pieces, of which only twenty-five were minted, and £6 is said to have been asked for a special pattern crown piece in silver of which 25,000 were distributed by the Mint.

JOHANNESBURG, South Africa—Three players in a football game were struck by lightning without being seriously injured. Most of the other players felt the shock.

Advertising Rates—Payable in Advance

Central-Canadian locals, 4c per word; Western and Eastern locals, 2c per word; Announcements and Coming Events, 2c per word; Classified per word; In Memoriam Notices, 7c per inch; Notices of Birth and Death, 7c per inch; Letters of Condolence, 7c per word; Other rates on application. Minimum charge for any advertisement twenty-five cents.

For Sale

FIRE WOOD FOR SALE READY for stove. Apply Gordon Ramsay, North River. L-1060-10-2-31.

J. R. BREHAUT, MONTAGUE, Potatoes Digging for sale. L-9893-9-17-19-21-24-26-28-10-1-3.

FOR SALE—AUCTION FORTY-FIVE Bridge and Whist Score Cards. Guardian Central Job Printery.

FOR SALE—AT BONSHAW, farm of 80 acres with good buildings. Apply Geddie McLean. L-1061-10-2-31.

FOR SALE—STAINER VIOLIN 200 years old. Also Gurney Hot Water Furnace number five. Apply 175 Fitzroy Street. L-1037-10-2-21.

Sales Help—Male or Female

WANTED—AMBITIOUS SALES people, men and women, spare time, to handle our line of Personal Christmas Cards, featuring the following outstanding items: fourfold pastel tinted parchment, gravure etchings, many cut-out style cards with tip-on pictures, attractive calendars, humorous cards, envelopes with wallet flap style, fancy lined and decorated to match cards. Elaborate use of gold and silver designs with brilliantly coloured inserts. Dainty initial cards that are new and different. Seventy exquisite numbers to choose from styled in case form equipped with handle. Prices start at one dollar per dozen. Liberal commission. Write Premier Art Guild, 202 Castle Building, Montreal. N-23-71.

Male Help Wanted

WANTED—MAN TO WORK ON farm. Steady job. Apply N. A. Darrach, East Royalty. L-1058-10-2-31.

Wanted

WANTED TO BUY A PIECE OF land on or near St. Peter's Road. Apply "X. Y." care Guardian. L-1069-10-3-31.

Boarders Wanted

WANTED—BOARDERS OR roomers in heated house. Rooms large and airy, two with fireplaces. Apply "X." Guardian. L-1077-10-2-31.

Female Help Wanted

WANTED—AN EXPERIENCED maid capable of doing plain cooking. Apply Russ Hotel. L-1070-10-3-31.

To Let

COTTAGE FOR RENT, 34 ORLEANS St. L-1046-10-1-31.

HOUSE TO LET—ALL MODERN conveniences. Apply 7 Prince St. L-1066-10-3-31.

FOR RENT—FURNISHED HOUSE Large sunny room. Good location. Apply Guardian. L-1065-10-3-31.

TO LET—HEATED APARTMENT, partly furnished, electric range. Adults only. Apply Guardian. L-1050-10-1-31.

The RT. HON. R. B. BENNETT

PRIME MINISTER OF CANADA

WILL ADDRESS A PUBLIC MEETING

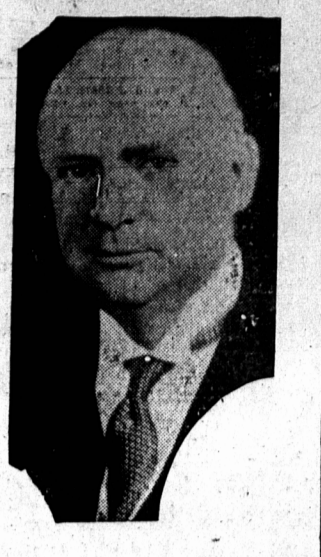
—AT THE—

CHARLOTTETOWN FORUM

SATURDAY, October 5th

8.30 p.m.

All Cordially Invited



N. Y. Stock Exchange

(Supplied by Pittfield and Co. Members of Montreal Stock Exchange)

Stocks	Open	Last
Am. For. Pr.	5 1/2	5 1/2
Am. For. Pr. Pfd.	29 1/2	29 1/2
Am. Waterworks	15 1/2	15 1/2
Am. Can.	140 1/2	137 1/2
Am. Rad.	16 1/2	15 1/2
Am. Tel. Tel.	137 1/2	133 1/2
Am. Union	37 1/2	35 1/2
Atchafalpa	40 1/2	45
Bell Ohio	14 1/2	13 1/2
Gen. Elec.	140 1/2	137 1/2
Beth. Steel	35 1/2	34 1/2
Case	78	76 1/2
Chrysler	27 1/2	26 1/2
Gen. Motors	29 1/2	28 1/2
Elec. Auto Light	20 1/2	20 1/2
Elec. Bond Share	11 1/2	10 1/2
Gen. Elec. Pfd.	32 1/2	31 1/2
Gen. Mot.	45 1/2	44 1/2
Gr. Nor. Pfd.	24 1/2	23 1/2
Int. T. and T.	21 1/2	20 1/2
Deere	71	69 1/2
Min. Hud. Pr.	7 1/2	7 1/2
Mont. Ward	31 1/2	30 1/2
St. Anthony	29	28 1/2
N. Y. Central	10 1/2	10 1/2
Radio	7 1/2	6 1/2
So. Pac.	17 1/2	16 1/2
Gen. Elec. Pfd.	32 1/2	31 1/2
Vanderbilt	17 1/2	16 1/2
U. S. Steel	43 1/2	42 1/2
Westinghouse	78 1/2	77 1/2

Friendship Important to Canada

NEW YORK, Oct. 2.—(C.P.)—Canada "now increasingly thinks of herself as a pacific country and is deeply concerned with the changing balance of power in the Pacific," Bartlett Brebner, monthly commentator on Canadian affairs in the magazine Current History and a member of the faculty of Columbia University, said in a broadcast address.

Mr. Brebner, a graduate of the University of Toronto, said the "great question to Canadians is the reconciliation of British and American policies in the Pacific, because, although Canada can and does act independently of both countries, it is to her interest to be as friendly as possible with both."

CUTS DOWN RUNS

LONDON—English cricket batting averages strength the opinion that the new leg-before-wicket experimental rule has evened the balance of power between batsman and bowler. Only seven players exceeded 2,000 runs, 12 less than last season, while 76 reached 1,000 compared with 85 in 1934. On the other hand 27 bowlers took 100 wickets or more, compared with 18 the previous year.

Political Meetings In King's County

POLITICAL MEETINGS WILL BE HELD IN KINGS COUNTY AS FOLLOWS:

St. Georges, Tuesday, Oct. 1st	Georgetown, Tuesday, Oct. 8th
Cardigan, Thursday, Oct. 3rd	Cambridge, Wednesday, Oct. 9th
Montague, Friday, Oct. 4th	Murray Harbour, Thursday, Oct. 10th
Headlands, Monday, Oct. 7th	Murray River, Friday, Oct. 11th

ALL MEETINGS BEGIN AT 8 O'CLOCK P. M.

A. A. MACDONALD—T. V. GRANT

L8866-9-11-12-14-17-19-21-24-26-28-10-1-3-5-8-10

Political Meetings Queen's County Liberal Association

The Liberal candidates, James J. Larabee and Peter Sinclair will address the electors of Queen's County at the following places upon the dates given below:

Afton Hall	Oct. 4	Bradalbane	Oct. 9
Hope River	7	Crapaud	10
Clifton	8	Bonshaw	11

Conservative, and Reconstruction Party candidates are invited to attend, and if present will be given the same period of time as is given to the Liberal candidates.

All meetings start at 8 o'clock.

R. C. CHANDLER, President.
G. J. TWEEDY, Secretary.

L8856-9-11-14-17-19-21-24-26-28-10-1-3-5-8-10

POLITICAL MEETINGS

The Conservative Candidates
W. CHESTER S. McLURE
and
JOHN H. MYERS
will meet the electors of Queens County at the following places and dates:—

Afton Hall—Wednesday, October 2nd.
Rustico—Friday, October 4th.
Crapaud—Monday, October 7th.
Harrington Hall, Brackley Point—Tuesday, October 8th.
Hope River—Wednesday, October 9th.

All electors are cordially invited to attend.

Meetings open at 8 P. M.

W. CHESTER S. McLURE
JOHN H. MYERS.

RECONSTRUCTION PARTY MEETINGS

Honor roll for the months of August and September:
Senior Department:
Grade X—1, Clara Clarkin; 2, Mary Coady; 3, Mary Hagan.
Grade VIII—1, Clara McDonald; 2, Domien Trainor; 3, Basil Murray.
Grade VII—1, Blanche Murray; 2, Eileen Clarkin; 3, Cecel Murray.
Primary Department:
Grade V—1, Joseph Coady; 2, Teresa Hogan; 3, Jean McDonald.
Grade IV—1, Myrtle and Catherine Costello (equal); 2, Teresa Quinn; 3, Noreen Trainor.
Grade III—1, Russel McDonald; 2, Blanche Hogan and Rosalie Quinn (equal); 3, Irene Clarkin.
Grade II—1, Dorothy McGinn; 2, Eleanor Trainor.

RECONSTRUCTION PARTY MEETINGS

Thursday, Oct. 3—Webster's Corner and Pownall.
Friday, Oct. 4—Iona and Flat River.
Saturday, Oct. 5—Bradalbane and Fredericton.
Monday, Oct. 7—Tyronne and North River.
Tuesday, Oct. 8—Crapaud and Bonshaw.

All meetings at 8 p.m. Further meetings announced later.

INGS AND HUGHES, Candidates.
L-1076-10-3-61