

"Its Only a Cold, A Trifling Cough."

Thousands have said this when they caught cold. Thousands have neglected to cure the cold. Thousands have filled a Consumptive grave through neglect.

It has stood the test for many years, and is now more generally used than ever. It contains all the lung healing virtues of the pine tree combined with Wild Cherry Bark and other pectoral remedies.

"Mrs. J. Bowser, Grafton, N.S., writes: 'Two winters ago I suffered severely with a very bad cold and asthma. I was so bad I could not get my breath, and very often thought I would choke. My head became very much frightened, and I got a bottle of Dr. Wood's Norway Pine Syrup and it gave me almost instant relief. I can recommend it to anyone having the least kind of a cold.'"

Furness, Withy & Co., Ltd STEAMSHIP LINERS

Table with columns for destination (London, Liverpool, etc.), ship name, and departure dates.

ROYAL MAIL EXPRESS

Montreal and Quebec to Liverpool. Sat. Nov. 7. Lake Manitoba, Ten New 12. Empresses of the Sea.

GUARDIAN CLASSIFIED ADS

MORNING PAID. PER WORD (six words to line) - 10c for one insertion, 10c for three insertions, 10c for a week, 10c for two weeks, 10c for three weeks, 10c for a month, 10c for two months, 10c for three months, 10c for six months, 10c for a year.

AGENTS WANTED

AGENTS WANTED-To sell complete line of Northern Grower's Nursery Stock. Big cash commission paid weekly.

WANTED

WANTED a young girl for general housework. Good wages. References required. Apply to Mrs. George E. Auld, Brighton, 11-194dt.

FOR SALE

APPLES for sale. A few barrels No. 2 Wealthy apples to be sold cheap to close out. John Newson, 11-181dmt.

CHARLOTTETOWN MARKETS.

Table listing market prices for various goods: Beef quarter, Flour, Oatmeal, Cabbage, etc.

CALENDAR for NOVEMBER, 1908

Calendar table showing moon phases, moon rises, moon sets, and high water for November 1908.

THE GRAVE ROBBED OF ITS PREY

GIVEN UP BY DOCTOR--NOW IN PINK OF HEALTH!

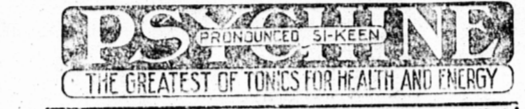
No words of ours could be more convincing of Psychine's power to make the sick well than those of John A. Galbraith, a well-to-do farmer of Plympton, Ont. He says: "I did not seem able to gain any strength after the attack of pneumonia. One doctor said that tuberculosis had developed, that I could not recover, and advised me to settle all my affairs as quickly as possible."



PASTOR SAID PSYCHINE SAVED HIS WIFE

I GAVE HIM HOPE

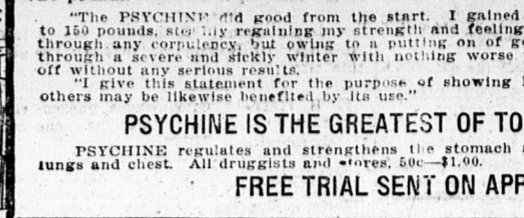
Rev. C. E. Burrell, Baptist Pastor, Forest, Ont. writes: "Several years ago my wife was so seriously ill of lung trouble as for months to be unable to walk, at which time a noted physician told me that the rest of her life would be a struggle."



PSYCHINE THE GREATEST OF TONICS FOR HEALTH AND ENERGY

Trial Bottle Free

Send Coupon, with your name and address, to Dr. T. A. Slocum, Limited, Slocum Building, Spadina Ave., Toronto, and receive a trial bottle of Psychine FREE.



DRUGGIST SOLD PSYCHINE AND NOTED IMPROVEMENT

I Sold Him Psychine

Mr. Ralph Scott, druggist, Forest, Ont. writes: "I have read the statements made by Mr. J. A. Galbraith and Rev. C. E. Burrell regarding the results of the use of PSYCHINE."



THE DRUGGIST SPEAKS

Mr. Ralph Scott, druggist, Forest, Ont. writes: "I have read the statements made by Mr. J. A. Galbraith and Rev. C. E. Burrell regarding the results of the use of PSYCHINE."

"The PSYCHINE did good from the start. I gained in weight at the rate of half a pound a day until I went up to 150 pounds, feeling my strength and feeling better. I actually had to have my clothes enlarged, now I wear a size 40, and I am putting on a good deal of weight."

PSYCHINE IS THE GREATEST OF TONICS. THERE IS LIFE IN EVERY DOSE.

PSYCHINE regulates and strengthens the stomach and is an infallible remedy for all disorders of the throat, lungs and chest. All druggists and stores, 50c-1.00.

FREE TRIAL SENT ON APPLICATION. (SEE COUPON).

"I SAW HIM"

H. J. Pettipiece, Esq., ex-M.P.P., publisher of The Forest Free Press, says: "The Galbraith cure is considered a miracle here. I know his case was considered hopeless by his physician, and that something had pulled him together. I have only just learned that it was PSYCHINE."

Three months after Mr. Pettipiece writes: "I saw Galbraith in town yesterday. He is looking the pink of health--says he never felt better, and that he is doing his share of the work on the farm, instead of being under the sod, where just one year ago, the doctors told him he would be."



HOW WORKS ON FARM BY PINK OF HEALTH SAID BY PETTIPIECE EX-M.P.P.

CONDITIONS OF BIBLE STUDY CONTEST

- 1. Persons may join the club at any time during the year, but must, of course answer the 52 questions to qualify for the prize. It is however desirable that the questions be answered as the lessons are studied.

Hotel Dufferin

ST. JOHN, N. B. Foster Bond Co. J.H. BOND Manager

Geos Inman BARRISTER AND ATTORNEY

MONEY TO LOAN

CANADIAN PACIFIC RY

MONTREAL and VANCOUVER IMPERIAL LIMITED EXPRESS

INTERCOLONIAL RAILWAY

FOR COPY OF "Notes By The Way" with time table of MARITIME EXPRESS

Canada's Train, noted for the excellence of Sleeping and Dining Car Service, bet Halifax and Montreal

Apply to General Passenger Dept. Moncton, N. B.

MONTAGUE MARKETS.

Table listing market prices for various goods: Herring, Flour, Roller Process, etc.

Domain Atlantic Railway

Steamship Lines to Boston via Yarmouth. The popular Fast Line. Between Eastern Nova Scotia and Boston via Truro, Windsor, and Halifax.

Minards Liniment Co., Limited.

Gentlemen, I have used MINARD'S LINIMENT on my vessel and in my family for years, and for the every day ills and accidents of life I consider it has no equal.

Eastern Steamship Company

Reliable and Popular Rout Between St. John and Boston. First Class Fair \$3.50. Staterooms \$1.00.

Proposed Sailings Black Diamond Line Steamers from Montreal and Ch'Town this season.

S. S. "Cacouna" about Nov 15th. S. S. "Cape Breton" "Nov 20th".

GUARDIAN BUSINESS LOCALS

MORNING DAILY OR RURAL, DAILY PER WORD (six words to line) one cent for one insertion, 10c for three insertions, 10c for a week, 10c for two weeks, 10c for three months, 10c for six months, 10c for a year.

Our ladies' coat dept. popular spot these notwithstanding the fact that it is still early in the season a number have already been sold.

Our handsome new dress goods are creating quite a furore, and are going like the proverbial "hot cakes".

Ladies see the elegant range of Fall Coats we are showing in our store. semi-fitted and loose back to a wide range of prices.

Our Miss Walpert is now ready to fill millinery orders in her usual artistic and satisfactory manner.

Our Miss Walpert is now ready to fill millinery orders in her usual artistic and satisfactory manner.

Our Miss Walpert is now ready to fill millinery orders in her usual artistic and satisfactory manner.

Our Miss Walpert is now ready to fill millinery orders in her usual artistic and satisfactory manner.

P. E. I. RAILWAY

Commencing Monday, October 12th, 1908, trains of this Railway will run as follows:

Table showing train schedules for P.E.I. Railway, including destinations like St. John, Moncton, and Miramichi.

Beautiful, artistic millinery, that the kind turned out in our workrooms. If nestled in work, correctness in style, and moderation in prices count for anything, Miss Walpert is truly a successful milliner.

Twenty times a day, we hear the same story "Your hats are the best and cheapest in the City," and indeed, we are not surprised. Unremitting personal attention to the smallest details, ensures a stock of millinery materials and shapes, the best and cheapest we have ever shown you, while a large and expert staff of milliners, with Miss Walpert at their head, is sufficient guarantee of careful and artistic work.

Trains are run by Atlantic Standard Time. P. E. I. R. 3. A. SHARI, Supl. P. E. I. R. POTTINGER, I. S. O. Man. Gen. Govt. Mon