

STOCK QUOTATIONS

FINANCIAL NEWS BRIEFS

(Received over Pittfield and Co's Private Wire)

Alberta Oil-The Royalle Oil Co. has notified Turner Valley operators that effective November 1 only 45 per cent of potential production of Turner Valley will be taken.

LONDON, Oct. 30—Great Britain may send additional troops to Shanghai as a result of alleged Jap attacks on British outposts there, it was reported. There was no immediate indication that Britain will take any more concrete action than a formal protest to Japan.

BERLIN, Oct. 30—The office of the Reich commissioner for price fixing today concluded an agreement with manufacturers and dealers to reduce prices of a large number of trade manufacturing.

BOMBAY, Oct. 30—Gold amounting to 361,773 pounds was shipped from India.

OTTAWA, Oct. 30—Canadian refunding loan of \$100,000,000 to be offered Wednesday. Liverpool wheat opened 1-8 to 3-8 lower and closed unchanged to 7-8 lower.

Steel Co. of Canada—Steel ingot production still engages full manufacturing capacity, backlog of unfilled orders sustained in some lines, lower in others. High rate of production anticipated over balance of year.

McCull Frontenac—President Irwin says proceeds of present stock issue will be used to reduce bank loans. He says earnings improved this year and after all charges and a full year's pfd dividend earnings for eight months ended Sept. equivalent to 74 cents per common share as against 45

cents full year ended January 1937. Bell Telephone—For 9 months this year stations in operation increased 3.8 per cent over like 1936 period. Argentina Wheat Ban—Argentina government issues decree prohibiting exportation of wheat and flour until further notice, attempting to force bread prices down. U. S. Rails ask Increase—Heads of the nations railroads will ask I. C. C. for freight and passenger rate increase to yield \$508,000,000 annually. A flat increase of 15 per cent in most cases.

NEW YORK, Oct. 30—Remarks of President Roosevelt concerning taxes are receiving front page publicity. One additional thing the President mentioned yesterday not reported on the tickers is that he reminded reporters that none of the discussions of federal taxation had considered the sale taxes on commodities which affect all classes of people alike. An extra dividend of \$3 by Chrysler came as no surprise. It will probably have a favorable influence on the stock. General Motors directors are scheduled to meet for dividend action after the close on Monday. Other news in the immediate future which should have some effect on the market is the steel operations report to be published on Monday by the American Iron and Steel Institute and the local elections throughout the country on Tuesday. We would expect a decidedly irregular two hour session today and believe there is a further recovery in the morning. Rail action should be watched closely.

New York Stock Exchange

(Supplied by Pittfield and Co. Members of Montreal Stock Exchange and Montreal Curb)

Table with columns: Stocks, Open, Close. Lists various stocks like Abitibi, Asbestos, B A Oil, etc.

Montreal Curb

(Supplied by Pittfield and Co. Members of Montreal Stock Exchange and Montreal Curb)

Table with columns: Stocks, Open, Close. Lists various stocks like Bell Tel, Brazilian, Bruck Silk, etc.

Mining

TORONTO, Oct. 31—(Canadian Press)

Table with columns: Stocks, Open, Close. Lists various mining stocks like Arlon, Am Oil, A P Com, etc.

Montreal Stock Exchange

(Supplied by Pittfield and Co. Members of Montreal Stock Exchange and Montreal Curb)

Table with columns: Stocks, Open, Close. Lists various stocks like Bell Tel, Brazilian, Bruck Silk, etc.

PRODUCE PRICES

WINNIPEG, Oct. 31—(CP)—Closing future quotations wheat—Oct 123 1-4; Nov 120 3-4; Dec 117 3-8-3-4; May 115 3-4-7-8. Oats—Oct 53 1-2; Nov 51 7-8; Dec 47 1-2; May 45 7-8. Barley—Oct 61 1-4; Nov 60 3-4; Dec 59 1-4; May 58. Cash prices: Wheat—No. 1 hard 138 3-4; No. 2 134 3-4; No. 3 130 3-4; No. 4 126 3-4; No. 5 122 3-4; No. 6 118 3-4; No. 7 114 3-4; No. 8 110 3-4; No. 9 106 3-4; No. 10 102 3-4; No. 11 98 3-4; No. 12 94 3-4; No. 13 90 3-4; No. 14 86 3-4; No. 15 82 3-4; No. 16 78 3-4; No. 17 74 3-4; No. 18 70 3-4; No. 19 66 3-4; No. 20 62 3-4; No. 21 58 3-4; No. 22 54 3-4; No. 23 50 3-4; No. 24 46 3-4; No. 25 42 3-4; No. 26 38 3-4; No. 27 34 3-4; No. 28 30 3-4; No. 29 26 3-4; No. 30 22 3-4; No. 31 18 3-4; No. 32 14 3-4; No. 33 10 3-4; No. 34 6 3-4; No. 35 2 3-4.

Currencies

MONTREAL, Oct. 31—(CP)—Pound Sterling declined 9-32 cent on Montreal foreign exchanges today to \$4.95 29-32 while the United States dollar eased 1-64 cent to 1-64 per cent discount. The French franc was unchanged at 3.37 cents.

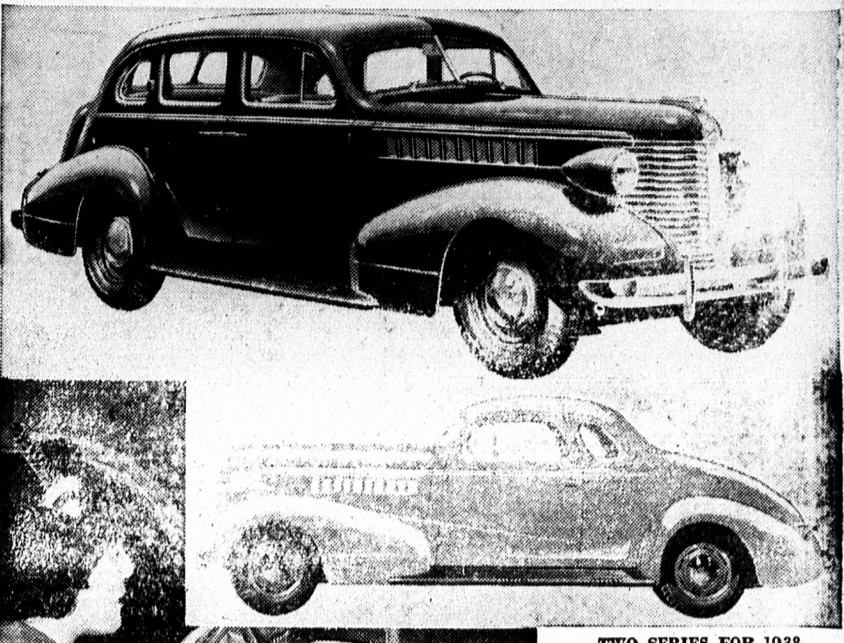
UNDATED MONEY BOX

(By The Canadian Press) Closing exchange rates At Montreal—Pound 4 95 29-32; U. S. dir. 99 83-84; franc 3.37. At New York—Pound 4 96 1-8; Canadian dir 1 00 1-32; franc 3 37 1-4. At Paris—Closed. In London—Pound 12s. 2d; U. S. dir 59 32 cents; Canadian dir 59 30 cents.

UNLISTED

Table with columns: Stocks, Open, Close. Lists various unlisted stocks like Cen Man, Coast Cop, Dal Oil, etc.

PONTIAC ANNOUNCES NEW MODELS



TWO SERIES FOR 1938 The Pontiac Six for 1938, just announced, offers two handsome lines of body models, the De Luxe and the Special. A De Luxe sedan, above, shows the new hood louvre treatment. Below, a coupe of the Special series, with shorter wheelbase and marvelous new springing. Both series are equipped with the "Positive Hand-Matic Gearshift", shown lower left. This removes the gear lever from the floor, locates control just under the wheel.

Announcement of Pontiac heralds two series instead of one for 1938. Known as the Pontiac De Luxe and Pontiac Special, these lines, now in production, reveal many interesting departures designed to maintain the Pontiac tradition for superior performance, ruggedness and beauty. The attractive new models will soon be displayed in dealers' showrooms across Canada.

The new Pontiac provides an impressive answer to a question asked by many motor car drivers. Why, these drivers have pondered, should there not be a change in gearshift styles so that we can control operations from steering wheel level?

This point has been carefully considered by General Motors engineers for some time in order that a practical and satisfactory solution might be offered. As a result, the 1938 models reveal the introduction of the "Positive Hand-Matic Gearshift," a feature of more than ordinary interest to the motoring public.

An inspection of this control shows that it takes the form of a newly designed lever located immediately below the steering wheel and projecting a few inches so that it is readily accessible to the right hand. This feature not only assures greater safety and simplicity of operation, but it offers the maximum of comfort and roominess as the front compartment is now completely clear of all obstructions. The advantages are obvious when three passengers are seated in the front. Still another feature which the observant motorist will note is that there is no possibility of grease leaking out of the transmission to soil clothing. At the same time, car drivers will experience an even greater ease in controlling the car by having both hands at wheel level at all times.

Engineers express confidence that this new gearshift will receive a cordial welcome from car drivers generally. As a matter of fact this feature, tested out in advance on enthusiasts, has been hailed with enthusiasm.

While located at the steering wheel level, this gearshift operates on the same principle as an ordinary gearshift. Discussing this point, one General Motors engineer explained that the lever on the steering wheel is connected by rod and cable to the transmission and can be moved up and down and forward and backward. "The level" he continued, "is in a neutral position when it is parallel to the bottom of the instrument panel. Low is upper rear; reverse, upper forward; second, lower forward and high, lower rear."

While basic design and general proportions which achieved widespread popularity last year have been retained, the Pontiac is replete with many detailed refinements which enhance the beauty of a graceful, flowing contour. In the Special Series there are three models—the five-passenger coach with trunk; the five-passenger sedan with trunk and the two-passenger business coupe.

The De Luxe series has the following—five-passenger coach with trunk; five-passenger sedan with trunk and a four-passenger sport coupe with opera seats. In addition to the new type of gearshift, the 1938 models offer many other interesting features including a safety release emergency brake lever; a tilting and adjustable front seat; safety roll over protection; a safety rope cord electric panel of the De Luxe models and a newly designed panel on the Special Series.

Engineers explain that the new brake prevents accidental release which might result in a car "running wild" after it has been parked. Pushing or pulling has no effect on this brake. The grip is designed so that the hand naturally takes the position necessary for its operation by exerting a little pressure or squeezing the grip or even pressing with the thumb. There is no necessity for "tugging" or using two hands to release this emergency brake which has been placed two inches closer to the front seat and is particularly convenient for women drivers.

The tilting and adjustable front seat is a feature of interest to the majority of drivers. It is controlled by very simple but extremely efficient mechanism. To operate it one has simply to allow the left hand to drop naturally. There is no bending or twisting of the body into awkward positions. As the seat travels forward the cushion automatically moves upward and the seat back tilts slightly forward, thus keeping the driver in full view of the highway. Motorists will agree that this is particularly important in the case of drivers of small stature. Attention is directed to the fact that the two halves of the front seats in the two-door models do not rub together eliminating the possibility of quick wear of fabric.

A clever combination of safety and beauty is revealed in the safety instrument panel introduced on the Pontiac De Luxe series. It will be noted that the panel itself is almost vertical and that the dials and indicators are easily visible to the driver at all times. Extending entirely across the panel at the lower edge is a half-round roll. Built into the centre of this roll are ignition switch, throttle and light controls finished in plastic knobs.

Displacing conventional steel robe, the safety robe cord, which is featured on sedan models is another step toward elimination of hazardous projections from the interior of the body. To design the safety roll on the back of the front seat, the height of the framework was cut down by approximately 4 1-2 inches and the top covered with a soft yielding surface. Thus if a passenger should be thrown forward unexpectedly there is little danger of injury.

A front axle with semi-elliptic spring is featured on the Special Series. At the same time, improved riding has been achieved by softening the front springs and balancing them with the rear springs, while there are also double-acting a r i p l a n e type hydraulic shock absorbers. Excessive deflection of the front springs due to heavy braking is prevented by a steel rubber covered bracket attached to the frame. The Pontiac De Luxe models are equipped with knee action. The Special Series has a 112 1-4 inch wheelbase and the De Luxe 117 inches.

All-steel construction and safety class right round the features already familiar to the motoring public. The mechanically-minded, however, will note a number of refinements in the overhead valve type six cylinder engine which retains all sound engineering principles of the past and gives Pontiac a reputation for lively road manners. The famous silver streak, Indian head in modern motif and a host of other features have achieved a new and distinguishing beauty as skilled craftsmen have combined their artistry to offer a car which will maintain Pontiac's traditions in 1938.

NEW YORK CURB (Canadian Press) Stocks Amer Gas Elec A 26 Amer Gas Elec B 14 Amer Super Power 14 Assoc Gas Elec A 25 Atlas Corp 25 Crede Pet 25 Can Marconi 25 Cities Serv 25 Elec Bond Sh 11 1/2 Ford Can A 9 1/2 Niagara 27 1/2 Un Light Pow Pfd 4 1/2 Gulf of Penn 4 1/2 Humboldt 65 Brown Pfd 65

Frederic A. Large BARRISTER, SOLICITOR, ATTORNEY, &c. 99 Great George Street Charlottetown, P. E. I. MONEY TO LOAN COLLECTIONS

McLeod & Bentley W. E. BENTLEY, K. C. J. A. BENTLEY, K. C. Barristers and Attorney-at-Law "ONEY TO LOAN"

MARQUETTE SECURITIES LIMITED NOTICE is hereby given that MARQUETTE SECURITIES LIMITED will make application to the Secretary of State under the provisions of The Companies Act, 1934, for acceptance of the surrender of its charter on and from a date to be fixed by the Secretary of State. DATED at Montreal this 22nd day of October, 1937. C. W. ISMAY, Secretary-Treasurer N-343-11-1-11

MONTECITO COMPANY, LIMITED, hereby gives notice under the provisions of the DOMINION COMPANIES' ACT, that it will make application to the Secretary of State of Canada under section 29 of the said Act, for acceptance of the surrender of its Charter on and from the date fixed by the Secretary of State. DATED at Charlottetown P. E. I. on this 26th day of October, 1937. BERNARD DEVLIN, Secretary

BIENVILLE SECURITIES LIMITED NOTICE is hereby given that BIENVILLE SECURITIES LIMITED will make application to the Secretary of State under the provisions of The Companies Act, 1934, for acceptance of the surrender of its charter on and from a date to be fixed by the Secretary of State. DATED at Montreal this 22nd day of October, 1937. C. W. ISMAY, Secretary-Treasurer N-343-11-1-11

MARQUETTE SECURITIES LIMITED NOTICE is hereby given that MARQUETTE SECURITIES LIMITED will make application to the Secretary of State under the provisions of The Companies Act, 1934, for acceptance of the surrender of its charter on and from a date to be fixed by the Secretary of State. DATED at Montreal this 22nd day of October, 1937. C. W. ISMAY, Secretary-Treasurer N-343-11-1-11

Professional Cards D. F. ARCHIBALD Chartered Accountant 140 Richmond Street Phone 47. P. O. Box 12.

McLeod & Bentley W. E. BENTLEY, K. C. J. A. BENTLEY, K. C. Barristers and Attorney-at-Law "ONEY TO LOAN"

MARITIME ADJUSTMENT BUREAU CREDIT - COLLECTIONS CREDIT REPORTS PERSONAL LOANS 9 Tweel Bldg. Charlottetown

M. ALBAN FARMER BARRISTER, SOLICITOR, ETC. MONEY TO LOAN Bank of Canada Bldg. Charlottetown

Alex. W. Matheson BARRISTER, SOLICITOR, ETC. Money to Loan Collection Office: 99 Great George Street

Advertising Rates—Payable in Advance

Central Guardian locals, 40 per word; Western and Eastern locals, 20 per word; Announcements and Commercials, 20 per word; Lists of Floral and Spiritual Offerings, Cards, etc., 40 per name; Letters of Condolence 70c per inch. Notices of Thanks and Appreciation, 70c per inch or 40 per word. Other rates on application. Minimum charge for any advertisement twenty-five cents.

For Sale

FOR SALE OR TRADE—1 CAR wheel farm wagon new, 1 sloop. Apply 314 Fitzroy Street. L-1206-10-29-31.

FOR SALE—ONE BLOOD MARE and foal, three young cattle, twelve fat pigs, 8 ton pressed straw. Apply E. Leonard, Cornwall. L-1259-10-30-31.

FOR SALE—CHRYSLER "4" Coupe \$125.00. Light and economical, would trade for larger car. Apply 238 Kent Street at noon or after 6 P. M. L-978-10-26-28-30-11-1-2.

Boards Wanted

WANTED—MALE BOARDERS, large heated room. Phone 1424.

BOARDS ACCOMMODATED. Reasonable rates. 33 Ouellet Street. L-1175-10-28-31.

LOST—TRUCK TIRE BETWEEN Montague and Carvell's, Charlottetown, No. 620. Finder please notify Edward McCarron, Montague. L-1228-10-29-31.

LOST—SUIT CASE BETWEEN Rustico and Charlottetown or in Charlottetown. Finder please leave at Guardian Office or Peters & Gallant, Rustico. Reward. L-1221-10-29-31.

LOST—A DIAMOND WRIST watch at golf links, between holes one and seven. Liberal reward. Finder leave with Dowling, Golf Club. L-1273.

WANTED CRANBERRIES

Paying 5 1-2c per lb. at our Warehouse, until Nov. 5th. Positively not later. CARVELL BROS., Fruit Dept. L-1217-10-29-4i

AUCTION SALE

One of the most desirable farm properties in Alexandra, approximately six miles from Charlottetown, containing 100 acres choice land, 80 under cultivation and 20 woodland, watered by spring and brook, fine residence, electric lights, etc., will be offered for sale at PUBLIC AUCTION on premises, Thursday, the 4th of November, at 2:00 P. M. All farm machinery and household effects will be sold separately on same day. For further particulars apply to owner, Alphonse MacKinnon on premises, or at the office of Bell & Matheson, Solicitors, Charlottetown. Terms at sale. J. A. MacDONALD, Auctioneer. Will be sold privately up to date of sale. L-1206-10-29-30-11-1-2.

Grain

WINNIPEG, Oct. 31—(CP)—Unfavorable crop reports from Argentina brought out short-covering in mixed trading on the Winnipeg grain exchange Saturday with prices closing 1-4 to 1-3-8 cents higher, October at \$1.23 1-4, November \$1.20 3-4, December \$1.17 5-8-3-4 and May \$1.15 3-4-7-8. Evening up operations at the end of the October cash month featured dealings with spasmodic buying flurries generally finding offerings light. October climbed 2-7-8 cents but eased to close one cent higher.

Weekend dullness was noted as far as export business in Canadian wheat was concerned. Cash wheat spreads generally eased. Only light offerings came out but demand was dull. Premiums above the cash month future, however, advanced. When November future replaced October at the close today, No. 1 and 2 northern were quoted at 18 and 12 cents higher, an advance of one cent.

Coarse grain trading was mostly local. Oats closed 1-2 lower to 3-4 higher; barley 1-8 to 3-8 lower, flax 4 cents lower to unchanged and rye 7 1-8 to 1 5-8 higher.

MARKETS AT A GLANCE

(By The Canadian Press) Toronto and Montreal—Stocks irregularly higher. New York—Stocks closed slightly lower. Winnipeg—Wheat 1-4 to 1 3-8 cents higher. New York—Cotton lower; coffee and rubber higher. New York—Canadian dollar down 1-64 to 1 00 1-64.

MONTREAL CURB

Table with columns: Stocks, Open, Close. Lists various stocks like Arno, Bouscald, Bownlee, etc.

AUCTION SALE I am authorized by Vincent J. Leonard to sell by auction on his premises at 1 o'clock, Wednesday, November 3rd, the following stock: Four choice milk cows, one steer, 2 1/2 years old, one steer 1 1/2 years old, six choice 2 year old shorthorn grade heifers, one draft mare 14 years old, on horse 12 years old. Terms cash. J. A. MacDONALD, Auctioneer. L-1269-10-30-11-1.

Grain

WINNIPEG, Oct. 31—(CP)—Unfavorable crop reports from Argentina brought out short-covering in mixed trading on the Winnipeg grain exchange Saturday with prices closing 1-4 to 1-3-8 cents higher, October at \$1.23 1-4, November \$1.20 3-4, December \$1.17 5-8-3-4 and May \$1.15 3-4-7-8. Evening up operations at the end of the October cash month featured dealings with spasmodic buying flurries generally finding offerings light. October climbed 2-7-8 cents but eased to close one cent higher.

Weekend dullness was noted as far as export business in Canadian wheat was concerned. Cash wheat spreads generally eased. Only light offerings came out but demand was dull. Premiums above the cash month future, however, advanced. When November future replaced October at the close today, No. 1 and 2 northern were quoted at 18 and 12 cents higher, an advance of one cent.

Coarse grain trading was mostly local. Oats closed 1-2 lower to 3-4 higher; barley 1-8 to 3-8 lower, flax 4 cents lower to unchanged and rye 7 1-8 to 1 5-8 higher.

MARKETS AT A GLANCE

(By The Canadian Press) Toronto and Montreal—Stocks irregularly higher. New York—Stocks closed slightly lower. Winnipeg—Wheat 1-4 to 1 3-8 cents higher. New York—Cotton lower; coffee and rubber higher. New York—Canadian dollar down 1-64 to 1 00 1-64.

MONTREAL CURB

Table with columns: Stocks, Open, Close. Lists various stocks like Arno, Bouscald, Bownlee, etc.

AUCTION SALE I am authorized by Vincent J. Leonard to sell by auction on his premises at 1 o'clock, Wednesday, November 3rd, the following stock: Four choice milk cows, one steer, 2 1/2 years old, one steer 1 1/2 years old, six choice 2 year old shorthorn grade heifers, one draft mare 14 years old, on horse 12 years old. Terms cash. J. A. MacDONALD, Auctioneer. L-1269-10-30-11-1.