

STOCK QUOTATIONS

N. Y. Stock Exchange

Montreal Stock Exchange

MINING

(Canadian Press)

Stocks	Close
Am C and F	28 1-4
Am Tel Tel	115 3-8
Anacosta	23
Baldwin Loco	16 3-4
Bendix Av	30 3-4
Boji Steel	19
Chrysler	80 1-2
Con Edison	25 3-4
Gen Elec	36
Gen Motors	34 3-4
Kennecott	31 1-4
Mont Ward	41 1-8
N Y Central	14 5-8
Nor Am Co	20 1-8
Paul Re Co	34 3-4
South Pacific	17
Std Oil N J	31 7-8
Texas Corp	34
United Air	39 1-4
U S Rubber	21
U S Steel	61 1-4
Vanadium Corp	33 7-8
West Elec	107
Woodworth	—

(Canadian Press)

Stocks	Close
Bell Tel	155 1-4
Brazilian	5 1-8
B C Power	26
Can Car Found	7 3-4
Can Ind Al A	180
Can Pacific	6
Celanese	30 1-2
Cons Smelt	39 3-4
Dom Bridge	27 1-2
Dom Steel B	9
Wom Steel B	9
Foundation Co	11
Gen Steel Ware	6 3-4
Imp Tob	14
Int Nickel	37 1-2
McCull Front	5 3-4
Mtl Power	29 1-8
Nat Brew	29 1-2
Nat Steel Car	43 1-2
Shawinigan	18 1-2
St Law Coin	—
Wpr Elec A	—
St Law Pfd	17
Wpr Elec B	—

(Canadian Press)

TORONTO, Oct. 19—

Stocks	Close
Aldermac	16
Ann Gold	1 1-4
Arnfield	6 1-2
Aunor Gold	203
Beattie	102
Bidgood	14 1-2
Bobjo	8 1-2
Broulan	77
Buff Ank	440
Cdn Mal	58
Cent Pat	196
Chesterville	115
Chromium	19
Cochenour	78
Coniarum	140
Cons Smelt	40
Davies	13
Denison	4
Dome Oil	23 1-2
Duquesne	6
East Mal	340
Fed Kirk	5
Gillies Lake	4 1-2
Gods Lake	36
Gold Eagle	7 1-8
Gold Gate	12 1-2
Graham Bou	1 3-4
Gunnar Gold	41 1-2
Hallnor	550
Hard Rock	109
Howe	28
Insp M D	28
Int Nickel	37 7-8
Jack Wal	34
Kerr Add	315
Kirk Lake	100
Lake Shore	22 1-2
Lamaque	490
Lapa Cad	9
Leitch	55
Little L L	229
Macassa	350
MacLeod	250
Madsen	50
Malartic	110
McIntyre	53
McVittie	8 1-4
McWatters	31
Min Corp	80
Moneta	60
Morris K	3 1-8
Murphy	2
Naybo	25 1-2
Nipissing	105
Noranda	57 1-2
Omega	18 1-4
Perron Gold	175
Pick Crow	300
Pioneer	225
Powell	110
Prairie Roy	9
Premier	98
Preston	277
San Ant	225
Senator	34
Sherritt	80
Silver D	4
Siscoe	58
Sladen	50
Steep Rock	146
Straw Lake	4 1-2
Sud Cont	4 1-2
Sylvanite	250
Teck Hugh	315
Upper Can	144
Ventures	273
Vermilata	5
Wendigo	25 1-2
Wrt Harg	630

Market At A Glance

(By The Canadian Press)

Toronto—Mining and western oil shares higher; industrials slightly lower.

Montreal—Papers lower; other industrials unchanged; golds higher.

New York—Stocks closed slightly lower.

Winnipeg—Wheat 1-4-cent higher to unchanged.

MONTREAL, Oct. 20—(CP)—Traders failed to show much interest in Saturday's three-hour stock market session and the 1st was practically even at the close.

Consolidated Smelters, added 3-4 while Nickel gained 1-4. Desco and International Petroleum backed up 3-8 each.

B.C. Power A sold off 1-2 and Shawinigan tacked on 1-4.

Canadian Celanese closed off 1-2 but Canada Cement preferred sported an advance of a similar amount. Dominion Coal preferred advanced the minimum amount.

Montreal Curb

(Canadian Press)

Stocks	Close
Abitibi Com	75
Abitibi Pfd	5
Asbestos	15 1-2
Beauharnois	5 1-2
Can Vickers	3 1-4
Don A	27 1-2
Ford A	17
Imp Oil	11
Int Pece	15 3-8
Price Com	—
Price Pfd	—

GRAIN

WINNIPEG, Oct. 20—(CP)—Purchases by southern houses for United States mills appeared to be the only activity on the wheat market of Winnipeg grain exchange Saturday.

Quotations closed 1-4 higher to unchanged October 1-2; December 3-8; May 7-8. Buenos Aires was 1-8 higher.

Advertising Rates Payable in Advance

Minimum Charge for Any Advertisements 25 Cents

Central Guardian locals, 50 per word; Western and Eastern locals 30 per word; Announcements and Coming Events 30 per word; Classified 30 per word; In Memoriam Notices 70c per inch; Lists of Floral and Spiritual Offerings, Cards, etc., 50c per name; Letters of Condolence 70c per inch; Wedding engagements 40 words for \$1.00 and 10 cents for every additional 3 words. Notices of Thanks and Appreciation, 70c per inch or 40c per word. Lists of Subscriptions, 50c per inch. Address and Presentation \$1.00. Other rates on application.

Boarders Wanted

BOARDERS ACCOMMODATED, 250 Grafton St. L-547-10-19-21.

PERMANENT BOARDERS WANTED, Apply 234 Hillsboro St. L-564-10-19-41.

Male Help Wanted

WANTED — MAN FOR FARM work. Middle aged preferred. House provided. W. R. Dennis, L-540-10-19-21.

WANTED — MAN FOR FARM work. W. Wheatley, Royalty, L-540-10-19-21.

Wanted

WANTED TWO OR THREE rooms, light housekeeping, phone 224. L-574-10-19-31

To Let

TO LET—HEATED TENEMENT. Centrally located. Apply 265 Grafton St. L-514-10-18-31.

Professional Cards

MORRELL & CO.
D. F. ARCHIBALD
Chartered Accountants
Eastern Trust Building
Charlottetown

McLEOD & BENTLEY
W. E. BENTLEY K.C.
J. A. BENTLEY K.C.
C. F. BENTLEY, LL.B.
Barristers and Attorneys-at-Law
MONEY TO LOAN
180 Richmond Street

M. ALBAN FARMER
B.A., LL.B.
BARRISTER, SOLICITOR, ETC.
Canadian Bank of Commerce Bldg.
MONEY TO LOAN

ALEX W. MATHESON
BARRISTER, SOLICITOR, ETC.
Money to Loan Collections
Office: 90 Great George St.

EYES EXAMINED
and
GLASSES FITTED
J. S. TAYLOR
OPTOMETRIST
Office Hours 9-12 — 2-5.30
Evenings By Appointment
New Location
Cor. Kent and Queen Sts.
Opposite Ris's Grocery

Female Help Wanted

MAID WANTED. APPLY GUARDIAN Office. L-500-10-18-31.

WANTED GIRL FOR GENERAL housework. Country girl, with experience preferred. Apply A.B.C. Guardian. L-512-10-18-31.

EXPERIENCED MAID FAMILY of two. City references. Write "J. K." Guardian. L-584-10-21-21.

EXPERIENCED MAID WANTED. Apply 23 North River Road or phone 1493. L-575-10-19-21.

For Sale

FOR SALE OR EXCHANGE—GUY Kalmuck for a heavier horse. E. M. Cudmore, Oyster Bed Bridge. L-563-10-19-31.

HORSE FOR SALE — GOOD GENERAL purpose horse. Apply or phone Charlottetown Riding Club. L-554-10-19-41.

FOR SALE — NEW BUNGALOW. All modern conveniences. Apply 10 Felling Street. L-243-9-16-41.

FOR SALE — 1939 FORD LIGHT Delivery thoroughly conditioned, \$575. A. Horne & Co. L-592-10-21-11.

FOR SALE—SPECIAL BARGAINS in used trucks—priced low—A. Horne & Co. L-592-10-21-11.

FOR SALE — ONE DRIVING mare four years old, also thrashing drum Halls in good repair Wm. Halliwell, Springton. L-498-10-17-11.

Miscellaneous

CAR LEAVING FOR OTTAWA Tuesday, Oct. 22. Accommodation for three passengers. Phone 1490-L. L-580-10-19-21.

Agents Wanted

IF YOU ARE UNEMPLOYED AT present—why not become a Jito Dealer? Easy and profitable work. Sell two hundred necessities including Tea, Coffee in exclusive district. Thirty day trial without risk. Interesting Specials for consumers. Inquire at Jito, 1435 Montcalm, Montreal.

Are You the Man?

WATKINS DEALER (BETWEEN 25 and 35 years, with car), needed immediately in nearby Rural Route to supply established demand for Everyday Necessities, including Spices, Extracts, Baking Powder, Toilet Preparations, Cleaners, Medicines, Fly Spray, Mineralized Stock, Hog and Poultry Tonics. 72 year reputation, 10,000 Dealers. Must be satisfied with a reasonable income at start. Farm experience helpful. Selling experience unnecessary. Credit furnished right parties. Write immediately. The J. R. Watkins Company, Montreal, Que. Dept. Z-C-1A N-775-10-17-14-21.

Help Wanted

WANTED AT ONCE MARRIED couple for farm work. Apply in person. Preston Rodd, Harrington. L-581-10-19-21.

NOTICE

We are now mailing out our accounts. Payment of same is requested forthwith.

Credit in 1941 will be extended only to those who have made full settlement on or before December 31, 1940. Established 30 day accounts will be carried as usual and given the benefit of cash prices, but reasonably complete settlement must be made at the beginning of each month.

HENRY DUNN, Gaspereaux. L-492-10-18-21-23.

NOTICE

The Annual Convention —of the—

FISHERMEN'S UNION OF PRINCE EDWARD ISLAND

will be held in the

TOWN HALL, Summerside

TUESDAY, OCT. 22

Exercises commence at 10 a.m. sharp

WILFRED McCARVILL, Secretary

FOR SALE

Desirable property on Spring Park Road, Charlottetown, for immediate sale. This property has modern dwelling, large barn and an acre of well cultivated land.

Apply to

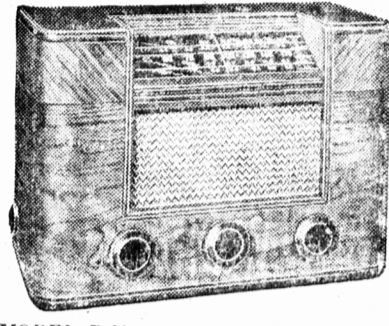
M. A. FARMER, Solicitor, Canadian Bank of Commerce Building

L-276-10-11-61

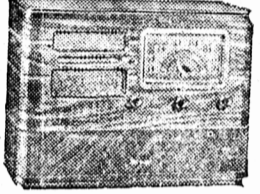


WITH **RCA Victor**
"HOLMAN'S BRING THE WORLD TO YOUR FIRESIDE"

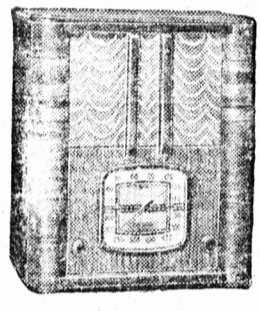
THE NEW 1941 RCA VICTOR BATTERY SAVER RADIO BRINGS A FINER WORLD OF ENTERTAINMENT INTO YOUR HOME! AND AT HOLMAN'S YOU'LL FIND A MODEL TO SUIT EVERY PURSE AND TASTE!



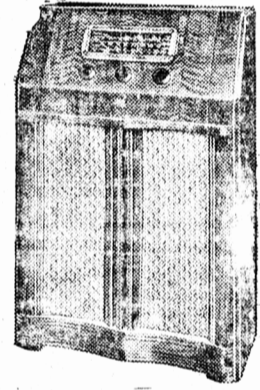
MODEL B-61
A smartly styled battery table set with new type Band Spread Overseas Dial, set at convenient angle for full vision tuning, makes short wave tuning easy, low drain tubes, plug-in connection for Record Player, beautiful walnut cabinet. Complete with batteries — \$69.85



MODEL B-60
Quickly convertible to an all-electric radio when electricity comes to your home. Simply replace batteries with a low cost power unit which plugs into your light socket. Tuning range 510 to 1720 kes. Automatic control of volume, safety on-and-off indicator saves batteries... plug-in connection for Record Player. Low drain 1.4 volt tubes. Complete — \$49.85



MODEL B-62
An outstanding value because of low battery drain, superb tone and quality, distance booster for increased sensitivity, exquisitely finished table style cabinet, new easy-to-read dial. Complete with batteries — \$34.85



MODEL B-7
A new short and long wave Battery Console set with Band Spread Overseas Dial, short wave as easy to tune as local, improved continuous tone control, automatic volume control, uses 1 1-2 volt "A" battery and 1.4 volt tubes for low drain and economical operation, smartly styled cabinet of heart walnut veneers, 37-3/16 inches high. Complete with batteries — \$34.85

EASY TERMS

See The NEW **RCA Victor** Battery Saver RADIOS At

HOLMAN'S 2 BIG STORES
SUMMERSIDE & CHARLOTTETOWN

SEES NEW FIELDS OPENING TO WOMEN
WASHINGTON, Oct. 17 —(CP)—Mary Anderson, director of the

Women's Bureau in the United States Labor Department, predicts that the national defence program will alter the industrial status of women.

When the United States built up the ramparts in the First Great War period, Mrs. Anderson said, "Women bobbed their hair, invaded industry — and stayed there."

"The present United States defence program will open new fields to women. And they are already wearing slacks. It may be after this world upset there will be women heading engineering firms building bridges, skyscrapers."

Chile is speeding up its public works program.



Private B. Rance, on the permanent staff of No. 20 Infantry Training School at Frontville, is too skilful a writer for his own good. He found that even when he posted a Charlie Chaplin mustache on his upper lip, found an incontinent restroom before an audience of 100 soldiers; began to harangue them in his most impassioned English manner (LEFT). The act went over big—too big. Catching the spirit of the thing, the boys gave the institution Hitler a rough idea of how they would treat the real Nazi article if they ever came to close quarters. They picked up Pte. Rance and deposited him nose to the ground in the nearest mud puddle (RIGHT).

Chile is speeding up its public works program.