

"Eat and Be Merry!"

Stop starving yourself—stop suffering the pangs of indigestion—stop worrying about what you dare and dare not eat. Eat hearty meals of wholesome food, take

MA-DRU-CO DYSPEPSIA TABLETS

and you'll feel like a new person. Sour stomach—heartburn—occasional indigestion—chronic dyspepsia—all yield quickly to MA-DRU-CO Dyspepsia Tablets. The properly digested food restores your strength, your stomach regains its tone, and soon requires no further aid.

50c. a box. If your druggist has not stocked them yet send 50c. and we will mail them.

NATIONAL DRUG AND CHEMICAL CO. OF CANADA LIMITED, MONTREAL.

BLUESTONE

For the prevention of Smut in your grain and Scab on your potatoes use BLUESTONE. You can buy it pulverized 9c per pound from

Stanley Shaw & Peardon

Charlottetown

4-29dtf.

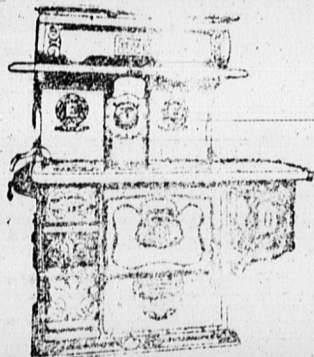
Ask for LYNCHS' When You Want the best Biscuits

Lynchs' marked-on biscuits means all that you could ask for in quality, and at a price you would like to pay. Lynchs' biscuits are made of superior ingredients in one of Canada's cleanest kitchens. They are sold in bulk by your grocer—you get full weight in every pound and don't have to pay for cheap paper and boxes.

Lynchs' fill the want left vacant by other biscuits. They are wholesome, dainty, pure and delicious. Your grocer sells Lynchs' ask him about them.

Lynchs' Ltd Sydney, N S

Inspect the Enterprise Monarch



The Enterprise Monarch steel range is one that appeals to all practical and home loving housewives. Its appearance speaks for itself,

it is one of the best constructed ranges in America. The Enterprise is fully guaranteed to be perfect in fit, finish and operation. In modern improvements and exclusive patented features it leads all others. It is a range that combines beauty and durability, a necessary ornament in every kitchen, a perfect baker.

See our local dealers or write for free illustrated circulars. Enterprise Foundry Co., Manufacturers Sackville, N B

SWIFT'S ANIMAL FERTILIZERS

We have just received our Stock of the above well known Fertilizers, in the following brands:

- EMERSON BRAND BONE FERTILIZER For Grain
POTATO MANURE For Potatoes
POTATO PHOSPHATE For Potatoes
GROUND BONE For Grass
ANIMAL BRAND For all Crops

AND Nitrate of Soda, Muriate of Potash, English Superphosphates

ALSO

Haszard's Improved Turnip Seed, Mammoth and Dignity Mangel seed, Longfellow Corn, Clover Timothy, Peas, Vetches, Wheat, Barley, Buckwheat and Oats, all of which we are selling at LOWEST PRICES.

If in need of Timothy and Clover, call early as our stock is getting low.

A. HORNE & CO.

4-29dtf.

SUMMERSIDE, ALBERTON AND PRINCE COUNTY

—It pays to buy in this Province. —Attention is drawn to David Enman's ad. re for sale which appears in this issue.

—The City of Ghent arrived in Summerside about 6.30 Saturday evening on her first trip of the season. She had a large inward cargo. She left Monday morning on return to Halifax, taking from Summerside about 1800 bags oats and potatoes, 300 cases cans and a large quantity of sundries.—S.

—The Cascapedia from Montreal arrived in Summerside yesterday. Among the passengers on board were J. T. Brock, agent at Montreal, and J. R. Strang, accountant of the Quebec S. S. Company, who are making a visit to the different ports of call in the interest of the company's freight business.—S.

UNVEILING OF GREAT NATIONAL MEMORIAL

(Continued from page 1) Drury Lane theater.

Tomorrow the emperor and empress will land at Port Victoria and proceed to London, where they will be greeted by King George and Queen Mary and other members of the royal family and escorted to open carriage to Buckingham palace, where they will be the guests of the king and queen. That evening there will be a family dinner at the palace.

The unveiling of the statue will take place on Tuesday morning. The ceremony will not only be a picture-que military parade, but religious service in which the choir of Westminster Abbey, St. Paul's cathedral and the Chapels Royal will have a share. On the stand with the king and queen and the emperor and empress and Queen Alexandra will be many members of royal families, all, however, related to the royal family of England or representing relatives.

Among them will be the King and Queen of Norway, the Crown Prince and Crown Princess of Sweden, the Duke and Duchess of Connaught, and Prince Arthur of Connaught; Princess Henry of Battenburg, and her sons; Prince and Princess Christian; Princess Louise, Duchess of Argyll; the Duchess of Albany; the Duke and Duchess of Saxo-Coburg-Gotha; the Duke and Duchess of Teck, and all the other members of the royal family. The Grand Duke Alexander Michailovitch will represent the Czar and Czarina. All the dominion premiers, who have arrived for the imperial conference will also be present.

The national memorial which the statue crowns and completes, is surrounded by a circular space. It stands directly in front of the palace, the queen facing down the Mall. Around this space are piers surmounted with emblematical figures, symbolizing the chief possessions of the empire. In the center is the memorial proper, a stately monument of marble and bronze, which it has taken nine years to complete, at a cost of upwards of \$1,700,000. On two sides are great fountains. Pedestals flank the broad flights of steps, surmounted by the lion and bronze groups representing peace, progress, manufactures and agriculture. Over the fountains are colossal figures representing brain and intelligence. From the center of the granite platform rises a huge column, around which the chief statues and groups are placed.

At the base are seen four ships' prows—two bearing trophies of the army and navy and two fruit and flowers, emblematical of commerce and prosperity. The marble statue of Queen Victoria, by Thomas Brock, is eighteen and a half feet in height, and depicts the Queen dressed in robes of state, sitting enthroned, with orb and scepter. In similar position, on other sides of the column, are groups of figures. That looking towards Buckingham Palace represents the British Empire.

At the base are seen four ships' prows—two bearing trophies of the army and navy and two fruit and flowers, emblematical of commerce and prosperity. The marble statue of Queen Victoria, by Thomas Brock, is eighteen and a half feet in height, and depicts the Queen dressed in robes of state, sitting enthroned, with orb and scepter. In similar position, on other sides of the column, are groups of figures. That looking towards Buckingham Palace represents the British Empire.

STRENGTH COUNTS BEECHAM'S PILLS

Sold Everywhere. In boxes 25c.

MEL SHEPPARD TO SCOTLAND

NEW YORK, May 9.—Melvin Sheppard, America's greatest middle distance runner, is going abroad this summer. He stated that he would leave the early part of July. While abroad he will compete in three classic meets in Scotland—the Celtic's, the Rangers' and the Ayrshire games.

"While in Scotland after the last Olympic games I promised the managers of these associations that I would return before I quit the game and compete at their meets," said Sheppard. "Since then business has prevented me from making the trip. This year my vacation comes in July, and as these games will be held that month I intend to make good my promise and run there."

"There is only one thing that I know of which will prevent me from sailing. That is lack of condition. If I am not in my best shape I shall stay at home. I have already begun outdoor practice. I am going along slowly in my training and expect to be able to reach by best form by the latter part of next month. "If my suggestions are adopted by the officials on the other side, I will compete in three races at classic distance—quarter mile, half mile and one mile. I am anxious to add those records to my credit, and if hard training will enable me to do it you will see me return with them annexed to my list."

—The Morning Daily Guardian can be obtained at Laflerty's Tonsorial Parlors, Summerside. 12-16rtf.

—All news, advertising and subscriptions in Alberton and vicinity should be handed to H. Clark, Agent 1-25dtf.

—Don't forget the auction sale of 2 houses and a barn on the corner of Granville and Cambridge streets. Sale takes place tomorrow at 12 o'clock, noon.

—Brace, McKay & Co., Summerside, the "Perfect" Bicycle Agents, are selling Dunlop Shells at \$2.50 each. Ask for their complete cash price-list. 5-15dmthrt3w.

—\$2.00 postage paid, for the best Battery Tester made. Different and better than ordinary and guaranteed accurate at Brace, McKay & Co.'s, Summerside. 5-34dmwrt2w.

—Brace, McKay & Co., Summerside, have received an exceptionally large shipment of lawn mowers, screen doors and windows and screen wire and they can positively save you money, besides giving splendid selections. 5-15dmthrt3w.

—All advertising in Summerside and vicinity for The Morning Daily and Evening Daily as well as all new and renewal subscriptions should be handed to Miss Amy G. Burrows, agent, Summer Street. All news should be given to J. F. Laflerty, Guardian Correspondent, Water Street. 1-25dtf.

Ingham Palace represents motherhood, that to the north justice and that to the south truth. On the cornice of the upper pedestal, which rises above the figures, stand eagles with outstretched wings representing dominion. The whole is surmounted by a 12-foot statue of Victoria made of gilded bronze, with statues of Courage and Constancy on either side.

Some significance may be attached to the state banquet to be given in honor of the German Emperor next Thursday evening. Besides the members of the royal family, Sir Edward Grey, the German ambassador and possibly other diplomats will be present.

Thursday there will be a reception at the German embassy, and in the evening there will be the gala performance of "Money" at Drury Lane theater. For this elaborate preparation are being made. The performance will lack nothing in picturesqueness and the scenery and costumes have been so carefully considered and prepared that each scene will be a veritable living picture of a bygone period. The scenery will be of the Adam period, all made of solid materials instead of the usual painted canvas, while the actors will wear corsets in order to give the correct figure of the age. In the club scene the performance will include nearly every actor manager in London.

On May 18th, the emperor and empress will go to the Windsor to lay wreaths on the graves of Queen Victoria at Frogmore and King Edward in St. George's chapel. The state ball on Friday will be one of the most brilliant gatherings of the year. The next day the royal visitors will depart from England.

A TORONTO BANK WAS VICTIMIZED

VANCOUVER, B. C., May 11.—Clever check artist juggling with the name of Wm. Braid and Co., wholesale coffee merchants of this city, has just victimized a bank in Toronto to the extent of \$2,537.

The discovery was made when one of the checks for \$845 was returned to the Vancouver branch of the Bank of Nova Scotia. It did not take long for the bank officials to realize that a forger had been at work. Braid and Co. bank with the Canadian Bank of Commerce, and the check in question was made payable at the Bank of Nova Scotia. Yesterday two other checks, one for \$847 and the other for \$845, drawn on the same bank, reached here from Toronto, where, like the first one, they had been cashed. Any day may bring forth another bunch of checks.

PRESBYTERIAN SYNOD

VANCOUVER, May 6.—The great interest of yesterday's session of the synod of the Presbyterian church in British Columbia, centered on the report of the committee constituted to deal with the question of the recent "Ne Temere" decree, the report of the committee on Westminster Hall. The committee dealing with the "Ne Temere" decree brought in the following resolution, which was adopted: Whereas, the present status of the marriage law in the province of Quebec in some cases works a great injustice, and imposes a stigma upon innocent parties, involving grievous civil disabilities, we therefore humbly overture the venerable assembly, after careful study of the whole question, as seems to it wisest, to secure that such marriages as are already entered into shall be declared valid, and so to secure equal treatment in the eyes of the law for all citizens of Canada.

Don't Persecute your Bowels

Cut out cathartics and purgatives. They are brutal—harsh—unnecessary. Try CARTER'S LITTLE LIVER PILLS. Purely vegetable. Act gently on the liver, eliminate bile, and soothe the delicate membrane of the bowels. Cure Constipation, Biliousness, Sick Headache and Indigestion, as millions know. Small Pill, Small Dose, Small Price. Genuine must bear Signature.

PROWSE BROS | Prices the Same to all, | PROWSE BROS | Strictly Cash to Everybody | Something More than Weather Makes the Season's Styles. About Nobby Caps We have all the leading English and American styles. Every man and boy needs a cap for knock about wear. And we can furnish every one of them with just what they require. Prices 25c 35c 50c 75c \$1.00. The derby you wore with your overcoat is a very different hat when worn with a sack suit. The brim's too heavy—crown's too high—see if this isn't right. Suppose you drop in and see OUR HATS. They are designed to fit the lines of the lighter clothing with which they are worn—Spring is here—Summer is coming—get a hat to suit the Season. English Hats Christy's London in hard and soft Felts \$1.00 to \$5.00 Hawes Von Gal, \$3.00. The Carpet Store Get out of the Rut of Sameness. Buy Your Carpets here Entrance 95 Queen Street. e Bros Ltd. | The Store of Satisfaction | Prowse Bros Ltd

TUCKETT'S Cigarettes. WITH your cafe noir, include a Tuckett's Turkish Cigarette. Its fine mellow taste blends delightfully with the full, firm flavor of the coffee, and provides a pleasurable finality to the meal. Fastidious diners will appreciate the high grade quality of these carefully selected leaf used in these cigarettes. Tuckett's Special Turkish Cigarettes... 15c. for 10 Tuckett's Club Virginia Cigarettes... 15c. for 10 Tuckett's T. & B. Cigarettes... 10c. for 10 TUCKETT LIMITED HAMILTON

Crown Prince. The popular CROWN PRINCE sires a horse today in great variety. We are showing all the new styles in close set fold collars with either square or round collar. These come in quarter sizes and the price is 20c each. 3 for 50c. GUESS COLLARS not only fit and wear but they possess all the style that skillful cutters and expert finishers can put into a collar. There is no collar as smartly stylish as the GUESS COLLARS. There is a style to suit every need and every taste and we have the style that will suit you 20c each 3 for 50 Moore & McLeod 4-24dtf. Draperies, Beer & Weeks 5-3dtf. LARGE SUPPLEMENTARY import of middle of May millinery just in for those ladies who have not yet found what they wanted in a nice shape. The output in this department has been tripled. We have opened over 27 packages of European goods from across the water within the last week or two. The store that keeps their stock replenished.—PATONS. 5-11dtf. Beddings at Beer & Weeks 5-3dtf. Beer & Weeks—Furniture 5-3dtf.

WHY the "Gold Bond Shoe" is a long-wearing investment—Expert shoe-making and choicest material. We have just received our first shipment of HENEY Harness, in Nickel, Solid Nickel, Swedge, Brass, Orloide and Genuine Rubber Mountings; all the latest styles in Flexible, Strap and Track Saddles all of which we are selling at lowest prices.—A. HORNE, & Co. 5-4dr10l. \$4.00 4.50 5.00 Morris & Smith.