

Watch This
Page
Thursday, May
15th.
?

More
Horsepower

When we stop to think of the almost innumerable purposes for which electricity is today being used, we can hardly wonder that the demand for electrical power is increasing at the rate of about 20% a year. In other words the demand for electricity is increasing far more rapidly than the population.

The business of public utility companies may be said to be as permanent as the population that they serve. The safety of well chosen public utility bonds is based on an absolute necessity.

We will shortly offer a 6% First Mortgage Public Utility Bond suitable for the purposes of most conservative investment.

Eastern Securities Company
LIMITED

W. H. V. DUNBAR, Manager.
CHARLOTTETOWN

ST. JOHN MONTREAL HALIFAX
MONCTON SUMMERSIDE FREDERICTON

3742-5-13-31.

The "Besco"
Reorganization

OUR May Market Letter tells how the reorganization plan of the British Empire Steel Corporation works out.

It describes at length how the various interlocking interests of the corporation have been simplified, and explains the corporate structure of the new operating and holding company, Dominion Steel and Coal Corporation.

A copy will be sent on request.

JOHNSTON AND WARD

B. ROGERS, JR., Manager.
MacArthur Bldg., Sumner St., Summerside, P. O. Box 359.
Please place my name on your list to receive your Market Letter regularly.
Name.....
Address.....

Stewart Jones & Co.

Correspondents of
Greenshields & Co.
Members of the Montreal Stock Exchange
88 Great George St., Charlottetown

MONTREAL STOCK EXCHANGE

Market reports furnished by Greenshields & Co., Montreal, to Stewart Jones & Co., 88 Great George St., Charlottetown.
Quoted at closing, May 12, 1930.

MONTREAL

Abitibi	31 1/2
Alberta Pacific Grain	18 1/2
Asbestos	1 1/2
Brazilian	50 1/2
D. A. Oil	36 1/2
B. C. Power	42
Building Products	24

Associated Gas and Electric Company

The Board of Directors has declared the following quarterly dividends payable June 2, 1930, to holders of record April 15, 1930:
Dividend No. 21
25 Dividend Series Preferred Stock—\$1.00 per share.
Dividend No. 18
25.00 Dividend Series Preferred Stock—\$1.00 per share.
Dividend No. 7
25 Dividend Series Preferred Stock—\$1.25 per share, payable June 16, 1930, to holders of record May 15, 1930.
M. G. O'KEEFE, Secretary.

Canada Car	24 1/2
Canada Cement	18
Canada Power and Paper	15 1/2
Canada Brewery	8 1/2
Dominion Bridge	62 1/2
Foreign Power Securities	30
Fraser Company	14 1/2
General Steel Wares	10 1/2
Home Oil	6.60
Imperial Oil	25 1/2
Industrial Alcohol	7 1/2
International Nickel	34 1/2
International Petroleum	25 1/2
Massey Harris	33 1/2
Montreal Power	127 1/2
McCull Frontenac	25 1/2
National Breweries	31 1/2
National Steel Car	64 1/2
Canada Bronze	47
Canada Maltine	20 1/2
Dominion Tar	20
Famous Players	54 1/2
Noranda	29
Power Corporation	63 1/2
Price Bros.	78
Quebec Power	63 1/2
Shawinigan	75 1/2
Smelters	21 1/2
Steel of Canada	43
Steel of Canada Pfd	39 1/2

Central Guardian

TENNIS DANCE, CASINO, May 16th. 3896-5-9-41.

FREE WITH TWO PACKAGES
Fancy Family Cake and Pastry Flour, one large glass mixing bowl. Free. Ask your grocer. Get yours while they last. 3574-5-6-1 week.

SUCCESSFUL STUDENT—The following is the correct standing of Mr. R. R. Hogg, Charlottetown, in the recent Dalhousie University exams: Arts and Science, fourth year, French 2; English 2; Latin 2; History 1, (distinction); Chemistry, 1; Mathematics 1.

ISLAND GRADUATE—Among the young graduates who received their pins and diplomas at the North Adams Hospital, North Adams, Mass., last evening, was Miss Ruby May Rogers, daughter of Mr. and Mrs. A. L. Rogers, Kensington.

INJURIES FATAL—Elton C. Nesbit, of Richmond, P. E. I., died in a hospital at Portland, Maine, May 8th from injuries received when he was struck by an automobile while stepping from an electric car. He had come here from New York to visit his brother. The body was sent to Richmond, where relatives live.

PERSONALS

Many friends will regret to hear that Miss Grace Drake, of St. Peters Harbour, has entered the P. E. I. Hospital for treatment.

Mrs. Harold Bishop, of Cavendish, P. E. I., who has been the guest of Mrs. Edward Lawson, Birch street, while attending the meetings of the Women's Missionary Society, has returned to her home.—Moncton Transcript.

Smons 30
Winnipeg Electric 43 1/2

NEW YORK

American Can	140 1/2
Allegheny	26 1/2
Anaconda	62 1/2
Bendix Aviation	42 1/2
Consolidated Gas	126 1/2
Dominion Stores	24 1/2
Electric Power and Light	88
International Hydro Elec.	47 1/2
International Harvester	104 1/2
Kennecott Copper	48 1/2
General Asphalt	56
Montgomery Ward	42 1/2
Niagara Hudson Power	21 1/2
Paramount Players	68 1/2
Poor & Co. B.	51
Penick & Ford	51
Radio	49
Standard Oil of New Jersey	81 1/2
Sterling Securities	76 1/2
Sears Roebuck	17
Studebaker	37 1/2
Yellow Truck	28
Commercial Solvent	31 1/2

NEW YORK

C. P. R.	206
General Motors	48 1/2
U. S. Steel	171 1/2
Bank of Nova Scotia	323
Bank of Montreal	305
Bank of Commerce	255
Royal Bank	300



USE
RAMSAY'S
PAINT

A little "good" paint works wonders—it transforms ugliness into beauty and provides the finest and cheapest insurance to the surface against decay.

Ramsay's Paint has been used for preserving and beautifying Canadian property for nearly one hundred years and during this time has won an enviable reputation for itself.



For Sale by
Stanley, Shaw & Peardon

Gleanings From
Tryon And Vicinity

Did you never hear tell of the spider that tried up the wall hard to climb. If not, first take that for a guide—you'll find it will serve you in time; Nine times it tried hard to be mounting, and every time it stuck fast. But it tried hard again without counting, and, of course, it succeeded at last.

Miss Pearl Weeks, Principal of Tryon Consolidated School, spent last week-end the guest of Mr. and Mrs. Hermas Myers, of Carleton, P. E. I.

Mr. and Mrs. Stewart MacMicken and son, Arthur, of Carleton, P. E. I., were Sunday visitors to Tryon.

On Friday evening of last week about forty of the young people of the "Utopian" Society motored to Bedeque where they were interested listeners to the debate, "Resolved that the Maritimes are more essential to the rest of Canada, than the rest of Canada is to the Maritimes," which was held in the Hall between the Bedeque debating team (Pro.) Heckler Leard, Miss M. Robertson and Arnold Henderson, and the Freetown Debating team (Con.) Louis Cairns, Miss Drummond and Mr. Proffitt. Both sides are to be congratulated on the splendid way they delivered their speeches etc. Bedeque was successful in winning the debate, and let us hope that this worthy team may have more successes, as we feel sure they will have, when they meet other teams which have entered the inter-country debate.

Mr. Harrison R. Bell and Miss Lulla Robinson of Summerside, P. E. I., motored to Tryon on Sunday.

Many of our local residents are sporting new cars these fine, spring days, and are apparently enjoying them, if the clouds of dust, which are blown in on those of us, who are unfortunate enough to live within a stone's throw of the roads, are any indication of enjoyment. Mr. Charles Harvey of Craqueud recently purchased a fine new Ford coach, also Mr. Elmer Dawson of Augustine Cove an Oldsmobile Sedan, Landau Special.

Beat this who can? Out of a family of thirteen children of the late Mr. and Mrs. John Inman, all of whom lived over their allotted time, the following five have attained remarkable ages for one family: Mrs. Harrington, Nine Mile Creek, aged 90; Mrs. Henry Inman, Victoria, aged 88; Mrs. Joseph Sturdy, Victoria, aged 86; Mrs. Dan Farrow, Hampton, aged 84; and John Inman, Hampton aged 83.

Mr. and Mrs. Samuel Gillis and infant daughter, Gladys of Rose Valley, P. E. I. Island were recent motorists to Tryon.

The fine and warm sunshiny days, have dried upon the ground wonderfully and the farmers are busily engaged on the land, ploughing, discing and harrowing. The roads in this vicinity are also in splendid condition and the cars and trucks are surely taking advantage of them.

Messrs. Bowley Leard and Spurgeon Clarke of Tryon motored to Charlottetown last week on business.

Miss Dora Trowsdale accompanied by Miss Maude Oakes of Westmoreland made a business trip to Tryon on Thursday.

Mr. Johnny Mathieson of Inkerman, was a flying visitor to Tryon on Tuesday.

Mr. and Mrs. Spurgeon Clarke of Tryon, accompanied by Miss Pearl Weeks were visitors to the Western capital on Thursday.

School is now closed down as there are several cases of scarletina among the children of the vicinity. None of those are reported serious, but it seems wisest to take preventative measures.

"Dad" Lyman of Tryon now has his Ice Cream Parlor open for business.

Messrs. Freddy Watton and "Bill" Lea of the staff of R. T. Holman's, Ltd., Summerside spent the week-end with relative in Tryon.

Ends Piles Quick

No Salves or Cutting
Piles are caused by congestion of blood in the lower bowel. Only an internal medicine can remove the cause. That's why salves and cutting fail. HEM-ROID, the prescription of Dr. J. S. Leonard, removes this congestion and strengthens the affected parts.
HEM-ROID is now sold by druggists everywhere, and has such a wonderful record of success even in chronic and stubborn cases that—A—invites every Pile sufferer to try HEM-ROID and guarantee money-back if it does not end all Pile mis-

COUGH
INSURANCE

A GOOD BUSINESS MAN insures his stock against fire. The prudent head of a family has his life insured. The thoughtful traveler carries accident insurance.

NYALS PINOL is insurance against Coughs, Colds, Bronchitis, Croup, La Grippe, all kinds of throat and lung ailments. It is the cheapest insurance anybody can carry. Keep fifty cents worth of this insurance in the house.

BIG DIVIDENDS
J. Ernest H. Worth
DRUGGISTS
142 Prince Street

Crop Report

General

Wheat seeding in the Prairie Provinces has been 75% to 90% completed under favourable conditions with the season a week to 10 days ahead of the average. The acreage sown to wheat is slightly less than last year, with a corresponding increase in coarse grains; seeding of coarse grain is well advanced. The seed bed generally is in good condition with ample moisture for germination but moisture reserves in the subsoil in most districts is low although recent rains have improved the situation. Early sown grain is now showing through the ground. In Quebec Province little Spring ploughing and seeding has been done except in the warmer sections on high and light lands. In Ontario seeding has commenced in all districts, and in the Essex District the season is two weeks ahead of the average. In the Maritime Provinces, Spring opened early and conditions generally are well ahead of the average. In British Columbia weather conditions are favourable and field work is well advanced. Details follow:

Prairie Provinces

ALBERTA, WESTERN AREA: Wheat seeding is 82 1/2% complete with plant showing above the ground in some sections. The sugar beet acreage will show a large increase over last year, with 50% now planted.
ALBERTA, NORTHEASTERN AREA: Wheat seeding is about 79% completed and recent rains will promote even germination.
ALBERTA, SOUTHEASTERN AREA: It is estimated that the wheat acreage will show a decrease of 10%. Approximately 75% of the wheat has been seeded under favourable conditions.
SASKATCHEWAN NORTHERN AREA: Wheat seeding is now 75% completed, with the seed bed reported in good condition and with ample moisture.
SASKATCHEWAN SOUTHERN AREA: Wheat seeding has been 80% completed under favourable conditions with the seed bed in good condition.
MANITOBA: Wheat seeding has been practically completed and about 35% of the acreage to coarse grains sown. Soil is in good condition with sufficient moisture and warmth promoting early growth.

Province of Quebec

An average amount of fall ploughing generally was completed last Autumn. Pasture lands and fruit trees wintered well. Present weather conditions especially in the northern section of the Province are backward. The season's production of maple syrup was about average.

Province of Ontario

In southwestern Ontario seeding is well advanced and some early crops are up. Fall wheat which due to the dry fall started winter in poor condition has suffered severely and 1-3 was winter killed, with losses in Central Western Ontario the greatest. Warm weather and rains are needed in all districts. In the tobacco districts plants are still in hot-beds but growth is favourable. The acreage of Burley tobacco will show an increase but all others will be reduced in the Niagara Districts fruit trees and strawberries wintered satisfactorily. Conditions appear about average.

Maritime Provinces

The ground is in good condition and field work well advanced. Seeding and planting have commenced in some districts. It is estimated that the potato acreage will be larger than last year and close up to the five year average. Apple trees wintered well; bud development however, is below average.

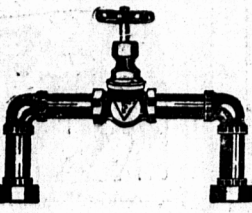
Province of British Columbia

Seeding has been about 80% completed. Tree fruits are in good condition and indications point to heavy crops. The potato acreage will be about the same as last year while



Steam Equipment

With complete stocks of practically every item used to control and regulate steam supply, including Fairbanks and Pratt & Cady Valves, we can meet the demands of a wide variety of services: Our men are experienced in supplying not only the appropriate single valve, but also every item of a steam line, complete to engineers' blue prints, numbered and ready to install.



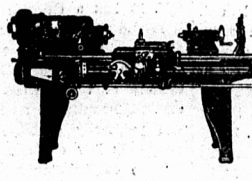
Fairbanks-Morse
Pumps and Motors

"A pump for every purpose"—for water, sand, air, sewage or stock, we can supply the special type of pump best suited for the service required. Fairbanks-Morse Pumps, either separate drive, or direct-connected to Fairbanks-Morse Ball Bearing Motors, have made unusual records for efficiency and dependability.



Machinery and Supplies

Machine tools of all sorts ranging from a delicate precision lathe to a huge punch press or shear—automatic screw machines, shapers, grinders, drills, millers, threaders, planers—each selected for its proven ability—you can obtain any of them promptly through our machinery department, and here you will also find a wide range of small tools, precision instruments, taps, drills, files, grinding wheels, abrasive papers, in fact practically everything needed for modern machine shop production and maintenance.



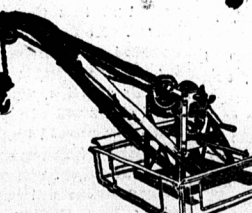
Fairbanks Scales

For a century Fairbanks Scales have been known for their enduring accuracy, and each one of the many types has been perfected in design and build, to weigh not only accurately but also to register clearly at the utmost speed. From tiny delicate balance up to huge track scale, the Fairbanks line includes scales for practically every weighing purpose.



Automotive Supplies

In our Automotive Departments we carry large and varied stocks of supplies, replacement parts and garage equipment. Garages, Repair Shops and owners of Bus and Truck fleets are assured of an excellent service in parts and supplies, such as Spark Plugs, Chains, Fire Extinguishers, Wrench Sets, Brake Linings, Pistons, Rings, Pins and Bearings, Ignition and Battery Cable, Gaskets, Carburetors, Alemite Fittings, etc., as well as complete equipment for repairs and maintenance, including Cranes, Tire Changers, Presses, Spraying Outfits, Hoists, Test Stands, Air Compressors, etc.



In our Branches you will find stocks of mechanical equipment and shop supplies that for variety and quantity are unequalled in Canada. Aside from the many lines made by us, we have been selected to represent many of the world's outstanding makers of machine tools, machinery, equipment and supplies. Our general catalogue shows clearly how wide a service we provide for Canadian industry. A copy will be mailed without charge.

The CANADIAN Fairbanks-Morse COMPANY Limited

St. John Quebec Montreal Ottawa Toronto Hamilton Windsor Kitchener London
Fort William Winnipeg Regina Saskatoon Calgary Edmonton Vancouver Victoria

about 25% more will be planted in strawberry plants and log-tomatoes. Strawberry plants and log-tomatoes bushes have suffered from winter frosts, but other small fruits are in good condition. Much fall wheat and alfalfa hay were winter killed, necessitating reseeded. Spring sown grain is just appearing. Pasture is in excellent condition.

Mrs. Ben McDonald and daughter Helen, Glencoe, were recent visitors to the city.
Mr. Johnnie Currie was a recent visitor to the city.

Mrs. Frank Murphy, Somerville, was a recent visitor to Vernon River. The play held in the C. M. B. A. Hall, here was well played and a large crowd came from far and near to see it.

VERNON RIVER AND VICINITY

Mr. George Tweedy, lawyer, city, was a visitor at his home here on Saturday last.

Mr. Shaw MacMillan, Alberly Plains, was a recent visitor to the city.

Mr. Charlie McLennan, was a visitor to St. Georges on Sunday.

Mr. Ernest Collins and Mr. Al. Carver were recent visitor to the city.

Mr. and Mrs. Clarence Wood, are receiving congratulations on the arrival of a baby girl.

Toast - -
crisp - - evenly browned
Have it for breakfast or lunch and enjoy the convenience of making it right at the table on a Hotpoint Electric Toaster.
Hotpoint
TOASTOVER TOASTER
Sold by
ASSOCIATED GAS AND ELECTRIC SYSTEM