

What was this beautiful girl's story?



Madge Bellamy in THE WHITE SIN

A PALMER PHOTO-PLAY

Harold Shumate, a new writer to the screen, wrote this story and he has injected into it the sparkling fire of optimism...

Here is big drama, delightful comedy, unusual and intriguing situations cleverly woven into a story that will hold your attention every second!

With a cast including Madge Bellamy, John Bowers, Francella Billington, Hal Cooley, Otis Harlan and many other well-known favorites the characters become real human beings that could step right off the screen and take their places in every day life.

It's the kind of a picture that should be seen by every member of every family!

Directed by WILLIAM A. SEITER

Pathe News—and—Topics of the Day

Prince Edward

TODAY AT 3.15, 7 AND 8.45 MATINEE—26c AND 16c, NIGHT—37c, 26c, 16c.

THE CENTRAL GUARDIAN

SHOP FROM Holman's Catalog—CHURCH OF SCOTLAND—Rev D. M. Lamont will preach Sunday 15th at Lot 48, 2.30 p. m. and at Peoples Church, City 7 p. m.

AFTERNOON TEA AND ANTIQUES.—Reserve Thursday, Feb. 26 for Afternoon Tea and Antiques at Christian Church 406-2-12-11

NORTH TRYON.—If the traveling is favorable there will be preaching services on Sunday, Feb. 15th in North Tryon church at 11 a. m. and Borden Union Hall at 7 p. m. conducted by Rev M. J. Macpherson.

DOING WELL.—Marshal Cameron, Chief of the Charlottetown Police Force, who had his leg amputated above the knee in the Charlottetown Hospital on Tuesday morning, had a good day yesterday, and was resting comfortably. Chief Cameron joined the city force on June 15, 1872 and was appointed City Marshal June 13, 1890. In the carrying out of his duties he has always shown himself an efficient and fearless officer and has earned the respect and esteem of citizens and police officers alike.

For First Aid—Minard's Liniment.

George of Greece Lodged in Jail

BUCHAREST, Feb. 11—since his exile King George of Greece has been learning the ways of democracy. He was arrested yesterday for violation of traffic regulations and spent half an hour in a cell in the police station before he was recognized and released.

Was Knighted In The States

TORONTO, Feb. 11.—Hon. George P. Graham, Minister of railways has a ready wit. Not long ago he visited New York, and during his stay urged upon a gathering of newspaper men the publication of more Canadian news in United States papers. The suggestion was well received, but the incident gave rise to a rather amusing piece of repartee. A weekly journal, published in the interests of newspapermen, gave some space to the address, but styled the speaker "Sir George Perry Graham," in direct violation of the resolution moved in the House of Commons by Hon. W. F. Nettle, now attorney-general of Ontario, asking that no further titles be conferred upon Canadians.

When Mr. Graham's attention was called to the paragraph he replied, with a twinkle in his eye: "It pleases them and it don't hurt me. So why worry?" An old newspaper man himself, Mr. Graham is a stickler for accuracy, and he added: "If a Canadian editor had done that he would have been 'fired.' But then, they are not as careful over there as they are here, are they?"

Simple Way to Take Off Fat

Can anything be simpler than taking a convenient little tablet four times each day until your weight is reduced to normal? Of course not. Just purchase a box of Marmola Prescription Tablets from your druggist for one dollar, and start now to reduce. Follow directions—no starvation, dieting or tireless exercising. Eat a substantial food, be as lazy as you like, and keep on getting slender. Thousands of men and women each year regain healthy, slender figures by using Marmola Tablets. Purchase them from your druggist, or send direct to Marmola Co., General Motors Bldg., Detroit, Mich.

HEAR HON. J. H. BELL'S famous Ventriloquist Act tonight representing the conversation between "Balaam and His Ass," Caledonian Club 8 p. m. 404-2-1211

SMELT FISHING SEASON EXTENDED.—Inspector Gallant is in receipt of a telegram from Ottawa stating that the smelt fishing season is extended to and including Saturday the 28th. Signed W. A. Found, Director of Fisheries.

CALEDONIAN CLUB LECTURE TONIGHT.—Hon. J. H. Bell will deliver a lecture "A Pilgrimage to Jerusalem" in which he will introduce the famous episode of the conversation between Balaam and His Ass. 404-2-12-11

C. N. R. PROGRAM

THURSDAY, FEB. 12, 1925

CNRM (425 Metres) MONTREAL QUE.

Presenting a Section of the Montreal Symphony Orchestra in Musical Selections under the direction of Mr J. G. Gagnier

- 1. March—"Colonel Bogey" (Alford)
2. Waltz—"For a Rose" (Waldteufel)
3. Overture—"The Beautiful Galleon" (Supe)
4. Tone Picture—"The Angelus" (Massenet). From "Scenes Pittoresques"
5. Hawaiian Guitar Solo (a) "One, Two, Three, Four," (b) "Swanee River" (Foster)—Mr J. T. Livingstone.
Address—Mr Wm. P. Fitzsimons, Manager Industrial Department, C. N. Rys.
6. Suite—"Cinderella" (Mosmer): (a) By the Hearth, (b) The Godmother and the Fairies, (c) The Court Ball, (d) The Royal Nuptials.
7. Minuet—"Celebrated Minuet" (Paderewski)
8. Hawaiian Guitar Solo (a) "Kalohi Serenade" (Kalohi) (b) "The Rosary" (Nevin).
9. Japanese Muzurka—"The Geisha Girl" (Gaune.)

CNRW (450 metres), WINNIPEG, MAN.

Weekly Livestock Market Reports 8.15 p. m.—Bedtime Travel Tales 8.30 p. m.—Studio Programme for this date has been set aside for Old Time Songs. Announcement covering this will be made two or three weeks in advance, and listeners in given an opportunity to let us know what they wish to hear. On receipt of this information, programme will be drawn up and requests will be taken care of by the following: artists: Miss Kathleen Daly, Soprano; Mr Al. Kilgour, Mr Geo. E. Aylett and Mr Ronald Gibson, Pianist. Address—Impressions of Canada, 10 p. m.—Frank Wright's Country Club Dance Orchestra in Dance Pro-

Blame Yeast King's Death For Chicago Wheat Crash

CHICAGO, Feb. 11.—A dead man was blamed for the crash in the wheat market which wiped out hundreds of small speculators who bought wheat on a shoestring of reports of fortunes made overnight when Julius Fleischmann, yeast king, died at Miami, Fla., he was "long" 10,000,000 bushels of May wheat and 7,000,000 bushels of July wheat, brokerage houses made it known. In line with the jolty to liquidate fluctuating assets of the estate, the holdings of wheat were thrown on the market yesterday. The break came around noon, after a morning of seeming strength. In the twinkling of an eye, the market had turned topsy turvy. The pit turned into a riot and prices fell so rapidly that at times there was a difference of 1 to 2 cents in prices quoted at the same time at various points in the pit. Many of the victims thought they were protected by their stop loss orders. But the prices fell so rapidly that stop loss orders offered no protection, sales being executed as much as two and three cents under stop loss figures. The low point was \$1.85, compared with the opening price of \$1.94.

gramme direct from Main Dining room of the Fort Garry Hotel.

CNRC (430 metres), CALGARY, ALTA.

9 p. m. (M/T.) Bedtime Travel Tales Studio Programme—The Orpheus Quartette

- Composed of the following: Mr A. C. McGaghey, Cello; Mr V. L. Samuelson, Violin; Mr G. H. Deslandes, Flute; Mr E. T. Gurling, Piano.
1. Overture—From "Martha"—Orpheus Quartette
2. Flute Solo—Selected—Mr G. S. Deslandes
3. Selection—"Hava" (Maurice)—Orpheus Quartette
4. Trio—"Autumn and Winter"—A. McGaghey, Cello; V. L. Samuelson, Violin; E. T. Gurling, Piano.
5. Violin Solo—Selected—V. L. Samuelson.
6. March—"The Minute Man"—(Buzo)—Orpheus Quartette
7. Piano Solo—"Invitation a la Valse" (Weber)—E. T. Gurling
8. Overture—"Irish Melodies"—Orpheus Quartette.
9. Selection—"Resignation"—(Fauconier)—Orpheus Quartette.
10. Trio—Selected
11. Cello Solo—Selected—A. C. McGaghey.
12. March—Selected—Orpheus Quartette
13. Selection—"Il Trittore"—(Verdi)—Orpheus Quartette
14. Flute Solo—Selected—G. S. Deslandes
15. Selection—"The Little Souffrette" (Granfield)—Orpheus Quartette
16. Violin Solo—Selected—V. L. Samuelson
17. Selection from "Faust"—Orpheus Quartette
Mrs F. B. Ruckert and Miss Ester Williams Lab and party assisted by A. Phillips, Violinist; followed by Dance Programme from Plaza Cabaret. 398-2-12-11

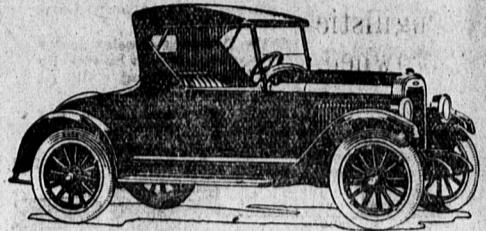
SADDLE SOAP FOR SHOES

Soap that is used for cleaning saddles is excellent for cleaning children's shoes since it leaves them soft but not watersoaked.

Experience cannot be bought on credit.

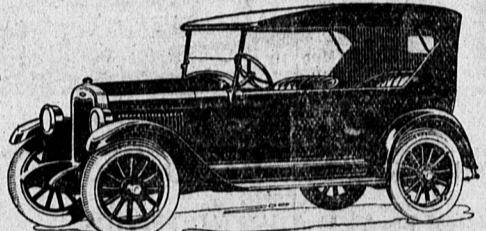


New Radiator Large Honeycomb Radiator with highly-polished nickel finish shell, adding greatly to the appearance of the car.



The Roadster \$735 at Factory, Taxes Extra.

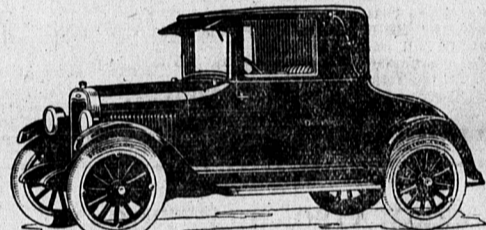
New Clutch Single plate dry disc type—easier, smoother, more positive, requires no lubrication. Clutch and fly-wheel fully enclosed.



The Touring \$735 at Factory, Taxes Extra.

New Axles Rear axle re-designed, strengthened and enlarged; gear contact greatly increased; one-piece banjo type housing. Front axle strengthened.

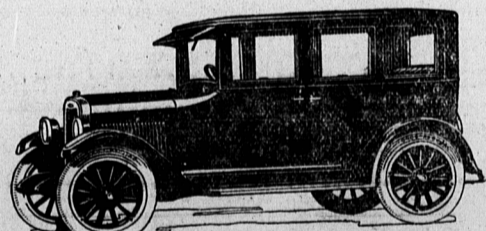
New Springs Semi-elliptic chrome vanadium steel springs—rear springs underlung—Alomite lubrication.



The Coupe \$995 at Factory, Taxes Extra.

New Frame Longer and stronger. Five sturdy cross members. Deep channel steel construction.

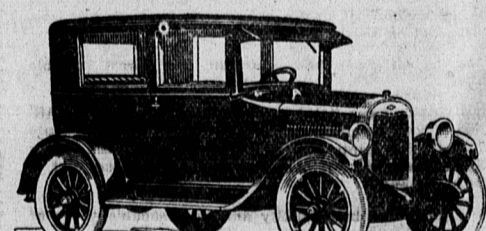
New Bodies Open bodies longer and roomier; modern full stream lines; beautiful, durable upholstery on deep cushion springs. Closed models have new and more beautiful bodies by Fisher.



The Sedan \$1165 at Factory, Taxes Extra.

New Finish Lustrous, durable Duco. Open models and Coach in rich dark blue. Sedan, aquamarine blue and black. Coupe Ontario grey and blue.

New Motor Refinements Improved construction for carburetor and manifold. Extra wide crankshaft bearings. Rocker arms and valves enclosed for better lubrication and protection from dust and dirt.



The Coach \$1015 at Factory, Taxes Extra.

New Windshields Closed models have new type VV one-piece windshield with automatic windshield wiper. Open models with new pattern very low bottom windshield, rubber weather stripped.

Now on Display

A. HORNE & CO. Charlottetown, P. E. I. GEO. D. POPE & SON Summerside, P. E. I.

E. R. Brow 146 Richmond Street Charlottetown Fire, Life, Accident, Sickness and Plate Glass Insurance at Lowest rate. Agent at Summerside, Lloyd Lewis. Good Strong Stock Companies.

Fleischmann Had Million Insurance NEW YORK, Feb. 10.—Julius Fleischmann was among the first seven most highly insured citizens in the United States when he died. According to insurance statistics available here, the yeast king held policies totalling approximately \$1,000,000 in 1923. The most highly insured man in the country is Rodman Wanamaker, who holds policies totalling \$77,000,000.

SORE THROAT Don't take the chance of getting pneumonia. Check that cold now with Minard's. Take half a teaspoon internally in molasses and rub Minard's on throat and chest. Quick relief. MINARD'S 'KING OF PAIN' LINIMENT

'THE WHITE SIN' AT THE PRINCE EDWARD Do not miss seeing 'The White Sin' at the Prince Edward Theatre today, if you are interested in positively GREAT screen stories well enacted. The story of 'The White Sin' is from the pen of a masterful young playwright, Harold Shumate, a former bond salesman of St. Louis. The cast is headed by Madge Bellamy, and those who think they know that actress haven't really seen her ability yet—until they witness her superb work in interpreting Mr. Shumate's character, 'Hattie Lou' in 'The White Sin.' It presented Miss Bellamy the chance of her lifetime in powerful, realistic, human characterization, and no one who sees the picture will deny that she rose to inspired heights in this portrayal. 'Hattie Lou' of the story is a character that should live in screen literature, and 'Hattie Lou' as Madge Bellamy creates her in the film is going to make picture history and history in Miss Bellamy's career. Opposite her in the hero role is John Bowers, playing young 'Grant Van Goro.' Do actors all derive emotional power from wonderful story characters? It would seem so, for this gifted young leading man, as in the case with Miss Bellamy, rises to heights of histrionic art that he has never before achieved. Another splendid characterization is that of Hal Cooley in a semi-villain role; and another by Francella Billington, making of the quartette that carries the chief burden of the picture one of the most perfectly working teams ever brought together. But there are eight more very important characters; one might almost call them 'principals' also, for each part taken is a vital, splendidly-played bit of the author's screen play, with the acting honors

CHILDREN LIKE IT REXALL SYRUP WHITE PINE AND TAR Tastes good, children take it willingly, nothing better for coughs, colds, bronchitis and all irritations of the throat. The ideal household Cough Remedy Price 35c and 60c Bottle Sold Only By MacKinnon Drug Co. Phone THE REXALL 2080a 219 KODAK STORE 552

At Meal Time Snap Into It Your Box of Stuart's Dyspepsia Tablets Enables You to Face a Big Banquet with Delight. Those grouchy dyspeptics who throw a fit when food is fried can get back in the good graces of the family circle by the simple expedient of Stuart's Dyspepsia Tablets. One or two at meal time not only aid digestion but stop acid fermentation, clear away the gasiness, carry off the bloated feeling, and soothe and make the stomach carry with ease the foods that used to apparently cause dyspeptic depression. These tablets sweeten the stomach of the dyspeptic by giving it the alkaline effect as in health. Thus, whether you eat corned beef and cabbage, pork sausage, mince pie, buckwheat, baked beans, or other table horrors, you laugh at all fear of a bad case today of Stuart's Dyspepsia Tablets and then tell dyspepsia to go hang.

Anglican Church Plans a New Overseas Council LONDON, Feb. 11.—The commission appointed by the Church of England assembly to deal with the question of overseas settlement has issued a report approving the establishment of a board entitled 'the council of overseas settlement' for the promotion of the policy of the government as embodied in the empire settlement act. The council's duties include the promotion of overseas settlement by the dissemination of information as to openings in the dominions, the selection and shipping of such settlers, arrangement for spiritual ministrations en route, provisions, in conjunction with the church overseas for their reception, placing and after care. The council creates its own organization, seeking incorporation if desired. The chairman is to be the Archbishop of Canterbury. SAVE WAXED PAPER Save the waxed paper that comes on bread to try your flatirons on. You get just about the right amount of paraffin to make the smooth without leaving any greasy stain. The last hard pull gets us over the hill.