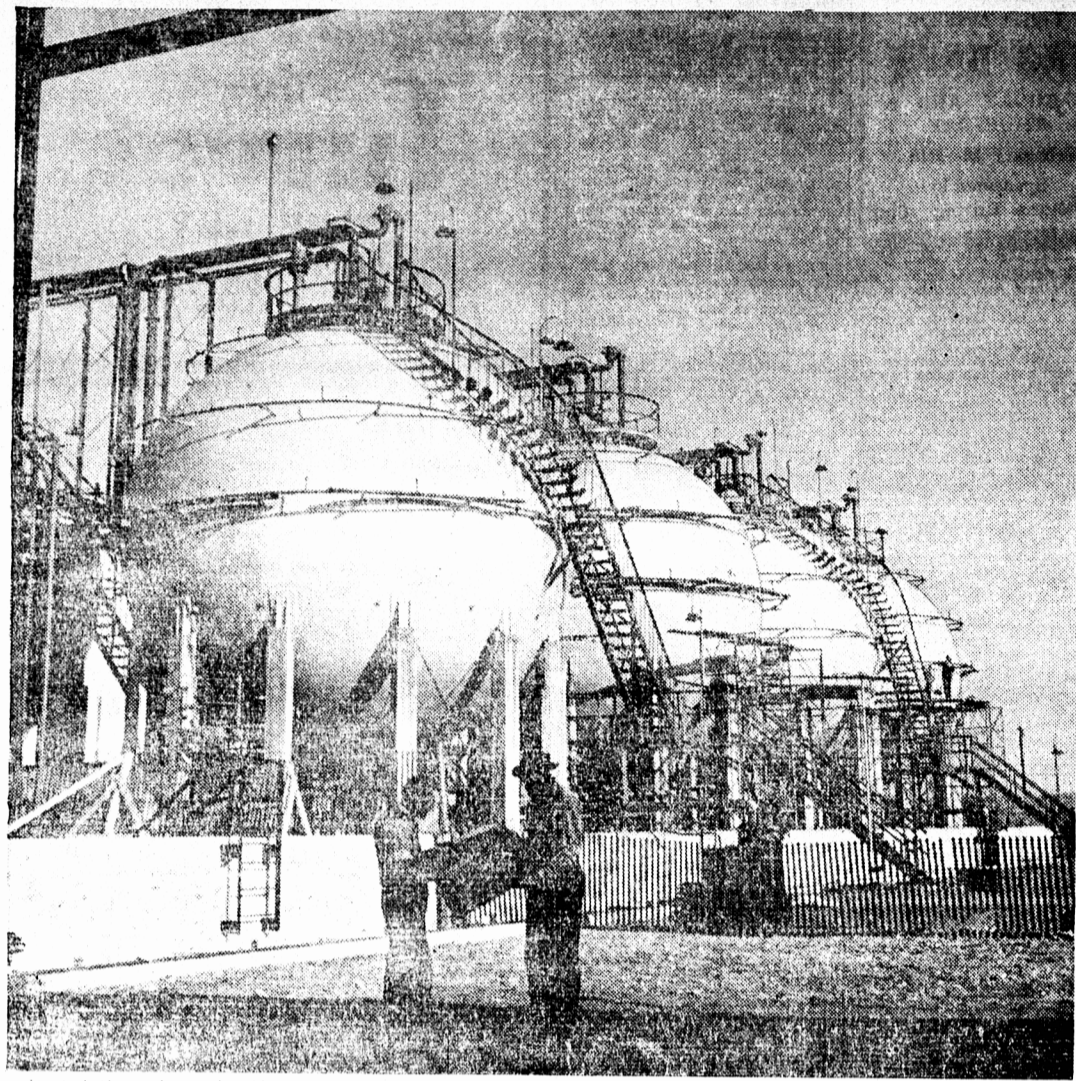


Canada's Synthetic Rubber Production Helps Replace Sources Lost to Japanese



Dotted throughout the 185-acre plant of the Polymer Corporation near Sarnia, Ont., are grey steel Horton spheres used in the production of synthetic rubber.

Thirteen in number, they are 51 feet in diameter, and will hold 12,000 barrels of hydrocarbons. Five above contain butadiene, one of chief ingredients of Buna-S.

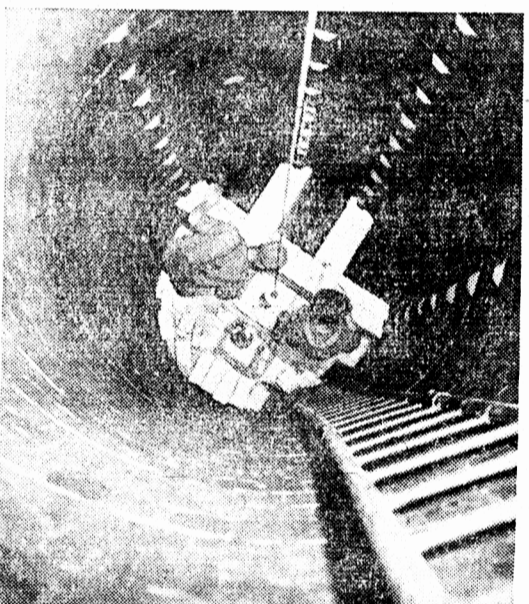


Giant tower at Sarnia synthetic rubber plant took five days to move on three flat cars from Montreal, was one of the biggest jobs in building Polymer plant.

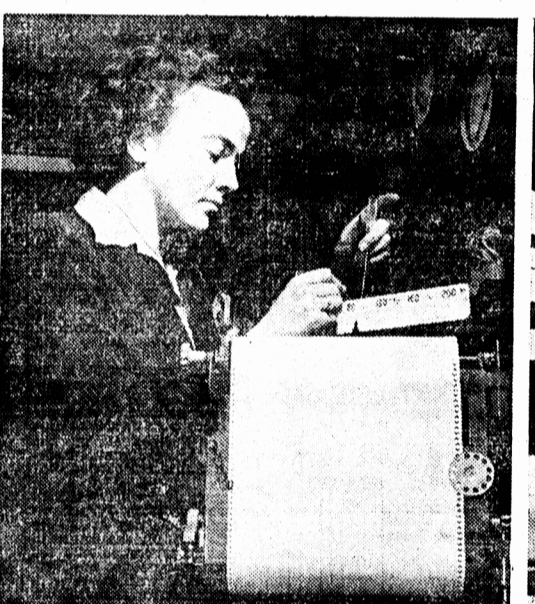
New plant is first of its kind in the Dominion. It began production one year after the first sod was turned, and it's now rolling out rubber for victory.



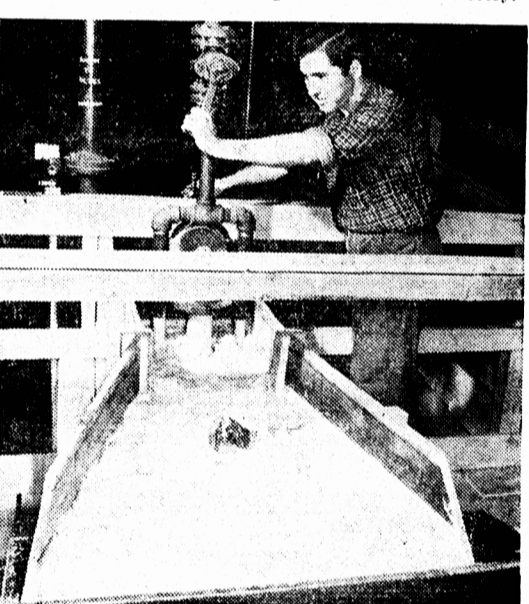
It looks dangerous but it doesn't bother the masked welder. He's part of crew who built latest addition to Canadian industry that turns out synthetic rubber.



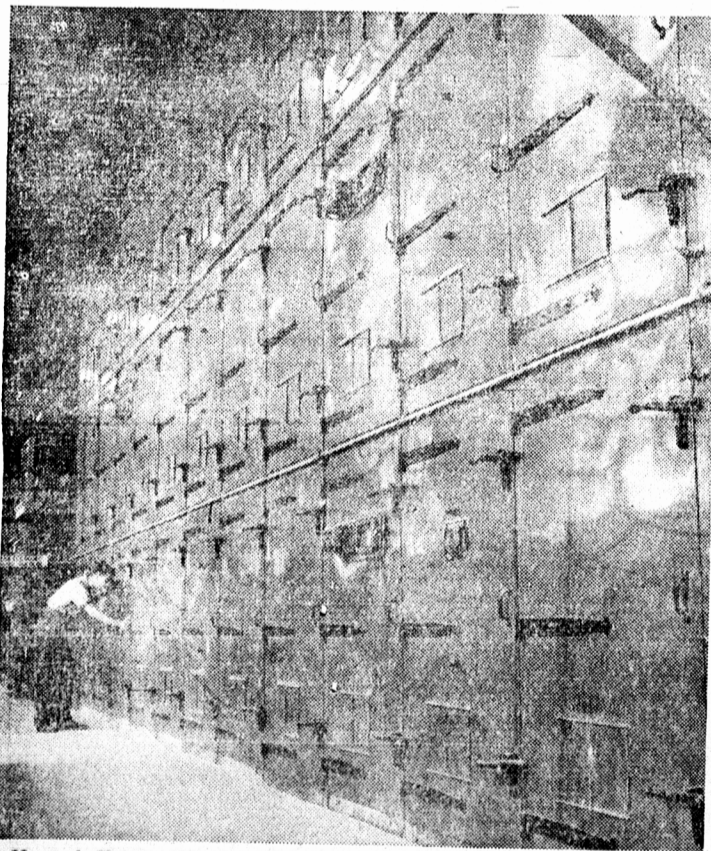
Interior of retort used in production of synthetic rubber for planes, life-rafts, trucks, other weapons. It works on same principle as school lab. retorts.



Doris Bannon of Proton, Ontario, oiling and adjusting recorder that keeps tab on temperature during process making synthetic rubber. She is graduate of Queen's.



Peter Krywicki of Sarnia and Toronto, regulates flow of synthetic latex that will be dried, weighed and baled for shipment to factory making military tires.



Howard Hayes, Western University graduate, looks through window at side of drier to see synthetic rubber move along continuous roller. Each drier is 65 feet long, 25 feet high, 10 feet wide.



Every 37 seconds 75-pound bales of synthetic rubber are turned out. Annual rate is 38,000 tons. Henry Deguire, left, Lyle Bell, right, weigh bales and then pack them in cartons for shipment.



Stock piles of tires for military trucks grow higher and higher as Canada's synthetic rubber production swings upward, replacing sources lost when Japan attacked natural rubber producing areas.

National Film Board Photos