

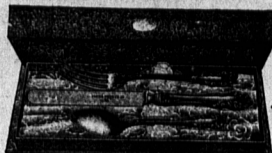
# Run Down

If you are all run down, easily tired, thin, pale, nervous, go to your doctor. Stop guessing, stop experimenting, go direct to your doctor. Ask his opinion of Ayer's non-alcoholic Sarsaparilla. No alcohol, no stimulation. A blood purifier, a nerve tonic, a strong alternative, an aid to digestion.

## For a Child's Birthday

### Community Silver Child's Set

would fit in very nicely. Each set in a nice satin lined case.



W. WELLNER, Jeweler.

### Nothing Better for a Gift Than a PHOTOGRAPH

From our Studio G. H. COOK, New Des Brisay Block, The Studio Where H. B. Always Wins

### "HUGHES" Digestive Tonic

Renews the Appetite. Imparts Strength Quickly. Maintains Permanent Effects. It is a most valuable medicine for persons who are recovering from an attack of the grippe.

Price 25c per box. GEO. E. HUGHES, Apothecaries Hall

### Hockey Boots

The best value in the city. "Our Leader," Men's, \$2.00 a pair. "Our Leader," Boys, \$1.75. Small Boys \$1.45. This is the best Hockey boot in Canada for the money—other boots are a little lower in price than our stores.

### A. E. McEACHEN

The Shoe Man. DR. T. ECKIE M. R. C. V. Veterinary Surgeon. Graduate of the Royal College of Veterinary Surgeons, Glasgow, Scotland. ADDRESS—Eldon Hotel, Kent St.

### COAL Reserve Run Mine, Inverness Round, Hard Chestnut All in shed clean and dry at Geo. E. Full's Coal Yard

1221f

### Special Sale OF THE Eagle Shoe

This week we offer 100 pairs of men's American Goodyear welted shoes at a discount of 20 p c Regular prices are 3.75, 4.25, 4.50 and 4.75 less

20 p c This is a rare chance to get a first class shoe at a very low price. Come quick if you want a pair.

Sprague & Co. Sunnyside

are the best on the market. Ask for White's and take no other.

Velveteen Molasses Kisses

are the best on the market. Ask for White's and take no other.

## THE QUEEN'S COUNTY GUARDIAN

Head Offices in New Prowse Block—Charlottetown.

The program of St. Paul's concert will appear later. The date is Tuesday Feb. 4th.

Willie Mobbs, of Winchester, Mass., has returned to his home after spending a two weeks vacation with friends and relatives in this city.

Everybody who can possibly manage it has "got a skate on" just now. There are many places on the river where skating conditions are ideal.

Mrs. W. T. Huggan, City, left yesterday afternoon for Sea View to be present at the funeral of her sister, Miss Mary Sutherland, whose death took place Monday after a short illness.

T. A. and Mrs. Stewart and family desire to express their sincere thanks for the many acts of extreme kindness shown them by friends in the sad affliction of the death of their daughter Bessie.

The quarterly meeting of the New Brunswick and P. E. Island Sunday School Association was held recently in St. John, T. S. Simms presiding. Encouraging reports were received from the various departments. It was decided to hold the next annual convention in St. Stephen.

The remarkable appearance of the streets of Charlottetown at the present time is general subject of comment. Streets bare of snow and ice at the end of January is a something unusual thing, and yesterday with a bright sun shining it was hard to believe that midwinter was reigning.

The market yesterday was but poorly attended, the travelling by road evidently being so difficult for sleighs, by reason of the recent rain that not many people were able to come to town. A number of teams came to town by the river, but those who had to come by road had to use wheeled vehicles, and the roads were very rough.

The heavy rain on Monday night and the mild weather accompanying it completely removed every vestige of snow from the surface of the ice on the rivers and harbor. The cold spell which ensued was the means of forming a thin layer of ice, and afforded iceboaters and skaters a limited scope for indulging in their favorite sports.

The Guardian takes pleasure in publishing the following for the information of such of its readers as may be disposed to apply: By instruction of the Hon. Minister of Agriculture a distribution is being made this season of samples of superior sorts of grain and potatoes to Canadian farmers for the improvement of seed. The stock for distribution has been secured mainly from the Experimental Farms at Indian Head, Sask. and Brandon, Man. The samples consist of oats, spring wheat, barley, Indian corn (for ensilage only), and potatoes. The quantity of oats sent is 4 lbs., and of wheat or barley 1 lb., sufficient in each case to sow one-twentieth of an acre. The samples of Indian corn and potatoes weigh 3 lbs. each. A quantity of each of the following varieties has been secured for this distribution:—Oats—Banner, Wide-Awake, White Giant, Danby, Island, Thousand Dollar, Improved Ligowo, all white varieties. Black oats are not recommended for general cultivation, a few samples however, are available which can be sent if specially asked for. Wheat—Red fife (beardless); Preston, Prince's Champlain and Huron (early bearded sorts); Percy and Stanley (early beardless varieties). Barley—Six-rowed—Mensury, Odessa, Mana, Head, Invincible, Canadian, Standwell, Invincible, Canadian, Thorp and Sidney, Indian Corn (for ensilage)—Early sorts, Angel o' Midnight, Compton's Early and Longfellow; later varieties, Selects, Learning, Early Mastodon and White Cap Yellow Dent. Potatoes—Early varieties, Early White Prize and Rochester Rose. Medium to late varieties, Carman No. 1 and Late Puritan. These latter varieties are as a rule more productive than the earlier kinds. Only one sample can be sent to each applicant, hence if an individual receives a sample of oats it cannot also receive one of wheat, barley, Indian corn or potatoes. List of names from one individual, or applications for more than one sample for one household, cannot be entertained. The samples will be sent free of charge through the mail. Applications should be addressed to the Director of Experimental Farms, Ottawa, and may be sent in any time before the 15th of February, after which the lists will be closed, so that the samples asked for may be sent out in good time for sowing. Applicants should mention the variety they prefer, with a second sort as an alternative. Applications will be filled in the order in which they are received, so long as the supply of seed lasts. Farmers are advised to apply early to avoid possible disappointment. Those applying for Indian corn or potatoes should bear in mind that the corn is not usually distributed until April, and that potatoes cannot be mailed from here until danger from frost in this area is over. No postage is required on mail matter addressed to the Central Experimental Farm, Ottawa. Application should be made to WM. SAUNDERS, Director of Experimental Farms.

The Guardian takes pleasure in publishing the following for the information of such of its readers as may be disposed to apply: By instruction of the Hon. Minister of Agriculture a distribution is being made this season of samples of superior sorts of grain and potatoes to Canadian farmers for the improvement of seed. The stock for distribution has been secured mainly from the Experimental Farms at Indian Head, Sask. and Brandon, Man. The samples consist of oats, spring wheat, barley, Indian corn (for ensilage only), and potatoes. The quantity of oats sent is 4 lbs., and of wheat or barley 1 lb., sufficient in each case to sow one-twentieth of an acre. The samples of Indian corn and potatoes weigh 3 lbs. each. A quantity of each of the following varieties has been secured for this distribution:—Oats—Banner, Wide-Awake, White Giant, Danby, Island, Thousand Dollar, Improved Ligowo, all white varieties. Black oats are not recommended for general cultivation, a few samples however, are available which can be sent if specially asked for. Wheat—Red fife (beardless); Preston, Prince's Champlain and Huron (early bearded sorts); Percy and Stanley (early beardless varieties). Barley—Six-rowed—Mensury, Odessa, Mana, Head, Invincible, Canadian, Standwell, Invincible, Canadian, Thorp and Sidney, Indian Corn (for ensilage)—Early sorts, Angel o' Midnight, Compton's Early and Longfellow; later varieties, Selects, Learning, Early Mastodon and White Cap Yellow Dent. Potatoes—Early varieties, Early White Prize and Rochester Rose. Medium to late varieties, Carman No. 1 and Late Puritan. These latter varieties are as a rule more productive than the earlier kinds. Only one sample can be sent to each applicant, hence if an individual receives a sample of oats it cannot also receive one of wheat, barley, Indian corn or potatoes. List of names from one individual, or applications for more than one sample for one household, cannot be entertained. The samples will be sent free of charge through the mail. Applications should be addressed to the Director of Experimental Farms, Ottawa, and may be sent in any time before the 15th of February, after which the lists will be closed, so that the samples asked for may be sent out in good time for sowing. Applicants should mention the variety they prefer, with a second sort as an alternative. Applications will be filled in the order in which they are received, so long as the supply of seed lasts. Farmers are advised to apply early to avoid possible disappointment. Those applying for Indian corn or potatoes should bear in mind that the corn is not usually distributed until April, and that potatoes cannot be mailed from here until danger from frost in this area is over. No postage is required on mail matter addressed to the Central Experimental Farm, Ottawa. Application should be made to WM. SAUNDERS, Director of Experimental Farms.

### English Market Basket's

We have just received a case of market baskets direct from the old country; There are several different sizes and styles and they are now open for your inspection at

### BEER @ GOFF'S.

### I. A. S. BAYER

### Photographer

Telephone 192, Charlottetown P. E. Island

### HOTEL BRUNSWICK

The Largest and Best Located Hotel in the City. Accommodating 200 guests situated in the centre of spacious grounds and surrounded by elegant shade trees making it a desirable resort for tourists in the summer season.

British Almond Pink—The old reliable for chapped hands and roughened skin. It has no equal. Gloves can be worn immediately after using. 25c per bottle. A. W. Reddin Pharm. B. Sunnyside.

C. McLure, Charlottetown is in Truro.

One of the best entertainments of the season will be at St. Paul's schoolroom next Tuesday 4th Feb.

A. P. Prowse, M.L.A., Murray Harbor, who was in the city yesterday returned home by the afternoon train.

Oats are scarce at present it is said on the Charlottetown market. That is offering is bringing thirty-line cents per bushel.

There was but a small amount of rice paid was from seven to seven and a quarter cents.

Rev. Jas. McDougall will preach (D.V.) on Saturday the 1st at DeSable at 7 p.m., and on Sunday the 2nd at DeSable at 8.30, Argyle shore at 3, and Canoe Cove at 7.

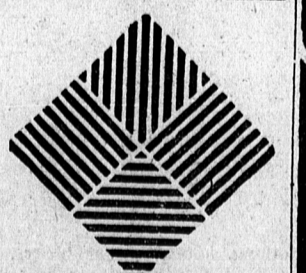
The death occurred on Sunday at Alexandra after a long illness of Mrs. Richard Burhoe who leaves to mourn the following sons: William, Henry, Theophilus and Thomas in Alexandria, Franklin in Westboro, Mass., and John of this City.

Rev. J. K. King, Methodist Minister at Boiestown, N.B., and at one time stationed at Tryon, was recently presented with a lovely watch by the members of his congregation in Boiestown; a purse of money from his congregation at Parker's Ridge and numerous presents from friends at Boiestown. Mr. King has been on the circuit for nearly three years and his work is much appreciated and earning good fruit. The congregations are large and the finances are better kept up than for many years.

Considerable interest was manifested yesterday by a number of spectators at the railway dock in the actions of a young gentleman of excellent frame and graceful proportions who was practicing skating with a pair of skates of a new pattern. The success attending his efforts was marked—occasionally he could make a mark by falling upon the ice with a dull H. H. and the echoes would resound to the joy of his oratory. The outcome of his experiment was a triumph for the invention and creation of a mechanic in the service.

The annual meeting of the Presbyterian congregation at Cove Head was held recently. The finances of the congregation were in a most encouraging condition—there being an increase in the general funds and in contribution to the schemes of the church. The minister was paid in full and all obligations met. There remained in the treasury a balance of \$124. There is no debt on the congregation, and, with continued good work, its outlook is promising. Sixteen were added to the Church on profession of faith during the year—G. McCallum, H. H. Gregor, G. T. Cairns, Robert Shaw, and M. Kelly were elected trustees for the year 1908.

P. J. Burns, M.P.P., and Gilmour Brown, C.E., the commissioners appointed to report on the branch railways in New Brunswick, have performed their task, and arrive at the conclusions that those lines should be taken over by the government as part of the Intercolonial system, of which the report states they are very important feeders. There are five of these branch lines, including the Caraque, Brent Northern, Beersville, Moncton, and Buctouche, N.B. and P.E. Island, Salisbury and Harry, Elgin and Havelock, St. Mary's, York and Carleton. There is in addition the Central, from Norton to Minto, which is expected to become part of the Intercolonial system. The commissioners make no report of the last named line. Of the other roads it is stated they are badly equipped with bridges and snow ploughing appliances, are poorly maintained and have poor rolling stock. Nevertheless they handle a good deal of traffic and there has been a very large increase in both freight and passenger business in the last five years.



### Test For Astigmatism.

The following is a simple and easily accurate method of determining whether one's eyes are astigmatic or not:—

"At a distance of three feet, each of the four small squares in the figure above, should be seen equally black and distinct. If any of the squares stand out more prominently than others, Astigmatism is indicated. Test each eye separately by covering first one and then the other.

Astigmatism, which is due to irregularity in the curvature of the refracting surfaces is one of the most common as well as one of the most difficult troubles to accurately correct.

Our methods of examination are ACCURATE and CERTAIN, which act is demonstrated by the satisfactory results obtained in almost every case.

If not satisfied we want to have a chance to help you.

G. F. HUTCHESON, JEWELLER—OPTICIAN

## Meet me at the Always Easy Store

### STANLEY BROS.

#### Now Don't Court Grip or Pneumonia, or Wear a Hand me Down When We Can Sell you a Ladies' or Misses' Coat

Great Discount Sale Continues

At the Always Busy Store

Misses' coat of excellent heavy cheviot, full box back, double breasted regular \$4.50 Sale price \$3.00

Misses' coat of heavy Scotch tweed, nicely trimmed, well made and finished. Regular price \$5.00 Sale price \$3.35

Gir's Coats \$2.15 for \$1.45. \$2.25 for \$1.50. \$3.50 for \$2.35.

Ladies' Coats heavy fancy cheviot, box back, half lined. Regular \$10.50 Sale price \$7.00

All others in stock at the same discount.

## Stanley Bros.

### Don't Freeze

when you can get hot drinks at any hour except while you sleep at my popular restaurant.

### Hot Chicken Pies

in abundance just the thing to warm you up and make you feel good and strong, during this changeable weather.

E. J. DESROCHES.

## SKATES!

Are you in need of a new pair? If so call and see what we have in spring and hockey also a full line of hockey sticks.

S. W. CRABBE Hardware, Paint and Oils.

dmwlmf

## WONDERLAND TONIGHT

Miss Viola Wentworth Singing and Dancing Sourette will appear all this week.

### PICTURES Serpentine Dance

A most beautifully colored film.

### Air Ship Thieves

How two clever thieves make use of an umbrella and what happened to the cop who followed.

### The Pirates

A thrilling tale of love, a villain, an abduction, a sea fight and the rescue. One of the best films ever shown.

### The Grateful Dog

Another of those touching stories of child life and the gratitude of dumb animals.

### The Beauty Doctor

This is a most amazing and laughable picture.

### Illustrated Song 'I Can't Find Another Girl Like you'

by Mr. Harney.

### Change of Pictures Monday, Wednesday and Friday

5c. Admission 5c. Amateur Night Every Friday

Applicants received any day during the week at the box office. 7-16df

### Cutting a Figure

In a cake walk is one thing, and fitting a figure in business is another. Just now we are cutting clothes and making them up in the swiftest manner.

If you care about your clothes don't pass us by your choice. If you don't, will be sorry.

Advice given free and clothes given for very little more.

### McDonald & Perry,

The Nobby Tailors 173 St. George St.

## INTERCOLONIAL RAILWAY

Travel by Your Own Line to Quebec, Montreal and All Points West

### Canada's Famous Train The Maritime Express

Is unsurpassed in the excellence of its Dining Car Service and Sleeping Car Accommodations.

For tickets, time tables and all information apply to Superintendent, N.B. Island Railway, Charlottetown

### Dominion Atlantic Railway

and Steamship Lines to Boston via Yarmouth

The popular East Line between Eastern Nova Scotia and Boston via Yarmouth, Jct., and Halifax EXPRESS TRAINS leave Halifax daily except Sundays, at 7.25 a.m. for Digby and Yarmouth making connection at Yarmouth for Boston.

MIDLAND DIVISION. Trains of the Midland Division leave Windsor daily except Sundays for Truro at 7.40 a.m. and 6.15 p.m. and from Truro for Windsor at 6.40 a.m. and 3.15 p.m. connecting Truro with trains of the Intercolonial Railway at Windsor with Express trains to and from Halifax for Yarmouth.

PRINCE ARTHUR. The fastest and finest steamer plying between the Maritime Provinces and Boston. Leave Yarmouth for Boston Wednesday and Saturday on arrival of Express Train from Halifax. Returning leave Long Wharf, Boston, Tuesday and Friday. Passengers arriving in Halifax next day at 6 p.m. by Express Train.

For further information, reservation of State-rooms, etc., write or telegraph to PARKER, Actg. Gen. Pass. Agt. Kentville Nova Scotia. Hdrwfr. P. GIFFKINS General Manager

### Only "Shells"

Lawyer Thornton is examining into the affairs of his late client. He finds that his life assurance policies are only "shells". They were all mortgaged to the money-lenders for advances used in speculation. There is, therefore, nothing left for the dead man's family. A very odd case, remarked lawyer Thornton, which the poor fellow had carried a policy in the L.O. Foresters; that Order would not have allowed him to mortgage it and his family would now be able to enjoy it.

## Card

To the Electors of Ward Three.—At the request of a number of the electors of Ward Three, I have consented to contest the Ward at the coming Civic Election.

If elected I will work for the best interests of Ward Three and the City in general. I take this opportunity to ask the electors of the ward for their support.

THOMAS CAMPBELL, Richmond St.

D. NICHOLSON