

# JULY BARGAINS!



All summer goods must go. We are bound that we will not keep this summer's goods till next summer. If price is any object to you now is your time to buy straw and linen hats, Ladies' Sailors, Prints, Underclothing, Light Coat and Vest, and lots of other lines.

No place like Prowse Bros for bargains during July the hot month. Cool goods must go in order to give comfort to our many customers.

## PROWSE BROS.

THE WONDERFUL CHEAP MEN.



### A MODEL \$3,000 HOUSE.

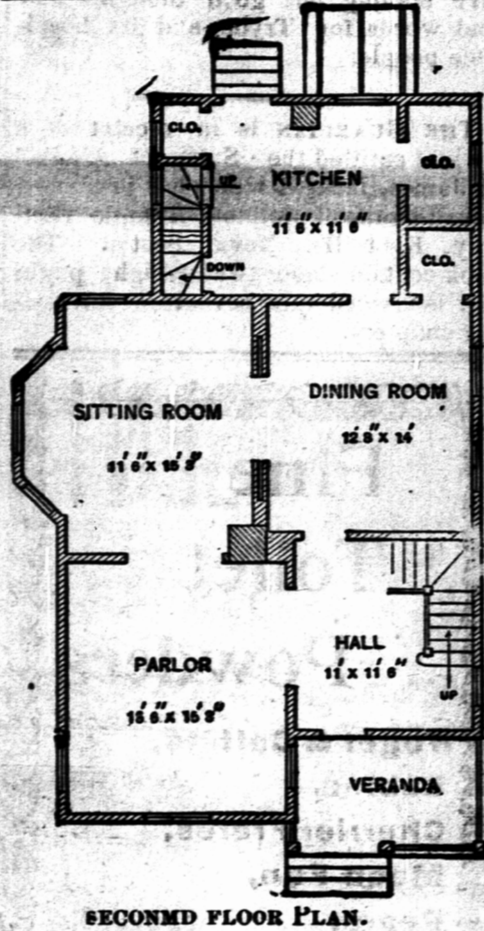
(Copyright, 1899, by Charles Willard Leighton, Architect, N. Y. City.) This is the tenth and last in the series of Illustrated Architectural Articles now running in our daily edition, prepared especially for us by the well-known architect, Mr. Charles Willard Leighton, who will be glad to furnish our readers any further information desired about architecture in general, illustrating these articles in particular. Address him at his office, 203 Broadway, N. Y. City.

We invite this week a careful study of the floor plans of the design accompanying this article as it is one of our special prize designs. The first floor

through the halls if the staircase was placed under the hall staircase to the second story. The chimney run down to the cellar and steam or a hot air furnace used to heat the house. The flue for the furnace being larger than an ordinary flue is to be lined as it makes a more perfect job and the expense is insignificant when compared to the increased grain over the ordinary flue and diminishes the chance of fire caused by a defective flue, sometimes destroying the whole house.

The plan of the first floor is to give as large rooms as possible and portiere and sliding door openings are given between the principal rooms. The

the staircase as well as one at the platform where the staircase turns. The parlor is nearly square and may have an open fire place and the windows in this room are provided with stained glass transoms, main sash sliding up into what is commonly called a "box head" making a "box-head window". The veranda roof is a continuation of the roof proper, and the columns are boxed and fluted and have a neat moulded cap.



On examination of the second floor plan we find five bed rooms and a bath room. The smaller bed room in the front may be used for a play room or sewing room as desired. All rooms are provided with ample closet rooms except the rear one and this could be easily altered by diminishing the size of the closet for bed room marked 10 x 14' and of the linen closet in the hall and still not after the size of either of the rooms or the hall. The sitting room bay is carried up to the second story and is somewhat larger. All the bed rooms are planned to give as much accommodation, light and ventilation as possible. The lighting of the passage is accomplished by placing transoms over all bed rooms and bath rooms door. The room previously stated as being used as a play room or sewing room is lighted by an elliptical and dormer windows, the former being glazed with stained glass.

All interior woodwork is as given in the technical description accompanying this article but may be changed to suit the wishes of the owner. The exterior finish of the first story is of clapboards laid 4 1/2 inches to the weather and joints lapped 1 1/2 inches, with corner boards at the end of the house and all joints 4 1/2 x 1 1/2" stuff. The entire second story, including, roofs and dormers is shingled, all shingling and clapboards to be backed up with one 1" x 6" rough hemlock boards upon which is placed a layer of building paper well lapped and nailed. Especial care should be used in placing paper on boards, lapping paper well at joints and window casings thereby avoiding the entrance of cold air. The panels on second story are made of paper mache of neat design. For a technical description of this design see the following memorandum.

General Dimensions: Extreme Width, 28 ft., 9 ins.; depth, not including veranda or porch, 44 ft. Heights of Stories: cellar, 7 ft.; first story, 9 ft.; second story 8 ft; 6 inches. Exterior Materials: Foundation, stone, first story, clapboards, walls above first and roof, shingles. Interior Finish: Hard white plaster. Main floors, N. C. pine. Trim, white wood grain-gilled and varnished. Stair-

### HERBERT IS WHIP

Son of England's Grand Old Man.

A TRUSTY LIBERAL

Appointed to Important Position for His Party in The House.

The announcement is made that Herbert Gladstone, son of "the Grand Old Man," has been appointed parliamentary whip by the Liberal party in the house of commons.

According to lexicographers, a whip, whose full title, by the way, is a whipper-in, is a member of parliament whose chief duty consists in looking after the interests of his party, and especially in securing the attendance of as many members as possible at important divisions. In other words, he plays the same kind of role in the parliamentary arena as another type of whipper-in plays in the hunting field. The one is in charge of a certain number of legislators and the other of a certain number of hounds, and the duty of each is to see that his charges attend to business and promptly do the tasks assigned to them. That a parliamentary office of this kind is no sinecure can be readily seen. Each political party has a chief whip, and the first duty of that gentleman is to see that none of the members of his party shirk their parliamentary duties. Whenever an important division is expected he must notify the members, and if he

case, ash. Kitchen and bath, wainscoted. Colors: Clapboards, silver gray. Trim lake white, Sashes, dark green.

All shingles left natural for weather stain.

Accommodations: The principal rooms etc., are shown by the floor plans. Cellar under whole house, with inside and outside entrance and concrete floor. Double sliding doors connect the dining room and sitting room.

Bath room, with full plumbing fixtures, in second story. Portable range and sink kitchen. Back staircase from cellar to attic. Linen closet in second story hall. Attic floored for storage.

Cost: \$2,700, complete. The estimate is based on New York prices for materials and labor. In many sections of the country the cost should be less.

#### One Dose

Tells the story. When your head aches, and you feel bilious, constipated, and out of tune, with your stomach sour and no appetite, just buy a package of

#### Hood's Pills

And take a dose, from 1 to 4 pills. You will be surprised at how easily they will do their work, cure your headache and biliousness, rouse the liver and make you feel happy again. 25 cents. Sold by all medicine dealers.

sees any of them in or about the house he must keep a sharp watch over them until the division is called.

If he finds that some of the members cannot be present in order to vote, he must find pairs for them, since thus only can he guard against any loss through lack of their votes. Finally, whenever



HERBERT GLADSTONE.

of his own party and conveying a faithful impression of them to the party leader, in order that the latter may be able to judge how far he can count on the support of his whole party in any course which he may propose to take.

As to Mr. Herbert Gladstone's fitness for this arduous, yet eminently responsible position, there seems to be no question. A beau ideal whip should be endowed with great physical endurance, admirable tact and unlimited patience and persuasiveness, and his public career up to the present seems to show that the great commoner's son has no small share of these desirable qualities. He is not a very brilliant man; if he were, he might prove less efficient as a whip. He has a good fund of sterling common sense, and he does not lose his head on critical occasions. Fortunate for him is it that he rarely suffers his serenity to be disturbed, since only a man of iron nerve and angelic temper can hope to deal successfully with a parliamentary party all the members of which are of all ages and all temperaments. To the uninitiated it may seem an easy matter to secure the attendance of all these men at an important division, but the habits of Westminster know well that it is no light task, and many a good story they tell of the frantic efforts made by whips to hunt up truant members, and of the laughable jokes played by members on zealous whips.

"Every well man hath his ill day." When "a bit off" or when seriously ill you should take Hood's Sarsaparilla and get well."

### UNIVERSITY OF MT. ALLISON COLLEGE.

SACKVILLE, N. B.

Annual Session, 1899-1900, will open on September 21st. Send for Calendar and write for additional information if needed.

Educational facilities unaffected by late fire. It is expected that the new Student Home, already in course of erection, will be ready for complete occupation at the beginning of the second term in January, 1900, and it is hoped, for partial use at the opening in September. Comfortable residential accommodation and board will be provided from the beginning. Students proposing to enter are requested to give early notice.

D. ALLISON, LL. D.,

Mount Allison, June 29th, 1899—July 13th 21 President.

### FOR BOSTON

BY THE INTERNATIONAL S.S. COY



Commencing July 5th, the Steamship "ST. CROIX" will resume the

### POPULAR DIRECT TRIPS TO BOSTON!

Leaving St. John every WEDNESDAY and SATURDAY, at 5.30 p. m., arrive in Boston about noon next day.

Charlottetown to Boston About 30 Hours,

Summerside to Boston About 28 Hours.

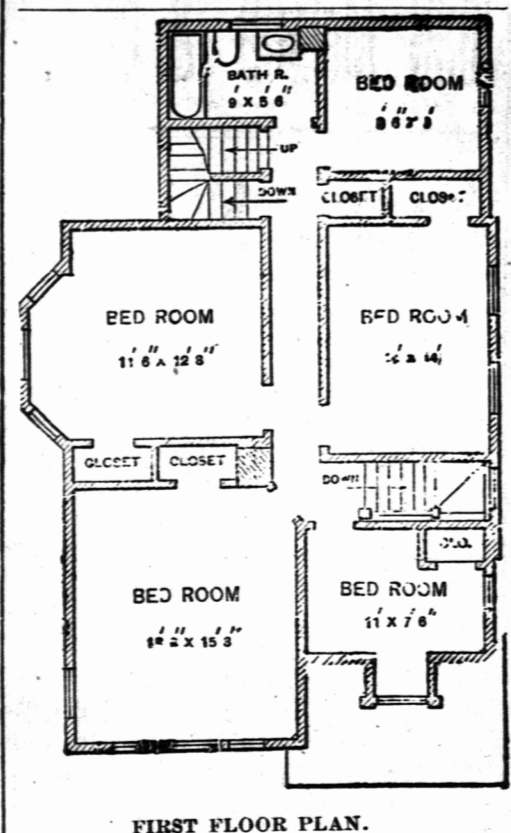
ROUTE 1.—Leave any point on the P. E. I. Railway by morning train Wednesday or Saturday, reach St. John, via Summerside and Point Du Chene, at 5 p. m. Leave St. John, by Steamship "St. Croix," at 5.30 p. m. direct for Boston. ROUTE 2.—Leave the Island on Tuesday or Thursday, reach St. John same evening, and connect with Wednesday and Friday morning steamers for Boston, via the Coast Service.

Send for Folder and information to nearest ticket agent, or to C. E. LAEHLER, Agent for St. John, N. B. June 5th 99

gives us a parlor, sitting room or library, dining room and kitchen, with a hall about 12 foot square. The veranda may be enlarged and extended either at the side or front of the house. The second floor gives us five bed rooms and a bath, all large light rooms of full height to ceilings with the exception of the small bed room marked 11' x 7'-6" in front of hall which room, however, is ample in size and well lighted for a small bed room.

The walls of foundation are of rough stone (filled) laid in its natural state in good cement mortar. Footings may be omitted if the soil permits as the width of the wall are too wide for any kind of setting. The cellar may be reached by a stairway from the rear thus doing away with the running

sitting room has a large bay window as well as a window at the side. The opening between the sitting room and the dining room is provided with sliding doors. The portiere openings may be provided with corbels placed about one foot from the top and grill filled in above. The kitchen has large closet room and a separate staircase to the



second story. The closet in the dining room might be used for an entrance to the kitchen, closing up present entrance obviating the direct view to the kitchen. The dining room has good large windows which when open in warm weather (with those in the sitting room) make a good circulation of air. The entrance hall is about square and well lighted by a window at the bottom of

SEALED TENDERS addressed to the undersigned and endorsed "Tender for Supplying Coal for the Dominion Buildings," will be received at this office until Friday, 4th August next, for the supply of Coal for the Buildings throughout the Dominion. Specifications can be seen and forms of tender obtained, at this office, where all necessary information can be had on application. Persons tendering are notified that tenders will not be considered unless made on the printed form supplied, and signed with their actual signatures. Each tender must be accompanied by an accepted bank cheque, made payable to the order of the Honorable the Minister of Public Works, EQUAL TO TEN PER CENT OF AMOUNT OF THE TENDER, which will be forfeited if the party declines to enter into a contract when called upon to do so, or if he fails to complete the work contracted for. If the tender be not accepted, the cheque will be returned. The department does not bind itself to accept the lowest or any tender. By order, E. F. E. ROY, Secretary.

Department of Public Works, Ottawa, July 31st, 1899. Newspapers inserting this advertisement without authority from the Department will not be paid for it. July 1st 99