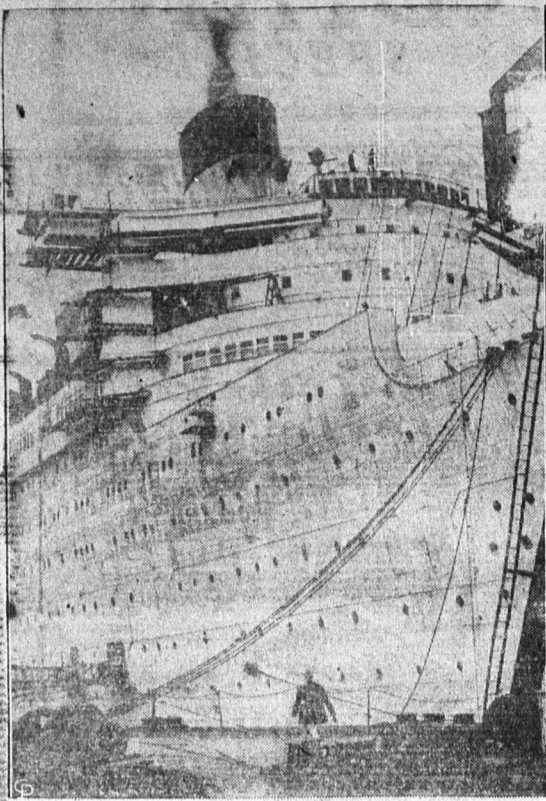


First Smoke Issues From Liner Funnel



Getting ready for her first trial run, expected early in the new year, the giant new Cunard liner the Queen Mary is shown here as the first smoke issued from her funnel during furnace and engine tests.

Empire Countries Still Greatest Market U.S.A.

Latest trade returns for the United States covering the period January to June this year, show Empire countries still far in the lead, as regards exports. Great Britain took goods to the value of \$159,830,000, or 15.6 per cent of the total exports, with Canada a close second, \$158,529,000, or 15.5 per cent of the total, according to the Industrial Department of the Canadian National Railways. Japan is the next best customer with \$92,327,500, or 9.1 per cent, followed by France with \$49,166,000 (4.9 per cent); Germany \$33,671,000, Italy \$33,292,000, or 3.3 per cent; Mexico \$32,731,000 (3.2 per cent); Cuba \$28,541,000 (2.8 per cent); Belgium \$26,819,000 (2.6 per cent); Philippine Islands \$25,748,000 (2.5 per cent); Holland \$24,344,000 (2.4 per cent); Argentina \$23,668,000 (2.3 per cent); China \$22,699,000 (2.2 per cent). Of other Empire countries, Australia took \$27,249,000 (2.7 per cent); British South Africa \$24,899,000 (2.4 per cent), or a total for Empire countries of \$370,557,000. Raw cotton was the leading export with automobile parts and accessories a strong second. There was a heavy export of scrap iron and steel, chiefly to Japan, Italy and Great Britain. Canada supplied goods to the United States to the value of \$130,105,000, or 13.2 per cent of the total imports, Great Britain \$69,204,000 (7 per cent); British Malaya \$68,799,000 (7 per cent); Japan \$68,259,000 (6.9 per cent); Cuba \$56,808,000 (5.8 per cent); Philippine Islands \$50,785,000 (5.2 per cent); Brazil \$47,395,000 (4.8 per cent); Germany \$36,817,000 (3.7 per cent); Argentina \$30,476,000 (3.1 per cent); China \$30,630,000 (3.1 per cent); British India \$29,562,000 (3.0 per cent); France \$27,472,000 (2.8 per cent); Dutch East Indies \$26,047,000 (2.6 per cent); Colombia \$25,288,000 (2.6 per cent); Mexico \$22,358,000 (2.3 per cent); 56.1 per cent of the imports were agricultural products and there were heavy imports of foodstuffs. Newsprint imports exceeded the

five-year average 1930-34, by 10.7 per cent. Total exports decreased by 1.2 per cent. Total exports decreased by 1.2 per cent as compared with the same period last year, while imports increased 18.4 per cent.

Economic Phases of Rehabilitation Pro.

A comprehensive study of land utilization in Saskatchewan and Alberta is being conducted as a part of the Prairie Farm Rehabilitation programme inaugurated by the Dominion Government. The Economics Branch of the Dominion Department of Agriculture is responsible for the project which is being carried on in Saskatchewan in cooperation with the Department of Farm Management of the University of Saskatchewan. In Alberta, the Provincial Department of Agriculture is actively assisting in the study. Joseph Coker, Chief of the Farm Management Division and Assistant Commissioner who is supervising the Dominion Government's participation in this undertaking, has just returned to Ottawa, and reports that field work for this year is already completed. Detailed information has been secured from 350 farmers in seven municipalities in South Western Saskatchewan, including such points as Chaplin, Coderre, Shamrock, Gravelbourg, Lafleche, Wood Mountain and Glenworth. In Alberta, the area surveyed is in the south central part of the province and surrounds Vulcan, Lomond, Wheat Centre, Retlaw, Barrons, Carmangay and Champion. Five hundred and thirty-four farmers in this district have cooperated in this study. In addition to data obtained from farms still in operation, considerable information has been secured regarding abandoned farms and municipal records are being used to provide data on municipal receipts, expenditures, tax arrears and assessment of farm properties.

In carrying on this project, economic analysis is being related to the soil survey which has been carried on in these provinces in previous years. Data are being secured on size of holdings, land tenure, crop yields and live stock production, farm receipts and expenses, cropping practices, live stock carrying capacity, indebtedness, operator's history, settlement of the area and farm abandonment. When these data have been analysed the information obtained should be a guide to the future policy of utilization land in these areas.

This study is the first of this kind to be carried on in Canada and it is anticipated that other areas will be included next year. Information regarding the economic returns on farms located on different soil types is essential to an appraisal of the efficiency of methods and practices adopted by farmers and the possibility of obtaining a satisfactory living from farms located in such areas, together with the practices which might enable farmers to continue to farm such lands. As yet, no conclusion can safely be drawn from observations made. It is recognized too, that any policy which might arise as a result of such studies would largely be put into effect by provincial governments, but before any policy is possible, facts regarding the situation are essential. The study is to

provide such information. In Saskatchewan, the work is being directed by Dr. W. Allan of the Department of Farm Management, University of Saskatchewan while in Alberta, G. H. Craig of the Economics Branch, Dominion De-

partment of Agriculture is in charge. Condition-figures for the late sown crops in Canada in 1935, including peas, beans, buckwheat, winter wheat, alfalfa, and sugar

beets, states the Dominion Bureau of Statistics indicate that yields will be slightly below average but above the level of 1934.

The preliminary estimate of the total production of wheat in Canada in 1935 at 290,541,000 bushels is 14,692,000 bushels, or 5.3 per cent, above the 1934 unrevised estimate, according to the Dominion Bureau of Statistics. The quality of the crop this year is definitely poorer than that of the 1934 crop.

The total number of pedigree certificates registered by the National Live Stock Records, approved by the Dominion Minister of Agriculture, for the month of September, 1935, was 5,492. Of that number 139 were horses; 2,369 cat-

tle; 1,561 sheep; 646 swine of which 547 were Yorkshire; 21 foxes; 750 dogs, and goats (five Toggenburg and one Nubian).

READ The Santa Pals appeal.

—BY GEORGE MCMANUS

POT PLANTS XMAS CHERRIES PRIMULAS CYCLOMEN AZALEAS PEPPER PLANTS 75c and up to \$3.50

CUT FLOWERS Roses, Large Chrysanthemums, Carnations, Daffodils. Book your cut flower orders early. We Deliver Anywhere at required time.

UPTOWN FLOWERS "Currie Block" Phone 772 175 Queen Street, Charlottetown. L3961-12-21-31

ANNUAL MEETING LIVE STOCK MARKETING BOARD will be held in the Board Rooms, City Building, Charlottetown, on Friday, afternoon, December 27th, at 2 o'clock. A continuation meeting will be held same place in the evening at 7.30, at which an open discussion will take place with respect to live stock production and marketing. Every farmer genuinely interested in this problem is cordially invited. By Order of Board of Directors. LIVESTOCK MARKETING BOARD.



To the thousands and thousands of women of Ch'town who have been worried about selecting the right—

Christmas Gifts for Men!

We've had 54 years' experience helping women with their gift problem . . . let us help you!

During the 54 years that we have been in business, we have gained a fine insight into this problem of what to give him! Take advantage of our experience in this matter! We'll keep you from overstepping the budget you have set for yourself and we'll solve your Christmas problem to your satisfaction . . . and what's of equal importance . . . to his satisfaction as well!

GLADSTONE BAGS

One of the most appropriate gifts you can give a man. In imitation morocco at \$7.75 and \$8.75 or Genuine Pigskin at \$25.00 in Black and Brown. \$7.75 to \$25.00

FLANNEL ROBES

Soft and warm imported flannels, tailored with a great deal of care and effort. In plain colors and stripes. Several popular styles. Blues, maroons, greens and tans. \$8.50

OPEN EVENINGS



PAJAMAS—Soft fabrics, madrases, broadcloths, soisettes in ziddy coat, lounging and russian blouse (2) styles. Exceptional values at \$2.50

GLOVES — Popular pigskins, mochas, capes and bucks either lined or unlined. In several new shades. As high as \$5.00. A \$1.75 Feature value at

HANDKERCHIEFS — Men's Linen Handkerchiefs, White, Hemstitched Borders, Initialed corners . . . 25c

SHIRTS—Either neckback or collar attached. Freshrun and fast dyed fabrics, full cut and made with meticulous care. All colors and patterns, plenty of \$1.95 plain whites

NECKWEAR — Popular wools, boucles and rabbit's hair as well as satins, silks, repps, twills and others. All handmade. Not a "bad" pattern in our entire \$1.00 selection

HOSIERY—Silks, wools, silk and wool mixtures and rayon mixtures in plain colors, patterns, stripes and checks. Our finest at \$1.00 pair. 35c Others at

MUFFLERS — Wool reefers are outstanding favorites this year. We have plenty of them. We have silks and crocheted mufflers, too. A fine selection up to \$3.00 A \$2.00 fine selection at

SWEATERS—Pure wool, in slip-over and coat style with button or zipper front, or pullovers with half-zip fronts. Plain colors, squares and checks. Sports \$3.00 backs, too. Up to \$5.00

PROWSE BROS LTD.

MAIL ORDERS GIVEN PROMPT AND CAREFUL ATTENTION

BRINGING UP FATHER

