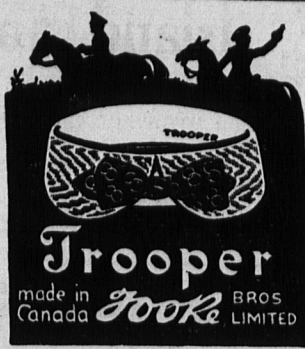


Exhibition Week
 Stop At
COOK'S
 FOR YOUR PHOTO



Exhibition Week
 Visit our Studio and have an up-to-date Photo taken for your friends.

Bayer Photo Studio
 117 Grafton Street
 Opposite Post Office

A. E. Lyon

Photo Studio
 Specialty in Groups, College, Society and Family
 Work unexcelled.

Moderate Prices.
 Amateur's work given personal attention
 107 Queen St. Ch' Town Phone 687

Eye Aid.

Just how much is required must be accurately measured. Too little would only partly relieve the trouble. Too much would injure the eyes. We use the best modern optical appliances, absolutely correcting optical defects and guarantee satisfaction.

H. J. MABON

Druggist & Optician,
 Souris, P. E. Island

The Eastern Guardian

..*IT PAYS to buy in this Province

..*CARL McDONALD is Guardian Representative for Souris.

..*T GORDON IVES is Guardian Representative for Souris.

EASTERN PERSONALS

..*Mr. John Turnbull, Souris, left for the Magdalen Islands where he will spend his vacation.*

..*Rev. E. E. Styles, Souris, is at present spending a well earned holiday in Montague the guest of Rev. H. and Mrs. Miller.*

..*Misses Flora MacLellan and Mary MacDonald, both of Red Point, left on Tuesday morning en route to the United States.*

..*Misses Josie MacIntyre and Annie MacPhee, Clear Spring, are spending a few days with friends in Souris.*

..*Miss Pansy McDonald, Milliner, Summerside, has returned to Souris and taken up her duties with J. J. Hughes & Co.*

..*Miss Anna McDonald, daughter of Mr. D. P. McDonald, Souris, leaves for Boston on Thursday morning to visit friends.*

..*Miss Alice Peters, who has been in the employ of W. B. Leard for the past few years leaves Thursday morning for the Hub.*

..*Capt. Nelson, who has resided in Souris for the past year, intends removing to Gloucester in a few days.*

..*Miss May Peters who has been spending the summer visiting her parents in Rollo Bay, leaves on return Thursday morning for Boston, where she has been for the past five years.*

..*Mr. Emerson Warren, Principal of Souris High School, left for Charlottetown on Tuesday morning to attend the Convention of teachers to be held there.*

..*Mr. J. A. MacPhee, Georgetown, was a passenger to Souris on Monday evening where he will spend a few days before rejoining the P. E. Island Heavy Battery of which he is a member.*

..*ONE CENT per word each insertion for advertising in this column. Cash must accompany order.

..*The following are registered at the Cox Hotel, Souris:— M. H. Hewson, Toronto; Hy. Thompson, Rock Island; G. S. Gould, Montreal; T. M. Redding, St. John; C. H. Nelson, Charlottetown; M. D. Morrison, Annapolis; Jas T. Durno, St. John; J. A. MacPhee, Georgetown.*

..*MINISTER WELL LIKED.— That the sermon delivered by the Rev. Hugh Miller of Montague in the South Methodist Church last Sunday evening to a very large and attentive congregation was thoroughly appreciated, is in evidence since by the many words of praise from those who had the pleasure of hearing him. Declaring that his next supply at that church will not be overlooked.

THE MARKETS

CH'TOWN MARKETS

Butter per lb.	23 to 28
Fowl per lb	10
Chickens	14 to 16
Hay, pressed	\$14.00 to \$15.00
Buckwheat	75 to 90
Wheat, per bus.	\$1.00 to 1.25
Oats, white	65 to 70
Oats, black	60
Eggs, doz.	22
Butter lb. (creamery)	27 to 28
Tub, butter per lb.	22
Potatoes, per bus, new	40
Beef, per lb. retail	10 to 12
Blackberries (per box)	12
Blueberries, per qt.	7
Apples per dozen	6 to 9
Wool, per lb.	25 to 40

S'SIDE MARKETS

Wheat, bus.	\$1.00 to 1.25
Wool, lb.	26 to 40
Eggs, doz.	22
Hay, pressed	10.00 to 13.00
Hides, lb.	15
Oatmeal, per 100	3.50
Oats, (white) bus.	65 to 90
Barley, bus.	65 to 90
Buckwheat	1.25
Butter, lb. (dairy)	21 to 23
Butter lb. (creamery)	28
Oats (black) bus.	67

CHICAGO MARKETS

(Special to The Guardian)
 CHICAGO, Sept. 20.—Wheat, No. 2 red, \$1.08 to \$1.10; No. 3, red, \$1.04 to \$1.06; No. 4, red, 95c. to \$1.02; No. 2, hard, \$1.09 1/2 to \$1.10 1/2.
 Corn, No. 2 yellow, 72 1/4 to 74c. Others nominal.
 Oats, No. 3 white 33 1/2 to 34 1/2c. Standard 38 1/2 to 38 3/4c.
 Rye, No. 2, 95c.
 Barley, 50 to 57c.
 Timothy, \$6.00 to \$8.00.
 Clover, \$12.00 to \$16.00.
 Pork \$12.02.
 Lard \$7.85.
 Ribs \$7.37 to \$8.12.

HALLAMS WEEKLY MARKET REPORT HIDES, SKINS, WOOL, JUNK

Toronto, Canada, Sept. 15th, 1915

WOOL quotations are unchanged, small quantities are still coming to market, but the bulk of the clip has already passed from the collectors hands. Washed fleece wool as to quality 40 to 44c. per lb. Washed selections (burry, cotted, chaffy, etc.) 33 to 35c. Unwashed fleece as to quality 30 to 34c.
 Tanners are buying on a hand to mouth basis owing to a dull leather market. City Butcher Hides green flat 18c. per lb. Country Hides, flat cured, 17 to 18c. per lb. Part cured, 16 to 16 1/2c. per lb.

CALFSKINS are moving slowly at prevailing quotations. City skins green, flat, 15c. per lb. Country, cured, 18 to 19c. per lb. Part cured, 17 to 18c. per lb. according to condition and take off Deacons or Bob Calf 75c. to \$1.10 each.

HORSEHIDES are quiet as ever with unchanged prices. City take off \$4.00 to \$4.50. Country take off No. 1, \$3.75 to \$4.25. No. 2, \$2.25 to \$3.00.

SHEEPSKINS are steady to firm, there is a good demand for late take

KING'S COUNTY INDUSTRIAL EXHIBITION AT GEORGETOWN

WEDNESDAY SEPT. 29, 1915
 Grand Display of Exhibits
 Liberal Prizes in all Departments
 Lowest Excursion Railway Rates

The Ladies of the Red Cross Society will serve Hot Lunch on the grounds at 25 cents.

25 Cents Admits to All Departments

Articles for Exhibition will be received at the Drill Shed, from Monday, Sept 27th, at 10 o'clock, a. m. until Tuesday, September 28th, at 10 a. m.

Entries for Horses will be received until Saturday, September 25th, and for other Live Stock until 10 o'clock a. m. on Wednesday, September 29th.

TRAIN ARRANGEMENTS

Excursion Return Tickets will be issued from Charlottetown Elmira, Souris, Mt. Stewart and intermediate stations to Georgetown, at one way first class fare by afternoon trains on September 28th, and by forenoon Trains on September 29th, good to return up to and on September 30th, 1915. Tickets at special reduced rates will be issued from Elmira, Souris, Cardigan, and intermediate stations, also from Charlottetown, Mt. Stewart and intermediate stations to Georgetown, by special trains on morning of Sept. 29th, good to return by special trains on same date, also from stations on Montague Branch by regular morning train on Sept. 29th, good to return by special train on same date

The following are the fares and the time of departure of trains

Station	Fare	Train Dep	Station	Fare	Train Dep
Elmira	\$1.15	6:50 a. m.	York	.80	8:55 a. m.
Souris	1.00	7:50	Suffolk	.75	9:03
New Zealand	1.00	8:10	Bedford	.70	9:11
Bear River	1.00	8:18	Tracadie	.65	9:20
St Charles	1.00	8:24	Pisquid	.60	9:47
Selkirk	1.00	8:31	Peake's	.45	10:00
St. Peters	.90	8:52	St. Teresa	.45	10:05
Morell	.75	9:12	Perth	.30	10:17
Lot 40	.70	9:18	Cardigan	.20	10:29
St. Andrew's	.60	9:37	Montague	.35	10:25 Reg
Mt. Stewart	.55	9:40	Brudenell	.30	10:35 Reg
Ch' town	1.00	8:30	Emmerson	.10	10:38 Reg
R. Junction	.90	8:45	Georgetown Arr	10:45	

Fare includes war tax

Returning the Special Train will leave Georgetown Elmira and Charlottetown at 5:45 p. m.

Passengers from the Montague Branch will go to Georgetown by the regular morning train, and will be returned to Montague by special train in the afternoon.

Live Stock from Elmira and Souris Branches coming to Mt Stewart by afternoon train on September 28th, will be forwarded to Georgetown by Express train same afternoon.

For Prize List and Information apply to the Secretary

W. W. Jenkins, Pres Andrew Lavers Sec
 sept 14 18 21 25 28
 Georgetown

Exhibition of Fall Shoes

Our stock is now complete in every department with the newest fall shoes.



Ladie's
 \$3.50 to \$5.00
Men's
 \$3.50 to \$6.00
 Wear a pair and be happy.

Alley & Co.
 135 Queen Street



Why Not Install That Pump Now

We carry a large stock and a complete variety. We supply either Black or Galvanized Pipe. We furnish Cylinders in Iron or Brass. We stock a regular line and can always supply extras. We have a competent fitter and every facility for turning out first class work. We guarantee satisfaction. All good reasons why your next PUMP order should be sent to:—

Poole & Thompson Ltd
 Montague



A Ticklish Proposition
 Our Coal is bound to tickle the whole family either directly or indirectly. Father is tickled by the nice even heat that fills the den, Mother by the quick, lasting heat that enables her to keep a good stock of goodies for the kiddies who are always tickled to get home to a pleasant fire and mother's BEST. Phone 111.
C. LYONS & CO.



Hard and Soft Coal
 Wholesale and Retail
 Now is the time to put in your Winter's Supply of Coal when roads are good, weather fine, and prices lowest.
 We have a good supply of Soft Coal in stock suitable for Domestic and Steam purposes and have fresh cargoes arriving almost daily.
 We have also a supply of Best Anthracite Coal in Egg, Stove and Chestnut sizes suitable for Furnaces and Base-burner Stoves.
 We shall be pleased to have your order for your requirements at any time.
 Schooners, for charter always in demand, and highest rates of freight paid.
BUNTAIN, BELL & CO.
 Phone, 404
 Selling Agents for Dominion Coal Co.,

off stock. City Lambskins and Shearings 75 to \$1.10. Country Lambskins and Shearings 65c. to \$1.00.
 ALLOW is dull, and an easier feeling prevails. City rendered sold in barrels, 6. Country stock, sold in barrels, No. 1, 6c. No. 2, 5 1/2 to 5 3/4. Cake No. 1, 6 1/2 to 7c. No. 2, 5 1/2 to 6c.
 HORSE HAIR is easy, the supply about equaling the demand. Farmer pedlar stock 33 to 55c. per lb.
 OLD RUBBERS, JUNK, ETC., are easy, with slight accumulations in the hands of dealers. Rubber Boots and Shoes according to trim 5 to 6c. Auto tires 3 to 5c. Bicycle tires 2 to 3c. Lead, heavy, 3 1/2 to 4 1/4c. Tea Lead 2 to 4 1/4c. Brass, heavy 7 to 8c. Light 5 to 7c. Copper, heavy 10 to 12c. Light 8 to 10c. Zinc 6 to 8c.

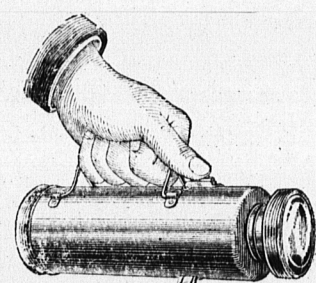
FURNITURE
 The new chair or table you want for the fall is here waiting your selection. Visit our furniture department, where exceptional bargains are in vogue for fair week. Full stock of new and handsome furniture at Paton's.
 9-20me31

Flashlights and Electrical Supplies
 On Display in Exhibition Building During Exhibition Week

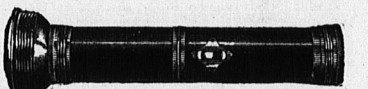
Electric flashlights are no longer a novelty, but a thoroughly practical and satisfactory medium for obtaining a quick, strong light, useful in a thousand and one emergencies. We are sole agents for the famous "Franco" products, which were awarded the Gold medal at the Panama-Pacific International Exhibition in San Francisco, 1915.

Buy one of these Flashlights at Exhibition Booth

The Franco Hand Electric Lanterns



This lantern has no projecting parts, the handles press against the sides, permitting it to be carried in the pocket. Uses any ordinary dry cell, and gives from six months' to one year's service from one battery at a cost of only...35c
 Black Finish, complete with Battery\$2.25 Ea.



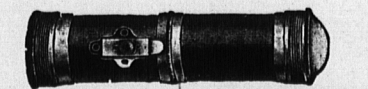
Tublar Flashlights with Tungsten Bulbs

No. 6781-1 1-4x5 inches. Vulcanized Fibre Case, complete.....\$1.10
 No. 6784, same as above, larger size\$1.35
 No. 6786-1 1-2x8 1-2 inches, Vulcanized case, complete\$1.35
 Renewal batteries for above 35 and 45 cents each.
 Renewal bulbs, 20 cents each.

The Franco Hand Lantern

To Replace the Dangerous Oil Lanterns

Brass Nickel Plated lantern to replace dangerous oil lanterns. Equipped with powerful battery, which will give ten hours steady or 20 hours intermittent service.
 No. 5008, complete with battery \$5.50
 Renewal battery 50 cents each.
 Renewal bulb 20 cents each.



No. 6764, Nickel plated case 1 1/2x6 1/2 inches Complete.....\$1.65
 No. 6788, Vulcanized Fibre case, 1 1/2x6 1/2, complete.....\$1.65
 No. 6789, same as above in larger size, complete.....\$1.90
 Batteries for above 35 and 45 cents each.
 Renewal bulbs twenty cents each.

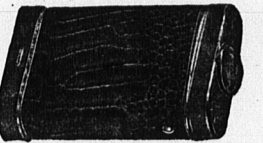
Revolver Flashlights

Most wonderful flashlight novelty. Exact reproduction of Automatic revolver. Black Japan Finish, complete.....\$1.65
 Renewal battery35c Ea
 Renewal bulb20c Ea

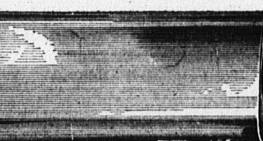
Sole Agents for "Franco" Flashlights and Batteries for P. E. Island

Queen Staet The Rogers Hardware Co Grafton Street
 LIMITED.

Vest and Coat Pocket Flashlights



No. 4725—paper covered, assorted colors, size 1x2 1-2x3 1-2 price complete only 75 cents each
 No. 4734—1x2 1-2x4 1-2 Black Finish, complete\$1.40
 No. 4730 Black Finish, 1x2 1-2x4 inches \$1.10
 No. 4715, same as above in Black Finish \$1.10
 No. 3425, Nickel plated finish, complete 85 cents each.
 No. 3429, same as above, larger size.....\$1.05
 No. 3435, Improved Nickel plated case, opening with hinge, complete\$1.10



Larger sizes, same as above from \$1.35 to 1.85
 No. 7440, 3x56, Nickel plated and mounted with lodge emblems and ornaments, prices from 1.00 to 1.50 each.

The Electric Bicycle Motor Cycle Lamps

4886—Bicycle Lamp constructed with Brass, highly nickel plated and polished. Price complete with battery.....\$2.85
 Renewal Battery.....35c ea
 Renewal Bulb.....20c ea
 4818—Motor Cycle Lamp, Black enamelled with silver plated Reflector 2 1/4 inches in diameter. Complete with Battery.....\$3.75
 Renewal battery for same50c ea
 Renewal bulb20c ea



The Fountain Pen Flashlight

Most Novel and up-to-date Flashlight on the market, being a combination of both practical light and novelty. Slightly larger than a fountain pen, with clip for fastening on pocket. In black or nickel plated finish complete.....\$1.10
 Renewal Battery.....35c ea
 Renewal Bulb.....20c ea

Electric Carriage and Buggy Lamps

For safe driving on poor country roads, these lamps are indispensable. Made with clamps for attaching to shaft of vehicle and will throw a strong and steady light.
 Nickel plated finish, complete with Battery\$4.80
 Renewal Battery for same.....65c ea
 Renewal Bulb.....27c ea