

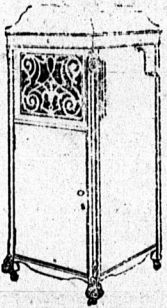
**THE COOK STUDIO**  
Home of Good  
Photography  
Phone 159-J

**XMAS**  
IS COMING CLOSE  
WHY WAIT?  
Send a Photo Taken by  
**BAYER**

**A. E. LYON**  
Photographs of all sizes, films to fit all size amateur cameras are received fresh every week.  
Moderate prices  
Personal attention to Amateur Photography  
Artistic Photography  
Charlottetown, P. E. I.



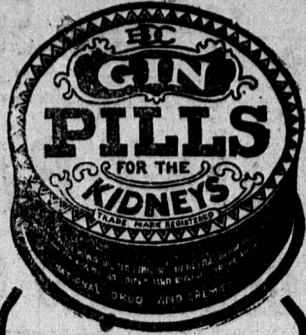
**WE CARRY  
EDISON  
PHONOGRAPHS**



Do you intend buying a phonograph this year? If so, call on us for demonstrations of the different models we have in stock.  
OR  
Write us for quotations, which will have our prompt attention. We sell them on the installment plan. Call or write today.  
**Carruthers & Parkman  
Limited**  
Wholesale and Retail  
Dealers in  
Drugs, Chemicals, Groceries,  
Boots and Shoes, Paints Etc.  
Montague, P. E. I.

**Eye Strain**

Eye Strain, most frequent source of waste of nerve power, is likewise most sure of prompt correction, if rightly treated.  
An eminent physician writes in the New York Medical Journal "I have yet to encounter a typical case of sick headache that was not associated with Eye Strain."  
Our own experience has proven how true this is. Our records show that hundreds having suffered for years from Eye Strain without knowing the cause, have sought and found relief through our examination, which proved beyond the possibility of a doubt that their eyes were the primary cause of all their trouble, and that a direct relationship existed between their eyes and the nervous system, and that a cure was effected simply by correcting the errors of refraction and muscles by means of glasses.  
Have your eyes examined by the newest scientific methods.  
**H. Mabon's**  
Optometrist and Prescription  
Druggist,  
MONTAGUE, P. E. I.  
Next Door Bank of Commerce



**Avoid Operations  
for Kidney Troubles  
GinPills  
FOR THE KIDNEYS**

go directly to the heart of the trouble, relieving pain quickly, dissolving stones and gravel, purifying the system and toning up the kidneys, the most vital organs in the body.  
Thousands of letters come to us every year bearing eloquent testimony to the great value of Gin Pills. Send for free sample, or get one from your druggist or dealer, 50c. with money-back guarantee.  
Address: The National Drug & Chemical Co. of Canada, Ltd., Toronto  
U.S. Address: Na-Dra-Co., Inc., 202 Main St., Buffalo, N.Y.

**DRIVING NAILS IN HARD PLACES**

In making repairs it is found necessary many times to drive nails in close quarters or in cramped places where they cannot be readily held with the hand to insure being driven straight.  
When such an emergency arises procure a short length of pipe, about 3/4 inch in diameter, and a slightly longer piece of rod of such diameter that it will slip loosely in the pipe. After dropping the nail into the pipe, place the pipe over the place where the nail is to be driven and slide the rod into the pipe back of the nail and drive the nail into place by hammering on the end of the rod.—Illustrated World.

**PROFESSIONAL CARDS**

- S. S. HESSIAN**  
Barrister, Solicitor  
Notary Public, etc.  
MONEY TO LOAN  
Montague, P. E. I.
- D. STEWART, K. C.**  
Barrister, Solicitor and  
Notary Public  
Newson Block, Charlottetown  
Branch Office, Georgetown  
Money to Loan on Real Estate
- Dr. K. W. McKinnon**  
VETERINAR / SURGEON  
Office, 139 Kent Street  
Opposite Morell Hotel  
Telephone 764
- McLEAN & McKINNON**  
Barristers Attorneys-at-law  
Office Royal Bank Building  
Charlottetown, P. E. I.
- MORSON & DUFFY**  
Barristers and Attorneys  
Solicitors for Royal Bank of Canada  
MONEY TO LOAN
- WARBURTON & SHAW**  
Barristers, Attorneys, Notary Public, Etc., Solicitors for Canada Bank Association Bank of Montreal, Canada, Permanent Mortgage Corporation.
- McLEOD & BENTLEY**  
W. E. Bentley, K. C.  
Barrister and Attorney-at-law  
MONEY TO LOAN  
Bank of N. S. Chambers



**DUTCH BULBS**

**DIRECT FROM HOLLAND**  
Our shipment of choice Flowering Bulbs have just arrived. All First Quality Bulbs, large flowering and in the most beautiful shades.  
**HYACINTHS**  
**TULIPS**  
**DAFFODILS**  
**NARCISSUS**  
**CROCUS ETC., ETC.**

Be sure and plant some of the beautiful Tall Stemmed "Darwin" Tulips We have them. Bulbs on sale in Bookstore.

**Carter & Co. Ltd**

**The Eastern Guardian**

**FOR SALE**, Berkshire boar. Henry McLaren, Montague. 1911-10-29M24  
..Mr. Leo McCormack, Big Pond, has an exceptionally good crop of potatoes and little or no rot.  
..**TWELVE POUNDS** beans \$1.00 on Dollar Day at Holman's Charlottetown Sample Rooms. 1888-10-28M31.E21  
..**DON'T FORGET THE BEAN** special in the basement of the Christian Church, Montague, Halloween night. 1893-10-28-M31pd.  
..**COLD BLAST LANTERNS** 79c; 12 lbs. beans \$1.00; 7 muskrat traps \$1.00; at Holman's Charlottetown Sample rooms on Dollar Day. 1889-10-28-M31eri  
..**CHOICE HOUSEHOLD** furniture sale at Montague, Friday, Oct. 31st at Mrs. Pearle Nelson's every thing goes, no reserve. 1912-10-29M31.  
..**BALTIC STARCH FACTORY** closed down for lack of potatoes, as patrons refused to sell at 60 cents per cwt.  
..**CHOICE HOUSEHOLD FURNITURE** SALE at Montague, Friday, Oct. 31st at Mrs. Pearle Nelson's, everything goes, no reserve. 1912-10-29M31.  
..**DON'T FORGET** the auction sale of Mrs. Pearle Nelson, Montague on Friday, Oct. 31st, at one o'clock of all her household furniture. Sale positive. 1921-10-29M31.

**RAPID TRANSIT**—Mr. Leo Gillis, Hay River, motored to Charlottetown, 48 miles, Tuesday morning, did his business in the city and returned to his home same evening, used to take two full days with a horse and rig.

**AUCTION SALES**—Mr. W. H. Keefe, Rollo Bay, held three successful sales as follows:—Fred Deagle's, Rollo Bay, last Friday; Mrs. John Brien's, Naufrage, Saturday, and William Longophy, New Zealand, Monday.

**FORTY YEARS AGO** Mr. Hugh McAulay, North Souris, started his carriage building establishment which he has personally conducted up to this time, year in year out in the same old stand and is still vigorous and progressive as ever.

**NORTH SHORE FARMERS** who get lots of help are purchasing manure spreaders. These machines make a splendid job of spreading sea manure, as help. Three horses are used. Where help manure was used this year the potato crop is good and little help supplies the potato so much needed by the potato.

**INKERMAN NOTES**—The farmers of this vicinity have completed their thrashing and potato digging, and are well advanced with their ploughing. Mr. John MacDonald reports a bumper crop of potatoes this season.—Mr. and Mrs. Wm. MacQuarie, Hampton made a business trip to Inkerman recently.—Mr. Lemuel Molyneux has been indisposed for the past week but is somewhat better.—Miss Scott, dressmaker has been more than busy due to scarcity of dressmakers this season.—Miss Eliza Stewart has returned home and intends spending the winter with her parents.—Mr. Angus MacDonald, Tryon was in Inkerman Friday.—Mr. Archie Anderson is erecting an up-to-date poultry house which when completed credit will be due him.—Miss Mary Molyneux went to Tryon Friday.—Mr. Walter Campbell, teacher, Inkerman has resumed his duties after spending his vacation with parents of Westmoreland.—Mr. Melville Molyneux lost a valuable horse recently, the animal stepped on a stake which severed a main artery and died instantly.—The many friends of Mr. George Craig are glad to see him out again after being confined to the house with a severe attack of lumbago.

The best Liver Pill. The action of the liver is easily disarranged. A sudden chill, undue exposure to the elements, over indulgence in some favorite food, excess in drinking are a part of the causes. But whatever may be the cause, Parmelee's Vegetable Pills can be relied upon as the best corrective that can be taken. They are the leading liver pills and they have no superiors among such preparations.

**Popularity of New Dictionary Grows**

Lawyer Praises Book — Money Well Spent He Declares.  
Appreciation of the offer of The New Universities Dictionary being made, by this paper to its readers is shown in the steady increase in the distribution. The popularity of the book has become more widespread, as those who were among the first to secure a copy have told their friends about the dictionary or have shown it to them. Each day the distributing clerks have been besieged by crowds of coupon-holders.  
Many comment on the work in terms of highest praise.  
"I never spent ninety-eight cents to better purpose in my life," a well-known lawyer declared. "I have long been wanting just such a dictionary. It is thoroughly up to date, gives a simple, accurate definition of a lot of new words, and the illustrations are both interesting and instructive. Its convenient size and practical style of binding further recommend it."  
The New Universities Dictionary was designed to serve as a guide to the correct use of today's English. It is accurate in its definitions and contains the latest and newest words whose general usage warrants their incorporation into a dictionary designed as this one was, primarily for everyday folks who want to speak and write the English language correctly and well.  
A new supply just received.

**HOLMAN'S CATALOG BRINGS THE STORE TO YOUR DOOR**



Make Your Home Re-Echo  
With Good Cheer and Happiness

**Now is the time to Choose Your Piano  
Early Choosing Means Easy Choosing  
--Absolute Satisfaction Assured**

The demand for good Pianos was never greater than right now — and the demand for Gerhard Heintzman and other Holman pianos is without precedent

As the season advances stocks will become cleaned up and deliveries slower and more uncertain. NOW IS THE TIME TO CHOOSE.

Labor troubles at the factories, aggravated by repeated strikes will make it difficult to supply the demand. NOW IS THE TIME TO CHOOSE.

The scarcity of highest quality lumber and materials necessary for the manufacture of pianos, coupled with constantly increasing prices of such materials, make it a matter of economy for you to CHOOSE YOUR PIANO NOW.

Fill in the below coupon for full information. Don't delay--act quickly--mail it today.

**R. T. Holman Limited**  
Charlottetown and Summerside

**R. T. HOLMAN LTD.**  
Summerside, P. E. I.  
Gentlemen,  
Please mail Piano Catalogs and full information. I have marked X to indicate the plan I prefer.  
— Installation Payments  
— Cash with order  
Yours truly,  
Name .....  
Address .....

**WHOLESALE**

- 100 TONS BAR IRON
- 10 TONS SLEIGH SHOE STEEL
- 3000 KEGS WIRE NAILS
- 400 BOXES HORSE NAILS
- 50,000 pounds SHEET IRON
- 400 KEGS HORSE SHOES
- 500 BOXES WINDOW GLASS
- 30 TONS BARB WIRE
- 25 TONS COILED WIRE
- 100 DOZEN LANTERNS
- 30,000 RODS DOMINION FENCING
- 100 KEGS FENCE STAPLES
- 1 CAR "JAMIESON'S" PAINT
- 400 DOZEN HICKORY AXE HANDLES
- 100 DOZEN DIAMOND EDGE AXES
- 600 SQUARES "ROGERS" ROOFING
- 250 SQUARES "RUBBEROID" ROOFING
- 1000 ROLLS SHEATHING PAPER
- 100,000 FEET BEAVER BOARD

Our prices on the above mentioned and all kinds of Shelf Hardware guaranteed as low in price as any jobbing house in Canada, and in many cases much lower.  
Goods shipped the day order is received. Our organization is perfect, which is the reason our business has increased 300 percent. during the past eight years.

WE CLOSE DAILY AT 5.30

**The Rogers Hardware Co**  
LIMITED.  
WHOLESALE AND RETAIL

STREET QUEEN

GRAFTON STREET