

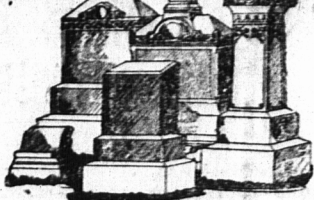
DAIRYMEN!

Boiler Repairs, Boiler Testing,
Grates for your Boilers,
Steam Fittings and Engine Repairs.

CHARLOTTETOWN FOUNDRY and MACHINE Co. Ltd.

NEW FOUNDRY

MARBLE AND GRANITE
MONUMENTS.



Monuments and Head
stones in Marble,
Granite and Freestone.

All the latest designs.
Prompt attention given to all
orders. Satisfaction guaranteed.
Call or write for designs and
prices.

CHANDLER & BELL, KENT STREET,
CHARLOTTETOWN.

1907 QUEBEC STEAMSHIP CO., LIMITED

Proposed sailings of S.S. "CAMPANA" between Montreal and Charlottetown calling at Quebec, Father Point, Gaspe Basin, Pt. St. Peter, Percé, Cape Cove, Grand River, Pictou and Summerside.
From Montreal Monday at 2 P.M.
Monday August 12
Monday August 26
Monday September 9
Monday September 23
Monday October 7
Monday October 21
Monday November 4

CARVELL BROS., Agent

GUARDIAN BUSINESS LOCALS

MORNING DAILY OR RURAL DAILY PER WORD (six words to each line) one cent for one insertion, two cents for three insertions, four cents a week, nine cents for three weeks, twelve cents a month.
Double Rates for Black Type - Minimum Charge 15 cents With Order.
Yearly rates in Morning Daily or Rural Daily 50 cents per word. Six months 35 cents per word. Three months 25 cents per word.
Ten (10) per cent Discount on Above Rates For Cash With Order.

Sponges for the toilet, bath and washroom a large stock of all kinds to select from, prices ranging from 5 cents to \$1.50. Also a nice line of rubber sponges in all sizes. Geo. E. Hughes, Apothecaries Hall.

DOLLARS ARE STRENGTHED. Every dollar you spend with us during our great sale brings from \$1.25 to \$1.50 in desirable dry goods of every sort. Sale ends in six days—ends Aug 24th. Prowse Bros. Ltd. 8-17dr21

SATURDAY, AUG. 24 positively the last day of our great discount sale, come—don't delay—our entire stock awaits you at discounts from 20 per cent to 50 per cent. Everything goes, Dress goods, clothing, men's wear, housefurnishings, footwear, etc., etc. It's your opportunity. Everybody is talking about the splendid bargains. Prowse Bros. Ltd. 8-17dr21

Summer Shirts and underclothing at a discount of 1-3 for the balance of the month. If you want an extra shirt or suit of underclothing to finish out the season now is the time to buy. H. H. Brown, The Young Men's Man. 8-16dr61

GUARDIAN CLASSIFIED ADS.

FOR SALE—A lot of desirable residence at Mount Stewart. Apply to Wm. Pickett, Mount Stewart or A. W. Stens, Charlottetown. 7-18drnpd

WANTED—A young lady as clerk in a store, one with experience in the grocery business preferred. State experience, references and salary expected. Apply P. O. Box 571. 8-14drf

LOST—A silk umbrella with curved handle. Engraved "A. E. L." Apply at the Guardian office. 8-17dr1

LIVERY STABLES—WORTH'S LIVERY Stables high class single and double teams. Fine turnout for weddings and private parties. PHONE 52. 11dr

MALE HELP—WANTED—A young man to attend furnace. Apply to A. Dunham & Co. 8-16dr31

WANTED—A boy for general work about a house and stable. Must have recommendations. Apply to A. E. Inge, Charlottetown. 8-15drf

MILK VENDORS—PURE milk, unsketch, delivered in any part of the city. Our herd is healthy and does not require to be subjected to the tuberculin test which leaves unhealthy cows in the wake. We do not make butter or sell cream, our patrons get the benefit.—Wm. Miller, Marshfield. 8-14drf

FRESH milk and cream delivered daily in any part of the city. Lawford Dairy, A. S. McKee, Prop. 11dr7

MILK fresh from the cow, guaranteed pure, delivered daily in any part of the city. H. Kelly, Southport, 10-20dr13

HORSE SHOERS—HORSESHOING, all kinds, while you wait, at J. A. Henderson's, Boston St. 7-18drnpd

P. E. ISLAND LOCAL MARKETS

MONTAGUE MARKETS. Herring per bbl \$5.00 to \$6.00. Coal, per quintal \$3.75 to 4.00. Oats per bus. 50. Potatoes per bus. 20. Turnips per bus. 14. Eggs, per doz. 21. Butter per lb (creamery) 24. Butter per lb (dairy) 24. Butter per lb (creamery) \$18.00 to 20.00. Cheese per lb. 10. Hides per lb. 6. Bacon per lb. 60. Hay per ton, loose. \$16.00. Hay per lb (carriage) 7. Pork per lb (out ass) 8 to 8 1/2. Lamb per lb (carriage) 6 to 7. Wool per lb. 25 to 26. Callalinks per lb. 6.

SUMMERSIDE MARKETS. (Farmers Prices—Corrected Daily.) Barley per bus. 60 to 65. Beef (carcase) per lb. 5 to 5 1/2. Buckwheat 6 to 6 1/2. Butter per lb. 20 to 22. Alfalfa per lb. 10 to 9. Eggs per doz. 16 to 17. Hay pressed \$11.00 to 12. Straw pressed 25 to 40. Hides per lb. 6. Roller Mill Flour, per cwt. \$2.08 to 2.25. Oatmeal, per 100 lbs. \$2.85 to 3.00. Oats (black) per bus. 50. Oats (white) per bus. 50. Wheat per bus. \$1.10 to 1.10. Peas 8 to 8 1/2. Potatoes, per bus. 15 to 16. Turnips 15 to 16. Geese per lb. 10. Hake, per quintal 30.00. Haddock per quintal 30.00.

CHARLOTTETOWN MARKETS. (Corrected every Tuesday and Friday.) Beef (quarter) per lb. 9 to 1. Beef (small) per lb. 5 to 14. Mutton per lb. 8 to 12. Cattle Dressed 7 to 8. Butter fresh per lb. 21 to 23. Eggs 21. Flour per cwt (land) \$1.75 to 6.01. Oatmeal 3. Straw per cwt. 50. Chickens per pair. 85 to 75. Ducks per pair. 85 to 105. Cabbages each. 5 to 6. Hay new per cwt. 55 to 65. Oats, white per bus. 54. Oats, black per bus. 51. Pork per lb. 8 1/2 to 8 1/4. Lamb per lb. 12 to 11. Beef's bunch. 4 to 5. Cattle per bunch. 4 to 5. Potatoes per bus. 80 to 90.

WHY REMAIN THIN AND PALE? Pale people have pale blood. The stomach is weak, assimilation is poor and food is not changed into blood. The system is debilitated by an inefficient power which can be supplied by Ferrazone. It braces the appetite, digestion is stimulated, and you eat with satisfaction. It is the kind of nutriment your system requires. Vital life-giving blood that makes your cheeks, strength that defies weakness, spirit and ambition all come from Ferrazone. Nothing in the annals of medicine is more to build up and strengthen as Ferrazone. Try a 50c. box. Sold everywhere.

ADVERTISING IS BROAD. Advertising in itself means publicity and publicity is a very broad and comprehensive term. It does not mean simply a word whispered to a favored few. It is, rather, synonymous with a general, broadcast declaration, and the broader the scope of the announcement, the better the advertising. No occupation or desired lines can be reasonably regarded as wasted, nor can any form of expenditure to this end be adjudged extravagant. —American Medical Journal

Minard's Liniment. Take no other

EXCURSION BULLETIN S. S. CITY OF LONDON.

To Orwell Tuesdays at 3 p.m. Round trip 25c.
To Newport Thursdays at 3 p.m. Round trip 25c.
To East River ports Fridays at 3 p.m. Round trip 30c.
To West River ports Saturdays at 3 p.m. Round trip 25c.
To Boston, cold drinks, lunches, ice cream and fruits in season. Piano. Home early 7-18dr1

TAKE A HOLIDAY AND VISIT THE EXHIBITION

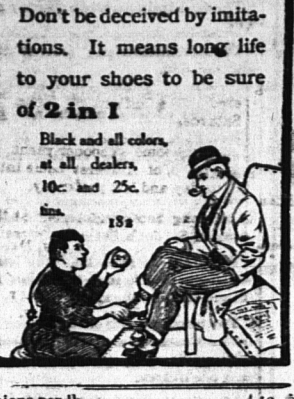
Halifax Sept. 25 to Oct. 3. \$20.000 IN PREMIUMS

Eligible and Amusement Combined. No Department will be slighted and every effort made to equal last year's Fair.

BALDWIN'S AIRSHIP will be a novel feature, the first to appear in the Provinces. For Entry-forms, and all information, write M. McF. HALL, Manager and Secy, Halifax 8-17dr19r1

Weavers Wanted. Girls to weave and to learn the business. There has been an increase of over 10 p.c. in wages paid while learning. Apply at once to COTTON MILLS, 7-18dr19r1

2 in 1 Shoe Polish



Don't be deceived by imitations. It means long life to your shoes to be sure of 2 in 1. Black and all colors, at all dealers, 10c and 25c. T. CRAIG, Manager, Charlottetown, P. E. I.

D & A CORSETS

CHAS. F. DAVISON, FUNERAL DIRECTOR AND EMBALMER. Office, Show Rooms and Residence, opposite Baptist Church. Equipment first class. All calls promptly attended to at any hour of the day or night. Telephone No. 129. 6-15dr1

FIRE INSURANCE

For rates in the P. E. Island Mutual Fire Insurance Companies on Farm Buildings, Churches, Mills, School Houses, Cheese Factories, Ware, Mills, Stores, Etc., apply to C. D. BELL, Pleasant Street, Charlottetown 1-231 wacw f.

MUMFORD BROS. Produce Commission Merchants

ARVILLE ST., HALIFAX, N. S. Personal attention given to the sales of Butter, Eggs, Hogs, Poultry, Fruit, Vegetables, etc. Proceeds of sales promptly marked and sent to application. Customers' interests protected. 1-18dr7

GEO. S. INMAN, Barrister and Attorney

Solicitor for the Canadian Bank of Commerce, Montreal, P. E. Island. MONEY TO LOAN. JOHN A. MATHESON, R. G. DENNIS & MACDONALD, Solicitors for the Royal Bank of Canada 24

Matheron & Macdonald BARRISTERS, SOLICITORS

W. A. O. MERSON, K. C., G. GAVAN, DUFFY Barristers and Attorneys. Brown's Block, Charlottetown, P. E. I. MONEY TO LOAN. Solicitors for the Royal Bank of Canada 24

G. I. MURPHY & Co., SYDNEY, C. B.

General Commission Merchants. Island Produce handled on commission. Prompt returns made. 4-15dr7r1

TRAVELLERS' GUIDE

S.S. City of London Eastern Steamship Co. INTERNATIONAL DIVISION Coast-Wise Service. Steamer leave St. John at 5:00 a.m. Monday, Wednesday and Fridays for Lunenburg, Eastport, Portland, and Boston. Monday by appointment. For Halifax, China Point, and Brantford on Tuesday at 8:00 p.m. For Capraud on Wednesday and Thursday at 3:00 p.m. For East River ports on Friday at 5:30 p.m. and 8:00 p.m. For West River ports on Saturday at 9:00 a.m. and 3:00 p.m. For freight and excursion rates and other information apply to T. CRAIG, Manager, Charlottetown, P. E. I.

INTERCOLONIAL RAILWAY

Travel by your own line and the service by THE OCEAN LIMITED. Will leave Montreal 7:30 a.m. Moncton 2:25 p.m. Will arrive Moncton 7:30 a.m. Montreal 2:25 p.m. Direct connections between Montreal, Western Ontario and Charlottetown. Through sleeping cars between Montreal and Moncton. Splendid scenery enroute. For further information apply to G. A. SHARP, Superintendent, P. E. Island Railway, General Passenger Department, Moncton, N. B. J. L. THOMSON, Ticket Agent, Charlottetown.

PLANT LINE

The Direct Route to BOSTON commencing June 25, Charlottetown to Boston via Lunenburg and Halifax Tuesdays and Fridays at noon. From Boston Tuesdays and Saturdays at noon. Passengers leaving Charlottetown via Pictou, Wednesdays and Saturday mornings connect with the Plant Line leaving Halifax at midnight of the same days. Steamers of the Plant Line carry freight and passengers locally. For all information apply to W. M. MOMBOURQUETTE, Agent Plant Line Wharf, Charlottetown. H. L. CHIPMAN, Eastern Manager, Halifax N. S. 4-10drw6m

The Charlottetown Steam Navigation Co., Ltd. The "NORTHUMBERLAND" will leave as below daily, except Sunday: CHARLOTTETOWN for PICTOU at 8:30 connecting there with the steamer for CAPE BRETON, SYDNEY and Halifax. A NORTH SYDNEY steamer will leave PICTOU for NEW FOUNDRY at about 4:45 p.m. In CHARLOTTETOWN, on arrival of morning trains from HALIFAX and SYDNEY CONNECTION AT HALIFAX WITH CANADA ATLANTIC AND PEARI LINE FOR BOSTON. THE STEAMER EMPRESS SUMMERSIDE on arrival of morning trains from CHARLOTTETOWN and all stations of the P. E. I. R., for PICTOU, C. D. BELL, Pleasant Street, Charlottetown 1-231 wacw f.

Hotel Dufferin

ST. JOHN, N. B. Foster Bond, & Co. H. BOND, Manager

HOTEL BRUNSWICK

MONCTON, N. B. The Largest and Best Located Hotel in the City. Accommodating 200 guests, situated in the center of spacious grounds, and surrounded by elegant trees, it is especially desirable for tourists. In the summer months. 4-281r7 G. B. MCSWENNEY, Prop.

P. E. I. RAILWAY

Commencing Monday, June 17th 1907, train of this Railway will run as follows: Trains Outward lead down Stations, read up. No. 101, 102, 103, 104, 105, 106, 107, 108, 109, 110, 111, 112, 113, 114, 115, 116, 117, 118, 119, 120, 121, 122, 123, 124, 125, 126, 127, 128, 129, 130, 131, 132, 133, 134, 135, 136, 137, 138, 139, 140, 141, 142, 143, 144, 145, 146, 147, 148, 149, 150, 151, 152, 153, 154, 155, 156, 157, 158, 159, 160, 161, 162, 163, 164, 165, 166, 167, 168, 169, 170, 171, 172, 173, 174, 175, 176, 177, 178, 179, 180, 181, 182, 183, 184, 185, 186, 187, 188, 189, 190, 191, 192, 193, 194, 195, 196, 197, 198, 199, 200.

Synopsis of Canadian North-West HOMESTEAD REGULATIONS.

ANY one numbered section of Dominion Land in Manitoba, Saskatchewan and Alberta, excepting 5 and 34, not reserved, may be homesteaded by any person who is the sole head of a family, or any male over 18 years of age, the extent of one-quarter section, acres, more or less. Entry must be made, personally at the local and office for the district in which the land is situated. The homesteader is required to perform the conditions connected therewith under one of the following plans: (1) At least 200 ft. (or more) upon and cultivation of such land in each year for three years. (2) If the father (or mother) if the father is deceased of the homesteader resides upon a farm in the vicinity of the land entered for the requirements as to residence may be satisfied by such person residing with the father or mother. (3) If the settler has his permanent residence upon farming land owned by him in the vicinity of the homestead, the requirements as to residence may be satisfied by his residence upon the said land. Six copies of notice in writing should be given to the Commissioner of Dominion Lands at Ottawa of intention to apply for patent. Deputy of the Interior, N. W. Unauthorised publication of his act or endorsement will not be valid. 6-24dr1

Vertical text on the left margin, likely from another page or a sidebar, containing various small notices and advertisements.