

The Morning Guardian.

ESTABLISHED 1891.

THE GUARDIAN, CHARLOTTETOWN, PRINCE EDWARD ISLAND, MONDAY, JANUARY 8 1900

PRICE 2 CENTS

BOERS ATTACK LADYSMITH But Were At Every Point Repulsed.

FIGHTING STILL IN PROGRESS

Roberts To Be Made Commander-in-Chief—Relief on The Way For Baden-Powell—The Public is Becoming Indignant—Belief That Ladysmith Cannot Hold Out Much Longer.

ROBERTS TO BE MADE COMMANDER-IN-CHIEF.

LONDON, Jan. 6.—(Special.)—It is now believed that Lord Roberts, if successful in South Africa, will be made Commander-in-Chief for a brief period, and then to be succeeded by the Duke of Connaught.

THE PUBLIC BECOMING INDIGNANT.

The public abuse Lord Wolseley, Lord Lansdowne and the War Office, and threaten serious difficulties to the ministry.

GEN. FRENCH OCCUPIES COLESBURG.

Reports say that General French has occupied Colesburg.

BUILDING A BRIDGE AROUND MAGERSFONTEIN.

General Methuen is reported to be building a bridge around the Boers at Magersfontein.

CANADIANS COVER THE RETURN OF THE COLUMN.

Two companies of Canadians covered the return of General Pilcher's column from Douglas.

IMPORTANT MOVE EXPECTED.

The belief in an important move by General Buller grows, but nothing yet indicates where he will strike.

RELIEF ON THE WAY FOR BADEN POWELL.

Fear exists that Col. Baden Powell's defeat may prevent him holding out; but Col. Plummer who is coming to his relief with 2,000 Rhodesian horses should relieve him any day now. He reached Meehudi, January 1st.

LATEST—SUNDAY.

NEW YORK, Jan. 7.—(Special.)—The Sun says that a critical battle is very near. General Buller is expected to soon advance.

LADYSMITH CANNOT HOLD OUT VERY LONG.

The growing belief is that Ladysmith cannot hold out much longer.

MUCH DEPENDS ON GEN. FRENCH.

Much depends on General French's operations at Colesburg and it is thought that a battle is probably going on now.

DEFEAT WOULD ENDANGER BRITISH BASE AT DE AAR.

The War Office in London has received the following from Gen. Buller: "Following received from General White at Ladysmith, Jan. 6th: 'The enemy attacked Caesar's camp at 2.45 this morning in considerable force.'

"The enemy was everywhere repulsed but the fighting still continues."

ADDITIONAL CASUALTIES

An additional list of casualties in General Gatacre's fight at Stromberg on Dec. 11th. It includes 3 killed, 33 wounded and 14 prisoners.

REPORT NOT CONFIRMED.

The report of General French's occupation at Colesburg has not yet been confirmed, and the only positive report is that he was still vigorously shelling the place yesterday morning.

Pocket,
Office
and
Home
Diaries
for
1900
at

HASZARD & MOORE'S.

Sunnyside.

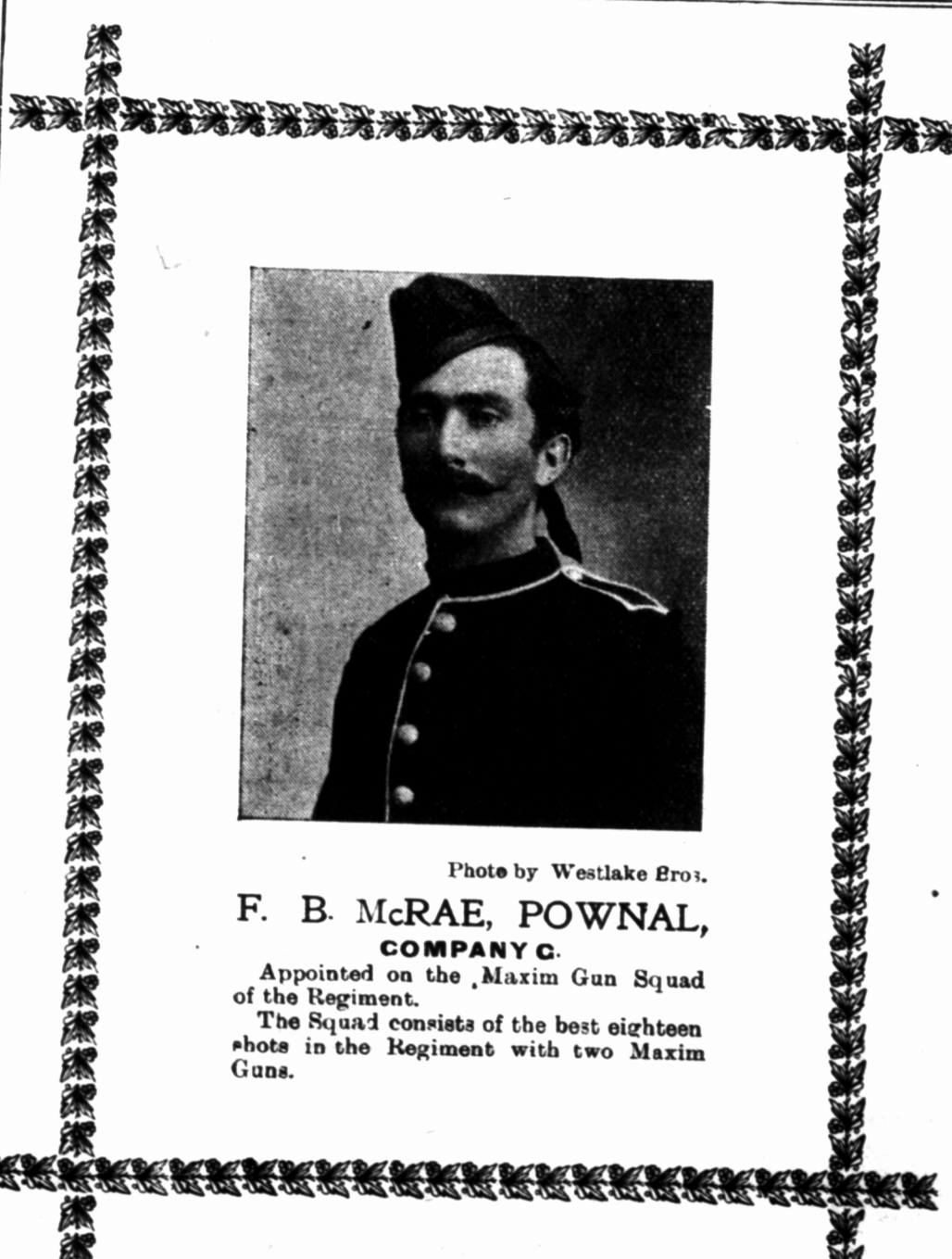


Photo by Westlake Bros.
F. B. McRAE, POWNAL,
COMPANY C.
Appointed on the Maxim Gun Squad
of the Regiment.
The Squad consists of the best eighteen
shots in the Regiment with two Maxim
Guns.

LAKE ERIE

SECURED

To Take Troops to South Africa.

CASHIER SANDBAGGED

Robbed and Was Found in A Yard. She Has Since Died.

MONTREAL, Jan. 6.—(Special.)—The Imperial government has chartered the new Elder Dempster Steamer, Lake Erie, to take the Yeomanry Contingent to South Africa.

TORONTO, Jan. 6.—(Special.)—Miss Rachel Ferguson cashier in one of the Naismith Company Stores was found unconscious inside jail yard. She had been sandbagged and robbed and dragged there.

ROYAL Baking Powder
Made from pure cream of tartar.
Safeguards the food against alum.
Alum baking powders are the greatest menaces to health of the present day.

CANADIAN

TROOPS

Different Contingents On Way to Quebec.

TRANSPORT INSPECTION

Dr. Borden Will Send Four Nurses With the Second Contingent.

ST JOHN, Jan. 6.—(Special.)—Seven men left here tonight for Quebec to strengthen the artillery contingent there and were given a fine send off.

OTTAWA, Jan. 6.—(Special.)—Dr. Borden will send four nurses with the second contingent.

Orders have been sent to Halifax to have the transports Montezuma carefully inspected and all necessary precautions taken to prevent the men from taking typhoid fever which has already appeared among the crew.

NEW YORK STOCK LIST.

Closing Prices	Jan. 6.
American Sugar R'rs	188 1/2
American Steel & Wire	47 1/2
Brooklyn Transit	72
Continental Tob.	33 1/2
Federal Steel	52 1/2
Louisville & Nash	78 1/2
Northern Pacific	42 1/2
Rock Island	106 1/2
St Paul	117 1/2
Southern Rail Fr'd	53 1/2
Southern Pacific	36 1/2
United States Leather	75
Union Pac Fr'd	84 1/2
Western Union	111
United States Rub	111
April Cotton per 100 lbs	7.34

THE BRULE EXTENSION

The Saving in Distance Between

YARMOUTH & CH'TOWN

Halifax Will Also Be Brought Some Sixty Miles Nearer.

The completion of the work on the roadbed of the Midland Railway from Windsor to Truro has brought the people of this County to the point from whence a new and fine start can again be made to advance the development of the vast commercial and tourist traffic which the two provinces of Nova Scotia and Prince Edward Island seem specially destined to enjoy. The Brule extension has for a long time occupied the attention of our people. A dozen or more years ago both the Dominion and the Nova Scotia parliaments granted charters and bonuses of the usual mileage amounts to a company which proposed to build the road. The Midland Railway of Nova Scotia was not then, as now, an accomplished fact, and financial men lost interest in the scheme because there seemed to be no greater traffic development possible than that which would ensue as a matter of course from local surroundings. But now a new phase has been put upon the condition of affairs by the construction of the Midland from Windsor to Truro, and a more expansive character has been given to this last named railroad prospect by the announcement that Windsor and southern shore railway promoters have determined on the construction of a link line from Windsor to New Germany, tapping the Nova Scotia Central near that point, and continuing by the Hervey Road, now being constructed from New Germany to Shelburne.

The question of advantage to Nova Scotia and to this County in particular being apparent, we now desire to dwell upon the usefulness and advantage which such a line as the one proposed, connecting the Brule shore with the Yarmouth and Atlantic coast, will be to the Province of Prince Edward Island. For very many years the question of quick transportation from the Island to the mainland and thence to the markets of the New England States has been annually up for discussion. It is by no means a matter of widespread knowledge, yet it is not strictly confined to the older inhabitants of Northern Nova Scotia and Prince Edward Island that for many years in the earlier part of the last half of the century a most satisfactory and very regular system of communication was in effect between Charlottetown and Brule Harbor, serving in a large degree to supply the demands of traffic between the two shores. The experience of those who conducted the service was, we are given to understand, vastly in favor of the Charlottetown-Brule route over the Charlottetown-Pictou route, not only on account of the length of the open season, which varied from four to six weeks longer, but in this respect rivalled it surpassed the Pictou-Georgetown route, which extended several weeks beyond the Pictou-Charlottetown route. The advantage to Prince Edward Island is herein shown in the matter of distances: Charlottetown to Halifax, at present by way of Pictou, 170 miles. Charlottetown to Halifax by proposed Brule route, estimated as follows: Halifax to Truro 62 miles, Truro to Brule 28 miles, Brule to Charlottetown 20 miles—total 110 miles, or 60 miles saving in favor of the Brule route. The saving in distance between Yarmouth and Charlottetown is quite 110 miles, showing exceedingly in favor of the development of fast traffic.

GERMANY'S RIVAL

Is Said to be The United States.

RUSSIA'S MOVEMENTS

The Stock Exchange Affected By the Massing Of Troops.

LONDON, Jan. 6.—(Special.)—The Spectator says: Germany considers America, not England, her rival and is preparing for future developments in South America which she fears America and the Monroe Doctrine may frustrate.

The Spectator says: the Emperor counts on the help of German voters when his plans are matured and his navy is ready. The Spectator warns America that it must be prepared to act or back down when the time comes.

RUSSIANS TESTING TRANSPORTATION.

The Russians say they are testing the transportation facilities by the new railroad. This is not entirely satisfactory but official circles discredit the idea that Russia threatens Afghanistan or India.

THE STOCK EXCHANGE AFFECTED.

LONDON, Jan. 6.—(Special.)—Prices weak on the stock exchange to-day, owing to the reports that Russia is massing troops on Afghanistan frontier.

CHICAGO MARKETS.

CHICAGO, Jan. 6.—(Special.)—The following are the closing rates: Jan. wheat, 65 1/2; corn, 30 1/2; oats, 22; pork, \$10.55. May wheat, 64 1/2; corn, 32 1/2; oats, 22 1/2; pork, \$10.85. July wheat, 68 1/2; corn, 33 1/2; oats, 23; pork, 10.85.

PELOUBET'S NOTES

INTERNATIONAL
S.S. Lessons

1900

For Sale at
Garter's Bookstore

Home-Made Men's Long Boots.

For winter wear you need good serviceable boots that will keep your feet dry and warm. We manufacture the boots we sell, out of stock tanned with "Long Tan Process" not like the soft spongy stock tanned by the "Quick Process" used by some because it is cheaper. Get the best—Our Own Make. Prices from

\$2.50 to \$5.25.
Goff Bros.

Ch'town Shoe Factory.

[Continued on the last page.]