

PRESIDENT OF ASSOCIATED BOARDS ANSWERS CRITICS

An Old Year's Message to the Boards of Trade and Kindred Organizations Mr. J. O. Hyndman Reviews Maritime Situation and Effectively Answers Critics of the Duffin Report.

As President of the Associated Boards of Trade of Prince Edward Island I desire to take this opportunity to convey to all members of Boards of Trade, Women's Institutes, Agricultural and Live Stock Societies, Fishermen's Unions and citizens generally, my most cordial greetings and best wishes for a Happy and Prosperous New Year.

At the same time I would like to take the liberty to express my gratification as I am sure it must be to every Board of Trade member, that during the year 1926 substantial progress has been made, as a result of persistent and consistent agitation by the Boards of Trade for Maritime Rights.

The Report of this Commission has now been made public and while in some respects it may not be as concise and definite as we should have desired, it is very gratifying, and an opportunity was given to state our case, to know that practically everything Prince Edward Island asked for has been admitted and recommended by the Commission.

It is difficult for any one, who has made a close study of the questions involved, to understand some of the statements and opinions broadcasted recently by certain newspapers in Central and Western Canada to the prejudice of "Maritime" interests, but this can only be credited to ignorance of the true situation.

I wonder if those parties, who thus presume to lead public opinion, are aware that Prince Edward Island the "Garden Province of Canada" held a Bond of the Dominion dishonored for upwards of fifty years.

The terms and conditions upon which Prince Edward Island joined the Confederation contained the following provision: "Efficient steam service for the conveyance of mails and passengers to be established and maintained between the island and the Mainland of the Dominion, Winter and Summer, thus placing the island in communication with the Intercolonial Railway and the Railway system of the Dominion."

We, in Prince Edward Island, as well as tens of thousands of our sons and daughters scattered throughout the broad Dominion, as well as in every State of the Union, know too well the failure to implement this, the chief term of the Confederation Pact, and which was the inducement held out to draw us into the Union.

This failure not only discouraged the Agricultural and Fishing Industries, as well as manufacturing, but must be credited also with the depopulation of our Province. With inefficient and inadequate traffic, natural development of resources is affected and restricted, and opportunities for employment are similarly affected.

You may produce the finest product in the world, but if you cannot market it in the best condition and when required, it depreciates immediately in value. It is proven from the Dominion Statistics as regards our Island Products, prior to the establishment of the Car-Ferry Service in 1916, that our Field Products alone, only realized about 50 percent of their value compared with other Provinces, as we were compelled to dump everything out and shut the local markets before close of Navigation. Today, when we can grade and ship out, at all seasons, our Products, in many cases, command the highest price in the Canadian, United States and world markets. Our fish, in this regard, has, therefore, been incalculable.

The present Car-Ferry Steamer was an experiment and has served to prove the feasibility of the Service, but the development of traffic, both freight and passenger, has far outgrown the present accommodation. The Duncan Commission Report states in this regard that "Altogether the Ferry Boat Service is unsatisfactory."

The Canadian Pacific Railway in their statements in the Press, addressed to the public last year, claimed to be the greatest Nation Building factor in Canada. They contributed upwards of seventy-five million dollars in the early years of their history to insure the completion of this wonderful organization in welding Provinces together. Nova Scotia and Prince Edward Island, as partners of Canada, contributed their quota, but have been deprived of the "Canadian Pacific" services, and rather than having benefited as a partner of Confederation, we have suffered through the luring away of our population to other sections and loss of population means reduced representation at Ottawa.

In the matter of Immigration and Publicity it is generally admitted today that the "Maritimes" have been discriminated against in this regard, and it is a well known fact that Canadian Government Officials in the United States were not authorized or allowed to use their offices to promote the interest of the "Maritimes," but were monopolized entirely for Central and Western Canada.

REPORTS OF WOMEN'S INSTITUTES OF P. E. ISLAND

"Willing Workers."—The monthly "shut-ins" in the community, also meeting of this Institute was held at the home of Mrs. George Runcus. Ten members were present. Meeting opened with "It's a good time to get acquainted." Minutes of the last meeting were read and adopted. Secretary gave her report and there is on hand \$31.35. A donation of \$5.00 was sent to the Protestant Orphanage for candy. A world map and a hand basin were bought for the school. The officers were re-elected. Next meeting at the home of Mrs. Elmer Francis.

"Helping Hand." This Institute met at the home of Mrs. M. J. McPherson. Eight members and three visitors were present. Meeting opened with the Creed. Roll call answered with Christmas Recipes. Minutes of the last annual meeting were read and approved. The secretary read a report of the year's work. \$1.30 was given each school. Christmas treats for pupils, \$3.70 was voted towards a desk for Lewis school. The following officers were elected: Pres., Mrs. Thomas McPherson; vice-pres., Miss Catherine McLean; sec., Miss Margaret McLean. Next meeting at the home of Mrs. George McLean, Lewis.

St. Catherine's.—The members of this Institute met at the home of Mrs. Malcolm Morrow. Seven members and three visitors were present. Meeting opened with the Institute Creed. Roll call answered with "Uses for newspapers." Plans for next year were discussed. The donation of a Box to the Hospital to be filled at next meeting was decided upon. The sum of \$6.00 was paid to Mount Herbert Orphanage. \$5.00 to the Dispensary at Charlottetown. Two new members were enrolled. Next meeting at the home of Mrs. Wm. Morrow.

Mt. Pleasant Institute met at the schoolhouse with six members and two visitors present. Meeting opened by singing Institute Ode followed by Roll Call. Minutes of the last meeting were read and adopted. It was decided to send a Christmas Box to the Infirmary. Also to have a Christmas Tree in the Hall for the children. \$5.00 was voted for decorations for the Hall. Next meeting at the home of Mrs. Tertius Bagnall.

Central Bedque. The monthly meeting of this Institute took place at the home of Mrs. Marchbank Webster. Eleven members and one visitor were present. Meeting opened by singing the Institute Ode. Minutes of the previous meeting were read and adopted. It was decided to send a Christmas Box to the Infirmary. Also to have a Christmas Tree in the Hall for the children. \$5.00 was voted for decorations for the Hall. Next meeting at the home of Mrs. Tertius Bagnall.

Bonshaw. Mrs. George Carson entertained the members of this Institute at their monthly meeting on December 15. Thirteen members and one visitor were present. The Roll Call was answered with Christmas Recipes. Satisfactory reports were read from schools and other committees. Final plans were made for bazaar to be held on the 23rd. Institute is serving lunch and candy. Three dozen cups and saucers to be purchased for use of the Institute. Refreshments were served by the hostesses and the meeting closed with the National Anthem. Next meeting at the home of Mrs. Nell Ferguson.

Harmony. This Institute met at the home of Mrs. William T. Yeo. Eight members and two visitors were present. Meeting opened by singing Institute Ode. Minutes of the last meeting were read and adopted. Owing to bad weather and illness, a small number were present. Two new members were welcomed. Next meeting at the home of Miss Helena Yeo.

Victoria West. The members of this Institute met at the schoolhouse. Seven members and a large number of visitors were present. Meeting opened by singing Ode, and the reading of the Institute Creed. Roll call responded to with Hints on Christmas. A letter was read from the P. C. Hospital, and it was proposed to buy pillow cases for same. Committee members gave their report of the school and the sick in the community. Santa Claus appeared and treated the members and visitors to home-made fudge. Meeting was brought to a close by singing O Canada and the Island Hymn. Next meeting at the home of Mrs. Gillis.

New Annapolis. The members of this Institute met at the home of Mrs. W. H. Moase. Eleven members and three visitors were present. Meeting opened with the Institute Creed. Minutes of the last meeting were read and approved. It was decided to give \$5.00 to P. C. Hospital towards furnishing bed-rooms for nurses. A committee of five were appointed to clean the school. It was decided to hold a Social evening at Mrs. N. J. McNeill's in January. A collection was taken up and lunch was served. A vote of thanks was tendered to the hostess. Meeting closed with the singing of the National Anthem. Next meeting at the home of Mrs. Alden Moase.

Spring Hill. This Institute met at the schoolhouse. Seven members and eight visitors were present. Meeting opened by repeating the Institute Creed and the singing of the Institute Ode. Minutes of the last meeting were read and adopted. Two members were appointed to clean the school. It was decided to hold a concert for Christmas, funds to be used for the schoolhouse. Meeting closed by singing "It's a Good Time to Get Acquainted." Next meeting at the schoolhouse.

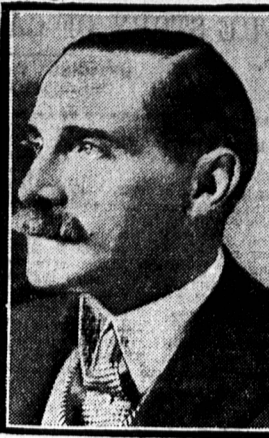
Mt. Albion. The monthly meeting of this Institute was held at the home of Mrs. W. J. McEachern. Twelve members and five visitors were present. Meeting opened with the Creed. Minutes of the last meeting were read and adopted. Concert committee reported, and committees were appointed to visit the school, the sick, and to arrange a program for the next three months. A reading by the president was much enjoyed. Lunch was served and a social evening was spent, which was enjoyed by all. Next meeting at the home of Mrs. Robert J. McEachern. (Continued on page 12)

Southwest, Lot 16. This Institute met at the home of Mrs. E. W. Ramsay. Thirteen members and a number of visitors were present. Meeting opened with the singing of the Institute Ode. Minutes of the last meeting were read and approved. The following officers were elected for the year: Pres., Mrs. Isabella Murphy; vice-pres., Mrs. E. L. Millar; sec., Mrs. E. L. Millar. Each member is to pay 50 cents towards Hospital Fund at next meeting. Answer to Roll Call to be answered: "Their Pet Superstition." An interesting program was prepared by Miss Gladys Wright and Miss Violet Lyle. December meeting will be held on the first Thursday of the month.

Pembroke. The monthly meeting of this Institute took place at the home of Mrs. Alex. Graham. Seventeen members and six visitors were present. Meeting opened by singing Institute Ode. Roll call answered by "Conundrums." Minutes of last meeting were read and adopted. A "Measuring Party" held at the home of Mrs. Ernest Graham on December 9, was very successful. The sum of \$12.70 was realized. A new map of the world is to be bought for school, also the stove is to be repaired. The school is to be cleaned during the Christmas holidays. An autograph quilt is to be made. Next meeting at home of Mrs. Charles Hicken.

Kinross. The meeting of Kinross Women's Institute was held at the home of Mrs. G. A. Grant, with 13 members and 2 visitors present. Meeting opened by singing the Institute Creed. Roll call was answered by naming a wild flower. Minutes of the last meeting were read and adopted. The secretary reported the proceeds of concert held November 22, \$22.50. Mrs. S. D. Campbell, Mrs. D. A. McPherson, and Mrs. Sam Hume were appointed to buy fruit, etc., for the school.

Mt. Albion. The monthly meeting of this Institute was held at the home of Mrs. W. J. McEachern. Twelve members and five visitors were present. Meeting opened with the Creed. Minutes of the last meeting were read and adopted. Concert committee reported, and committees were appointed to visit the school, the sick, and to arrange a program for the next three months. A reading by the president was much enjoyed. Lunch was served and a social evening was spent, which was enjoyed by all. Next meeting at the home of Mrs. Robert J. McEachern. (Continued on page 12)



The "three thousand family" emigration scheme sponsored by the British and Canadian governments has proved "a conspicuous success" and promises to become "the most successful colonization effort undertaken by any government in modern times," according to a report submitted to the authorities in London by Lord Clarendon, who recently toured Canada to study

Barley A Weed Killer

Increasing planting of barley has called attention to one valuable attribute of this grain—it is an efficient suppressor of many kinds of weeds. It is also a useful crop as a nurse for clovers and alfalfa. As a weed preventive, it is of course necessary to get carefully clean and pure seed barley at the start, such as can be furnished only by the better class seed houses which are fitted up with machinery for testing the grain so that it entitles for the seed trade free from weeds and other impurities. Starting with pure seed barley will be valuable to suppress the growth of many weeds infesting the fields. A South Dakota experiment station bulletin says concerning the ability of barley to fight weeds: "Barley is a rather strong growing crop and is able to compete with most weeds. Large numbers of weeds in a field of barley will reduce the yield of grain considerably, however. A well-prepared seedbed gives the crop an opportunity to grow rapidly and overcome some of the weed pests. Barley following a cultivated crop will be fairly free from weeds. Careful cleaning of the grain with the fanning mill will remove nearly all of the objectional weed seeds."

"Barley is a rather strong growing crop and is able to compete with most weeds. Large numbers of weeds in a field of barley will reduce the yield of grain considerably, however. A well-prepared seedbed gives the crop an opportunity to grow rapidly and overcome some of the weed pests. Barley following a cultivated crop will be fairly free from weeds. Careful cleaning of the grain with the fanning mill will remove nearly all of the objectional weed seeds."

"Barley is a rather strong growing crop and is able to compete with most weeds. Large numbers of weeds in a field of barley will reduce the yield of grain considerably, however. A well-prepared seedbed gives the crop an opportunity to grow rapidly and overcome some of the weed pests. Barley following a cultivated crop will be fairly free from weeds. Careful cleaning of the grain with the fanning mill will remove nearly all of the objectional weed seeds."

"Barley is a rather strong growing crop and is able to compete with most weeds. Large numbers of weeds in a field of barley will reduce the yield of grain considerably, however. A well-prepared seedbed gives the crop an opportunity to grow rapidly and overcome some of the weed pests. Barley following a cultivated crop will be fairly free from weeds. Careful cleaning of the grain with the fanning mill will remove nearly all of the objectional weed seeds."

Pure Seed Wheat In Demand

Since the Virginia colony began the production of wheat in America in 1618 there has been constant study and experiment to produce a pure seed wheat of the world's bread-supply grain. Thanks to the constant efforts of scientists and practical plant breeders we now have wheat of various grades suitable for various purposes and of greatly increased productiveness per acre. Pure seed wheat is a prime necessity. It is in great demand and it is one grain where the seedman must often come to the rescue when the home-grown seed crop proves a failure. With modern seed-cleaning machinery it is a simple matter for the big seed house to turn out pure, clean high-grade seed which cannot be prepared on the farm where the fanning mills remove part of the impurities but leave altogether too large a percentage to be safe for planting. Concerning the necessity of clean seed a recent Nebraska state bulletin says: "Good seed wheat is necessary for best results. It should be free from weed seed, smut, mixtures of rye, and should be a variety well adapted. A fanning mill will not remove mixtures of rye, but it will take out dirt chaff and pieces of straw that may interfere with drilling. It will also remove much of the cracked grain that has feeding value but no value as seed, and will take out most wheat seeds and badly shriveled kernels, also most of the light smutty kernels. If the seed contains none of these, fanning will probably be of no advantage."

"Where one has wheat of a poor variety, or that is mixed with rye, it is advisable to change, and if slow for telegrams in France and the zone, it should be obtained in the 'reotype' similar to the ticket."

"Where one has wheat of a poor variety, or that is mixed with rye, it is advisable to change, and if slow for telegrams in France and the zone, it should be obtained in the 'reotype' similar to the ticket."

"Where one has wheat of a poor variety, or that is mixed with rye, it is advisable to change, and if slow for telegrams in France and the zone, it should be obtained in the 'reotype' similar to the ticket."

"Where one has wheat of a poor variety, or that is mixed with rye, it is advisable to change, and if slow for telegrams in France and the zone, it should be obtained in the 'reotype' similar to the ticket."

"Where one has wheat of a poor variety, or that is mixed with rye, it is advisable to change, and if slow for telegrams in France and the zone, it should be obtained in the 'reotype' similar to the ticket."

"Where one has wheat of a poor variety, or that is mixed with rye, it is advisable to change, and if slow for telegrams in France and the zone, it should be obtained in the 'reotype' similar to the ticket."

"Where one has wheat of a poor variety, or that is mixed with rye, it is advisable to change, and if slow for telegrams in France and the zone, it should be obtained in the 'reotype' similar to the ticket."

"Where one has wheat of a poor variety, or that is mixed with rye, it is advisable to change, and if slow for telegrams in France and the zone, it should be obtained in the 'reotype' similar to the ticket."

"Where one has wheat of a poor variety, or that is mixed with rye, it is advisable to change, and if slow for telegrams in France and the zone, it should be obtained in the 'reotype' similar to the ticket."

"Where one has wheat of a poor variety, or that is mixed with rye, it is advisable to change, and if slow for telegrams in France and the zone, it should be obtained in the 'reotype' similar to the ticket."

"Where one has wheat of a poor variety, or that is mixed with rye, it is advisable to change, and if slow for telegrams in France and the zone, it should be obtained in the 'reotype' similar to the ticket."

"Where one has wheat of a poor variety, or that is mixed with rye, it is advisable to change, and if slow for telegrams in France and the zone, it should be obtained in the 'reotype' similar to the ticket."

"Where one has wheat of a poor variety, or that is mixed with rye, it is advisable to change, and if slow for telegrams in France and the zone, it should be obtained in the 'reotype' similar to the ticket."

"Where one has wheat of a poor variety, or that is mixed with rye, it is advisable to change, and if slow for telegrams in France and the zone, it should be obtained in the 'reotype' similar to the ticket."

"Where one has wheat of a poor variety, or that is mixed with rye, it is advisable to change, and if slow for telegrams in France and the zone, it should be obtained in the 'reotype' similar to the ticket."

"Where one has wheat of a poor variety, or that is mixed with rye, it is advisable to change, and if slow for telegrams in France and the zone, it should be obtained in the 'reotype' similar to the ticket."

"Where one has wheat of a poor variety, or that is mixed with rye, it is advisable to change, and if slow for telegrams in France and the zone, it should be obtained in the 'reotype' similar to the ticket."

"Where one has wheat of a poor variety, or that is mixed with rye, it is advisable to change, and if slow for telegrams in France and the zone, it should be obtained in the 'reotype' similar to the ticket."

"Where one has wheat of a poor variety, or that is mixed with rye, it is advisable to change, and if slow for telegrams in France and the zone, it should be obtained in the 'reotype' similar to the ticket."

"Where one has wheat of a poor variety, or that is mixed with rye, it is advisable to change, and if slow for telegrams in France and the zone, it should be obtained in the 'reotype' similar to the ticket."

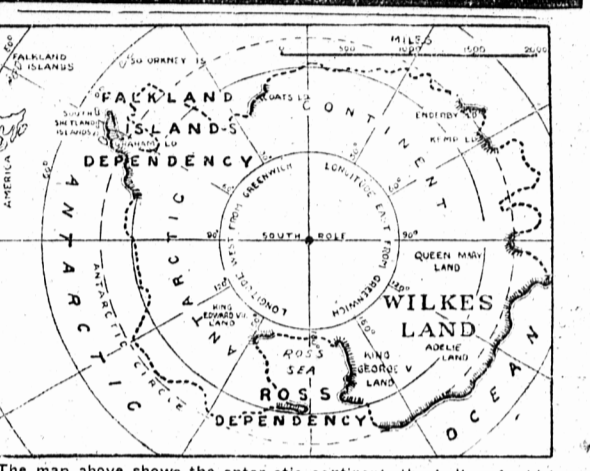
"Where one has wheat of a poor variety, or that is mixed with rye, it is advisable to change, and if slow for telegrams in France and the zone, it should be obtained in the 'reotype' similar to the ticket."

Old Dutch



HEALTHFUL CLEANLINESS is the one thing every home should be sure of. Every cleaning operation, kitchen, bathroom, woodwork, floors, etc., needs Old Dutch. Old Dutch contains no lye, acids or hard gritty substance injurious to the hands or surfaces. Sure, safe economical cleaning is the result of using Old Dutch. MADE IN CANADA

FOR Healthful Cleanliness



The map above shows the antarctic continent, the bulk of which was claimed as British territory at the recent imperial conference.

variety, or that is mixed with rye, it is advisable to change, and if slow for telegrams in France and the zone, it should be obtained in the 'reotype' similar to the ticket."

variety, or that is mixed with rye, it is advisable to change, and if slow for telegrams in France and the zone, it should be obtained in the 'reotype' similar to the ticket."

variety, or that is mixed with rye, it is advisable to change, and if slow for telegrams in France and the zone, it should be obtained in the 'reotype' similar to the ticket."

variety, or that is mixed with rye, it is advisable to change, and if slow for telegrams in France and the zone, it should be obtained in the 'reotype' similar to the ticket."

variety, or that is mixed with rye, it is advisable to change, and if slow for telegrams in France and the zone, it should be obtained in the 'reotype' similar to the ticket."

variety, or that is mixed with rye, it is advisable to change, and if slow for telegrams in France and the zone, it should be obtained in the 'reotype' similar to the ticket."

variety, or that is mixed with rye, it is advisable to change, and if slow for telegrams in France and the zone, it should be obtained in the 'reotype' similar to the ticket."

variety, or that is mixed with rye, it is advisable to change, and if slow for telegrams in France and the zone, it should be obtained in the 'reotype' similar to the ticket."

variety, or that is mixed with rye, it is advisable to change, and if slow for telegrams in France and the zone, it should be obtained in the 'reotype' similar to the ticket."

variety, or that is mixed with rye, it is advisable to change, and if slow for telegrams in France and the zone, it should be obtained in the 'reotype' similar to the ticket."

variety, or that is mixed with rye, it is advisable to change, and if slow for telegrams in France and the zone, it should be obtained in the 'reotype' similar to the ticket."

variety, or that is mixed with rye, it is advisable to change, and if slow for telegrams in France and the zone, it should be obtained in the 'reotype' similar to the ticket."

variety, or that is mixed with rye, it is advisable to change, and if slow for telegrams in France and the zone, it should be obtained in the 'reotype' similar to the ticket."

variety, or that is mixed with rye, it is advisable to change, and if slow for telegrams in France and the zone, it should be obtained in the 'reotype' similar to the ticket."

variety, or that is mixed with rye, it is advisable to change, and if slow for telegrams in France and the zone, it should be obtained in the 'reotype' similar to the ticket."

variety, or that is mixed with rye, it is advisable to change, and if slow for telegrams in France and the zone, it should be obtained in the 'reotype' similar to the ticket."

variety, or that is mixed with rye, it is advisable to change, and if slow for telegrams in France and the zone, it should be obtained in the 'reotype' similar to the ticket."

variety, or that is mixed with rye, it is advisable to change, and if slow for telegrams in France and the zone, it should be obtained in the 'reotype' similar to the ticket."

variety, or that is mixed with rye, it is advisable to change, and if slow for telegrams in France and the zone, it should be obtained in the 'reotype' similar to the ticket."

variety, or that is mixed with rye, it is advisable to change, and if slow for telegrams in France and the zone, it should be obtained in the 'reotype' similar to the ticket."

E. R. BROW 146 Richmond St. Charlottetown Fire, Life, Accident, Sickness and Plate Glass Insurance at Lowest Rate Good Strong Stock Companies Agent at Summerside, Lloyd Lewis.

IMPERIAL COD OIL AND DOG BISCUIT Their Choice A BALANCED RATION SUCCESSFUL WINTER FEEDING REQUIRES IMPERIALS The "Power Foods," which supply energy and strength, are a necessity for your breeding foxes at this time. All the energy and strength must come from food and chiefly from one class of foods called "carbohydrates." From one-third to one-half of the foxes' diet should be made up of them. IMPERIAL COD LIVER OIL BISCUIT ranks very high in carbohydrates and its the correct cereal to feed at this season. IMPERIALS are also rich in vitamins and mineral salts, both absolutely necessary for healthy, vigorous foxes. BEST RESULTS IN REPRODUCTION are obtained from the regular feeding of IMPERIALS during the gestation period, as they are laxative and have a cooling effect on the blood. Feed them the morning meal of dry IMPERIALS. IMPERIALS are sold by leading distributors or direct from the factory. Imperial Biscuit Co., Ltd. x 446