

COMPLETE FINANCIAL SERVICE
Government and Corporation Bonds
Listed and Unlisted Stocks
Bought and Sold Daily Quotations

F. J. BRENNAN & COMPANY LTD.
Members Investment Dealers' Association of Canada
E. M. BAGNALL, Manager
144 Richmond St. Charlottetown Telephone 1470

Advertising Rates—Payable in Advance

Minimum Charges For Any Advertisement 25 Cents.
Central Guardian locals 5c per word; Western and Eastern locals 2c per word; Announcements and Coming Events 3c per word; Classified 3c per word; In Memoriam Notices 5c per line; Lists of Floral and Spiritual Offerings, Cards, etc., 5c per name; Letters of Condolence 5c per inch; Wedding Engagements, 4c words for \$1.00 and 10 cents for every additional 3 words; Notices of Thanks and Appreciation, 8c per inch or 5c per word; Lists of Subscriptions, 4c per inch; Address and Presentation, \$1.00. Other rates on application.

For Sale

FOR SALE—MODERN METAL
Ice box, \$36. Acc. used about four months. Phone 1168-L.

FOR SALE—TRUCK, 1937 FORD
V-8. Apply Davy's Garage.

FOR SALE—SEMI TRAINED
Golden Retriever Female. Registered. Phone 2361.

FOR SALE—SMALL RANGE
Good condition. Apply 25 Hillsboro Street.

FOR SALE—MODEL A FORD
In good condition. Apply 17 Orielar Street.

FOR SALE—ONE SECOND-HAND
Record kitchen range in good condition. Apply 122 Fitzroy St.

FOR SALE—PRESSED HAY, ED
Sheppard. Phone 361.

FOR SALE—DISK HARROW, 12
disk complete with pole, swings for three horses. Slightly used. J. H. MacPhail, New Haven.

FOR SALE—1940 INTERNATIONAL
3-ton truck. Transfer. Also 1941 half-ton International truck with overload springs. Apply Burhoe's Grocery.

Sales Help & Agents

SALES HELP. AGENTS
Agents calling on high-class shoe trade for interesting line, "Ladies Rubbers". Commission basis. Write Lanox, Confederation Bldg., Montreal, Quebec.

Wanted

COUPLE WANTS APARTMENT
House or rent. Write Box 316, Guardian.

WANTED—BICYCLE, STATE
condition and price. Lloyd MacLean, North Wilshire.

WANTED—JUTE BAGS, BRING
or ship us all kinds. Jute bags, will pay freight on lot over 100. Highest prices. J. F. Morris, Kinkora, P. E. I.

WANTED—ALE BOTTLES,
Phone 2342. Michael Bros.

WANTED—ALE BOTTLES,
Phone 2208. Maurice Block.

Personal

HYGIENIC SUPPLIES (RUBBER
goods) mailed postpaid in plain, sealed envelope with price list. 6 samples 25c; 24 samples \$1.00. Mail-Order Dept. B8, Nov-Rubber Co. Box 91, Hamilton, Ont.

For Sale

Half Acre of land on North River Road, outside City Limits, suitable for good building. Apply: A. WALTHAM GAUDET, Solicitor, Phillips Building, 111 Grafton St.

BABY CHICKS FOR SALE

Place your order for your 1947 chicks now, and save money. Lowest prices guaranteed. If price lowers, you will get the benefit. THOMAS HUGHES, c/o Bush's Store, 144 Elm Avenue.

Wanted

Young man to work in office. Typing and shorthand required. Write, stating salary expected, to Box "A B", c/o Guardian.

Trained Help WANTED

Lady with Diploma from Hair Dressing School, wanted to take charge of a new Beauty Parlor. Write, stating experience and qualifications, to BOX 314, GUARDIAN OFFICE.

Mining

TORONTO, Feb. 27—

Sales Stock	130
800 Albit	130
1500 Alger	28 1-2
2000 Am Lard	150
600 Ang Ind	122
5100 Ang Rou	122
2800 Apex	9 1-2
2600 Aquar	62
1000 Arjon	22
5800 Arma	96
2500 Arnt	10 1-4
5000 Astoria	15
1000 Aumor	80
2200 Athona	28
2700 Atlas YK	28
3200 Aubelle	26
12300 Aumst	57
1000 Aumor	32
6000 Bagam	22
40 Bk Tor	34 1-4
81500 Base Met	15
4600 Bea	73
14700 Beaulieu	43
25 Belltre	875
10500 Bevo	125
33415 Bidgood	24
3700 Bolt	40
3670 Bonet	40
400 Bralor	12 1-2
2500 Brd Dom	20
3500 Buffadi	153
950 Buff Ank	430
2400 Buff Cdn	30
2000 Buff Pk	28
1000 Bunk Hill	28
1500 Calder	28
1800 Cal Edm	226
1500 Callian	13
345 C Brown	26
2500 Cdn Mal	78
600 Cas Tret	130
400 Chen Res	24
4400 Ches Res	60
72800 Ches Kirk	22
2500 Citral	19
1140 Cocheno	315
600 Cdn	49
9800 Colomac	32
300 Coniar	141
9700 Con Beattie	26
140 Cdn Smelt	88
4930 Conwest	120
3000 Courmor	36
1300 Croimor	125
4700 Crowsho	132
900 Delnite	225
27100 Denison	19
13400 Delta	150
1800 Discov	85
400 Div Int	127
1500 Donal	3-8
11300 Donald	140
3700 Duqup	126
2000 Duvay	19
2500 E Amph	41
2000 E Pat	07 1-2
6750 E Mal	230
3600 E Sull	380
12400 E Sar	120
20100 Eldona	73
1786 Eureka	260
800 Falcon	465
825 Fobish	300
4707 Giant	625
1500 Glenora	05 1-2
59919 God L	180
10000 Gid	21 1-2
2000 G Eag	17 1-2
2700 Go Hawk	275
7000 Go Man	515
10000 Goldvue	33
21300 Goodfr	08 1-2
2100 Gunnar	50
5800 Hald	02
2620 Hard R	59
1000 Harrie	17 1-4
13100 Hasaga	130
1500 Hasaga	115
800 Hodley	88 3-4
3500 Hodge	12 1-2
10000 Hider	10 3-4
1820 Home	345
1700 Hococ	61
1500 Hodge	42
5500 Hugh Mal	03 7-8
891 Int Nick	34 7-8
2000 Int Pete	1-4
1500 Jans	60
5900 Jaton	50
8500 Joliet	72
1500 Kaynard	12
1500 Kerr Add	12
2050 Kirk Gold	39 1-2
7400 Kirk L	182
4500 Kirtwin	535
1500 Kirtwin	535
6200 Laguer	54
3000 L Fortune	03
1300 L Shore	1-2
1500 Lard	10
10000 Lar U	370
100 La Luz	370
962 Lamaq	56
5100 Lard	127
200 Leitch	127
2000 Lexin	25
18000 Lingman	233
1500 Lint	60
3900 Louvie	209
1100 Luardard	31 1-2
1855 MacDonal	400
2000 MacDonal	32
4825 MacLeod	215
1025 Madson	42
1500 Madson	225
2500 Malart	225
5500 Martin	11
200 McAtyre	3-4
2625 McKenz	81
2000 Mid Con	50
440 Mgr Corp	925
1500 Moneta	62
2200 Mylam	21
1800 Negus	245
4700 New Bida	07 1-2
100 New Galu	115
5100 Nichol	09 1-2
24700 Norben	55
18400 New Marlon	172
1100 Normet	113
2500 Norse	13 1-2
3700 N Ino	69
1200 Norze	245
70500 Norzone	54
1800 Norpick	42
4800 O'Brien	173
9800 Ogama	172
1500 Omeria	12
7000 Orlac	64
9800 Orlac	63
2300 Orlac	63
1500 Pacita	08
2000 Pacif Pete	100
1900 Perron	161
11100 Parnour	13
1500 Pandora	18
7500 Paramaq	34
9450 Paymast	34
27400 Pen Rey	123
1900 Perron	161
3050 Pick Cr	390
500 Pioneer	410
3000 Porc Pen	29

New York Exchange

Anaconda	40 3-4
Am Car and P	52 1-2
Beth Steel	28 1-2
N Y Central	20 1-8
Con and Ohio	50 7-8
Con Ed	28 1-4
Elec Auto Lite	37 3-4
Gen Elec	61 1-2
Genl Motors	60 3-4
Gr Nor Pfd	14 1-2
Sid Oil NJ	65 1-4
Kennecott	47
M Ward	60
Nor Am	31 1-4
Phil Pete	36 5-8
U S Rubber	9 3-8
Radio C	56 3-4
Texas Cp	18 1-2
Untd Air	19 1-2
Vanadium	20 7-8
W Union	28 1-2
Westinghouse	74 5-8
U S Steel	23 1-2

BANKS

Commerce	32
Mt	23 1-2
N Scotia	58 1-4
Royal Bank	24 1-2

Help Wanted

WANTED—MAID FOR LIGHT
housework for one month. Phone 2117-J.

WANTED—WOMAN OR GEL
for light housework in small family for month of April. Write "M" Guardian.

Business Opportunities

REPRESENTATIVE WANTED
to introduce new travel and recreation magazine. Playtime. Attractive pre publication rates. Generous commission and bonus arrangement. Write Circulation Manager, 825 Dominion Square Building, Montreal, Que.

Miscellaneous

NOTICE—SERVICE OF A REG.
York. Board may be obtained at George Dovers, Peake's.

PAYING FOR COWHIDES USE FREE
Ice Block & Co.

SEWING MACHINES CAN BE
repaired. Just ship head of machine crated c/o 264 Robinson St. Moncton, N. B. Belt for sale.

Lost Found Strayed

LOST, THURSDAY AFTERNOON
one truck tire and rim. Firestone, 750x20. between Summerdale and Brookfield. Finder please call Jenkins Transfer, 1018 or 350. Reward.

FOUND—SET OF KEYS, OWNER
may have same by calling at this office and paying for ad.

CAUGHT—A MALE FOX,
Apply Chester Callaghan, Johnston's River.

For Rent

TO LET—OFFICE SPACE AT 205
Grafton Street.

Potato Market Report

The following Dominion Department of Agriculture Marketing Service report is for Tuesday, February 25.

Unless otherwise specified, all quotations are wholesale to retail for 75-lb. sacks. No. 1 grade, in good merchantable condition.

MONTREAL: Truck receipts nil. Car arrivals, 2 N. B. Number of cars on track including broken, 26. Supplies light, demand moderate, market steady. P. E. I. Whites, \$1.40 to \$1.50; N. B. \$1.20 to \$1.40; Que, \$1.25.

OTTAWA: Truck receipts nil. Car arrivals, 2 N. B. Number of cars on track including broken, 7. Supplies heavy, demand moderate, market steady. N. B. Whites \$1.36 to \$1.45; Que, \$1.30; 50 lb. paper, 90 to 95c; 10 lb. re-packed 22c. Locals, No. 2, 75 to 85c.

TORONTO: Truck receipts liberal. Car arrivals, 5 P. E. I., 5 N. B. Number of cars on track including broken, 6. Supplies liberal, demand moderate, market steady. P. E. I. Whites, \$1.50 to \$1.60; N. B. \$1.45 to \$1.50; Ont. \$1.10 to \$1.25.

Maritime potato movement during the 24 hours ending midnight:

P. E. I. carloads passing Cape Tormentine: N.S. 4, N.B. 1, Montreal 1, Toronto 6, Other Ont. 4, U. S. A. 14.
Carloads passing McAdam, Edmundston and Riviere du Loup: P. E. I. N.B. 1, Montreal 1, Toronto 1, Other Ont. 1, U. S. A. 10.

(Unreported Yesterday)

Montreal	1	8
Other Quebec	5	5
Ottawa	11	1
Toronto	7	1
Other Ontario	1	1
Manitoba	1	1
U. S. A.	10	1

Seasonal Summary (Carlots)

Total	
To Date	P. E. I. N. B. N. S. Total
1946-47	3917 6243 332 10462
1945-46	3699 6850 144 9293

New York Stocks

In Recovery Push

NEW YORK, Feb. 27—(AP)—Stocks generally enjoyed a recovery push in today's market although the speed which accompanied the recent decline was lacking.

Improved tendencies ruled from the start. At the best gains ranged from fractions to a point or so with assorted favorites up around 4. Top marks were trimmed in most cases at the close. Steels, motors, coppers, gold mines, precious metals, selected rails and pivotal industrials paced the revival. Dealings frequently slowed and transfers for the full stretch amounted to 970,000 shares compared with 1,350,000 the day before.

The Associated Press 60-stock composite was up 7/8 of a point at 66 1/2, best upturn since Feb. 7.

Canadian issues closed strong. McIntyre, up 1/8, of 1 1/4 and Dome Mines, up 1/8, were the Canadian leaders. Canadian Pacific gained 1-4 and Distillers Seagrams moved up 1-2. On the curb, Lake Shore was up 3-8 and Giant Yellow gained 1-4.

A number of shares responded to pleasing dividends but others were notably indifferent. Fractious and utility issues, fractional laboratories up 4 at 76 1-2; National Cash Register 2 at 39; Homestake Mining 2 3-4 at 43; U. S. Freight 2 at 17 3-4; Muller Brass 1 at 22 1-2 and Great Western Sugar 3-4 at 26 1/4.

Others to ascend were Norfolk and Western up 4 1-2 at 247 1-2 again reflecting the split-up proposal; U. S. Steel 1 1/4 at 74 5-8; Chrysler 1 at 98; Goodrich 1 1/8 at 11 1-2; Montgomery Ward 1 at 90; International Harvester 1 1-2 at 79 1-2; Kennecott 1 3-8 at 47; American Smelting 1 3-4 at 57 1-2; Canadian Chemical 2 at 168; Allied Chemical 2 at 172 1-2; J. C. Penney 2 at 45 1-4; U. S. Gypsum 6 at 101 1-2; and American Woolen 1 7-8 at 42 1-2.

Advancers were Bethlehem, Youngstown Sheet, General Motors, Sears Roebuck, Deere, Motors, Phoebe Dodge, Cudahy, Walden and Co., Armour (the day's most active); United Airliners; Eastern Air Lines; Pan American Airways; Dupont; Air Reduction; Texas Co., Standard Oil (N.J.), Santa Fe, N. Y. Central, Baltimore and Ohio, Public Service, N. E. McIntyre, Forcupine and Dome Mines.

Declines were posted for Speery; Great Northern Railway; Pennsylvania Railroad; Woolworth and American Can.

New York Stocks

In Recovery Push

2900 Powell	159
900 Do Vi	175
2250 Preston	140
100 Propriet	14
500 Que Min	88
2100 Quemont	75
16000 Regent	18 1-2
3150 Richmac	42
35480 Rouyn	45
13100 Roxana	24 1-2
29200 Sisco	58
8600 Rush	50
600 San Ant	420
2200 Sannorm	54
2400 Senator	54
200 Sheep	145
51870 Sherritt	445
23700 Silv Miller	90
10000 Wilbo	48
6000 Sladen	48
1200 Springer	110
2533 Stada	92
5500 Starratt	46
5200 Steep Ro	240
4700 Sulliv	251
3400 Teck H	345
4500 Turbols	58
4000 Towag	24
2800 Trans Res	83
2566 Upper Can	12
3900 Wauke	475
31400 Wekus	46
2000 Wilsey	13 1-2
10500 War H	325

CURB

2700 Yukon Cons Gold	135
Total sales	1,426,000.

Auction Sale

The postponed auction sale of hay at Alexandra will take place March 5 at 2 o'clock if fine, if not first fine day, at farms of Lester Beaton and Judson Bros. Will sell by 1 or more tons.

For further information inquire of Judson Bros. or Robertson Transfer, Southport.

Stock Prices At Montreal Unchanged

MONTREAL, Feb. 27—(CP)—Selected securities accounted for bulk of turnover on the stock exchange and curb market today with individual paper, industrial and utility issues, fractional laboratories up 4 at 76 1-2; National Cash Register 2 at 39; Homestake Mining 2 3-4 at 43; U. S. Freight 2 at 17 3-4; Muller Brass 1 at 22 1-2 and Great Western Sugar 3-4 at 26 1/4.

Others to ascend were Norfolk and Western up 4 1-2 at 247 1-2 again reflecting the split-up proposal; U. S. Steel 1 1/4 at 74 5-8; Chrysler 1 at 98; Goodrich 1 1/8 at 11 1-2; Montgomery Ward 1 at 90; International Harvester 1 1-2 at 79 1-2; Kennecott 1 3-8 at 47; American Smelting 1 3-4 at 57 1-2; Canadian Chemical 2 at 168; Allied Chemical 2 at 172 1-2; J. C. Penney 2 at 45 1-4; U. S. Gypsum 6 at 101 1-2; and American Woolen 1 7-8 at 42 1-2.

Advancers were Bethlehem, Youngstown Sheet, General Motors, Sears Roebuck, Deere, Motors, Phoebe Dodge, Cudahy, Walden and Co., Armour (the day's most active); United Airliners; Eastern Air Lines; Pan American Airways; Dupont; Air Reduction; Texas Co., Standard Oil (N.J.), Santa Fe, N. Y. Central, Baltimore and Ohio, Public Service, N. E. McIntyre, Forcupine and Dome Mines.

Declines were posted for Speery; Great Northern Railway; Pennsylvania Railroad; Woolworth and American Can.

Montreal Exchange

Abitibi	19
Asbestos	28
B A Oil	23 3-4
Big Bear	30 1-2
Bruck Silk	27
Bell Tel	190
Bathurst	22
Can Vickers	14 1-4
CPR	25
Celanese	66
Can Car Pfd	14
Can Stp	15 3-4
Ham Brod	18 3-8
Cons Paper	18 3-8
Cockshutt	13 1-2
Ford A	25
Dom Bridge	33 1-2
Dom Coal Pfd	15
Dom A	18
Dom S B	15 1-4
Dryden	18
Fraser	53
Imp Oil	28 1-2
Imp Oil	28 1-2
Int Mkt	35
Int Mkt	35
Int Pete	13 1-4
Ir Power	44
Imp Tot	15 1-4
Imp Tot	15 1-4
Con Smelt	87 1-2
Lake Power	34
Mil Power	23 3-4
Massey Harris	21
McCull Front	25
Nal S B Car	20 1-2
Can Nor Pfd	10
Voranda	48 1-4
Price Bros	58
Que Pow	20
Shawinigan	24 1-4
St. Lawrence	12 1-2
Do Pfd	41
Dom Textile	98
Dom Tar	28
Wag Elec A	16
Steel Cda	79
Brazilian	22 1-2

Produce

MONTREAL, Feb. 27—(CP)—Produce prices quoted here today reported by the Dominion Department of Agriculture follow:

Eggs, free cases: A large 50-36 1-2; B medium 34-34 1-2; C pullets 30-30 1-2; B 31-32; C 25-26; packed for export: A large 38 1-2; B medium 36 1-2; A pullets 32 1-2.

Butter: Wholesale, Que pasteurized, fresh and storage no. 1 40 1-2; current receipt Que no. 1 pasteurized 39 3-4; del Mil; no 2 38 3-4; del Mil; first grade creamery prints job price 42; solids 41.

Cheese: Western and Que; current receipt, job factory, colored 22 1-16; white 22; wholesale, colored 22 13-16-23 1-16; white 22 3-4-23.

Potatoes: 75 lb bags, P. E. I. 1.35-1.45; N. B. 1.30-1.35; Que 1.25.

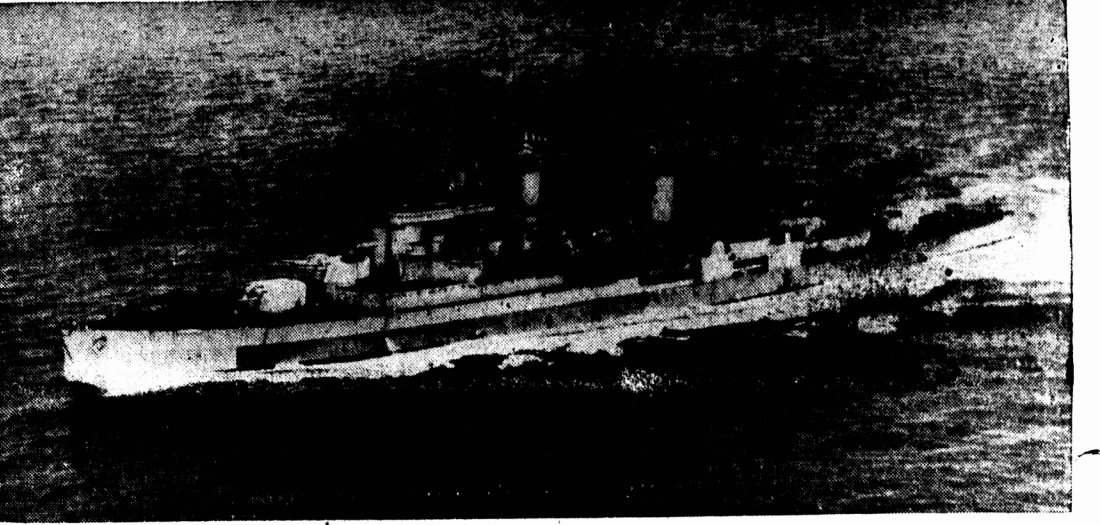
NAPOLEON'S CHOICE

Napoleon had a woman minister of air—Madame Marie Blanchard.

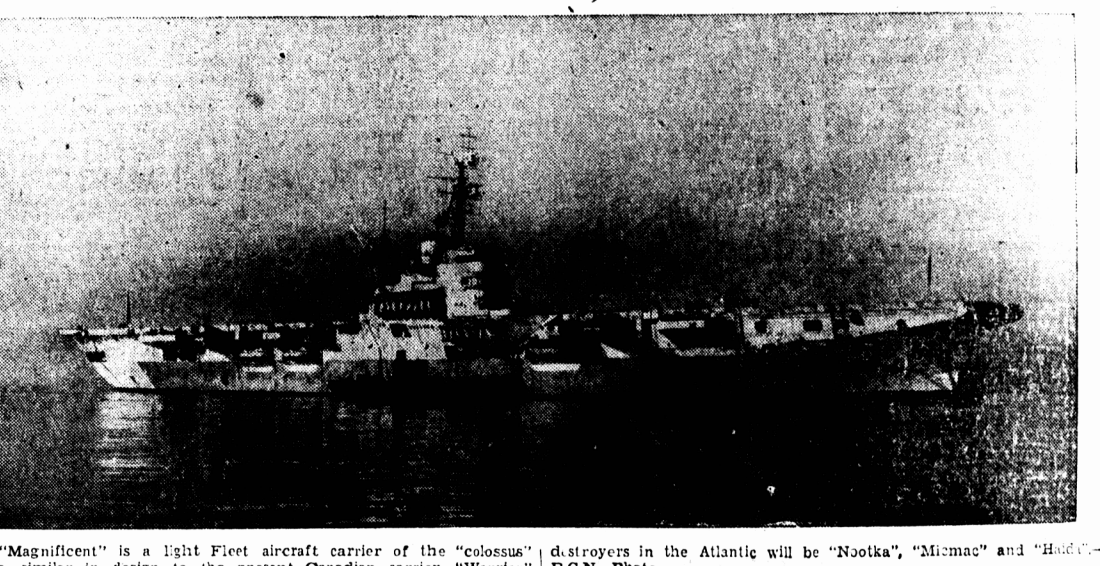
NOTICE

High grade American Bituminous (soft) Coal to arrive shortly. WHEN YOU WANT GOOD COAL CALL AT OR PHONE WEEKS' COAL YARDS

OPERATIONAL BASES FOR ROYAL CANADIAN NAVY



"Ontario" is a "Swiftsure" class cruiser whose main armament consists of nine six-inch guns. She is in many respects a more modern warship than the present operational cruiser, "Uganda". "Ontario" is shown above. Pacific coast operational destroyers will be "Cayuga", "Athabaskan" and "Crescent".



"Magnificent" is a light Fleet aircraft carrier of the "colossus" class, similar in design to the present Canadian carrier, "Warrior" (shown above), but embodying the latest modifications. Operational destroyers in the Atlantic will be "Nootka", "Mimac" and "Haddock". R.C.N. Photo.

Britain's Situation In 1947

(Continued from Page 4)

earn dollars or their equivalent and pay for our essential imports from these countries. (3) A close import control must be maintained, particularly of products which come predominantly from the western hemisphere. (4) Home production must be increased along lines which contribute to these policies; agricultural and shipping are of major importance for this. The long-term target for exports still stands at one-hundred and seventy-five percent of the 1938 volume. Britain will have to devote at least twenty-five percent of her manufacturing capacity to export in the future.

The Government has sought to frame a balanced