

# METROPOLITAN STORES Ltd

*To the Public of Charlottetown  
and District:*

**This Metropolitan Store  
Is Thoroughly Ventilated!**

In the planning and erection of all Metropolitan Stores first consideration is given to the Safety, Convenience and Comfort of the General Public.

For your "Utmost Comfort" the Metropolitan Company have installed a SHELDON system of ventilation arranged to bring in fresh, pure air from out-doors in great quantity—10,000 cubic feet per minute—every hour of the day. The Metropolitan Company have done more than that—they have installed an air filter through which this great volume of air must pass to be cleansed—purified—and freed of dirt, dust, and soot such as is always floating in the air in all cities.

To give the best in ventilation the Metropolitan Company went 1400 miles to obtain it for you.

THE VENTILATING EQUIPMENT WAS DESIGNED

MANUFACTURED AND FURNISHED BY

**SHELDONS LIMITED**

GALT — ONTARIO — CANADA

—The—  
**STRUCTURAL  
STEEL**

Used in the

**Metropolitan Store**

At Charlottetown, P. E. I.

Was

Furnished By

**I. MATHESON  
and Co., Ltd**

ENGINEERS & BOILRMAKERS

NEW GLASGOW

NOVA SCOTIA

—The—  
**JOHANSON**

**Combination Water Tube  
Steel Boller**

HAS BEEN CHOSEN TO HEAT  
THIS NEW STORE OWING TO ITS

High Efficiency

Ability to Burn Any Fuel  
Construction

WORTH WHILE INVESTIGATING

MANUFACTURED BY

**BRUNELLE-BOUCHARD Ltd**

27 Saint John Street

QUEBEC

—The—  
**PINK  
LAURENTIAN  
GRANITE**

In the Store Front of the  
**Metropolitan Store**

Was Supplied By

**J. BRUNET & CO.**  
MEMORIAL CRAFTSMEN

675 Cote-Des-Neiges Rd.

MONTREAL, QUE.

—The—  
**LUMBER**

IN THE

**Metropolitan Store**

Was Supplied By

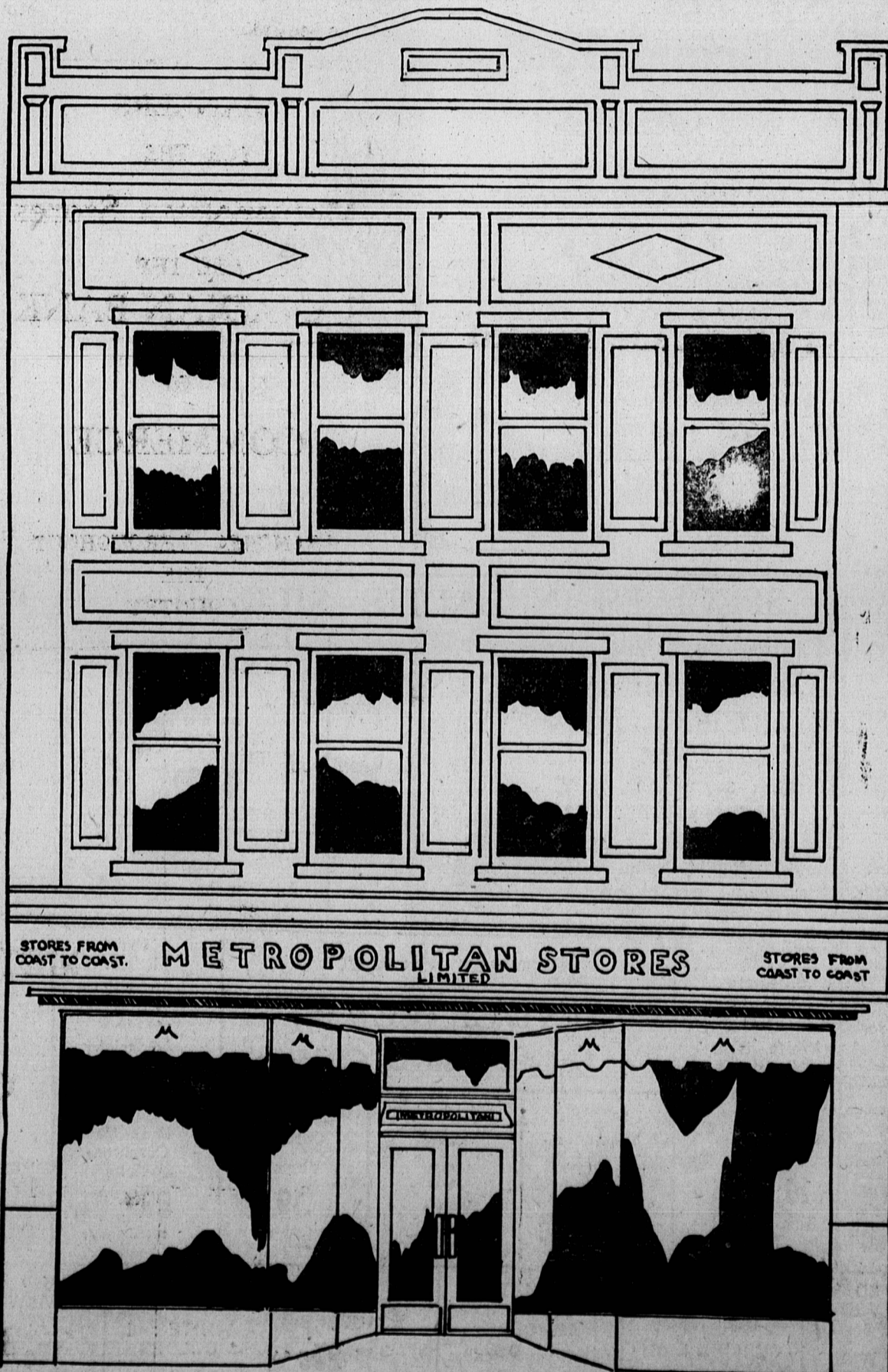
**L. M. POOLE & CO.**

PAOL'S WHARVES

CHARLOTTETOWN

P. E. ISLAND

TELEPHONE 172



REPRODUCTION FROM DRAWING BY WATKINS.

The Modern  
Thermostatically  
Controlled "Electro"  
Oil Burner

Used for the Steam Heating  
Plant in the

**Metropolitan Store**

Was Supplied and Installed  
By

**STANLEY, SHAW  
and PEARDON**

161 Great George Street

CHARLOTTETOWN, P. E. I.

—THE—  
**CONTRACTOR**

Who Rebuilt This Building  
Knew

—VALUE IN—

Hardware, Cement,  
Sheathing Paper,  
Nails, Paint, Etc

When He Made His  
Purchases From

**The ROGERS  
HARDWARE  
CO., Ltd**

THE GENERAL PUBLIC  
WOULD DO WELL  
TO DO LIKEWISE