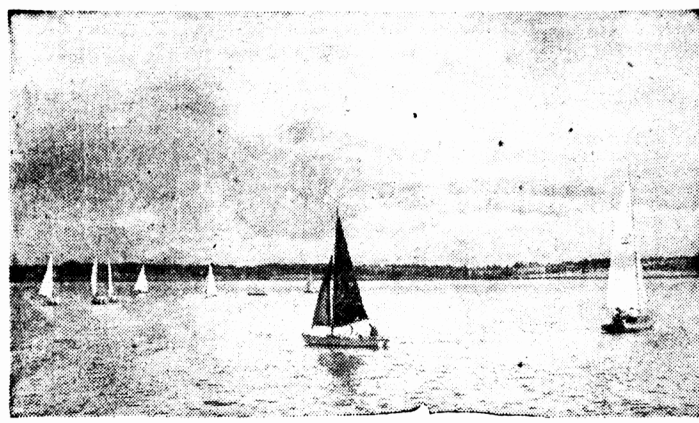
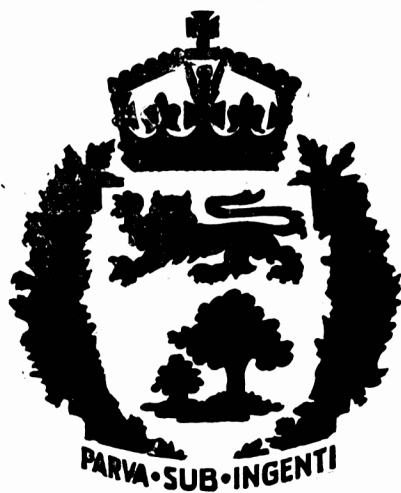


Quick Access To And From CANADA'S GARDEN PROVINCE



When the "Abegweit" goes into service between Cape Tormentine and Borden one of the big features will be the easy, quick access to the Million Acre Playground in the Garden of the Gulf. . . . Prince Edward Island. . . . The Cradle of Confederation. . . . the spot where the Dominion came into being.

In its quiet, restful atmosphere a Nation was born and since that day back in 1864 when the Fathers of Confederation held their first meeting in the old Province House this little Island Province has played a big part in Dominion affairs.

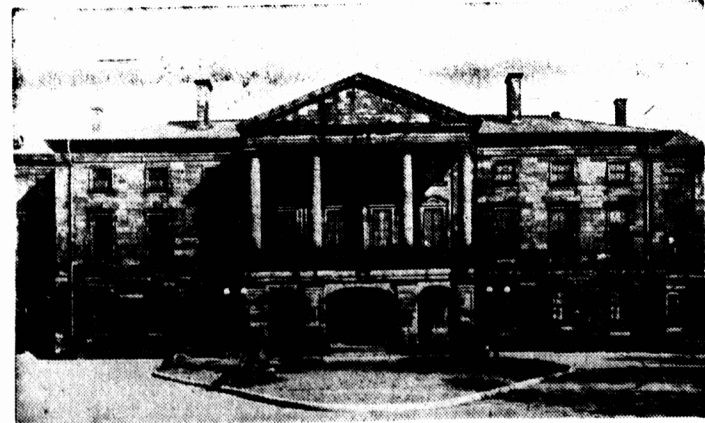
Outstanding are the attractions this little Province offers tourists for the spending of a restful, free-from-care holiday. Long velvety beaches with warm salt water; excellent fishing spots that abound with tasty trout; roads flanked by gorgeous scenery that make motoring a pleasure; fine hotels, equally fine tourist cabins which will allow you to enjoy the cool, restful evenings this Tourists' Paradise offers, as well as the home-cooked food for which the Island is noted.

A friendly, hospitable people will make a lasting impression upon you and will keep in your mind the words Jacques Cartier penned on a visit in 1534—

"The Fairest Land That It May Be Possible To See"

**Paved Highways
Fine Sandy Beaches
Up-To-Date Hotels
Native Foods
Tourist Cabins
Deep Sea and Trout
Fishing
Fine Climate
Hospitable People**

**Come And See For
Yourself What This
"TOURISTS'
PARADISE"
Offers
Write Now For Full
Particulars
To
The Prince Edward Island
Travel Bureau
101 Queen Street
CHARLOTTETOWN, P. E. I.**



INSERTED BY

Prince Edward Island Travel Bureau
101 QUEEN STREET, CHARLOTTETOWN