

# Chase & Sanborn's

## HIGH GRADE COFFEE

Some people buy Chase & Sanborn's Coffee because of its exquisite flavor—others, because of its strength—some, "just because they like it."

All of them, because no other coffee suits them so well.

### GUARDIAN BUSINESS LOCALS

**MORNING DAILY OR RURAL DAILY PER WORD** (six words to each line) one cent for one insertion, two cents for three insertions, four cents for a week, six cents for two weeks, eight cents for three weeks, ten cents for a month, sixteen cents for two months, twenty cents for three months, thirty cents for six months, and thirty cents a year.

Double Rates for Black Type - Minimum Charge 15 cents With order  
Ten (10) per cent Discount on Above Rates For Cash With Order.

Come where the variety is greatest and exclusiveness prevails. See Paton & Co.'s new suitings before the first choices are all sold. Jas. Paton & Co. 9-15dtf.

New striped broadcloths, chevron and white cord suitings just opened at Paton & Co.'s. Prices from 65c yd up to \$1.75. 9-15dtf.

Our ladies' coat dept. is a very popular spot these days, and notwithstanding the fact that it is still early in the season quite a number have already been sold. The styles and materials are simply splendid while the prices are more moderate than ever. Come in and make an early selection. M. Trainor & Co. 9-9dtf.

Our lines of fall hosiery are superb. We aim to have the best in quality and dye at prices a little lower than elsewhere, and our customers may be sure to get the best for their money. M. Trainor & Co. 9-12dtf.

By express today a shipment of ladies' popular fall outing hats. The correct shape \$1.00 each. Jas. Paton & Co. 9-15dtf.

The correct outing hat for ladies, comfortable and stylish, fur felt, brown, white, champagne, crimson and other leading shades. Come quick if you want one. Jas. Paton & Co. 9-15dtf.

The ladies are delighted with our new Fall coats, hundreds to select from and each and every one a beauty of its kind. Loose fitting, semi fitting and fitting coats in all the seasons most fashionable fabrics, at prices which are decidedly economical. Select yours today. M. Trainor & Co. 9-12dtf.

Attention—horsemen and professional men that do a lot of driving, we have a driving glove made from dog skin, heavy for fall. This glove we can recommend for \$1.70, others not so good at \$1.80 and \$1.25. Good fall colors. Jas. Paton & Co. 9-15dtf.

The Delinquent for October is a splendid Fall Fashion number. Every dressmaker should have it. Every housewife ought to have a copy. Only 25c by mail for 25c. Now on sale at Carter's Bookstore. Fashion sheets free. 9-15dtf.

### GUARDIAN CLASSIFIED ADS

Co-operative Advertisements Only. Headings Arranged Alphabetically

**MORNING DAILY OR RURAL DAILY PER WORD** (six words to each line) one cent for one insertion, two cents for three insertions, four cents for a week, six cents for two weeks, eight cents for three weeks, ten cents for a month, sixteen cents for two months, twenty cents for three months, thirty cents for six months, and thirty cents a year.

Double Rates for Black Type - Minimum Charge 15 cents With order  
Ten (10) per cent discount on Above Rates For Cash With Order.

### FEMALE HELP

WANTED—A good plain cook. Good wages. References required. Apply to Mrs. H. S. Pethick, 82 Weymouth St. 9-15dtf.

WANTED—Several bright girls to learn Millinery. Apply to M. Trainor & Co. 9-14dtf.

WANTED—By Sept. 22nd a girl for general housework in a small family. Apply at 39 Grafton St. 9-14dtf.

WANTED—AT once a saleslady for Jas. Paton & Co. None but those having experience need apply. 9-10dtf.

WANTED—A cook by 29th September. Apply to Mrs. F. L. Haszard, 235 Euston St. 9-14dtf.

WANTED—Girl for general housework in a small family. Apply at this office. 8-29dtf.

WANTED—A competent girl for general housework, an elderly person preferred. Apply Mrs. W. F. Parker, Confectionery, Queen St. 8-29dtf.

HELP WANTED—At once several good table girls, two chamber maids, also a good smart bell boy. Apply at Hotel Victoria. 9-11dtf.

WANTED—An experienced saleslady for dry goods store. Apply to Trainor & Co. 8-14dtf.

WANTED—A girl for general housework, must understand cooking and have references. Good wages, no washing. Apply at 22 Pleasant St. 9-14dtf.

### HORSE SHOER

HORSE SHOEING, all kinds while you wait at J. A. Henderson's. 9-14dtf.

### MISCELLANEOUS

A FILE of this paper can be seen at the office of Messrs E. & J. Hardy & Co., 30, 31, and 32 Fleet Street, London, England, free of charge; and that firm will be glad to receive news, subscriptions, and advertisements for the Charlotte Town Guardian. 9-24dtf.

**LIBERAL REWARD**—Offered for any information leading to the return of a four or row-boat, taken from the park landing, on the night of Sept 11th. Boat was 15 ft. painted red inside, white outside with a red stripe running around. Apply to Two Mac's drugstore. 9-15dtf.

### MALE HELP

WANTED—At once, a boy about 16 years of age to learn a trade. Must have a fair education and good habits. \$2.50 a week at beginning. Leave name, age and particulars, at Guardian office. 8-27dtf.

**BOY WANTED**—Smart steady boy about 16 years of age, one who understands looking after horses and cattle, and can make himself generally useful about a house. Apply at this office. 7-8dtf.

### TO LET

TO LET—A cottage pleasantly situated on Hillsboro Square, containing eleven rooms. Apply at 301 Kent St. 9-15dtf.

TO LET—That most desirable residence No. 2 Water St., near Esplanade. For further particulars apply on premises. 9-10dtf.

### LOST

LOST—Between Henry Mutch's Southport and City, or on Grafton or Prince St., black Voile jacket. Finder please leave at A. Gates, Grosvenor. 9-14dtf.

### CHARLOTTETOWN MARKETS

Correct for every Wednesday and Saturday's issues.

Beef quarter	6 to 8
Beef small	6 to 12
Flour	2.80 to 2.90
Oatmeal	3 to 5
Cabbage	3 to 5
Beets per bunch	3 to 5
New onions per bunch	3 to 5
Butter Fresh per pound	24 to 25
Eggs	19 to 20
Lamb per lb.	10 to 15
Chickens per pair	50 to 75
Straw per cwt.	30 to 35
Hay (new) per cwt.	36 to 46
Black Oats (new)	42
White Oats (new)	40
Lettuce	5 to 8
Cauliflower	5 to 8
Potatoes	22
Gooseberries	7 to 8
Plums	10 to 12
Pork	8
Turnips	2

### Allan's Champagne Kola

A delicious healthy drink.

## JAS. KELLY & CO

St. Joseph, Lewis, July 14, 1903, Minard's Liniment Co., Limited. Gentlemen,—I was badly kicked by my horse last May and after using several preparations on my leg nothing would do. My leg was black as jet. I was laid up in bed for a fortnight and could not walk. After using three bottles of your MINARD'S LINIMENT I was perfectly cured, so that I could start on the road. Yours truly, W. A. V. R.

### Vinegr Malt Cider White Wine

Can rely on being treated fairly and squarely in anything they buy from us as manufacturers agree to replace articles not proving satisfactory—rings, bracelets, lockets, chains, cuff links, brooches, Regina and Waltham watches. The best of Silverware.

### R. E. MUTCH & Co.

GRAFTON ST. P. O. Box 1075 Phone 28 Free Phone to buyers

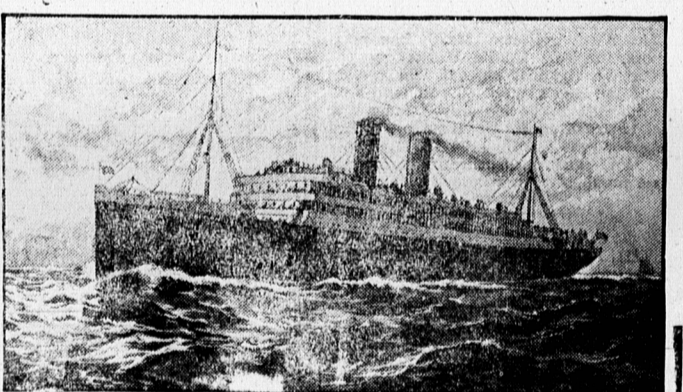
### Hotel Dufferin

ST. JOHN, N. B. Foster Bond Co.

### EMPERESS OF BRITAIN

IS THE WORD

They are constructed in accordance with the latest designs in naval architecture, and embrace every advantage that constructive genius and operative experience can devise, and manned by thoroughly trained and reliable officers and crews, they attain the maximum of safety.



### "UNEQUALLED" IS THE WORD

With her arrival at Quebec at seven o'clock last night the Empress of Britain added one more to the list of record breaking runs she has made across the Atlantic during the last two years, making the voyage in 6 days, 3 hours and 25 minutes.

### If On Business Or Both

Take an "Empress" The Acme of Perfection

Each COMFORTABLY ACCOMMODATES 351 1st Cabin 330 2nd Cabin 1050 3rd Cabin

For Plans, Rates, Descriptive Literature, and Full Information, write W. B. Howard, D.P.A., C.P.R. St. John N. B.

### 600 Cases Crown Glass Fruit Jars

Any quantity you want at Pints 5 cts each. Quarts 6 " " 1-2 gals. 7 " "

## John Connolly & Co

Queen Street Charlottetown Phone 264 dmwfff

### CHAS. F. DAVISON.

Funeral Director and Embalmer.

Office, Show Rooms and Residence, opposite Baptist Church. Equipment All promptly attended to at any hour of the day or night. Telephone, No 289.

### CANADIAN PACIFIC RAILWAY

## Toronto Exhibition Excursion Fares

FROM Charlottetown.

\$24.05 Going Aug. 27, 29, 31, Sept. 1, 3, 5, 9 and 10  
\$19.85 Going Aug. 28 and Sept. 4

All Tickets Good for Return Leaving Toronto, SEPTEMBER 16th 1908.

Purchase your Tickets to read via The Canadian Pacific Railway Short Line ONLY ONE NIGHT ON THE ROAD.

### Farm Laborers Excursion

Advertised for Sept. 5th

## Is Cancelled

B. HOWARD, D.P.A., C.P.R.

### Montreal Excursion

Going SEPTEMBER 17, 18th, & 19th  
Good for return until October 5th, to Port Huron, Detroit, Saginaw, Bay City, Mich., Grand Rapids, Mich., Chicago St. Paul and Minneapolis and Cleveland, Ohio.

### INTERCOLONIAL RAILWAY

will sell round trip tickets from Charlottetown P.E. I. to MONTREAL Proportionately low fares from all stations Campbellton and East.

### SPECIAL EXCURSIONS

September 17th, 18th, and 19th. Good for return until October 5th, to Port Huron, Detroit, Saginaw, Bay City, Mich., Grand Rapids, Mich., Chicago St. Paul and Minneapolis and Cleveland, Ohio.

### P. E. I. RAILWAY

Commencing Monday, June 29th, 1908 trains of this Railway will run as follows:

Trains Outward		Trains Inward	
Read down	Read up	Read down	Read up
Tu. Mo. Di. W. Sa. Su. P.M. A.M.	Tu. Mo. Di. W. Sa. Su. P.M. A.M.	Tu. Mo. Di. W. Sa. Su. P.M. A.M.	Tu. Mo. Di. W. Sa. Su. P.M. A.M.
7:00 8:45 10:15 11:45 1:15 2:45 4:15 5:45 7:15 8:45 10:15 11:45	7:00 8:45 10:15 11:45 1:15 2:45 4:15 5:45 7:15 8:45 10:15 11:45	7:00 8:45 10:15 11:45 1:15 2:45 4:15 5:45 7:15 8:45 10:15 11:45	7:00 8:45 10:15 11:45 1:15 2:45 4:15 5:45 7:15 8:45 10:15 11:45

### Ch'town Steam Navigation Co

The Steamer "Northumberland" will leave as below daily, except Sunday From Pictou about 4.30 p.m. for Charlottetown, Monday, Tuesday, Wednesday, Thursday, and Friday. From Charlottetown for Pictou at 8.30 a.m. Monday, Tuesday, Wednesday, Thursday, and Friday. From Charlottetown for Pictou at 8.30 a.m. Monday, Tuesday, Wednesday, Thursday, and Friday. From Charlottetown for Pictou at 8.30 a.m. Monday, Tuesday, Wednesday, Thursday, and Friday.

### Ch'town Steam Navigation Co

The Steamer "Northumberland" will leave as below daily, except Sunday From Pictou about 4.30 p.m. for Charlottetown, Monday, Tuesday, Wednesday, Thursday, and Friday. From Charlottetown for Pictou at 8.30 a.m. Monday, Tuesday, Wednesday, Thursday, and Friday. From Charlottetown for Pictou at 8.30 a.m. Monday, Tuesday, Wednesday, Thursday, and Friday. From Charlottetown for Pictou at 8.30 a.m. Monday, Tuesday, Wednesday, Thursday, and Friday.

### Makes a Creamy White Loaf

You can tell the quality of the flour by the color of the loaf. Notice the rich, creamy white appearance of the bread when "North West Gem" is used—convincing proof of its superior quality. Test it for yourself. Order from your dealer.

### "North West Gem" Flour

BRANT-WOOD FLOUR MILLS, Ltd. Brantford, Canada

## THE CUP

that cheers—but not inebriates. The famous Dominion Blend Tea (REGISTERED) Get this brand from your grocer no substitutes.

### For Sale

1 Carryall \$80.00  
1 Buggy \$50.00  
Both these carriages are out of the paint shop this summer and are nearly as good as new. Also one mare 11 years old by Trainor's Frenchman, dam by Jenkins old dam. This mare is one of the best readers on P. E. I. Price \$100.00. Apply to J. M. NICHOLSON 202 Kent St. City

### Dominion Atlantic Railway

and Steamship Lines to Boston via Yarmouth The popular Fast Line Between Yarmouth, Nova Scotia and Boston via Yarmouth, Halifax, and Boston. TRAINS leave Halifax, daily except Sundays, Mondays, and Wednesdays for Yarmouth making connection at Yarmouth for Boston. MIDLAND DIVISION—Trains of the Midland Division leave Yarmouth daily except Sunday for Yarmouth at 7.45 a.m. and 5.15 p.m. and from Yarmouth at 6.30 a.m. and 2.30 p.m. connecting with the Yarmouth and Yarmouth Railway. Trains with Express trains to and from Halifax for Yarmouth. The Royal and U.S. Mail Steamships PRINCE GEORGE and BOSTON The fastest and finest Steamers plying between the Maritime Provinces and Boston. Leave Yarmouth for Boston daily. Except Sunday on arrival of Express Trains from Halifax. Returning leave Long Wharf Boston, daily except Saturday. Passengers arriving in Halifax next day at 4.10 by the Royal and U.S. Mail Steamship PRINCE GEORGE and BOSTON. For further information, Reservations, etc., write or telegraph R. PARKER, Agent, Gen. Pass. Agt. Charlottetown, N.S. P. GLEKINS, General Manager

### C.P.R. ATLANTIC STEAMSHIPS

EMPERESSES

Montreal and Quebec to Liverpool Sat. Sept. 12, Lake Erie Fri. Sept. 18, Empress of Ireland Sat. Sept. 26, Lake Manitoba

FIRST CABIN Empresses 90.00 and up Lake Manitoba 80.00 and up. SECOND CABIN Empresses 48.75 and up Lake Champlain 47.50 and up Lake Erie 42.50 and up THIRD CABIN Empresses 28.75 and up Lake Steppes 27.50

For full particulars apply to J. B. MATTHEWS, Agent.

### Eastern Steamship Company

Hon. William T. Cobb and Calvin Austin, Receivers International Division

COASTWISE SERVICE—Commencing Wednesday, June 24th, steamers leave St. John at 8 a.m. Mondays, Wednesdays and Fridays for Lunenburg, Eastport, Portland and Boston. DIRECT SERVICE—Commencing Monday, June 30, Express Steamship "Calvin Austin" leaves St. John at 7 p.m. Tuesdays and Saturdays for Boston.

COASTWISE RETURNING—Steamers leave Union Wharf, Boston, at 9 a.m. Mondays, Wednesdays and Fridays. Portland same days at 5 p.m. for Eastport, Lunenburg and St. John. DIRECT SERVICE—Commencing Monday, June 29, Express Steamship "Calvin Austin" leaves Union Wharf, Boston, at 12 noon Mondays and Thursdays for St. John. Through Tickets on sale at principal rail road stations and baggage checked through to destination. All freight except live stock is insured against fire and marine risk. C. F. LAUREN, Agent. W. G. LEBLANC, Assistant Agent, St. John, N.B. 6-10dtf

### Plant Line

Commencing Sept 18th, special round trip rates will be in effect by this line at \$11.50 Charlottetown to Boston and return. Ticket good for thirty days from date of issue. S. S. Halifax sails from here every Friday at noon, returning sails from Boston every Tuesday at noon. For all information apply Wm. Monbourquette, Agt. H. L. Chipman, Estr Mgr, Plan Wharf Halifax N. S. 5-7rdthm

### Furness, Withy & Co., Ltd

## STEAMSHIP LINERS

London, Halifax and St. John, N. B. From London. (Via St. John) From Halifax. (Via St. John)

Aug. 13—Rappahannock	Sept. 9
Aug. 17—Kanaqua	Sept. 13
Aug. 21—Uluda	Sept. 17
Sept. 12—St. John City	Sept. 28
Sept. 16—Liverpool via St. John's Nfld.	Oct. 3
Aug. 16—Halifax City	Sept. 2
Aug. 30—Shenandoah	Sept. 16

TO HAVE DIRECT SERVICE TO

St. John City, "Kanaqua", "Shenandoah", and "Rappahannock" have accommodation for a limited number of saloon passengers. S. S. "Uluda" has excellent first-class passenger accommodations. FURNESS WITHY & CO., LTD. Agents, Halifax, N.S.

### Moir's Chocolates

A box of Moir's chocolates disappears suddenly in the home of lovers of high-class bonbons. All hands are eager for a share of these deliciously wholesome confections.

The richness and smoothness of the pure chocolate coatings and the rare delicacy of the exquisitely flavored centers form a combination too fascinating to resist. just get a box and try them.

MOIR'S, Limited HALIFAX, N.S.

P. E. I. Representative, H. I. Beer, Summerside, P. E. I.

### Farm For Sale

Splendid house, large barn, 200 acres of choice land, one half covered with hard and soft wood, yielding highest returns in lumber and one half cleared and in excellent heart, well watered. Will be sold with or without crop. Inspection invited. CHAS. S. WRIGHT Centerville, Bedouca.

### Plant Line

Commencing Sept 18th, special round trip rates will be in effect by this line at \$11.50 Charlottetown to Boston and return. Ticket good for thirty days from date of issue. S. S. Halifax sails from here every Friday at noon, returning sails from Boston every Tuesday at noon. For all information apply Wm. Monbourquette, Agt. H. L. Chipman, Estr Mgr, Plan Wharf Halifax N. S. 5-7rdthm

### S.S. "CITY OF GHENT"

From Halifax every Tuesday morning. From Charlottetown every Thursday morning, calling at Port Hawkesbury, Sheet Harbor, Canso, Arichat, Port Hood, Isaac's Harbor and Summerside. For further information apply to CARVELL BROS.,

### Eastern Steamship Company

Hon. William T. Cobb and Calvin Austin, Receivers International Division

COASTWISE SERVICE—Commencing Wednesday, June 24th, steamers leave St. John at 8 a.m. Mondays, Wednesdays and Fridays for Lunenburg, Eastport, Portland and Boston. DIRECT SERVICE—Commencing Monday, June 30, Express Steamship "Calvin Austin" leaves St. John at 7 p.m. Tuesdays and Saturdays for Boston.

COASTWISE RETURNING—Steamers leave Union Wharf, Boston, at 9 a.m. Mondays, Wednesdays and Fridays. Portland same days at 5 p.m. for Eastport, Lunenburg and St. John. DIRECT SERVICE—Commencing Monday, June 29, Express Steamship "Calvin Austin" leaves Union Wharf, Boston, at 12 noon Mondays and Thursdays for St. John. Through Tickets on sale at principal rail road stations and baggage checked through to destination. All freight except live stock is insured against fire and marine risk. C. F. LAUREN, Agent. W. G. LEBLANC, Assistant Agent, St. John, N.B. 6-10dtf