

PRIZE ESSAY

"Why I Consider Summerside an Ideal Location"

(a) Summerside, the chief city of Prince County, in the Province of Prince Edward Island, has some points to justify the word "romantic"—its many streets, its old and new styles of architecture, besides the feeling of tender regard for it springing up in the breasts of its citizens, all justify the word.

Truly, Summerside did merely grow up these few years, now there's many large and fine buildings, such as:—A railway station, the Prince County Hospital, a High School, a Court House, a Post Office, and several churches, of different religions.

One of the most important organizations in the town is the Red Cross. Since the beginning of the war, this Society has been tireless in its endeavor to provide comforts for those who are fighting our battles across the water.

(b) Summerside is very pleasant for situation, her cosy residences, sheltered in a profusion of shade trees, make her a delight to look upon and has caused tender feelings of strong regard to spring up in the bosom of her citizens.

(c) Summerside offers every advantage in the way of water, electric light, good sidewalks, telegraph and telephone services, daily communication with the mainland by a beautiful steamer and everything else to be found in a well regulated town, where people live to enjoy life.

One of the main reasons why Summerside is a good place to be located on, is the settlement and growth of the neighboring provinces to the south. Another reason is the deep water,—always between three and four fathoms—of the channel of Bedeque Bay. A third is that the inner bay is well land-locked, the only exposed side being to the south-west, and that bearing not that of the prevailing winds.

Another reason is the highland forming a water-shed between Bedeque Bay and Richmond Bay, thus giving a gentle southerly slope to the south.

I hope this beautiful little town will always grow as it did these years. It will soon be one of the large cities of the Empire.

By JOSEPHINE RICHARD.



The Nicely Located House of Wm. A. Stewart, Notre Dame St.

HIS WINTER QUARTERS

"Why is that pig always trying to go into my room?" inquired the summer boarder. "Do you think he has taken a fancy to me?"

"It's his room during the winter," whispered the hired man, cautiously.

NO LIGHTWEIGHT

Miss Alice Cherry, who weighs 530 pounds and claims the humble—in these days of ethereal vogue—title of "heaviest woman in New York," is now on her way to Buenos Ayres, where she is to be a star feature in an Argentinian show.

MEN AND WOMEN

The Tsar of Russia was recently visiting a field hospital, and, as is frequently the case, he had donned muff, with a view to rendering himself less noticeable.

Stopping by a wounded soldier who was being attended to by the doctors, he gazed at him pityingly.

"Well," said the orderly, "why, then, do you not look at him now, my son? He is there by your side."

DINNER'S SPOILED

She was very anxious to learn all her new duties properly and to please her mistress. No, ladies, don't get excited; this is only a story.

"Please, mum," she said one morning, as she cleared the breakfast table, "when I bring the dinner in ought I to say, 'Dinner's ready' or 'Dinner's served'?"

The mistress looked up coldly from her sewing.

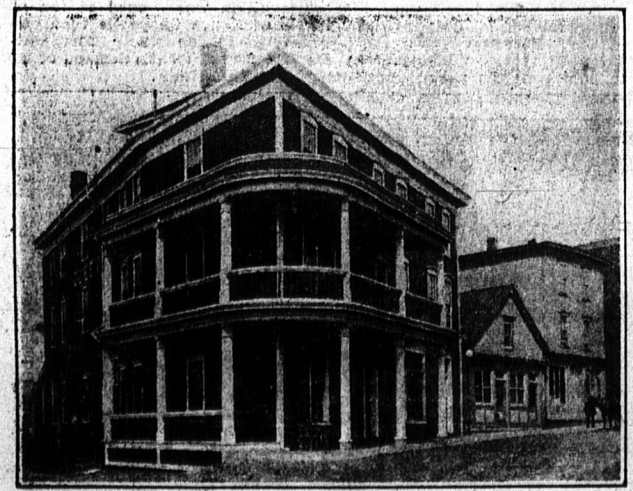
"Well, if it's anything like it was last night, Mary," she said firmly, "you'd better say, 'Dinner's spoiled!'"

TEACHER, KNOW THYSELF!

A list of thirty-one questions designed to test the efficiency of public school teachers is as follows:—

- Do you work harder than anyone else in the business?
Have you learned to plan your day ahead?
Are you tactful, courteous and pleasant?
Can you be optimistic under all circumstances?
Have you a fixed goal in line with your supreme talent?

- Do you know where your greatest power lies?
Do you believe in your own future?
Do you realize which of your habits, thoughts emotions make you efficient?
Are you informed on personal efficiency?
Have you secured the best advisers and associates?
Do you wish your rivals well and never speak ill of them?



While in Summerside stop at the QUEEN HOTEL. Excellent cuisine. Hot and Cold Baths. Rates \$2 per day



It's the Talk of the Town, and no Wonder

So is our clothing. The warm, comfortable suits and overcoats we make for zero weather speak eloquently of good fit and elegance as well as of genuine all-wool materials.

The Up-to-Date Tailor Colin Milligan

Monuments In Marble, Granite and Freestone. We employ competent workmen and buy the best material. Our monuments are superior in Beauty, Style and Finish.

R. H. MORRISON & CO. Opposite Railway Station, Summerside

DRAGGED IN THE DUST (From the Montreal Mail.)

During a recent suffrage parade a man carried one of the banners for his wife, who was not able to march.

When they reached home the husband said: "Well, Mary, how did I march? Did I do the job right?"

"You carried that banner in the most disgraceful manner I ever saw," replied the angry spouse. "You dragged it in the dust all the way. What did you mean by doing that?"

"Didn't you see what was printed on that banner?" he asked. "No, what was it?" "Well, on the banner was printed this sign: 'Men can vote. Why can't'"

Bring Your Chicken and Fowl TO Gallant's Cannery

SUMMERSIDE Not later than December 30th Highest prices paid and quality considered.

BUY YOUR XMAS

Candies, Fruit, Drinks, Tobacco Cigarettes and Cigars

Central Street Grocery

James Tamlyn Proprietor

BRACE, McKAY & CO., LTD.

Skating and Hockey Season is Here

(Let us Help You Enjoy it)

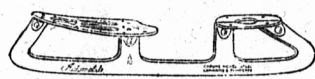
The rivers and ponds are now frozen over and in a few days the Skating Rinks will be open for the season. We have the best line of Hockey Boots and Skates on the market, and although there has been a great advance in the price of high grade steel, we are selling our skates at last year's prices.

Space does not permit us to illustrate our complete line, but a visit to our Hardware Department will show you that we have the skate you want.

Hockey Skates and Boots would make an ideal Christmas gift.

Parcel postage on 1 pair Skates or Boots, within 20 mile limit is 7c; beyond 20 mile limit 18c; Boots and Skates together 10c and 26c respectively.

AUTO A.



Blades of the best Chrome Nickel Steel 3-16 wide, laminated tempered, nickel plated, and very highly polished. Sizes 9 1/2 to 11 1/2. Price ... \$3.00

LADIES' "AUTO"



especially for use on Ladies' boots. The blades are of high grade Carbon Steel, very beautifully finished. It is the lightest and strongest Ladies' Skate made. Sizes 9 to 10 1/2. Price ... \$2.50

CYCLE "25"



This is the best medium priced hockey skate we carry. Blades are of Carbon Steel, tempered, concaved and nickeled. The strength and finish of this skate makes it splendid value. Sizes 9 to 11 1/2. Price ... \$2.00

SPECIAL VALUES



No. 05—As cut, Cast Steel, polished ... 35c
No. 05 1/2—Same as No. 05, except all parts nickel plated ... 80c
No. 04 1/2—Hardened Carbonized Steel Nickel plated ... 79c

CYCLE PLEASURE



Blades of high grade Carbon Steel. Tops of hard tough steel bracketed solid to the blade. All nickel plated and highly polished. Sizes 9 to 10 1/2. Prices ... \$1.50

THE "YUKON"



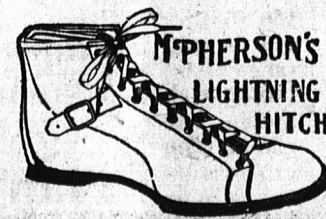
Blades of special concaved tapered steel, nickel plated and polished. This is a strong, well finished skate and remarkable value. Sizes 8 to 12 1/2. Price ... \$1.25

"ARCTIC" SPECIAL



Blades of high grade steel, polished and nickel plated. This skate will give perfect satisfaction and stand a lot of hard usage. Sizes 9 to 11 1/2. Price ... \$1.50

McPherson's Celebrated Hockey Boots



McPherson Lightning Hitch Hockey Boot is without a doubt the best on the market, the leather and workmanship are such that the boot will stand the test in the roughest games. We have a complete stock of all sizes at finest prices.



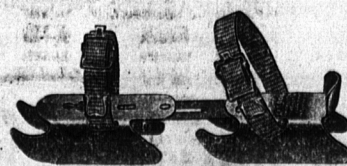
RUBBER PUCKS

No. 1 Regulation—Soft Rubber 50c
No. 2 Regulation—Soft Rubber .25c
The Juvenile, 3/4 x 2 1/2 ... 10c

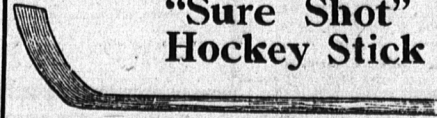


BOB SKATES

Bob Skates for children will extend from 6 to 9 in. 39c. per pair with straps.



"Sure Shot" Hockey Stick



Boys 10c
Regular sticks from 25c to 75c.

AUTO TUBES

This is the only Tube Skate on the market that will give perfect satisfaction. "Guaranteed." Sizes 9 to 11 1/2. Price ... \$5.00



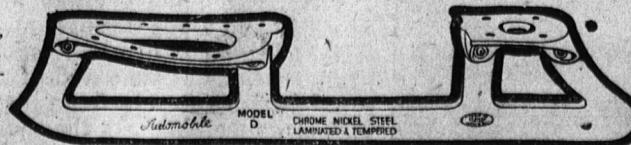
Famous Automobile Aluminum Top Hockey Skates

MODEL "D"

Blades—Chrome nickel steel, tested, double tapered to 3/8 in. running surface, specially tempered, and toughened, tapered at toe and heel, polished nickel plated and buffed.

Tops—Aluminum alloy specially cast and tempered, tough and strong, highly polished, exceedingly light.

This model is unexcelled in popularity. Sizes 10 1/2 to 11 1/2. Price ... \$6.00



MODEL "C"

Blades—Special Chrome nickel steel, 3/4 in thickness, laminated, and carefully tempered, concaved, polished, plated and buffed.

Tops—Highest grade aluminum alloy, specially cast, highly polished, very strong and light. The famous aluminum top adds distinction and lightness not attained in any other skate at the price.

Sizes 9 1/2 to 11 1/2. Price ... \$5.00

BRACE, McKAY & CO., LTD. The Store That Saves You Money