



What's in this Annual Report to Interest me?

... our Company at the present time is in the strongest position in its history.

—President E. G. BAKER 101st ANNUAL MEETING

1947 was a great year for Canada Life policyholders.

Our field representatives arranged more new protection for people in all walks of life than in any previous year.

Living policyholders received an average of about \$60,000 every working day.

Here are some additional highlights of the year's operations:

Table with 2 columns: Category and Amount. Includes Insurance in Force, New Insurance, Gain in Insurance in Force, Total Assets, Gain in Assets, Paid to policyholders and beneficiaries, Interest earned.

A summary of the 1947 results will be mailed to all policyholders

THE CANADA LIFE ASSURANCE COMPANY

A MODERN COMPANY — OVER A CENTURY OLD

JOHN MacKINNON, C.L.U., Supervisor S. W. WILLIS — R. E. YOUNKER R. S. RAMSAY, Summerside

SUMMERVILLE W. I. On February 2nd the regular monthly meeting of the Summerville W. I. was held at the home of Mrs. A. Murphy.

report saying three members to be sent treat. The sec'y read a letter from King's Co. Hospital Ladies Auxiliary, asking Institute to take part in maintenance of hospital.

National Anthem brought meeting to a close. Lunch was then served by Mrs. Murphy assisted by members. Mr. Murphy then read a well worded tribute to the women for the excellent work they are doing in the community.

ELLIOTT-McMAHON WEDDING

A wedding of much interest to her many friends in Emerald and Kinkora took place on January 29th, 1948 at 8:30 a.m. o'clock in St. Thomas Aquinas Church, St. Antoinette's St., Montreal.

"Do we have to argue at breakfast too?"



Does it take "just a word" to start a quarrel these days? When sleep fails you—and morning finds you as moody and irritable as the night before—don't let this state of mind become a habit!

this time-proven tonic does much more than just build up a run-down system, by increasing appetite and improving digestion. You rest better, too! And the Vitamin B1, iron and other essential minerals it contains are frequently prescribed to supply elements your system often lacks.

Dr. Chase's NERVE FOOD FOR NEW PEP and ENERGY



Board Of Trade 1948 Committees

The following committees were submitted and approved by the members of the Summerside Board of Trade at the monthly meeting on Thursday night.

Agriculture: T. J. Inman, Chairman; P. M. McCaull, Vice-Chairman; R. A. Profit, J. Harrison McFarlane, J. C. Pillman.

Entertainment: Leslie Simmons, Chairman; Henry Gaudet, Vice-Chairman; George Hogg, W. E. Jenkins, J. W. Salter.

Town Improvements: L. R. Allen, Chairman; William Hayward, Vice-Chairman; George Key, Ernest Perry, Health Strong.

Air Service: A. R. Brennan, Chairman; W. M. Mellish, Vice-Chairman; E. P. Foley, Lorne Driscoll, Hugh Morrison.

Memberships: A. S. Hopkins, Chairman; J. L. Gorrill, Vice-Chairman; George Meikle, C. E. Jelley, Maurice Mill.

Community Music: Allison McLean, Chairman; Eric McKay, Vice-Chairman; George Higgins, Henry Wedge.

Transportation: Richard Hinton, Chairman; Fred Bell, Vice-Chairman; Lloyd Inman, T. J. Inman, Leslie Simmons.

Fisheries: Frank Cameron, Chairman; Lorne Driscoll, Vice-Chairman; W. E. Jenkins, R. E. Ellis, Lorne McFarlane.

Marine: J. E. Campbell, Chairman; Capt. Basil Kelly, Vice-Chairman; Leslie Simmons, J. W. Salter, Morley Bell.

Publicity and Tourists: V. Groom, Chairman; Harold Gaudet, Vice-Chairman; Dan Chan, J. L. Gorrill, Geo. Hogg, Allen Holman.

Mail Service: Leonce Arsenault, Chairman; William Hayward, Vice-Chairman; R. A. Horne, George Key.

National Affairs Committee: Donald Baker, Chairman; Edward E. Arnett, Vice-Chairman; W. E. Smallman, A. A. Scales, George Hogg.

Gorden

Mr. A. P. Ceretti left on Wednesday morning to spend a few days in Montreal.

Mrs. John MacKenzie of Gorden is a patient in the hospital at Summerside.

Mr. and Mrs. Don MacPherson of Gorden are spending a few weeks in Montreal.

Mr. Harvey Bernard, merchant at Gorden was a visitor to Charlottetown on Tuesday.

The Girl Guides of Gorden put on a benefit skate at the Borden rink on Monday night.

Miss Eva Trenholm who recently underwent an operation in the P. C. Hospital is recovering nicely.

Mr. Harry MacFarlane of Augustine Cove was business visitor to Borden on Thursday.

Mrs. John MacLusac of Borden spent a few days last week with her daughter Mrs. Frank Butler at Charlottetown.

Mr. Walter Farmer of the M. V. Abegweit who has been ill at his home here is improving and we hope to see him out real soon.

Mr. and Mrs. John Arsenault of Wellington are spending the winter with their daughter Mrs. Camille Arsenault and Mr. Arsenault at Borden.

Mrs. Cecil Stewart of Charlottetown spent Friday at Borden where she received a warm welcome from old friends and neighbors.

Messrs. Lloyd Inman, Norman MacWilliams and Major Inman of Borden who were recent visitors to Halifax returned home on Tuesday evening.

Mr. William Josey of Picou is spending some time with his daughter Mrs. Charles Love and Mr. Love at Borden where he is employed with the Foundation Maritime Co.

On Wednesday evening a friendly game of hockey was played in Borden rink between O'Leary Maroons and Borden Nationals. Over two hundred hockey fans attended the game which ended in victory for Borden by a 10-8 score.

The regular auction party of last week was held in the town hall on Thursday night under the auspices of the Women's Institute with eight tables playing. Ladies prize was won by Mrs. Nell Darrach, gents by Mr. Jos. Gallant.

With consolation prize going to Miss Rosie Ceretti and Mr. John Arsenault. The freestout prize was won by Mr. Emmanuel Gallant.

The regular auction party of last week was held in the town hall on Thursday night under the auspices of the Women's Institute with eight tables playing. Ladies prize was won by Mrs. Nell Darrach, gents by Mr. Jos. Gallant.

With consolation prize going to Miss Rosie Ceretti and Mr. John Arsenault. The freestout prize was won by Mr. Emmanuel Gallant.

JUST TOO OLD TIMMING, Ont. (CP) — When a horse fell down on the street here a veterinarian said the animal was suffering from "blackwater" or paralysis from inactivity. But a bystander had a different diagnosis. "He's old enough to vote," was the comment.

Second Great Revival

Bedeque United Church

The History of a Methodist Circuit in Prince Edward Island

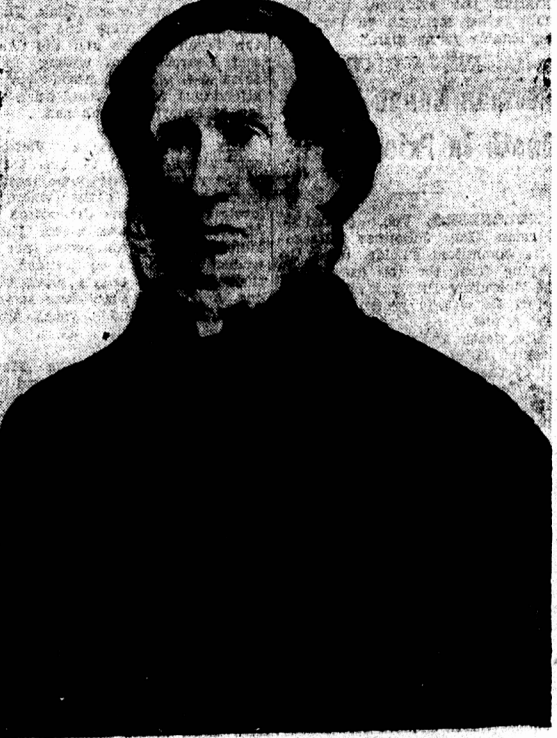
Tracing its Roots in the Cultural, Educational and Commercial Fields of the Community.

By E. S. D. CHAPTER FIVE (Continued)

In the ministerial succession, Rev. James Buckley followed Mr. Davies in 1840, coming late in the year and staying only till the next June. He was a relief substitute for Rev. James Henigar, who had received the appointment but for some reason did not wish to come to the Island.

Perhaps the five-room log house for the preacher at Lower Bedeque was a deterrent. It was certainly no attraction for a man with a family in a day when bigger and better frame-houses had mainly replaced the pioneer log-cabins.

Accordingly it was not surprising that Rev. Alexander W. McLeod, who came in 1841, told district meeting next year that Bedeque proposed to erect a "Mission House"



REV. JAMES BUCKLEY Superintendent Bedeque Circuit 1840-1841 Second term 1850-1852

at Searletown, and in 1843, announced the completion of such a minister's residence, "52 x 28 with 17 foot post," at the cost of twelve hundred dollars. A debt remained the first year of \$240.00, which the circuit proposed to pay off immediately.

The land on which the new mission house was built had been given to the Methodists by Heratio Mann and his wife Isabella, (through the good services of their attorney, Joseph Pope), in 1838, but was not registered till 1839. Heratio Mann was the son-in-law of James Searle, original landlord of the northern half of Lot 27 for whom Searletown was named. The ten acres of land were reserved (as usual in a Methodist trust deed) for the special use of the people called Methodists, to erect thereon chapel or preaching house, or to use as desired, agreeable to approval of conference, through the trustees or their agents duly and "Methodistically appointed."

Only ministers appointed by conference and preaching no other doctrine than that contained in Wesley's New Testament notes were to occupy the pulpit of any chapel that might be erected. Of the ten-acre tract one acre facing on the Seven Mile Bay Road was for a cemetery, while an adjoining acre was reserved for the erection of a school and master's house. Thought all these land was vested in the Methodist trustees yet the reserving of these two acres for more or less secular purposes may explain why Mr. Wilson in 1837 had reported a gift of only eight acres.

The location of the parsonage at Searletown, rather than at Bedeque, was probably an idea of the Tryon and Crapaud churches which wanted the pastor more centrally located. The move would doubtless have the support of rapidly growing Searletown where many strong Methodist families were settled. This settlement may indeed have been not only the geographical, but also the spiritual centre of the circuit at this time.

Missions Contributions

Bedeque circuit in 1843 raised nearly five hundred dollars towards its own expenses. Contributions for foreign missions received from those attending little Methodist chapels in England provided the balance of one hundred pounds. Bedeque conference collection (for-runner of the Conference Fund) amounted to \$18.00 in 1843. Mr. MacLeod's last year on the Bedeque circuit was spent in semi-retirement due to a throat affliction which prevented him from accepting Charlottetown as his next charge. He reported in 1843 that he preached five times a week on the circuit, in addition to leading classes, teaching, etc. For the next year, in view of his work and his afflictions, he was given the assistance of a young ordained man, Rev. George W. Wheelock who died the next year on a mission field in the Bahamas.

Rev. John Marshall came back to Bedeque in 1844, eighteen years after a previous pastorate. His second wife, Emily Mary, youngest daughter of Colonel John Frederick Holland of Charlottetown, was the first Island-born hostess in the circuit's parsonage. Her cousins who lived in Tryon were the landlords of half of Lot 28, while her father, Colonel Holland of Charlottetown, was one of the storm centres of the early political and social life of the colony. Colonel Holland was not always in accord with Methodist teachings on morals and behaviour, and possibly his daughter's earliest memory of Methodist pastors centered around the occasion in 1818 when her father hit Rev. John Fishpool who the previous year had been Bedeque's first settled pastor.

The incident took place on a Sunday evening in June when Rev. Mr. Fishpool returning to his lodgings from preaching, bravely stepped out in the street and stopped the Colonel, who driving in his carriage with some of his family, was out apparently for pleasure. The preacher had no sooner opened his mouth to point out his conduct as a breach of the Sabbath day when he received the slash of a whip in his face. "And," as Mr. Fishpool reported, "the Colonel drove on furiously through the streets of Charlottetown in his usual manner." It was not only an insult to the cloth but a grave breach of the peace. However his Majesty's Justices of the Peace seemed most reluctant to sit on a case against the Colonel whose fiery temper sometimes led to the extreme of challenging disagreeing Charlottetownians to duels. Both Dr. De St. Orel and Francis Longworth, Esq. refused to try the case, and the incident has been preserved only because of a petition for redress which Mr. Fishpool presented to the governor.

The outcome of it all is not known but it serves as a background for Emily Holland, who, born in Holland Cove, one of the stately homes of early Charlottetown, was in Bedeque only a little more than a year when her father, Colonel Holland, his temper possibly mellowed by the years, died in Charlottetown but a few miles from the fort where he was born in 1758, the first child of British parents on the Island.

Other special prizes such as rugs, bridges and hatters will be in the offering for the other classes at each day's racing.

Second Great Revival

Mr. Marshall came to Bedeque at the conclusion of the second great



It's such a real help in modern living that every up-to-date home should have the world-renowned Kruschen—mildly laxative KRUSCHEN.

For yourself and the family—Kruschen's aperient action is promptly helpful in relieving constipation and the drabby, dopey feelings that often go with it. Kruschen offers you these four advantages:

EASY TO TAKE—Dissolves quickly in water, or your morning coffee, tea or fruit juice. Most folks find the small morning dose is best.

WORKS FAST—Usually within the hour. Does not spoil your day.

GENTLE ACTION—Its formula is balanced to act gently, without discomfort.

TIME-TESTED—Over 300,000,000 packages sold throughout the world. Kruschen's formula is a unique blend of saline minerals, similar to those in famous medicinal springs.

That's why, when taken regularly, Kruschen is a help to better, brighter living. 25c and 75c at all drug stores.

revival which had spread through the whole circuit in the winter of 1844 under the inspired preaching of the junior man, Rev. George Wheelock whose name and memory came down the years in persons of George Wheelock Bentley of Margate, George Wheelock Cameron of Augustine Cove, and George Wheelock Multart of Cape Traverse, who were named in his honour by parents deeply thankful for the great spiritual harvest of that year.

The 1844 membership report, which showed an increase of one hundred and one over the previous year, gave three hundred and sixty-one members for Bedeque in contrast to Charlottetown's three hundred and twenty-five. The post revival slump the next year reduced Bedeque's members in full connexion to three-hundred and eleven, and thereafter Charlottetown remained the largest circuit on the Island.

Bedeque is mentioned in an interesting volume published in 1848—Memorials of Missionary Life in Nova Scotia (by Rev.) Charles Churchill, M.A., who having visited the Island when Spring came suddenly, coinciding apparently with Conference week in Charlottetown, wrote appreciatively of the wild cherry in bloom and the melodious piping of the frogs, which he declared were "the nightingales of Nova Scotia." His interests were broad, and included, besides mention of the Methodist chapels at Tryon, Bedeque and Crapaud, the discovery of "some remarkable fossil remains and silicified trunks of trees," at the last-named place. "The new residence for the missionary at Searletown received his unqualified approval; "delightfully situated and central to the work of the circuit."

For those who like statistics, Churchill's figures for the Bedeque circuit in 1844 showed nine hundred people attending the Methodist ministry in four chapels and eight other preaching places. Nineteen class-leaders and four local preachers assisted at the superintendent missionary in his work. Four Sabbath Schools with fourteen teachers had one hundred and forty-six pupils. Figures for Charlottetown, the only other Methodist circuit on the Island at this time, were very similar except that the Capital had twice as large attendance, and what was a still greater advantage, ten more local preachers than Bedeque.

A Slow Process

The building of churches on the Bedeque circuit was a slow process at this period. The plain finished meeting house of the eighteen forties was no cathedral of the middle ages that required decades for building, yet Tryon's second chapel, whose proposed construction was first reported by Rev. William Wilson in 1838, was not finished till 1844, when New London's first chapel was also mentioned as being completed, neither with any debt. The growth of membership at Bedeque, and perhaps a certain healthy rivalry between it and Tryon, would account for plans to replace the old Bedeque chapel with a new one. "These were still in the tentative stage in 1845, and not till District meeting the next year were precise dimensions, 60 x 38, quoted.

Bedeque's first Methodist chapel (but ninety per cent of the early churches of P. E. I. was built within sight of a river or open water) like most of its contemporaries which replaced was situated a little further inland to take advantage of the roads which had taken the place of rivers and shorelines as popular arteries of travel for church-bound folk. The new site for the church was one part of the original Major Hooper farm in that part of Bedeque known as Hooper's Corner, later Centreville, not a hundred yards from the Wright barn in which the first Methodist services had been held. The property, owned by Thomas Hooper, was regularly conveyed by a conference deed, which named as trustees Joseph Pope, William Wright, Stephen Wright Thomas Wright, Lemuel Hooper, George Clark and Stephen Black. The Wrights had lost the overwhelming majority they held on the first trustee board and only one of the new trustees, Stephen Wright Esq., sometime merchant, miller, farmer and Justice of the Peace, had served on the trustee board of the Lower Bedeque property. The Centreville deed unfortunately was never recorded and the title to the land, where the third church would also stand, is that of possession only.

(To Be Continued)

Stanley Notes

The many friends and neighbors of Miss Hamilton will be sorry to hear of her return to the P. E. Island Hospital this winter for special treatment and probably an operation in the near future. They sincerely wish him every success and an early return to his summer home at Stanley Bridge.

The genial mail carrier John McKay is still going strong on his sixth year, making his round trip between Clifton and Bradshaw station regardless of roads or weather. John has never missed a trip since taking over and is always happy and ready to serve his patrons at all times. Only a few people know what it is to turn out of your warm bed in the small hours of the winter mornings and make your own road over the drifting hills and valleys before daybreak when the mercury is whispering ten and twelve below.

The horse racing fans are figuring on a big day's racing Feb. 7 over the Stanley speed way. The free for all will call out the best from all sides and will be the main feature of the day. Special attention is drawn to the fact that the racing club president, Mr. J. E. Elliott has received a silver cup donated by Daniel McInneson of Regina. This special meeting will decide on the number of points the winning horse will have to his credit before he can claim possession of the valuable trophy. The donor of this fine masterpiece was very well known a few years ago when he served as police man in Kensington before moving to Western Canada where he became famous in many sports. At one time he held the wrestling championship of Canada and was champion heavyweight boxer of Regina. He spent a few pleasant weeks last summer at his former home in Springfield the guest of his brother, Nelson. His many friends will look forward to seeing him next summer.

Other special prizes such as rugs, bridges and hatters will be in the offering for the other classes at each day's racing.

EDISON WRIGHT, Kinkora

FARM FOR SALE

150 acres of land—110 in high state of cultivation; balance covered with wood and lumber. This farm is well watered, situated on improved road in Middleton, 1 1/2 miles from Kinkora. Near schools, church and shipping. Buildings in good repair, equipped with electricity and a new hot water heating system.

PROFESSIONAL CARD

T. Earle Hickey Chartered Accountant Office at 15 Granville Street Phone 575 Summerside

BOWNESS FUNERAL SERVICE and AMBULANCE

SUMMERSIDE DAY AND NIGHT Phone 77-1 and 77-3

PHILLIPS MILK OF MAGNESIA LAXATIVE