



"Fit as a fiddle" And always cool, in Penmans Lightweight Underwear

BIG LEAGUE BALL RESULTS

Table of baseball results for American League, International League, and National League, listing teams and scores.

CENTRAL GUARDIAN

CENTRAL PARISH, Church of Scotland, Services on Sunday, Nine Mile Creek, 11 a.m.; Canoe Cove, 7 p.m. J. E. Lamont, student.

POWELL CHURCH—S. School at 11 a.m. The Prodigal Son will be presented in song and story at 7.30 p.m. by the Y. P. S.

SUNDAY SERVICES—Services in York Pastoral Charge, Sunday, May 15, will be Central Church at 11 a.m. Pleasant Grove at 3 p.m. York at 7 p.m. G. A. Christie, Minister.

QUICK SERVICE sign painting. Call Scanlbury, Parker House. 3084-5-14-31

MARSHFIELD BAPTIST CHURCH—Service Sunday, May 15, at 3 o'clock. Dr. A. C. Vincent of Charlottetown will be the preacher.

HUNTER RIVER CHARGE—United Church of Canada, Services for Sunday, May 15: Wiltshire at 11 a.m. Church School at 10 a.m. Hampshire at 2.30 p.m. School organization at close. Hunter River at 7.30 p.m. Church School at 10.30 a.m.

FIRE ALARM—The firemen were called out at 9.30 yesterday morning for a roof fire on the tenement at 85-87 Richmond Street, near the corner of Powell. On their arrival they found a large portion of the roof burning briskly. A line of hose was necessary to extinguish the blaze.

BARN BURNED—A serious fire occurred at Conway last Thursday evening when the large modern barn owned by Mr. Austin Ramsay and situated on an adjoining farm to the homestead, was completely destroyed with all its contents of machinery. Fortunately the hay which was stored there had been removed a week or more ago. The cause of the fire is unknown. There was no insurance.

COUNTY MAGISTRATE'S COURT—Before Mr. Donald McKinnon, Magistrate for Queen's County, a case against a party from the southern part of the province, charged under section 307 of the Criminal Code, was remanded for one week. A further case against a party from the country charged with the commission of an act of indecency under section 206 of the Code, was fined \$10 and costs or thirty days in jail, a plea of guilty having been made. Mr. Alban Farmer represented the Crown and Mr. R. R. Bell, the accused in both cases.

AIR SERVICE STARTS—Flying a large six passenger Fairchild plane Pilot Walter Fowler landed yesterday at the Upton Airport from Moncton, bringing one passenger and inaugurating the passenger service which the Canadian Airways Limited is to carry on this season. According to the schedule, the plane will leave Moncton each day at 11 a.m. after the arrival of the morning train, arrive here at 11.50 a.m. leave again at 1 p.m. and reach Moncton at 1.55 p.m. connecting with the afternoon train. Yesterday was the first trip made since the airmail service was discontinued for the season.

ISLAND DELEGATES—The following are delegates from Prince Edward Island to the sixth annual convention of the Women's Missionary Society of the United Church of Canada, which is being held in New Glasgow, N.S. Mrs. H. Toombs, Kensington; Mrs. J. B. Andrew, East Royalty; Mrs. D. K. Ross, Cornwall; Mrs. D. M. MacLeod, Charlottetown; Mrs. Horace Wright, Bedouque; Mrs. Harold Newson, Charlottetown; Mrs. J. R. Saint, Montague; Mrs. G. L. Shean, Summerside; Mrs. Hazen Howard, Cornwall; Mrs. G. E. Boothroyd, Hunter River; Mrs. H. S. Bishop, Cavendish; Mrs. A. F. Baker, O'Leary; Mrs. G. H. Mutch, Kepnock; Mrs. John Andrews, Charlottetown; Mrs. L. H. Douglas, Georgetown; Mrs. W. A. Thompson and Mrs. E. H. Ramsay, of Charlottetown, are members of the Executive.

600 Skunks Killed Since Bounty Offered

The action of the Legislature at the last session in putting a bounty on skunks is greatly appreciated by the people living in sections where this animal has become a nuisance. As advertised in the columns of this paper, Mr. J. D. Jenkins, Gratton Street is looking after the work of identification and payments of the bounty. The identification parts are counted by an official of the Department of Agriculture in whose presence they are destroyed by burning.

Up to the present time, a period of three weeks, practically six hundred (600) skunks have been killed. These have been found mostly in that section of the country from French River, through Kensington, Freetown, Bedouque, and south as far as Cornwall and North River. Only three skunks have been found East and South of the Hillsborough River, two of these from East Baltic, and one from Montague. It is supposed that these have reached the points from sailing vessels.

It is estimated by those who have noticed the habits of the skunk that about 75 per cent are females. There would therefore have been about 400 litters which at an average of six to a litter which is by no means abnormal, it can easily be seen how necessary it was to use means to exterminate this pest.

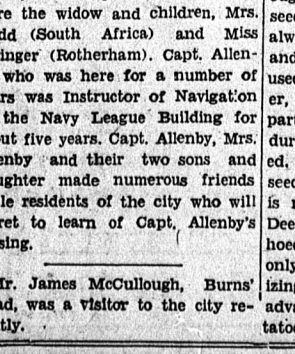
TAKEN BY MISTAKE—The City road grader which disappeared from Powell Wharf on Tuesday night has been located by the Mounted Police at a farmers residence in the country. It appears the farmer had been told by Government officials to take out a machine to do some work and that the farmers sons who had been sent for it had taken the City machine in mistake.

EXECUTIVE MEETING—At a meeting of the Executive Council last night the appointment of Mr. Edward Chandler, Charlottetown, as Electrical Inspector, having been recommended by the Board of Fire Underwriters, was duly made under the Electrical Inspection Act, 1932. Regulations under the Act were approved by the Council. Major Albert Cartwright was appointed a J. P. and a Commissioner to take acknowledgment of deeds for Prince County.

CAPT. M. C. ALLENBY, R. N.—The death took place at Plymouth, England, last Saturday of Captain Marmaduke Cecil Allenby, R. N., retired, who in 1907 married the second daughter of the late Rev. Hargreaves Heap, a former headmaster of the Rotherham Grammar School. Captain Allenby entered the Britannia as a cadet in 1887, and specialized in the navigating branch. He was navigator of various ships, including the battleships Ocean and Mars, and the battle-cruiser Invincible, and in 1912 was appointed Assistant Superintendent of Compasses, which post he continued to hold after his retirement. In May, 1914, he was appointed Superintendent of the Chart and Chronometer Depot at Sheerness, and held that post all through the War and until 1921. He was promoted to the rank of captain on the retired list as from the date of the Armistice. A keen cricketer, he was a member of the M.C.C. of the Hampshire Hogs, etc., and played for the Navy at Lords in 1901 and 1911; and for Hampshire, Devon and Cornwall, and the United Services. He leaves a widow, two sons, and one daughter. The interment took place with Naval honours at Plymouth on Wednesday. The principal mourners were the widow and children, Mrs. Kedd (South Africa) and Miss Stringer (Rotherham). Capt. Allenby and their two sons and daughter made numerous friends while residents of the city who will regret to learn of Capt. Allenby's passing.

Mr. James McCullough, Burns' Road, was a visitor to the city recently.

BRINGING UP FATHER



EARLY

(Continued from Page 1)

and heavy even though there have not been any heavy rains in May. This type of weather sometimes deceives many in that the ground dries out more quickly than they would expect. At the Experimental Station work was started in the gardens last week. Fertilizer was applied to the experimental pastures and we have been planting turnip stockings this week to produce disease resistant turnip seed. The land has worked wonderfully well and wheat, oats, barley and mangels have been sown.

Heavy Rainfall

"The rainfall of March and April was much heavier than average, and will provide an abundance of moisture to start the earlier sown crops. We have observed from trials will different dates of seeding that wheat and oats that were sown just as early as the land could be worked to advantage have produced the heaviest yields. There are many different ways of knowing when land is fit to start the teams on it; one of the best is to take a handful of soil, squeeze it, and if it crumbles when the hand is opened, the field may be harrowed.

"The condition and character of the soil will determine which cultural implement should be used first. We have found it a good practice to start cultivation on a late ploughed sandy loam soil with a double angle scrape of the double disc-harrow. This saves almost one-half of the turning, and cuts the sod at two different angles, pulverizing the land without backsetting the sods next the dead furrows. To do this the land should be friable; if there are damp spots it would be better to use the spike harrow on them before putting on the disc.

"The double angle way of harrowing a rectangular field is so useful and time saving that the following illustration may assist you in preparing your land this season. When you enter the field, drive your team directly from one corner anglewise to the opposite corner, turn and come right back to the point from which you started, driving parallel to the first harrow out and lapping one disc. Turn a quarter turn across the harrowed area and drive at right angles to the strip you have harrowed until you come to the unharrowed area, then turn a quarter turn and make your second round to the further corner. If you always cross the ends by keeping inside of your former harrow track on the ground already harrowed, and at right angles to your long harrowed strip, you will eventually complete two scrapes of the harrow over the entire field by driving from one of the corners you did not touch when you first started, to the fourth corner of the field. A few turns around the outside of the field, finishes up the headridges for both angle scrapes. With horses it saves time and harness and is much easier on the horses and teamster. With a tractor it saves all awkward turns and will prepare the land more quickly and bring it into the proper tith for a seed bed with less work than by harrowing lengthwise or crosswise.

Spring Tooth Harrow

"When the land has been ridged during the winter to save it from washing or to have it dry out earlier in the spring, then a scrape of the spring tooth harrow lengthwise has produced the best results. This can be followed with a double angle scrape to advantage. Thorough cultivation in preparing a seed bed in Prince Edward Island always pays. The implements used and the number of times these are used must be decided by the owner, since they will depend upon the particular soil and the weather during the period the land is worked. We would suggest that when seeding out, a fine surface condition is necessary for the grass seed. Deeper cultivation is required for hoed crops. The plough is second only to frost for thoroughly pulverizing the soil and can be used to advantage when preparing for potatoes or roots. When land is worked before it is fit, and becomes lumpy, the roller can be used to advantage between harrowing operations. We find it well to roll land as soon as it is ploughed, and again just before seeding with a drill, after the land has been worked to the proper tith for a seed bed.

Seeding

With cereals the best returns have been secured by seeding in the following order: Wheat, oats and barley. Buckwheat may be ripened if sown any time before July 25. Huron and Early Red Fife are among our best main crop wheats. For late seasons or where an early harvest is preferred, Marquis and Garnet have proven satisfactory. A seeding of one bushel and three pecks per acre, sown with a drill, or two bushels sown broadcast, has given good yields of grain and has given the grass and clover a fair chance to establish itself.

"We have found Victory and Banner the two leading varieties of oats for this province. For late land or very late seasons Alaska has given most satisfactory results. When seeding out to grass we suggest two bushels and two pecks of oats when sown with a drill, and three bushels per acre when sown broadcast.

Generous Seeding Important

"In seeding out to grass we have found all three grains, wheat, barley and oats, satisfactory, provided the grain is not sown so thick that it will smother the grass and clover. Our experiments would indicate that it pays to be generous in seeding grass and clover. Generally heavy seeding gives greater assurance of a good yield, with fewer years of poor crop. We have used ten pounds of timothy, eight pounds of red clover and two pounds of alsike. This mixture has given the best hay and the heaviest yields. The timothy might be reduced slightly, and on good, rich loam soils one-half of the red clover might be replaced, advantageously, by alfalfa. We have been using alfalfa in this way on the Farm rotations for several years, and the alfalfa is gradually gaining a foothold.

Seeding

With cereals the best returns have been secured by seeding in the following order: Wheat, oats and barley. Buckwheat may be ripened if sown any time before July 25. Huron and Early Red Fife are among our best main crop wheats. For late seasons or where an early harvest is preferred, Marquis and Garnet have proven satisfactory. A seeding of one bushel and three pecks per acre, sown with a drill, or two bushels sown broadcast, has given good yields of grain and has given the grass and clover a fair chance to establish itself.

"We have found Victory and Banner the two leading varieties of oats for this province. For late land or very late seasons Alaska has given most satisfactory results. When seeding out to grass we suggest two bushels and two pecks of oats when sown with a drill, and three bushels per acre when sown broadcast.

Generous Seeding Important

"In seeding out to grass we have found all three grains, wheat, barley and oats, satisfactory, provided the grain is not sown so thick that it will smother the grass and clover. Our experiments would indicate that it pays to be generous in seeding grass and clover. Generally heavy seeding gives greater assurance of a good yield, with fewer years of poor crop. We have used ten pounds of timothy, eight pounds of red clover and two pounds of alsike. This mixture has given the best hay and the heaviest yields. The timothy might be reduced slightly, and on good, rich loam soils one-half of the red clover might be replaced, advantageously, by alfalfa. We have been using alfalfa in this way on the Farm rotations for several years, and the alfalfa is gradually gaining a foothold.

Seeding Roots

"Mangels require a long growing season and should be sown early. We have obtained good stands by supplementing twelve to fifteen tons of manure with about 750 pounds of a 3-10-3 turnip fertilizer. Most soils would produce equally good results from 500 pounds of a 4-6-6 mixed fertilizer, which would supply about the same nitrogen and potash per acre as the above fertilizer. Mangels do not require much phosphoric acid as do turnips, but we have found that farm crops in Prince Edward Island all respond to generous applications of superphosphate, and therefore we have been using the same turnip fertilizer for all root crops. It is made up of 120 pounds sulphate of ammonia, 500 pounds of super-

Smoke Buckingham and Smile



20 For 25¢

Buckingham is mild, mellow and satisfying.

phosphate and 50 pounds of muriate of potash per acre. This, with a light application of barnyard manure has produced heavy crops of roots. Mangels should be sown quite thick in the row. The seed will germinate more quickly if soaked for a few hours in luke warm water. It should be covered an inch or more, and the soil rolled to press it firmly about the seed.

Planting

"We have had best results with potatoes planted after the soil has warmed up so that the set will start at once and grow fairly rapidly. We like to get the manure out, for potatoes and have it well worked into the land from two to three weeks before planting. Certified

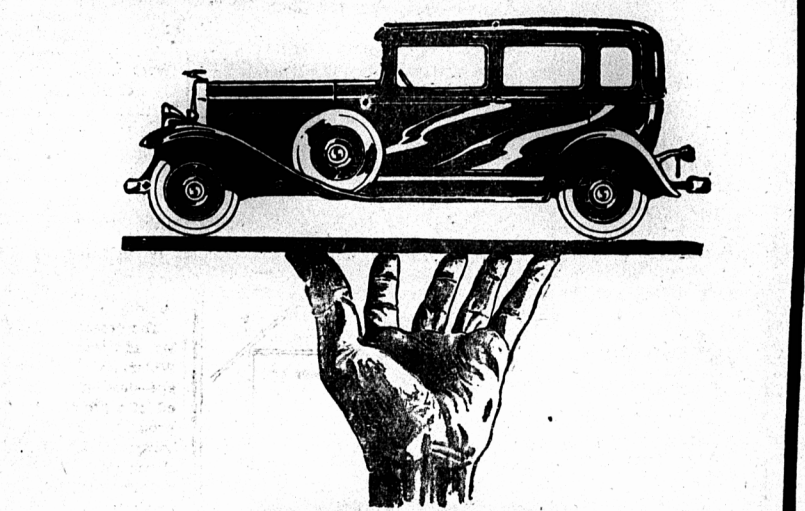
seed should be used. We believe it will pay you to treat it with mercuric bichloride. Use a fairly large set and leave plenty of space between the rows for cultivation and spraying. If your land is rich and well fertilized, crowd your plants in the rows to increase the yield of marketable potatoes.

BARLEY

The Department of Agriculture is receiving inquiries for Charlottetown No. 80 other variety of Two Row Barley.

Parties having same for sale should send their names stating quantity to the Department of Agriculture, Charlottetown.

DEVOTED TO QUALITY



THE NEW DURANT 6-18

Ride in the Durant "6-18" and realize that because of its superb performance - its easier riding qualities - its greater beauty - it stands pre-eminent in its price class. See the Durant "6-18" - ride in it - drive it and make your own comparisons.

Sold and serviced by Durant dealers everywhere PRODUCT OF DOMINION MOTORS LIMITED TORONTO (Leaside) CANADA

T. G. IVES LIMITED AUTHORIZED DEALER FOR CHARLOTTETOWN, P. E. I.

Reconditioned And O. K'D

We have 30 Used Cars that have been put in first class running order that must be slaughtered. Pick one out and if you are not ready to take delivery we will hold it for you by paying a small deposit. Here are some of the bargains: No. 47-A—Ford Roadster, Good running order... \$75.00 No. 6-A—Chevrolet Sedan. A real good looking car... \$150.00 No. 38—Pontiac Sport Sedan. Ask the price on this one. No. 41—Ford Tudor—run 5000 miles, \$150.00 cash—Balance GMAC. No. 11-A—Chevrolet Coach... \$125.00 No. 5—Nash Sedan—This is a bargain... \$300.00 These Cars are at the Universal Motors Showroom Kent Street. A. Horne & Co. Sold on convenient GMAC Terms.

Enter the \$3000.00 GOODYEAR PRIZE CONTEST NOW! Get your entry blank and directions from A. Horne & Co. Charlottetown

