

THIS WEEK ONLY!

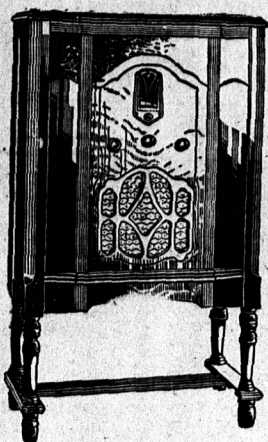
RADIO PRICES SLASHED!

A Sweeping Clean-Up of Demonstrators and Trade - Ins ELECTRIC MODELS BATTERY MODELS

\$ 2

Just Places Any RADIO In Your HOME To-Day

Balance Monthly NO INTEREST



MARCONI 1 Only! 6 TUBE CONSOLE Walnut Cabinet Thoroughly overhauled Works like new \$12

R31 VICTOR 1 Only! 6-LEG CONSOLE 1934 Model Brand New 5 Modern Hi Power Tubes Advanced Super Het Tone Control Automatic Volume Walnut Cabinet REG. \$74.50 \$57

DeForest Crosley 1 Only! 7-TUBE WALNUT CONSOLE Screen Grid Tubes Excellent tone Dynamic Speaker Powerful Tone Was \$179 \$37

R10 VICTOR 1 Only! 2-VOLT CONSOLE Hi-efficiency tubes Very powerful Excellent tone Complete with Air Cell B & C Batteries Tubes & Aerial \$57

SPARTON 1 Only! 7 2-Volt Tubes CARVED WALNUT CONSOLE Screen Grid Tubes Beautiful appearance An excellent Radio Complete with Air Cell B & C Batteries Tubes & Aerial \$67

KOLSTER 1 Only! 7 TUBES WALNUT CONSOLE Folding Doors Dynamic Speaker Beautiful Tone Performs like new Was \$215 \$33

R52 VICTOR 1 Only! 8 MODERN HI POWER TUBES Just like new 1933 Model Advanced Super Het Walnut Console Tone Control Automatic Volume Rubber Cushioned REG. \$109 \$69

FREED-EISMANN 1 Only! 7-TUBE WALNUT CONSOLE Drop Front and Doors Thoroughly reconditioned Was \$195 \$19

DRY CELL RADIOS With PHONES 3 & 4 Tubes MARCONI KENT CROSLY NORTHERN Operated on DRY CELLS excellent phone reception complete with Dry Cells B Batteries Tubes, Aerial, 19.90

Well Known TABLE MODELS 5 & 6 Tubes FREED MARCONI CROSLY KENT RADIOLA ERLA TABLE MODELS Complete with Speaker, Tubes, New Storage & B Batteries Aerial 27.98

Lose No Time First Here Get Best Choice

STEINITE RECORD COMBINATION 1 Only! 7 TUBE RADIO and ELECTRIC PHONOGRAPH housed in beautiful two-tone walnut console with folding doors. Was \$295 \$29

HOLMAN'S SUMMERSIDE

FOR EXPERIMENTERS Odd 3, 4 & 5 Tube RADIOS some in working condition worth many times this price for parts alone. 2.98

St. Patrick's Concert At Kensington

The variety concert presented in the King George Hall, Kensington, on March 16th was a grand success. Each number was enthusiastically received and enjoyed by an audience which completely filled every inch of space in the hall, long before the hour for the curtain to rise. The performers were principally local artists who have already won a reputation and those who made their first appearance before a Kensington audience made a most favorable impression. Excellent music was furnished by an orchestra composed of the following: Mrs. Edgar Hickey and Miss Mary Ready (soprano), Mrs. Hubert Gillis, Messrs. Gordon Tupper, Elmer Phillips, Brendan Driscoll and Roscoe Walker (violins), Messrs. Cedric Owen and Jack McGregor (banjos), and Mr. Roy Lockhart on the traps and drum. Special mention might be made of the part taken by the Kensington Chorus Girls. The Winter scene which was part of this act was very beautiful. Following is the program. Chorus - "O Canada," Indian River Club. Quartette - "Believe Me if all These Endearing Young Charms," (Misses Marion Kennedy, Miriam Proffitt, Messrs. Farman Phillips, Russel McKay. Irish Dance - "Miss Doris Sautter, hi Boy Blue," "Drill - "Little Boy Blue," Kensington Boys. Solo (selected) - Mr. Sebastian Johnston, Kinkora. Step-Dance - Mr. Kenneth McLean. Playette - "Money for Jam," Indian River Club. Solo - "Danny Boy" (by request), Mr. Roy Phillips. Intermission (Sale of candy). Chorus - "A Winter Wonderland," Misses Gertrude Gillis, Evelyn McNeil, Anna McLean, Jean Millman, Marjorie Kennedy, Erna Hughes, and Doris Saunders. Monologue - "My First Automobile Ride," Mr. Leslie Ramsay. Solo, (selected) - Mr. Garnet Proffitt. Song and Dance Sketch - Southern Entertainers. (Messrs. Sebastian Johnston, Norman MacDonald, Percival Killbride, and Russel McKay. Solo - "Mother Machree," Mrs. Kenneth McLean. Step Dance - Miss Stella Handrahan. Comedy Sketch - "Wanted a Wife, New Amman Club. God Save the King. Dr. W. P. McBride was chairman of the evening. Refreshments were served to the performers at the Brunswick Hotel, after the program. The concert was under the auspices of the Catholic Women's League of Indian River.

Girls Like Play For Comradship

NEW YORK, March 27 - (Canadian Press) - A national survey of girls' interest in sports has recently been made which brings out some interesting points on the matter of what sports have the strongest appeal. This survey was made by the national board of the Young Women's Christian Association. From thousands of business girls in all sections of the country came answers that showed that 77 per cent are actively interested in swimming, 70 per cent in riding and similar high percentages in tennis, hiking and other sports. The fact that there is not, today, opportunity for all girls interested in sports to take part in them, is one of the most impressive things the survey brought to light. Of the 77 percent of girls who wanted to include swimming in their program of living, only one third were able to do so much with it as they wanted because pools were not available to the other regular use or within easy access. The number of girls who rode frequently, among those keenly interested in it, was still lower. The inaccessibility of courts and courses similarly cut down the activity of girls interested in tennis and golf. The activities that the largest number of girls expressed interest in were individual or dual sports. Team sports ranked way down the list in popularity. Swimming, tennis, hiking, riding topped the lists from every group. The main reason for this preference is obvious, it is much easier to find one friend to play with you, or to go out by yourself than to assemble a group for a game. No matter how hard it is to make up your own mind when you want to be where you're doing what, it is a "group" problem to get together with one friend than with 10 other persons.

Eastern Locals

"SUBSCRIPTIONS to The Charlottetown Guardian may be handed to their Rep't Archie Hume Phone 47, or left at H. J. Mabon's Drug Store, Montague. L-7

"FUNERAL LARGELY ATTENDED - The adjacent settlements of Upper Montague, Victoria Cross, Greenfield, Queen's Road, New King's County, were all well represented at the funeral of the late John T. Mellish which took place on Monday, March 25th, and whose sudden passing in the prime of life but exemplified to an amazing degree the mysterious movements of the Almighty it must in this instance, be a source of considerable comfort to the widow and the fatherless to realize that the spirit of Christianity is not altogether dormant, and that there are those who share with them the great bereavement so suddenly thrust upon them.

"CONCERT ENJOYED - On Tuesday, March 12, a concert was held in Baltic Hall, under the auspices of the Red Point Women's Institute in aid of the recently organized club. A large crowd assembled and the sum of \$19, was realized. Mr. P. A. MacLellan, Souris, acted as chairman. The program was: Duet, "The Maiden in Gray," by George Jarvis and Martha Robertson; Recitation, "Martha Garrett; Dialogue, "Buying Eggs," by Estelle Campbell, Loreta MacLellan and Mabel Grant; Solo, "Martina Campbell; Duet, "Winter Wanderer," by George Jarvis and Martha Robertson; Dialogue, "Slow Peau and Past Beau," by Helen Robertson, Vilma Robertson and Alice Jarvis; Recitation, "Alice Jarvis; Monologue, "Elsie MacNeill; Recitation, "Gordon MacDonald. After the program, a very interesting illustrated lecture was given by Mr. Louis W. Roper, Dominion Livestock Promoter. Mr. P. A. MacLellan, Souris, gave a short address and a vote of thanks was tendered Mr. Roper, Mr. McLellan and the Women's Institute. The enjoyable evening was brought to a close by singing "God Save the King."

"B. Y. P. U. MEETING - The regular meeting of the Kingsboro B. Y. P. U. was held in the hall on Friday, March 22. A very interesting recreational program was staged by the Baltic group. Following is the program: Instrumental music, Round Table music, Debate, Solo, Edythe Bruce, Skit, Dr. Change's Office by Rupert Garrett Mabel Grant and Muriel Bruce, Duet, George Jarvis and Martha Robertson, Dialogue, "O'Hafferty Versus Fin Tun" by George Jarvis, Harold MacGregor, Vera Ching, Alice Jarvis, Lida Bruce and Wilbur Jarvis, Chorus, "Sidewalks of New York, Instrumental music, National Anthem. A special feature of the evening was the debate. The subject was "Resolved that the single state is more desirable than the married." The affirmative was upheld by Mr. Stuart MacGregor, leader, supported by Miss Mabel Grant. The resolution was opposed by Mr. Rupert Garrett, leader, supported by Miss Martha Robertson.

Capital Rises Where Jungles Guarded Lions

CAPE TOWN, March 26 - (CP) - Lusaka, a new city sprouting from the African bush, will supplant Livingstone as the capital of Northern Rhodesia, the British possession in the interior of southern Africa, about 2,000 miles north of Cape Town. It is expected Lusaka will be a conspicuous landmark on the Cape to Cairo air route. The builders are busy on the new \$2,000,000 town growing steadily where four years ago marked lions in a virgin bush of the jungle variety. This will be Lusaka, with macadamized roads, 12 miles of electric lines and six miles of water pipes. The city will have an up-to-date power plant sending light and energy through the capital and beyond. Shortly the government will move in from Livingstone 200 miles south-east in the Zambesi Valley. This administration under the British secretary of state for the colonies controls the destinies of 1,250,000 people scattered over a territory three times the size of Great Britain. The project of moving the capital from Livingstone was first mooted in 1926, two years after the British government took over Northern Rhodesia from the Chartered Company. Situated on a sand belt Livingstone was declared an exceedingly unwholesome place, especially in the hotter months. It was estimated the efficiency of government of the whole of Northern Rhodesia was 25 per cent below par. From an administrative point of view, Livingstone, in one corner of the territory, was condemned as being too far away from the main centres of population and development, and inaccessible to many of the native chiefs. Similarly, from the military standpoint, Livingstone was remote from all lateral communications and from any centre where the services of police were likely to be required. Professor S. D. Adshhead, the town-planner, and other engineers were brought from London. Their choice for the new capital fell on a well-drained ridge, affording glorious vistas and exploitable gradients, four miles long, one mile wide, and one and a half miles from the railway line and the existing township of Lusaka. In July, 1931, the first sum of money was voted for preliminary work and construction began. The ceremonial inauguration of Lusaka will be made in the week beginning May 29 and ending June 3. It was announced in the British House of Commons. Livingstone will continue as the seat for certain departments. Moreover, the government contemplates assisting Livingstone municipality financially and otherwise to compensate for the reduction of the European population caused by the removal of the capital to Lusaka.

Cancer a Major Problem

"For countless generations the prophets and kings of humanity have desired to see the things which men have seen, and to hear the things which men have heard, in the course of this wonderful nineteenth century. To the call of the watchers on the towers of progress there has been the one sad answer - the people sit in darkness and in the shadow of death. Politically, socially, and morally the race has improved, but for the unit, for the individual, there was little hope. Light in his path, religion in its various guises illumined his sad heart but neither availed to lift the curse of suffering from the sin-begotten race of Adam. In the fulness of time, long expected, long delayed, at last came the dawn of a new era. From the horn of Amalthea blessings which cannot be enumerated, blessings which have made the century forever memorable; and which have followed each other with a rapidity which has bewildered the world. Although these words were written many years ago they are more appropriate now than ever. Almost every day sees a new discovery in the field of medicine. There is no doubt that the present generation is superior physically to any that has preceded it. Moreover, the amount of physical suffering is less. Twenty-five years ago, the medical profession was faced with the almost insuperable task of controlling infectious disease. At that time only the disease was capable of prevention by means of vaccination, nameless and essential to the number of diseases which can be controlled through the use of vaccines and sera are numerous, and one may safely predict that the time will under control. The great majority of people living in this age should enjoy good health at all times and live to a ripe old age. In order to do so, it is essential that the same thought and care should be devoted to the body as is expended upon business success. It is essential in regard to the body and direct our efforts towards the conservation of energies. Infections vary in intensity. A cold in the head leaves no after-effects. The toxins of influenza may be difficult to overcome and require long recuperation. A minute dose of diphtheria toxin may cause death. Of all diseases, cancer has offered the greatest difficulties to the scientific investigator. The medical profession has succeeded in ascertaining the cause and providing a specific treatment for diseases such as cholera, plague, yellow fever, typhoid, small pox, diphtheria, and others, but the case of cancer, has made comparatively little progress. In 1933, 10,646 deaths from this disease occurred in Canada. This wastage of life must cease. Through the skilful use of modern diagnostic methods, cancer may be detected early and if treatment is provided at an early date, may be cured. Funds are necessary to provide additional diagnostic and treatment facilities. The King George V. Silver Jubilee Cancer Fund will be held on Friday, March 22, at the Lyric Theatre, Charlottetown. Please send your name and address clearly in order that you may not fail to receive your card of acknowledgment which bears the likenesses of Their Majesties, the King and Queen. Mark your envelope "Cancer Fund."

Culbertsons Defeat The Hal Sims In First Rubber

NEW YORK, March 26 - (AP) - Mr. and Mrs. Ely C. Culbertson won the first rubber last night in their 150-rubber match at contract bridge with Mr. and Mrs. P. Hal Sims. The rubber, requiring six hands, gave the Culbertsons a lead of 890 points. Each of the Culbertsons made a game. Sims made one game. Culbertson was set on and Mrs. Sims once. Mrs. Sims made one part score contract. The agile, daring Culbertson and Sims, the hayweight, with their wives as partners, opened the match tonight at Crockford's Club after a star dinner. The players sat within a glorified "squad circle" like a prize ring in the big card room on the club's second floor. In the corners within the silken ropes were four chairs for scorers and referees. A red wooden "bleachers" to one side held chairs for the spectators. On the first hand of the evening Culbertson was set one on a bid of two hearts. The hand follows: East - Mrs. Sims West - Sims Spade - K, Q, 2 Heart - K, 2 Diamond - A, Q, 7, 2 Club - A, 6 South - Culbertson Spade - 9, 5 Heart - Q, J, 10, 8, 7 Diamond - 4, 3 Club - K, 9, 7, 2 North - Mrs. Culbertson (dealer) Spade - A, 7, 6, 4, 3 Heart - A, 3 Diamond - K, J, 10, 8 Club - Q, 4.

The SNAPSHOT GUILD STUDY YOUR COMPOSITION

It is quite obvious that pictures of groups of people, or animals, such as the horses shown above, should be taken with the camera in a horizontal position, while arches, high waterfalls, etc., should be vertical. A high waterfall for instance, or a single figure standing in a high doorway, obviously should be taken with the camera in a vertical position, while, on the other hand, a landscape, a herd of cattle or a scattered group of people should be snapped with the camera held horizontally. Although the right camera position has been chosen, trimming may be advisable to cut out unattractive or unnecessary details which were not noticed in the finder when the picture was taken. This can be done by masking the film when it is printed to eliminate too much sky or objects at either side of the picture that may distract the attention from the view you had in mind at the time you took the picture. Occasionally, it is advisable to trim away the background altogether and mount the principal subject as a cut-out on the album page. Ovals, circles and panels are shapes which suit various types of subjects, circles making attractive frames for portraits. The size of the circle and its position with regard to the head must be left to individual taste, but where the head is not shown in full front view, more space should be left on the side towards which the face is turned. Trimming will often enable a drastic change to be made in the composition of a picture. Trimming the print at top and bottom to make a long, narrow, horizontal panel is often very effective, if you are not quite satisfied with your print use four pieces of paper as a mask and you will readily see if trimming will make a great improvement. Try it. JOHN VAN GUILDER.



It is quite obvious that pictures of groups of people, or animals, such as the horses shown above, should be taken with the camera in a horizontal position, while arches, high waterfalls, etc., should be vertical.

No-glaze PAINTS - VARNISHES - ENAMELS LEAVE NO BRUSH MARKS

Issue Warning To Stamp Goods

"The 1935 crop of maple syrup and maple sugar will soon be on the market for the sap is running in the maple trees in Eastern Canada, the sure and certain sign that spring is just around the corner" says R. L. Wheeler, Fruit Commissioner, Dominion Department of Agriculture. "It would be well for everyone who desires only the pure products to make it a point to see that the container is stamped 'Pure Maple Syrup' or 'Pure Maple Sugar' for many attempts are being made to sell adulterated maple products. 'The Maple Sugar Industry Act and Regulations' explained Mr. Wheeler 'state that no person shall manufacture for sale, sell or offer, expose or hold for sale any maple syrup or maple sugar that is adulterated, or any sugar or syrup resembling or being an imitation of maple syrup or maple sugar which is not pure maple syrup or maple sugar, unless the nature and origin of such sugar and syrup shall be clearly indicated.' Inspectors of the Department throughout Canada are keeping a sharp lookout for those violating the Act, the penalty for which is a heavy fine or imprisonment.

Weather Hurts Fishers' Trade

LOWESTOFT, England, March 26 - (CP) - Severe losses to the Lowestoft fishing fleet have resulted from continuous gales and a long spell of mild weather causing the fish to scatter. It has been estimated that at the end of February the catches had realized about \$200,000 less than at the corresponding period last year. In wintry weather the fish congregate in shoals, and although trawlers steamed hundreds of miles trying to locate the fish the catches for some weeks were negligible. In some instances vessels returned with catches that realized less than \$150, whereas normally they would have realized about \$750. In addition gear was lost that was worth hundreds of dollars.