

Ensure Finest Crops by sowing

ELE, BRIGGS' SEEDS

OLD EVERYWHERE IN CANADA

Send for ANNIVERSARY ILLUSTRATED CATALOG
ELE, BRIGGS SEED CO. LIMITED
"CANADA'S GREATEST SEED HOUSE"
HAMILTON TORONTO WINNIPEG REGINA

the first thing learnt is the time of day. A forefinger crooked and held up, then four fingers held up, then five fingers held up. If the system of communication has been in use for it means a quarter past four. The man the crash of the pupal; watches the movements of the men no human voice the tips. At first he can only hear the workers comprehend their meaning when they with one another the words are simple and the movements and movements are exaggerated. In a few days the men with perfect ease, during the study it along with intervals when the looms do not is weaving. Usually need all of his attention.

slow oven will not spoil your baking when you use

EGG-O Baking Powder

FROM YOUR NEIGHBORHOOD GROCER



Bake with BEAVER FLOUR

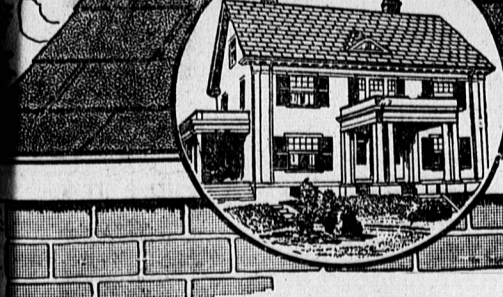
OBTAIN bread with that delicious home-made flavor—pies, cakes and pastry with tender, delicate, flaky crusts.

Beaver Flour is made from the finest of selected Ontario Winter Wheat combined with enough Western Hard Wheat to give it strength.

Beaver Flour is the original blended flour—and blended flour is recognized by all qualified experts to be the best flour for general baking purposes.

Don't hesitate! Try it! Sold by your grocer.

THE T. TAYLOR CO. LIMITED CHATHAM ONTARIO



A handsome roof that defies the weather

An added touch of beauty to any house is a roof of Brantford Asphalt Slates, which are in soft, harmonious shades of reddish brown and dark green. A very economical roof, because Brantford Asphalt Slates do not split, get loose, curl up, absorb water or rot. Moderate in cost, strongly fire-resistant, easily and quickly laid.

Brantford Asphalt Slates

are being used more extensively every year. If you are going to do any building this year or have an old roof that needs replacing, it will be to your advantage to drop in and see our lines of roofing.

Two new colors added, Tile red and Blue Black. Highest quality farm seeds, priced right.

GILL & LANTZ
Corner Gt. George and Fitzroy Charlottetown

Of Interest to Farmers

ALL FARM ANIMALS RESPOND TO CARE

Next to proper feeding of farm animals there is nothing that increases their returns more than proper care. All farm animals respond to good care and treatment. It is often the little things that count in the gross returns. These little things do not take much time for accomplishment in themselves but in the aggregate they add to the labor of the chore man and are often neglected.

Many times one hears the remark, "I am not equipped to give my stock the best of care." This may be true, but it is no excuse for not giving the best care possible. We think of a log barn with a straw roof and a dirty floor as being the most primitive sort of a stable for live stock. Yet the writer has seen animals housed under those identical conditions that were clean and comfortable. He has even seen creditable official records put on dairy cows stabled in such quarters. Lack of a modern stable is little enough excuse for not caring properly for the stock one owns.

Do not get the wrong impression and think that it is not a good idea for one to build good housing quarters for his stock as soon as it is possible. It will be money well spent for the stock and with better care there will come increased returns.

Whatever kind of a stable one has for dairy cattle, it should be warm, and should serve as a protection against sudden and severe changes in temperature. The inside temperature of the stable should be not over 60 degrees Fahrenheit, and not less than 48. Possibly the best temperature at which to keep dairy cows is 50 degrees. They will not feel being turned out a few hours a day in the winter time as much as if the stable were kept warmer. On the other hand, the owner will not have to feed extra carbonaceous foods to keep the animal's body warm as he would if the stable were kept at freezing point or below.

It is not so important to keep a herd of beef breeding animals in quite as warm quarters, yet one must not expect to get the best of returns if the herd is kept in a freezing stable. Sheep need only a shelter from storms. Hogs require a dry stable, one just warm enough so that there will be no steam when the animals bunch up as they sometimes do. Stock that is not healthy never produces at his best. A large percentage of disease in herds can be eliminated by using preventive measures rather than cures. These preventions are simple, such as ventilation, sunlight, and cleanliness. Once in a while every stable should be disinfected. Any stable can be ventilated, so also can any stable be well lighted. Ventilation and light can be easily installed by anyone handy with a saw and hammer. In case one does not care to do repair work, there is usually someone in the neighborhood who can do the work for a very reasonable charge. Along with ventilation and sun light goes cleanliness. Stables can be kept clean regardless of their construction and animals can be kept clean. Of course even under the best of management there will be some filth accumulate on the animals and it is no waste of time to clean it off. Every cow, pig, sheep or horse

Child Welfare

Articles on Child Welfare, Published by the Canadian Red Cross Society, Will Appear Weekly in This Column, Furnished by the Local Branch in This City.

HOW TO AVOID TUBERCULOSIS

A healthy body is the best protection against the tubercle bacillus or any other disease breeding germ. Therefore, keep well by observing the following rules:—

Live, work and sleep in rooms flooded with fresh air and purified by sunlight every day. See that your sleeping room is thoroughly ventilated. Use good, pure nourishing food, and thoroughly masticate what you eat. Cultivate cleanly, temperate and regular habits of living. Avoid breathing dust-laden air. In sweeping and dusting use a moist broom and duster. Don't spit on the floor of the dwelling, shop, school, public building or on the sidewalk. If you must do so spit in the gutter or into a spittoon. If you have a cough do not resort to quackery, but consult a physician or go to a dispensary. Make full use of good food, fresh air and rest. Live as much as possible in the open air, and have your sleeping room always thoroughly ventilated. For the protection of others when coughing or sneezing hold a handkerchief before your face.

CANADIAN CATTLE FOR THE BRITISH MARKET.

(Experimental Farms Note):

The British market requires each year about 300,000 store cattle and 400,000 fat cattle for immediate slaughter. Approximately two-fifths of the beef used at the present time by the British public is raised and fattened in the British Isles. This is usually beef of the best quality produced from stock with a century of good breeding and feeding behind it. The remainder of the beef used is imported largely from the Argentine, Uruguay, Australia and New Zealand. This comes as frozen beef and sells at a lower rate than the home-grown product. Canada cannot compete in this market because South American and Australasian farmers produce their beef entirely on grass and can sell it cheaper despite the longer ocean trip. We can, however, ship over as store cattle to go on the British pastures for summer fattening and grain or grass finished steers for immediate slaughter. The advantage of shipping live, fattened cattle is that when slaughtered they command somewhere near the high price paid for the best British-raised beef.

Store cattle for the British trade should weigh about 1100 pounds. They must be seamy, well-fleshed cattle with the quality and breeding necessary to make economical gains. Light cattle may be economically wintered and shipped overseas to go on the British pastures in April or May. Cattle for immediate slaughter should weigh 1300 pounds or over, at thirty months of age. They must be well-bred steers with the quality and finish necessary to dress out a high percentage of beef. The carcasses, narrow, light, rounded and partly finished animal has no place in this trade. Shipping charges from Canada to Great Britain are so high that it is not profitable to ship the very best. Steers of good breeding and quality, weighing 100 pounds or over in the fall in an unfinished condition, should put on 300 pounds during the six months of winter feeding. This should bring them well up to the standard required by the British market in May and June. Where there is plenty of good pasture available, another alternative is, to carry steers over the winter on a growing ration and finish on grass for the British fall market. All cattle intended for export should be dehorned.

WHAT CAUSES FARM HOUSE FIRES?

Every year almost every community is visited by one or more dwelling house fires. There is usually only one cause for such fires—the heating apparatus. The stoves or furnaces are usually to blame, and if it were possible to examine them, it would be found that they are in a very few seasons. It is well to examine these every fall before commencing to fire for the season and they should be gone over occasionally throughout the winter. These pipes become so thin that the hand is passed over them. When new pipes are put in, it is well to specify a heavier grade of metal than the tinmith will use if left to himself—24 gauge sheet iron will last a very much longer time than 26

Child Welfare

Articles on Child Welfare, Published by the Canadian Red Cross Society, Will Appear Weekly in This Column, Furnished by the Local Branch in This City.

HOW TO AVOID TUBERCULOSIS

A healthy body is the best protection against the tubercle bacillus or any other disease breeding germ. Therefore, keep well by observing the following rules:—

Live, work and sleep in rooms flooded with fresh air and purified by sunlight every day. See that your sleeping room is thoroughly ventilated. Use good, pure nourishing food, and thoroughly masticate what you eat. Cultivate cleanly, temperate and regular habits of living. Avoid breathing dust-laden air. In sweeping and dusting use a moist broom and duster. Don't spit on the floor of the dwelling, shop, school, public building or on the sidewalk. If you must do so spit in the gutter or into a spittoon. If you have a cough do not resort to quackery, but consult a physician or go to a dispensary. Make full use of good food, fresh air and rest. Live as much as possible in the open air, and have your sleeping room always thoroughly ventilated. For the protection of others when coughing or sneezing hold a handkerchief before your face.

CANADIAN CATTLE FOR THE BRITISH MARKET.

(Experimental Farms Note):

The British market requires each year about 300,000 store cattle and 400,000 fat cattle for immediate slaughter. Approximately two-fifths of the beef used at the present time by the British public is raised and fattened in the British Isles. This is usually beef of the best quality produced from stock with a century of good breeding and feeding behind it. The remainder of the beef used is imported largely from the Argentine, Uruguay, Australia and New Zealand. This comes as frozen beef and sells at a lower rate than the home-grown product. Canada cannot compete in this market because South American and Australasian farmers produce their beef entirely on grass and can sell it cheaper despite the longer ocean trip. We can, however, ship over as store cattle to go on the British pastures for summer fattening and grain or grass finished steers for immediate slaughter. The advantage of shipping live, fattened cattle is that when slaughtered they command somewhere near the high price paid for the best British-raised beef.

WHAT CAUSES FARM HOUSE FIRES?

Every year almost every community is visited by one or more dwelling house fires. There is usually only one cause for such fires—the heating apparatus. The stoves or furnaces are usually to blame, and if it were possible to examine them, it would be found that they are in a very few seasons. It is well to examine these every fall before commencing to fire for the season and they should be gone over occasionally throughout the winter. These pipes become so thin that the hand is passed over them. When new pipes are put in, it is well to specify a heavier grade of metal than the tinmith will use if left to himself—24 gauge sheet iron will last a very much longer time than 26



PANDORA

It is a real saving—to use a modern Pandora

The time comes when the old range becomes a waster of food and of fuel. What a nuisance it becomes! What a daily trial! Every day you put off replacing it with the modern Pandora, you add to your housework and your cost of living.

Ask McClary's dealer to show you the economy of the Pandora, the ease of operating it, its white nicked steel oven (washable). Its baking qualities women have known for a generation. Don't deny yourself the satisfaction of owning a Pandora range.

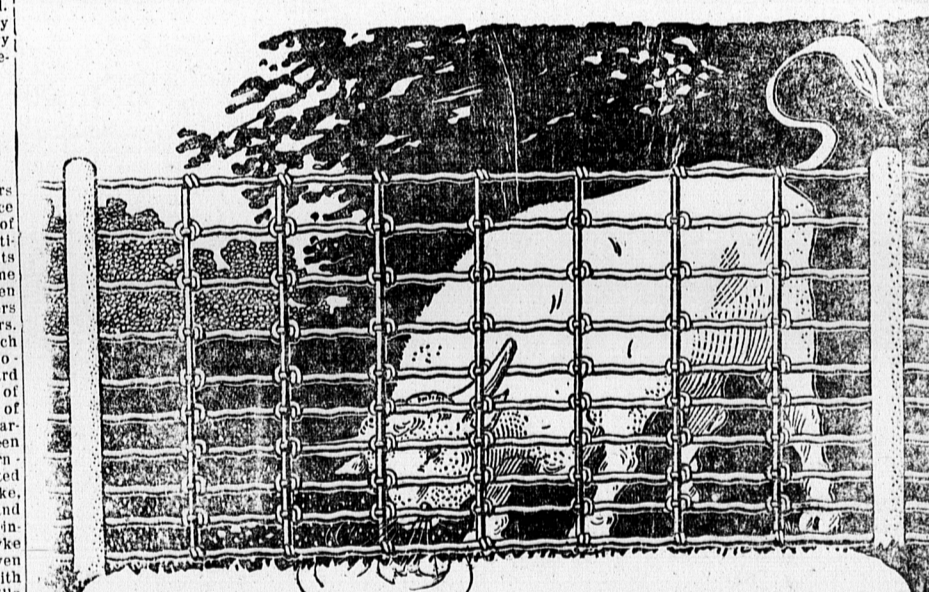
McClary's London, Toronto, Montreal, Winnipeg, Vancouver, St. John, N.B., Hamilton, Calgary, Saskatoon, Edmonton.

McClary's

THE ROGERS HARDWARE CO., LTD.

Agents and Distributors for McClary's Full Line

made by any cow in the province. Her dam, Miss Rooker Posch, has won first prize and championship at the Prince County Exhibition last year, and a number of his heifer calves from grade cows won honors at several school fairs last autumn. Breeders should look King over before mating their cows else highest seven-day milk records his worth. His first calf, a bull, where



Hasn't Broken Yet—and Never Will

Most wire fences are "good" wire fences until they are put to the test—and then you learn the difference.

Maritime Wire Fences never disappoint. They are made and sold on honor—our reputation is back of every inch. The quality is of the very highest—yet the price is no more than you would have to pay for the ordinary, make-shift kind.

Made of extra heavy, hard drawn, coil spring Steel wire. Verticals and cross wires rigidly locked—can't slip or work loose.

We have a splendid proposition for agents. Write for our illustrated Fence Book and Price List at once.

New Brunswick Wire Fence Co., Limited
MONCTON, N. B.



King Posch Rooker, the subject of this sketch has exceptionally good backing on his mother's side, being a son of Cornelia Rooker Posch, whose R.O.P. record at two years is 13568 pounds milk and 658.75 pounds butter. She is sired by Robert Tensen Vale, a proven son of Ida Rooker 2nd Vale, and is full sister to Minnie Vale of Vic-

Pale Faces And Worn Out Nerves

Due Solely to Weak, Watery Blood—A Tonic is Needed

Anæmia—literally impoverished blood—comes on so stealthily that it is often well advanced before its presence is recognized. Feelings of fatigue and discomfort are the earliest manifestations of the trouble and these are seldom taken seriously. Gradually small tasks become an effort and exertion causes the heart to palpitate violently. The complexion becomes sallow or pale and there is loss of weight. The nerves grow weak and the victim displays irritability under slight provocation and is extremely sensitive to noise. The appetite is feeble and indigestion often follows.

A condition of anæmia calls for a tonic, one that will enrich the blood and strengthen the nerves, and for this purpose there is nothing can equal Dr. Williams' Pink Pills. These pills give the blood all those missing elements necessary to give strength to the nerves, color to the cheeks and nourishment to starved organs and tissues. Miss Margaret J. Fraser, R. R. 2, Thessalon, Ont., has proved the value of this treatment. She says: "I was very pale and weak. My blood was poor and I was very nervous. I lost my appetite, my feet and ankles were swollen and was in a very miserable condition. A friend advised me to try Dr. Williams' Pink Pills and I got two boxes, and found before they were finished that they were helping me. I continued the pills until I had taken a half dozen boxes, with the result that I am now enjoying the best of health, all symptoms having disappeared. I feel confident that what Dr. Williams' Pink Pills did for me they will do for others, if given a fair trial."

You can get these pills from any medicine dealer or by mail at 50 cents a box from The Dr. Williams' Medicine Co., Brockville, Ont.