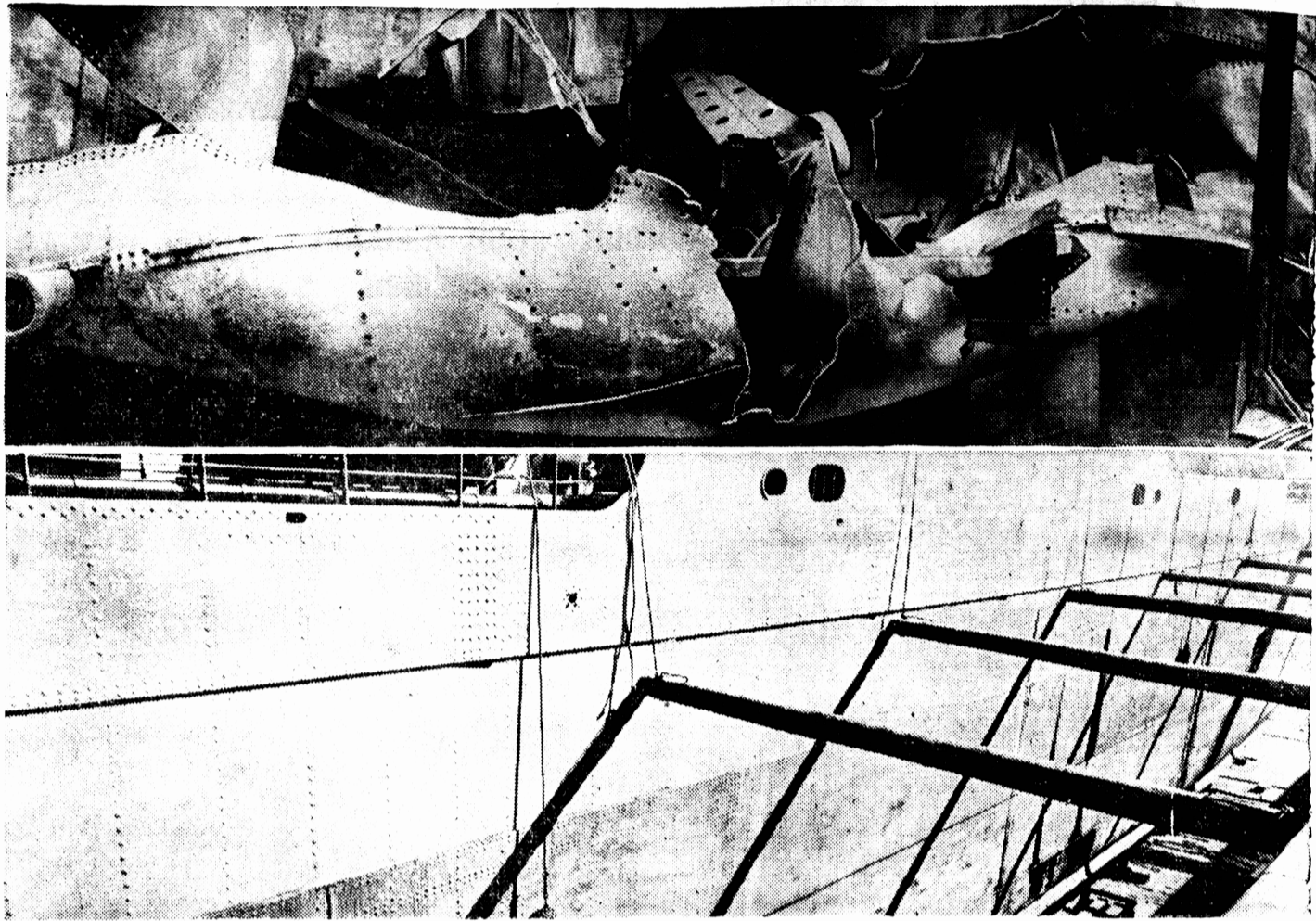


Canadian Yards Salvage Valuable War Cargoes, Repair Freighters of all Types



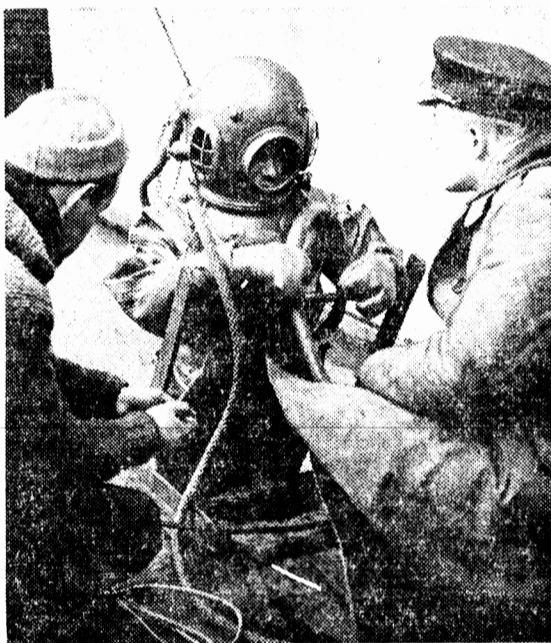
Diver's helmet is adjusted before salvage begins on cargo of wreck in Eastern port. By repairing damaged ships and salvaging sunken cargo Dept. of Munitions and Supply saves important tonnage, thousands of dollars worth of war goods.



In the top picture is seen damage done to side of freighter by two torpedoes from a sub. A third torpedo crashed into opposite side of ship. Despite her wounds, gallant crew brought her into port. In dry dock with her cargo removed repair work began, and in the lower picture she is shown with a completely new side, signs of torpedo damage are gone, she is ready for sea again.



Over small microphone Navy salvage man talks to diver working below water on sunken ship. Valuable cargoes are brought up from the sea by these salvage workers.



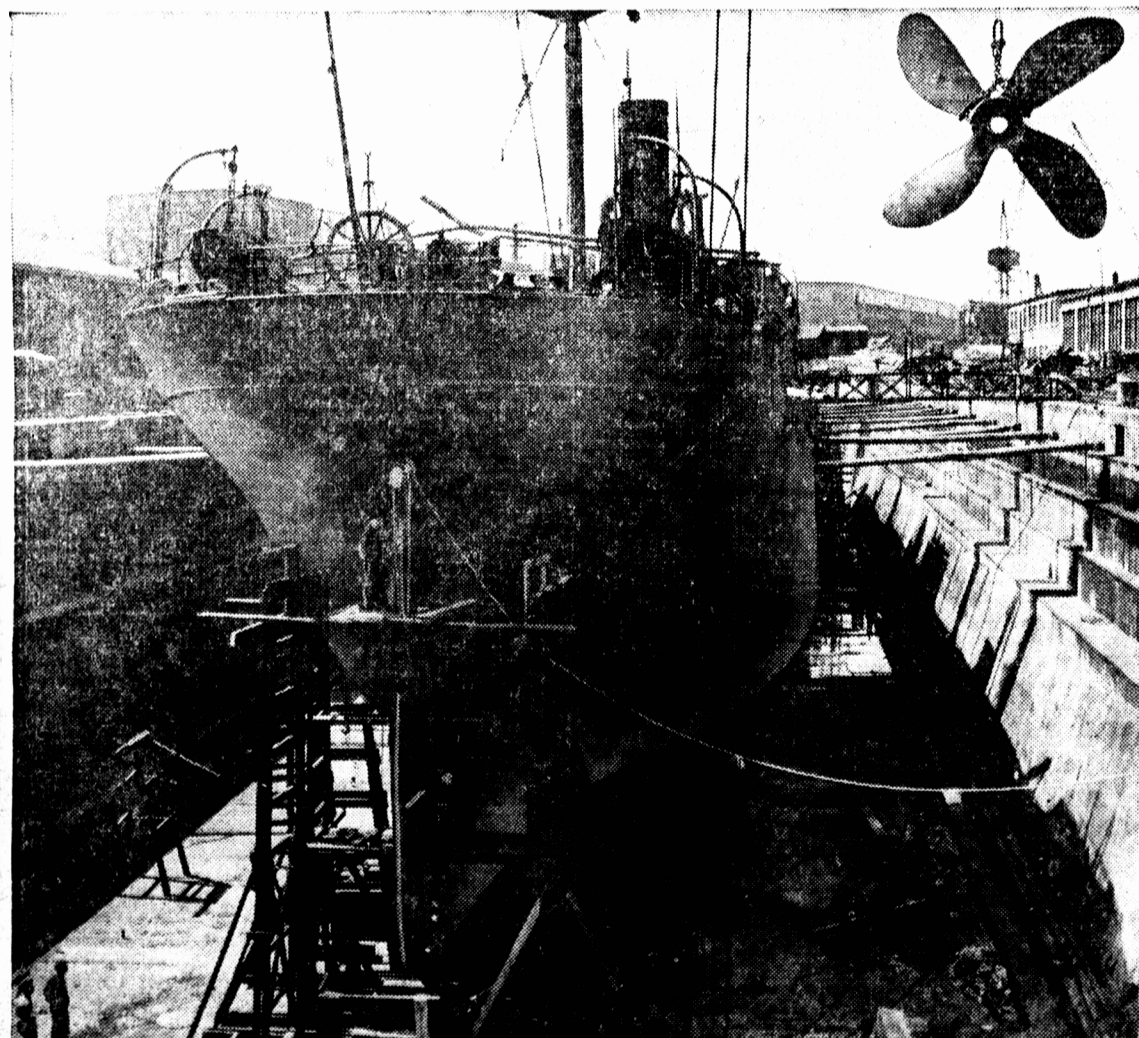
On stern of diving boat diver gets his final orders before face plate is screwed into place and air is pumped into his suit. Divers work winter and summer.



Diver Petty Officer John Brown enjoys a welcome cup of tea with couple of mates after working shift under water. Knife seems to be the center of Brown's story.

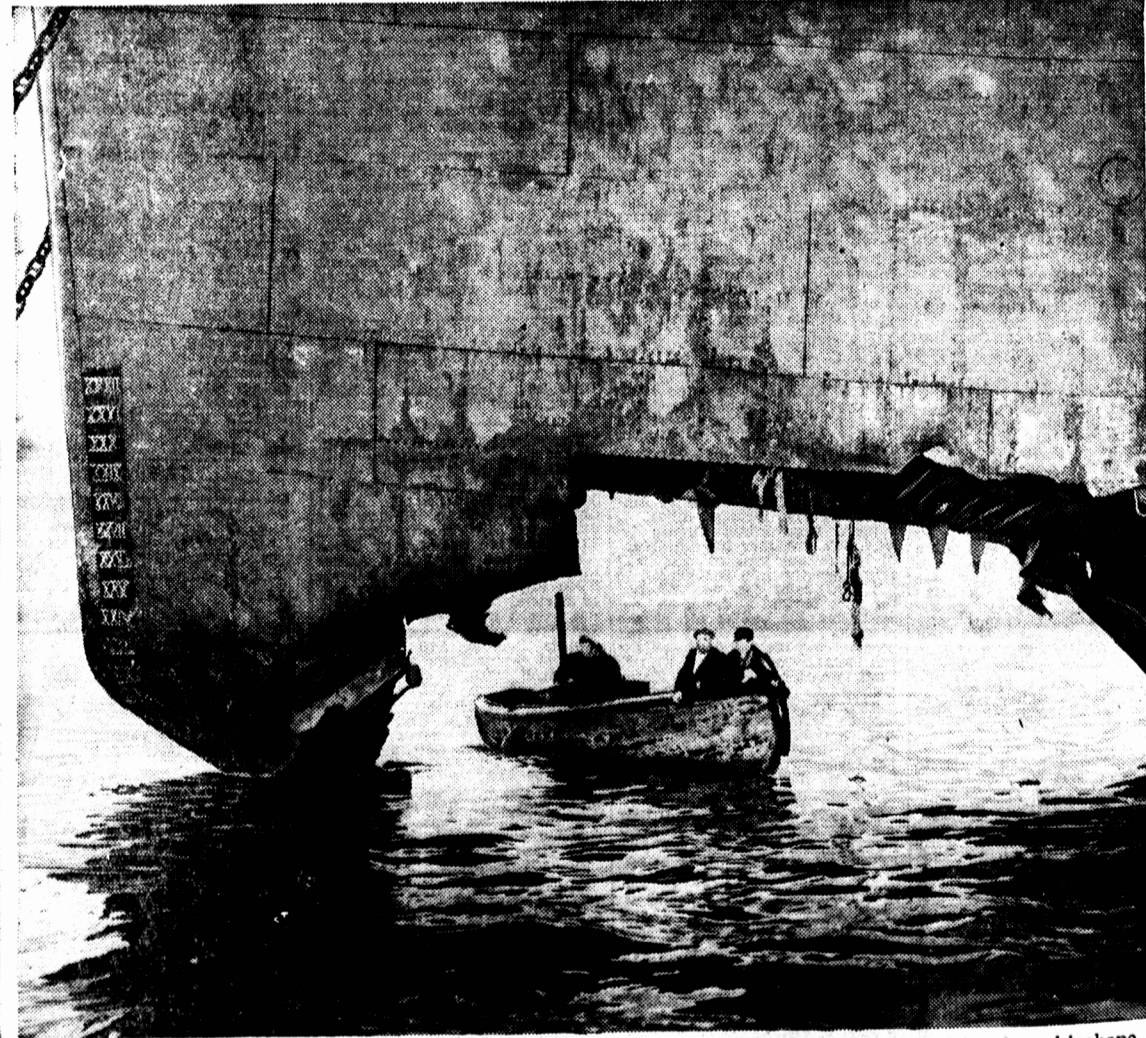


P.O. John Brown, St. John's, Newfoundland, and wife and baby, after receiving British Empire Medal for salvaging depth charge in an Eastern Canadian Port.



In the floating dry dock of an Eastern Canadian Port a Yugo-Slav freighter receives general repairs and a new propeller and rudder. Propeller, being swung into

position, weighs eight tons and was made in Canadian plant. Freighters of all nationalities are repaired in Canadian yards when damaged by sea or submarines.



This freighter was the target of an enemy sub in the Atlantic. Torpedo blew the bottom of her bow out, but she made port for repairs. Soon she will be in a dry

dock with crews busy at work putting her shipshape again. On eastern coast, in Newfoundland salvage and repairs put damaged cargoes, ships in fighting trim.