

IT WILL Cost Less TO Build OR Remodel NOW

FOR PARTICULARS CONSULT THESE ADVERTISERS

DESIRE FOR UTILITY SEEN IN PLUMBING

Modern Kitchen & Bathroom Necessities For Housewife

Good plumbing for convenience and utility was almost ignored yesterday, but it is a necessity today.

Under the Home Improvement Plan, the housewife now is able to obtain funds to go ahead with that long-postponed renovation of her kitchen and bathroom.

It is now, however, necessary nowadays to have a large kitchen to have a good kitchen, and the same goes for the bathroom. People used to think that plenty of space was essential for these two most important rooms, and their appointments rarely were arranged efficiently.

Saving of Labor
In building an addition or renovating the present home, the modern woman plans for utility and the saving of labor for she has come to realize that with the right equipment within a smaller area, work becomes much easier. Quite often the space saved can be used for a breakfast nook or an addition to a bedroom.

Home economists, architects and kitchen and plumbing specialists



have combined their talents and researches with those of the housewife to make the kitchen sanitary, pleasant, efficient. Their study and tests have proven that, regardless of size, the kitchen arrangement must be practical; that unnecessary walking must be eliminated to help preserve women's energy for the more strenuous living of today.

They learned to utilize space that has been wasted before and to make the room more compact.

INSULATION POPULAR

The vast majority of the homes that will be renovated this winter

certainly will be properly insulated, a construction expert believes.

MODERN CABINETS

Manufacturers developed cabinets made of furniture steel with baked-on enamel finishes. Some of these have table tops or are made to fit under sinks; others are wall types. Then, because most of women's work in the kitchen is near the sink



this important fixture was made with a low back to fit beneath a window. Its height was considered, so that stooping and consequent backaches could be avoided.

New, hard-surfaced, easy-cleaning treatments for floors and walls were found that would make them more colorful and at the same time more serviceable. Lighting was studied and the convenience of a light over the window above the sink, and a bracket fixture over the stove, have proven helpful to many.

Handy outlet receptacles for toasters and other appliances, properly placed for ready service, have become indispensable.

Invigorating Shower Available for Family

When the children return from having been away at school usually the first thing they miss is the invigorating shower to which school-life has accustomed them. "A tub may be fine for you, Dad," they say, "but give me a shower every time!" Your plumbing contractor or dealer will tell you how one can be installed cheaply and easily in a space only 6 feet 3 inches by 5 feet 3 inches.

Hints For Housebuilders

WIRING NEW HOME
When a new home is being fired provisions should be made for the expansion of the system. If additions to the home are planned for later years. Short circuits are a common cause of fire, and particular care should be given to the wire used for branch circuits serving kitchen, basements, or utility room.

SHELF FOR GALOSHES

A shelf across the back of the coat closet just above the baseboard is a convenient place for the rubbers and galoshes that usually clutter up the floor. The shelf should slope to the wall and be set about an inch or an inch and a half from the wall so that dirt and mud can drop through to the floor where it can be cleaned up more easily.

COLORFUL CHIMNEYS

White chimneys on gray houses, buff ones on green or other similar combinations are more distinctive than the usual deep-red variety. If you would like your chimney a different shade, have the painter give it three coats of exterior house paint.

SHALLOW SHELVES BEST

Shallow shelves are most convenient in the bathroom medicine chest. When bottles or jars are placed one in front of the other they are difficult to get at and are very apt to get broken in the shuffle. The shelves should be of graduated sizes to take care of assorted bottles.

APPLIED FLOORING

A house that does not have the type of flooring the owner desires may have an applied floor covering laid over the old floor, if it is not possible to replace the worn one.

CASEMENTS OVER SINK

Architects have found it practical to specify casement windows when a window is located over a sink. This type is much easier to operate from such a distance.

WALL BRACKET

Many times when a convenience outlet is inserted in a room a wall bracket can be put above it at slight extra cost while the opening is made.

USE CORRECT PAINT FOR BETTER LIGHTING

Broad eaves and covered porches on a house often exclude the daylight required to light a room sufficiently. When additional daylight



is desired, painting the underside of the eaves and porch ceiling with a fresh coat of light-colored paint will help reflect light into the room.

Good light and good sight are influenced by color. Choosing the best color and shade for each room in the home is a most important problem which currently confronts every home owner. The importance of protecting eyesight is well illustrated in the "Better Light—Better Sight" idea.

There should be enough light in each room so that all articles and portions of the room are clearly discernible, but the light should not be so glaring or so bright as to be injurious to the eyes. The color of the room should not be chosen merely from an aesthetic standpoint.

Combined Blue Tones Aid Lighting Of Hall

An effective color combination for a well-lighted hall in a public building combines two tones of blue with sand color and silver and accents the scheme with deep orange and black. Walls are painted in two tones of blue—the deeper tone being used for the dado area. Black dado strip and baseboard, as well as black vertical columns with silver stripes, show up well in contrast to the sand-colored floor which has been deep orange in its design.

Storm Window Panels Hinged For Ventilation

If you had storm windows at your home for the first time last winter you may have found them just a bit too air-tight and result in the rooms being a bit stuffy. If this is the case now is the time to figure out a way of building a panel on them that may be opened for ventilation purposes. A good carpenter can suggest several ways to renovate them so as to get rid of that "sealed up for the winter feeling."

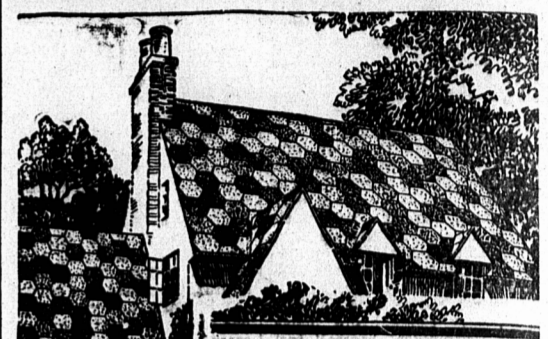
Now Is Time To Guard Against Frozen Pipes

This is the time of year to prepare against frozen pipes. If you have exposed pipes in the house that have the habit of freezing, you had better have them covered with some sort of insulating material. If there are pipes enclosed in an exposed outside wall, it would pay either to open the wall and insulate them or at the sacrifice of appearance, to bring them inside and run them exposed. Frozen pipes can cause a great deal of damage.

Attractive Bathroom Scheme Described

An exceptionally attractive bathroom color scheme is composed of tones of cream, terra cotta, green and black. With the exception of

the wall against which the dressing table is placed, the walls are painted a warm cream tint. The dressing table wall, however, is coated terra cotta. The shower curtain and baseboard are green while the cream colored floor is accented with a border of black.



RU-BER-OID ROOFS

COLORFUL HEXAGON SHINGLES

Here is a roof that is durable, economical and extremely attractive. These shingles are made in a variety of color combinations to beautify the appearance of any home.

Year after year they stand up under the rigors of winter or the burning heat of summer. And through it all the natural color slates retain their beauty.

For new work or sight over the old wooden shingles.

Ask us to give you an estimate on a new roof for your house. It does not obligate you in the least.

RUBEROID ROOFINGS

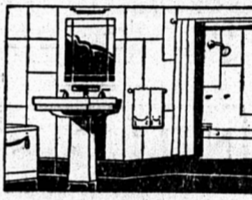
The Rogers Hardware CO. LIMITED

Phone 105.

Charlottetown

FOR Modern PLUMBING

TELEPHONE 393-J



WE LEAD—OTHERS FOLLOW

Our staff is composed of thoroughly experienced workmen. Personal attention given to all jobs, large and small, anywhere in Prince Edward Island.

We install HOTWATER, WARMAIR, and STEAM HEATING SYSTEMS, AUTOMATIC FURNACE STOKERS, OIL BURNERS FOR RANGES AND HEATERS, ELECTRIC, OIL, COAL, AND WOOD RANGES, SHEET METAL WORK.

FRED H. TRAINOR

Reasonable Charges — Satisfaction Guaranteed
80 Grafton Street—Opposite Prince Edward Theatre

"A HOME IS ONLY AS MODERN AS ITS PLUMBING"

In basements, bathrooms, kitchens, laundries and lavatories attractive fixtures and dependable "hidden" materials pay dividends in extra satisfaction and convenience.

We invite you to call and see the new 1938 Fixtures and fittings.



6 MONTHS TO 5 YEARS to pay for those long wanted HOME IMPROVEMENTS

There is no longer any need to put up with a shabby or out-of-date home. A Home Improvement Loan lets you offer the example of thousands of other home owners who have made their homes more livable with needed repairs and additions — without financial strain.

Just think of the difference insulation and a modern heating system will make to your comfort this winter. Think of the fuel savings. Or take a paint job — inside or out — or re-roofing or any one of a dozen other improvements. Fall is the time to get the work started — for winter comfort and for the added satisfaction of putting men to work at a time when they need it most.

LOANS EASILY ARRANGED

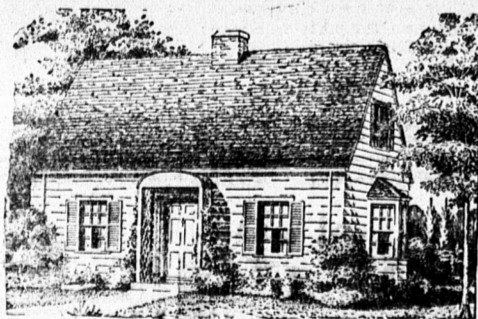
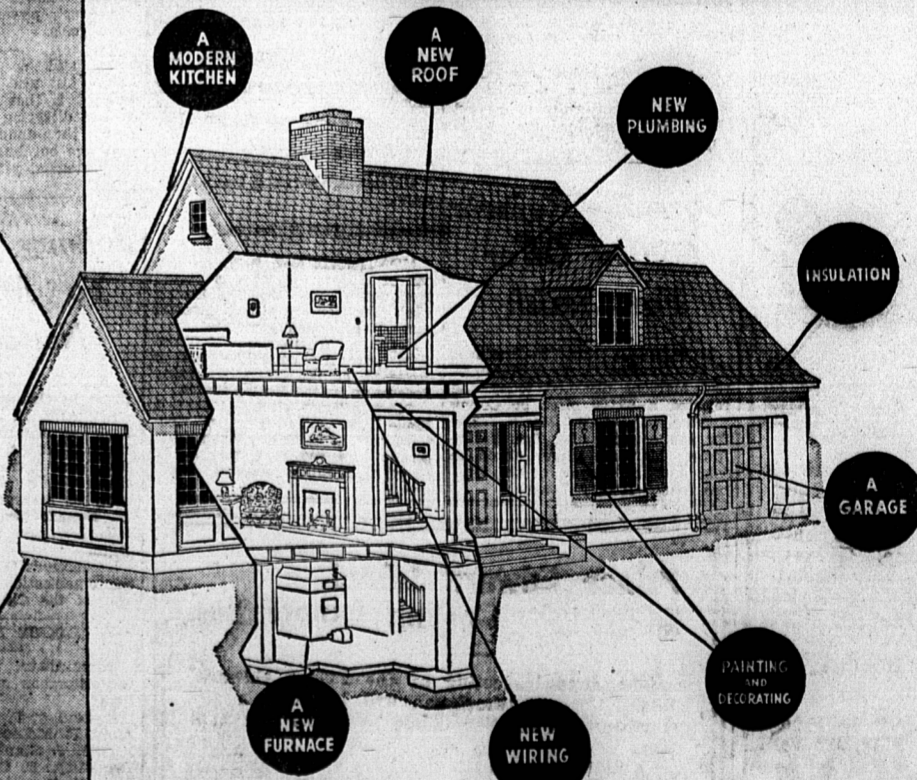
Any contractor, supply firm or architect can help you arrange a Home Improvement Plan loan if you need it to finance the work for you, or you can apply direct to your banker. No security or endorsement needed: you simply show that you can repay in monthly instalments and the loan is made, the work proceeds, your home is made brighter and more livable and men get needed jobs. Full information on the Home Improvement Plan and what it covers may be obtained from your local committee, your Provincial Chairman, your bank or the National Employment Commission, Ottawa.

NATIONAL EMPLOYMENT COMMISSION UNDER THE AUTHORITY OF THE DOMINION GOVERNMENT

E. T. HIGGS, Provincial Chairman,
Charlottetown, P. E. I.



(The cost of this series of advertisements sponsored by the National Employment Commission, has been defrayed entirely by public-spirited citizens and individuals, as a contribution towards that "Nation-wide co-operative effort" envisaged by the Parliament of Canada in the National Employment Commission Act.)



Protection Begins with the Surface!

Wintry storms with their attendant deteriorating elements are coming closer every day... protect your home and improve its appearance and comfort by re-painting at once! Afterward, you can enjoy the comfort that fine work affords... lower heating bills... vastly improved appearance... all-weather protection.

PAINTS
VARNISHES
&
ENAMELS



FOR PERFECT PROPERTY PROTECTION USE

"CROWN DIAMOND"

Prowse Bros. Ltd.