

R.C.A.F. Forges Mighty Link in Labrador on War-Built Bomber Route to England



Typical of men who garrison Canadian-built air base, one of world's largest, are airmen, soldiers shown above. (l. to r.) S/L Powell, hails

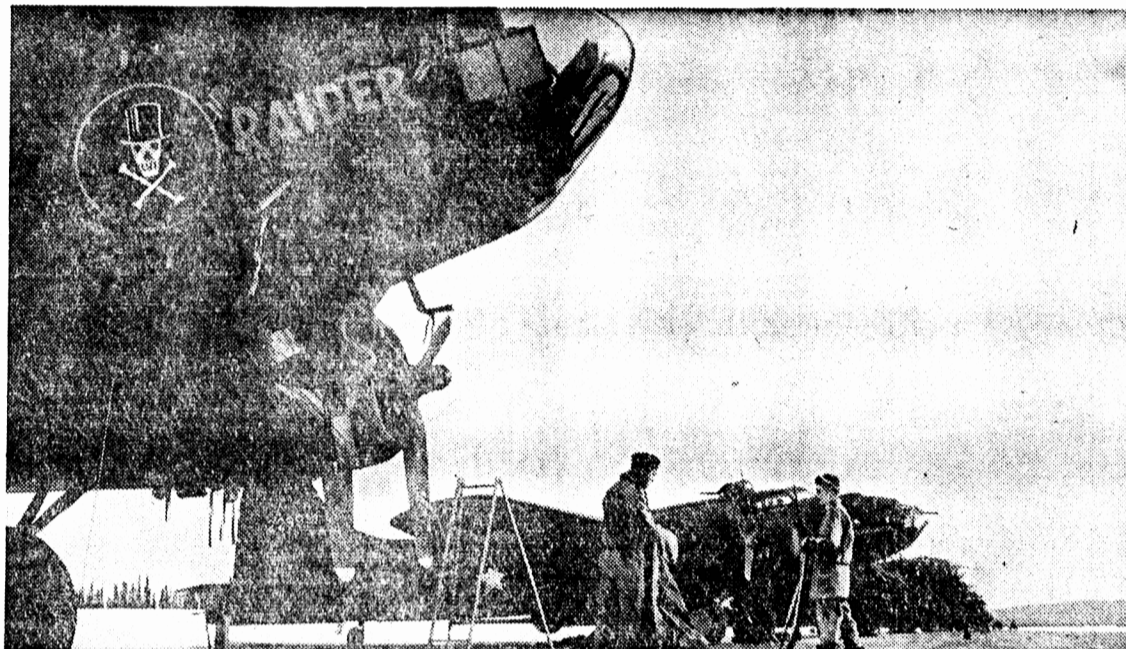
from London, England, is blitz veteran and former fighter pilot; Capt. N. R. Shultz, Sackville, N.B., is former engineer; Pte. M. R. Whitehawk, bronzed

Cree Indian, is former Saskatchewan farmer; F/O Ken Matheson, Petrolia, Ont.; Gunner E. Theriault is weight-lifting champ, brought weights to keep

in shape; S/L W. F. Napier, R.C.A.F. squadron, is from Campbellton, N.B. Through long winters these men help maintain constant flow of bombers to England



Good neighbors in far northern outpost are Group Capt. E. H. Evans, R.C.A.F., of Minnedosa, Man. and Col. A. D. Smith, U.S.A., of Albuquerque, New Mexico.

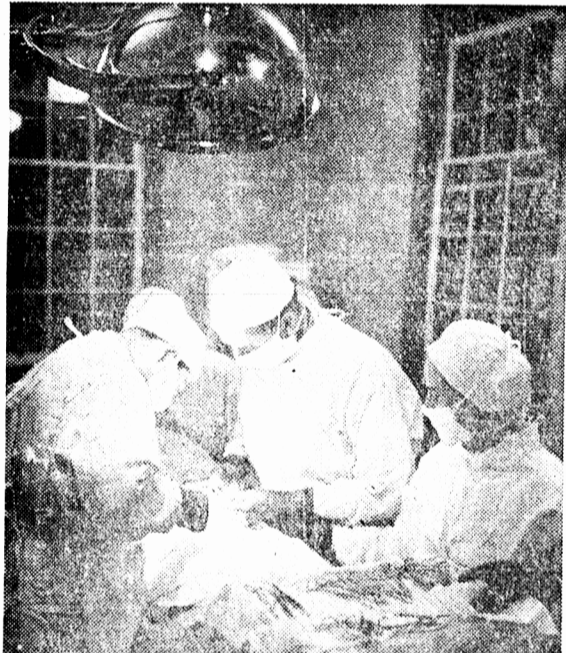


In a constant stream, the huge American Fortresses come from the west, gas up again, and continue the journey to England. On runways that are among the

largest in the world, bombers are roaring in and taking off again. The base is a tribute to Canadian enterprise, technical skill and engineering genius.



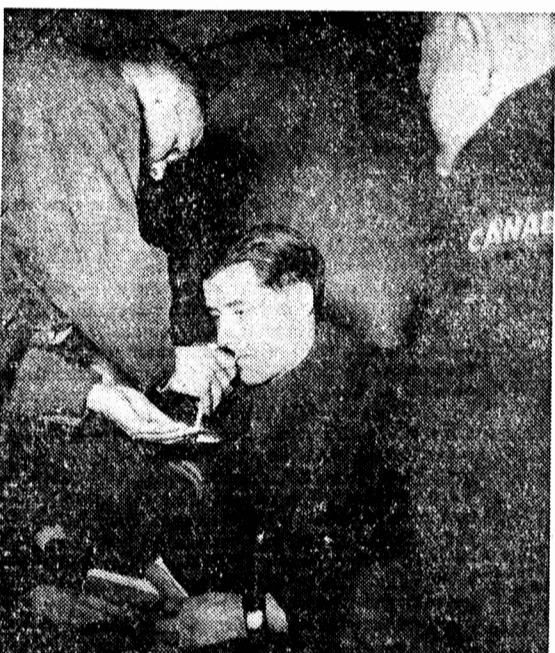
Food and supplies are flown in from Moncton, N.B. an essential job being done by R.C.A.F. squadron. Winter and summer an enormous volume is freighted



A modern surgery handles all emergencies. This is the 106th major operation, an appendectomy on one of the camp workers. Local folk are also treated.



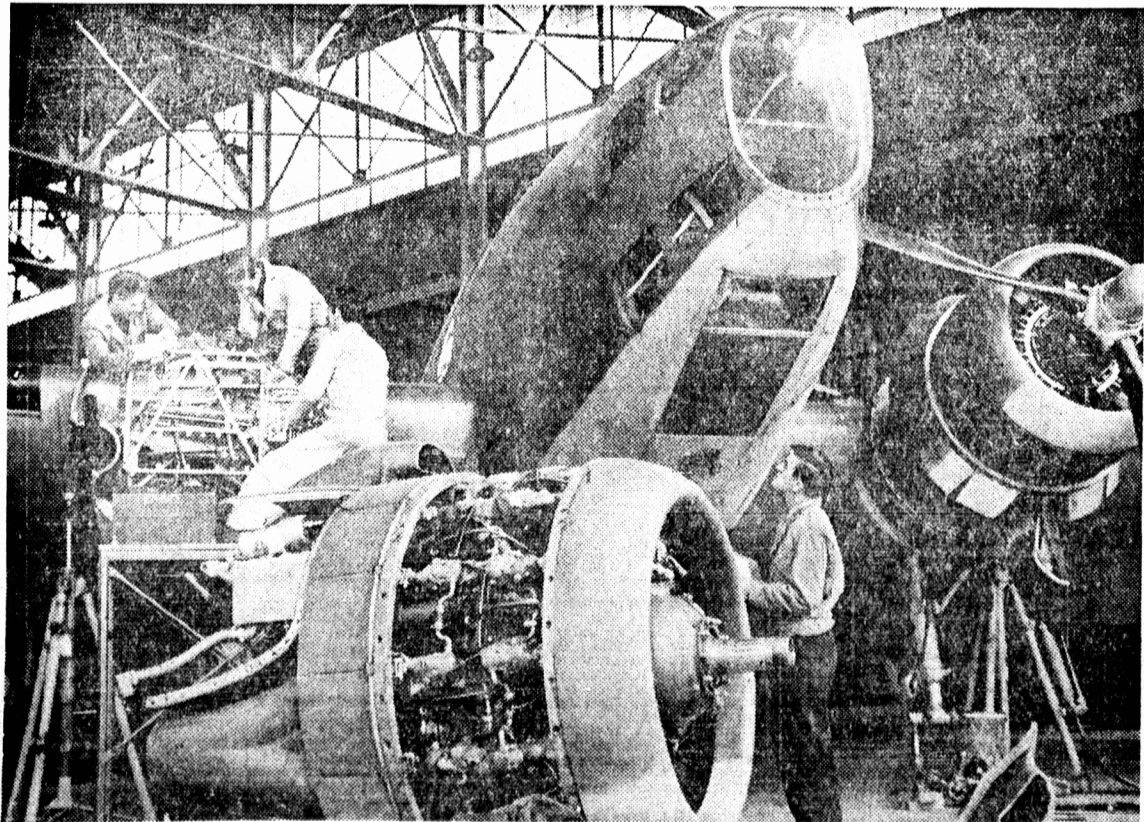
A popular Sunday pastime at the base is fishing for smelts, a sport at which Sgt. J. E. Munde of Sussex, N.B., is an expert. This is early May in Labrador.



Church services are always well-attended at lonely outpost. Here Communion is given by Rev. Capt. Gordon on Easter Sunday in Canadian Army hut.

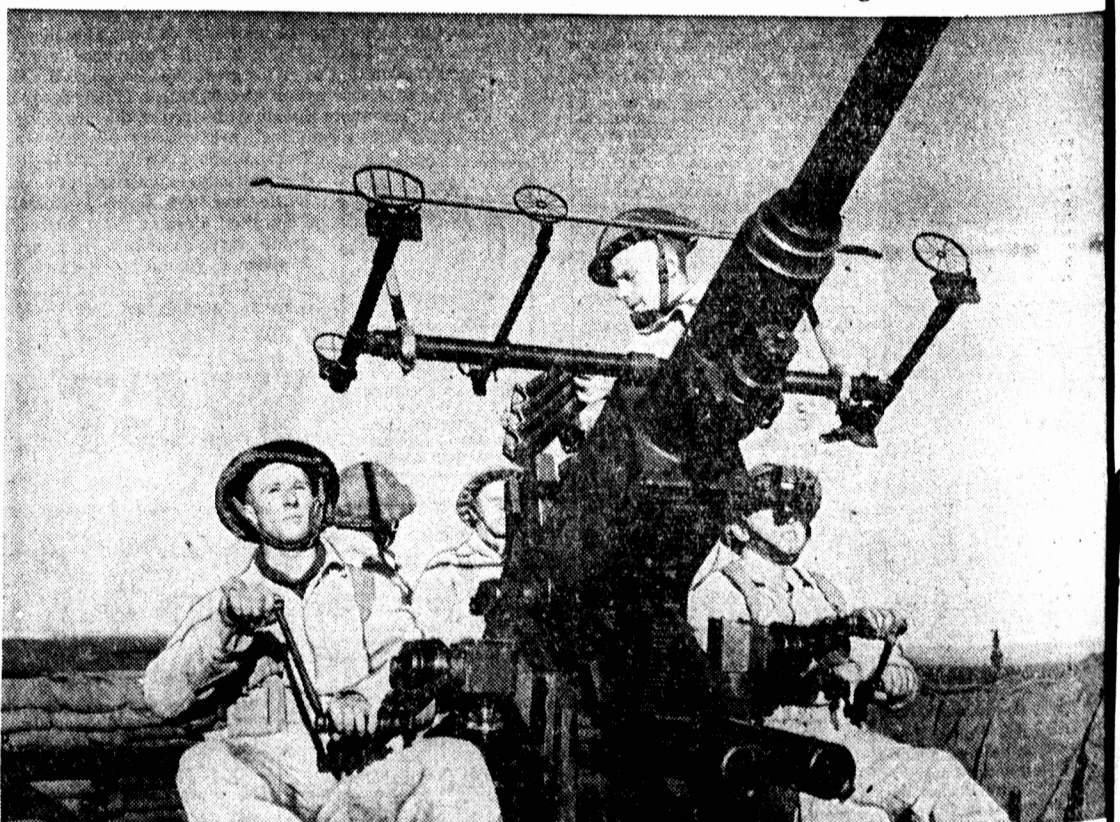


Typical construction men are Victor Meloche (l) of Hull and Jim Wallace of Montreal. High victory load quota was exceeded during the first week of drive



Base is equipped to take care of necessary repairs. Here R.C.A.F. mechanics are overhauling motors of Ferry Command bomber. Base contains separate commands of

R.C.A.F., R.A.F., and U.S. Army Air Force. All work in close co-operation. But the construction of the huge base itself, a difficult feat, was Canadian.



Constant vigil is maintained at the base to guard against possible attacks. Mighty defences, such as the Bofors anti-aircraft battery shown here being

manned by Canadian soldiers, promise hot reception for any marauding foe. Canadian Army and R.C.A.F. are ready at this distant North American outpost.

NATIONAL FILM BOARD PHOTOS by Ronny Jaquet.