

INSULATE for YEAR-ROUND COMFORT

Keep Heat out in Summer

Keep Cold out in Winter

THOUSANDS of home-owners have proved that insulation pays in reduced fuel bills, in increased comfort, in elimination of house repairs. Beaver Insulating Board under roof and in walls keeps heat in the house in winter and out of the house in summer. It prevents damp air from seeping through roof and walls to buckle floors, corrode plumbing, rot joists.

Whether you build, or remodel, ask your builder to quote on the weather-proof and money-saving protection of Beaver Insulating Board. Write for free booklets which give valuable information.

MADE IN CANADA

BEAVER BOARD **BEAVER INSULATING BOARD**

BEAVER BESTWALL - The Superior Plaster Wall Board

Certain-Teed Products Corp. of Canada, Ltd.
Thorold, Ont.

Please send free illustrated booklets on Beaver Products.

Name.....
Street or R.F.D.....
City.....

BEAVER, INSULATING AND BEST WALL PLASTER BOARDS
We Sell all of above Material
MacDONALD - ROWE
WOODWORKING CO., LTD
Charlottetown

You Can Paint a Floor with **LACQ** HOUSEHOLD PAINT

—and walk on it in less than one-half hour. Use "Lacq" where the household traffic is heaviest. It will withstand wear, does not show scratches, and will not be affected by repeated washings and scrubbing.

Finish your furniture and woodwork with "Lacq." It produces a surface both beautiful and durable. And there never has been a paint so easy to apply.

Price: PER PINT—\$1.40
PER QUART—\$2.50



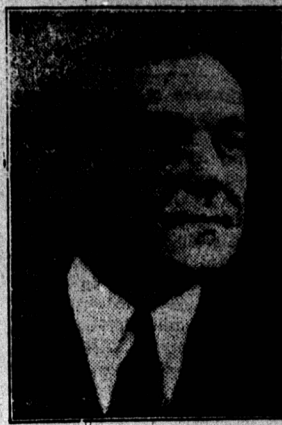
For polishing use "OLD ENGLISH" WAX on your floors, linoleum, etc. It gives a wonderful gloss and at the same time preserves the surface.

Per pound 75c

The Rogers Hardware Company Limited

E. R. BROW

146 Richmond St., Charlottetown
Fire, Life, Accident, Sickness and Plate Glass Insurance at Lowest Rate.
Good Strong Stock Companies
Agent at Summerside, Lloyd Lewis



(Left) Eric V. Chown, Toronto, Field Supervisor of the Life Underwriters Association of Canada and (Right) Roger B. Hull, New York, Managing Director and General Counsel of the National Association of Life Underwriters, appointed Joint Managers of the Fourth International Convention of Life Underwriters, to be held at the Royal York Hotel, Toronto, September 24, 25 and 26, 1930.

REMINISCENCES OF CHARLOTTETOWN

Continued from Page 4

cess in histrionic art presented here up to that time.

After penning the foregoing on "Dramatics," etc., there came under my observation the following from the editorial page of the "Montreal Star." As it looks to me to be apropos to the present subject I am giving it in full.

"Uncle Tom's Cabin"

"After a phenomenally long life. Simon Legree, Uncle Tom, Little Eva and the rest of the family have finally passed on. Uncle Tom's Cabin no longer stands, and as for the bloodhounds, not even the memory of their baying is left. There are very few people alive today who can recall the first performance of the famous old melodrama based upon Harriet Beecher Stowe's historical novel. But there are also very few people living today who have not seen at some time or another a performance of this play. It has probably brought more tears to the human eye than any other public performance known to humanity. Indeed, it is on record that the first time Little Eva died and was taken up by attendant angels, seventy-eight years ago, many people in the audience fell off their seats into the aisles weeping bitterly, and that they were still mopping their eyes when the same Little Eva tripped gaily down the aisles selling pictures of herself, as mementoes of the occasion.

"From the time when John L. Sullivan, retired pugilist, made it too hot for no fewer than eight Uncle Toms by the vigour of his lashing in the villainous role of Legree, down to the past year, this play has literally drawn millions of people to the theatres. It is the only play in the history of the drama that has been presented by companies varying in number from seven to seventy. But its appeal has at last failed, and now there is no company presenting it in public anywhere. Doubtless the explanation given that a new generation has arisen that cares not for sentimental melodrama is the correct one. Yet one is tempted to

wonder whether that sentimental melodrama is not to be preferred to the unwholesome, disturbing stuff that is ladled out as drama today.

"With our film theatre screens crowded by racketeers, mobsters, hijackers, rum-runners, and their lurid following; with the few legitimate theatres remaining on the Continent fed in the main with such wretched pabulum as "Diamond Lil" and similar degrading material; with the appeal of screen and stage almost wholly directed towards the luridly sensational and the morbid and the degenerate, the obvious artificialities of "Uncle Tom's Cabin" may well seem fine by comparison. Doubtless there will finally emerge from the present turgid conditions a glaze of the theatre that will be inspiring and uplifting; but one has to be somewhat of a heroic optimist to believe it today."

also:

Censorship and the Films
Truth (London): "The American" says a character in one of John Galsworthy's plays "are a great nation with a strong sense of moral turpitude in others." In the debate on the censorship in the American Senate, some of the Senators in their desire to keep untouched the purity of Chicago, Seattle, and New York itself, demanded that the most stringent measure should be introduced to exclude from the American home "the flagrant poison of European literature." We are certain of the Senatorial sincerity that we take it for granted that Americans will not protest if we take steps to exclude from our homes the poisonous stench that floats across to Europe from Hollywood. It is high time that we did so, for films get more and more emphatic as the years go on."

FREDERICTON AND VICINITY

SPRING
Song birds are sweetly singing
And all the world is gay
For sunshine ushers in the spring
And chases cold away.

To most of us at this time of the year comes an uplift of spirit, a new, unexplained happiness, an urge to accomplish great things and the assurance that our every effort will more or less meet with success. Nature, too, seems to rejoice as she casts off the fetters of winter, and blooms forth in all the gay newness of bud and grass and flower. She also supplies sunshine for the growth of her most beautiful possessions, and by so doing, sets us an example whereby we may inspire and direct our future citizens by the sunshine of our love and understanding.

The sympathy of this community goes out to Mr. and Mrs. Garfield Stevenson, Hazel Grove, in their irreparable loss by fire, of their commodious dwelling house with nearly all its contents. It is understood that Mr. Stevenson contemplates rebuilding again in the early summer.

It is extremely regrettable that Mrs. Howard Rackham did not continue to improve, as it was expected and that she has been obliged to return again to the P. E. I. Hospital, where it is hoped that convalescence will be more rapid.

The Young People's Society met Tuesday evening at the home of Miss Iola Weeks, Pleasant Valley. There was a large attendance, and a very pleasant and profitable hour spent. The discursive period was extremely interesting, and many complicated questions were thoroughly

Prof. Oscar M. Emanuel
Violinist and Teacher
Elementary and Advanced Pupils.
Phone 1054-L. 107 Queen Street.
Across from French Bros.
Hours 1 to 6 P. M. 7 to 9 P. M.

USE RAMSAY'S PAINT

A little "good" paint works wonders—it transforms ugliness into beauty and provides the finest and cheapest insurance to the surface against decay.

Ramsay's Paint has been used for preserving and beautifying Canadian property for nearly one hundred years and during this time has won an enviable reputation for itself.

For Sale by Stanley, Shaw & Peardon

USED CAR MARKET REPORT
These are approximate prices for cars with mechanism, tires, finish and upholstery in good condition
April 1st, 1930

NASH

| | | | |
|---------------------------|---------|---------|--------|
| ADVANCED SIX | 1929 | 1928 | 1927 |
| 4-4-Pass. Coupe | \$1200. | \$1050. | \$750. |
| 4-4-Pass. Cabriolet | 1500. | 1000. | 800. |
| 4-4-Pass. Four-Door Sedan | 1350. | 950. | 675. |
| 4-4-Pass. Sedan | 1600. | 1200. | 800. |
| 4-4-Pass. Limousine | 1700. | 1300. | 900. |
| 4-4-Pass. Ambassador | 1450. | 1150. | 750. |
| 4-4-Pass. Sedan | 1350. | 1000. | 750. |
| SPECIAL SIX | | | |
| 4-4-Pass. Two-Door Sedan | 1200. | 900. | 600. |
| 4-4-Pass. Coupe | 1200. | 850. | 700. |
| 4-4-Pass. Cabriolet | 1200. | 900. | 600. |
| 4-4-Pass. Four-Door Sedan | 1250. | 850. | 700. |
| 4-4-Pass. Sedan | 1350. | 950. | 700. |
| 4-4-Pass. Cabriolet | 1250. | 850. | 600. |
| 4-4-Pass. Victoria | 1250. | | |
| STANDARD SIX | | | |
| 4-4-Pass. Four-Door Sedan | 1000. | 750. | 550. |
| 4-4-Pass. Cabriolet | 900. | 700. | 500. |
| 4-4-Pass. Two-Door Sedan | 900. | 700. | 500. |
| 4-4-Pass. Coupe | 900. | 700. | 500. |
| 4-4-Pass. DeLuxe Sedan | 950. | 750. | 550. |

GRAHAM PAIGE

| | | |
|-----------|---------|-------|
| 610 Sedan | 1928 | 1929 |
| 610 Coupe | \$ 700. | 800. |
| 610 Sedan | 1100. | 1000. |
| 612 Sedan | 1000. | 900. |
| 612 Coupe | 850. | 800. |
| 612 Coupe | 850. | 800. |

WHIPPET

| | | | | |
|-----------------------|--------|--------|--------|--------|
| 4 Cyl. Model 96 & 96A | 1929 | 1928 | 1927 | 1926 |
| Touring | \$485. | \$410. | \$335. | \$280. |
| Roadster | 485. | 410. | 335. | 280. |
| Coupe, 4-Pass. | 510. | 435. | 360. | 305. |
| Coupe, 2-Pass. | 575. | 490. | 415. | 360. |
| Coupe, 4-Pass. | 575. | 490. | 415. | 360. |
| Coupe, 4-Pass. | 600. | 470. | 375. | 325. |
| Sedan | 650. | 500. | 375. | 300. |
| 4 Cyl. Model 98A & 98 | | | | |
| Coupe, 2-Pass. | 700. | 375. | 450. | |
| Coupe, 4-Pass. | 720. | 610. | | |
| Coupe | 710. | 600. | | |
| Sedan | 750. | 625. | 500. | |

WILLYS-KNIGHT

| | | | | |
|-----------|--------|--------|------|------|
| Model 96 | 1929 | 1928 | 1927 | 1926 |
| Coupe | \$500. | \$600. | | |
| Coupe | 550. | 750. | | |
| Model 70B | | | | |
| Sedan | 1150. | 900. | 700. | |

DESOTO

| | | | | |
|----------------------------|--------|------|------|------|
| Special Roadster | 1929 | 1928 | 1927 | 1926 |
| Business Coupe | \$750. | 800. | 850. | 900. |
| Coupe | 725. | 775. | 825. | 875. |
| DeLuxe Coupe (Rumble Seat) | 765. | 815. | 865. | 915. |
| Standard Sedan | 765. | 815. | 865. | 915. |
| DeLuxe Sedan | 800. | 850. | 900. | 950. |

PLYMOUTH

| | | | | |
|-----------------------|---------|------|------|------|
| Coupe | 1929 | 1928 | 1927 | 1926 |
| Coupe | \$ 875. | 800. | 725. | 650. |
| DeLuxe Coupe | 875. | 800. | 725. | 650. |
| Touring or Town Sedan | 875. | 800. | 725. | 650. |
| Sedan | 900. | 825. | 750. | 675. |

STUDEBAKER

| | | | | |
|-----------------|--------|--------|--------|------|
| ERKINE SIX | 1929 | 1928 | 1927 | 1926 |
| Club Sedan | \$800. | \$650. | \$450. | |
| Regular Sedan | 850. | 800. | 850. | |
| Royal Sedan | 1050. | 900. | 750. | |
| Coupe (4-Pass.) | 1000. | 850. | 625. | |
| DICTATOR SIX | | | | |
| Club Sedan | 900. | 750. | 550. | 400. |
| Regular Sedan | 1100. | 900. | 650. | 450. |
| Duplex | | 500. | 300. | |
| COMMANDER SIX | | | | |
| Regular Sedan | 1500. | 1150. | 850. | 600. |
| Regar Sedan | 1600. | 1250. | 950. | 600. |

DODGE BROTHERS

| | | | | |
|-----------|--------|------|------|------|
| 6 Sedan | 1929 | 1928 | 1927 | 1926 |
| 6 Coupe | \$900. | 750. | | |
| 4 Sedan | | 850. | 600. | |
| 4 Coupe | | 800. | 550. | |
| 4 Touring | | 400. | 250. | |

Owners may estimate the market value of their own used cars by deducting from the above prices the necessary expenses for reconditioning and handling.

This list is compiled for use of the Automobile Dealers of Charlottetown and used car buyers guide.

DURANT

| | | | | |
|---------------|-------------|-------------|------------|-------------|
| 1929 | 1928 | 1927 | 1926 | 1925 |
| 4-Cyl. D-40 | 4-Cyl. D-60 | 6-Cyl. D-70 | 4-Cyl. M-2 | 6-Cyl. D-46 |
| \$700. | \$825. | \$1350. | \$350. | \$750. |
| DeLuxe Sedan | 800. | 925. | 1450. | |
| Coupe | 850. | 775. | | 500. |
| Coupe | 850. | 725. | 1200. | 475. |
| Con. Roadster | 850. | | | 400. |
| Touring | 800. | | | 300. |

STAR

| | | | |
|----------------|---------------|---------------|---------------|
| 1927 | 1927 | 1926 | 1926 |
| 4-Cyl. Mdl. A1 | 6-Cyl. Mdl. F | 4-Cyl. Mdl. F | 6-Cyl. Mdl. F |
| \$425. | \$500. | \$325. | \$400. |
| Coupe | 375. | 450. | 275. |
| Coupe | 325. | 400. | 225. |
| Touring | 250. | | 300. |

CHRYSLER

| | | | |
|--------------|---------------|-----------|-----------|
| Model | Plymouth 1929 | "53" 1928 | "50" 1927 |
| Roadster | \$ 585. | \$ 450. | \$350. |
| Coupe | 570. | 450. | 350. |
| Coupe | 560. | 450. | 350. |
| DeLuxe Coupe | 575. | 450. | 350. |
| Sedan | 600. | 500. | 400. |
| Model | "68" 1929 | "62" 1928 | "60" 1927 |
| Roadster | 1000. | 750. | 550. |
| Coupe | 950. | 750. | 550. |
| Coupe | 900. | 700. | 500. |
| Sedan | 1000. | 775. | 600. |
| Model | "78" 1929 | "72" 1928 | "70" 1927 |
| Roadster | 1500. | 1100. | 700. |
| Coupe | 1400. | 1050. | 700. |
| Brougham | 1500. | 1150. | 775. |
| Crown Sedan | 1550. | 1200. | 800. |

BUICK

| | | | |
|----------|---------|--------|--------|
| 1929 | 1928 | 1927 | 1926 |
| 26 Coach | \$1075. | \$795. | \$600. |
| 26 Coupe | 1050. | 850. | 600. |
| 27 Sedan | 1150. | 900. | 700. |
| 47 Sedan | 1370. | 1025. | 750. |
| 48 Coupe | 1180. | 850. | 600. |

PONTIAC

| | | | |
|-------|--------|--------|--------|
| 1929 | 1928 | 1927 | 1926 |
| Coupe | \$740. | \$575. | \$400. |
| Coupe | 700. | 575. | 450. |
| Sedan | 850. | 625. | 500. |

CHEVROLET

| | | | |
|-------------------|--------|--------|--------|
| 1929 | 1928 | 1927 | 1926 |
| Roadster Delivery | \$450. | \$350. | \$250. |
| Roadster | 450. | 350. | 220. |
| Phaeton | 450. | 350. | 220. |
| Coupe | 550. | 440. | 300. |
| Sport Coupe | 640. | 495. | 350. |
| Coupe | 550. | 445. | 325. |
| Sedan | 650. | 525. | 400. |

ESSEX

| | | | |
|-----------------------|---------|---------|---------|
| 1929 | 1928 | 1927 | 1926 |
| Coupe | \$ 750. | \$ 550. | \$ 350. |
| Coupe, R. S. | 750. | 550. | 350. |
| Standard Sedan | 800. | 650. | 400. |
| Touring or Town Sedan | 875. | | |

HUDSON

| | | | |
|-------------|---------|---------|---------|
| 1929 | 1928 | 1927 | 1926 |
| Coupe | \$1000. | \$ 800. | \$ 550. |
| Sedan, Std. | 1150. | 850. | 600. |

OLDSMOBILE

| | | | |
|-------------|---------|---------|---------|
| 1929 | 1928 | 1927 | 1926 |
| Coupe | \$ 900. | \$ 700. | \$ 500. |
| Sedan, Std. | 950. | 750. | 550. |
| Landau | 975. | 750. | 600. |

FORD

| | | | |
|-----------------------|--------|--------|--------|
| 1929 | 1928 | 1927 | 1926 |
| Touring | \$450. | \$350. | \$250. |
| Roadster | 425. | 325. | 175. |
| Roadster, Rumble Seat | 475. | 375. | |
| Coupe | 520. | 425. | 250. |
| Sport Coupe | 525. | 425. | |
| Tourer | 530. | 425. | 250. |
| Fordor | 575. | 475. | 300. |
| Town Sedan | 650. | | |

ly examined and answered. Those discussions are of great practical utility in the direction of wide thought and good sentiment.

Mr. and Mrs. Lorne Seaman, Springfield, were guests of Miss Annie McLennan, Fredericton recently.

Quite a large number of the young people of Fredericton, Hazel Grove, New Glasgow and Wheatley River attended the dance at Hunter River, which was held on Easter Monday night.

The friends of Mr. John D. McKeown, Marville, sincerely regret his

serious illness which necessitated his removal to the P. E. I. Hospital. The latest reports are to the effect that there is some slight improvement which we trust will continue.

The ladies of this community are skilled in the art of decorating the interior of their homes and many new changes and ideas have already been created a pleasant environment in the matter of lessening household labor. It is expected that earlier decoration will follow suit shortly.

Mr. Horace Outlife, Fredericton, visited Hunter River recently.

Mr. William Weeks, Fredericton, was a welcome visitor at Ebenezer recently.

Mr. Walter Weeks, one of our general merchants was a recent visitor to the capital. He is contemplating on installing another telephone, which will no doubt assist business in general.

LETTER OF SYMPATHY

Dear Mrs. J. L. Matheson: We the members of the Oyster Bed Bridge Women's Institute wish to convey to you our kindest sympathy

in your very sudden bereavement which you have sustained in the death of your beloved father. While we sympathize with you we realize how empty words are in a time as this, but there is One we can recommend to you who has promised to wipe away all tears from our eyes.

We the undersigned extend to you and your family our tenderest loving sympathy and may God grant that some happy day you will all meet in an unbroken family circle at His right hand. Signed:

Mrs. R. L. MacPherson, Pres.
Miss Eva E. Matheson, Secy.