

STOCK QUOTATIONS

MINING

(Canadian Press) TORONTO, Dec. 22-

Table of stock quotations including Acme Oil, Anglo Can, Anson Gold, Baginac, Bankfield, Bear Expl, Bidgood, Brairno, Broulan, Buff Ank, Buff Cdn, Cas Treth, Cent Pat, Can Forc, Chester, Cochenour, Communwea, Daviss, Denison, Dams Oil, Duquesne, East Mal, Eldorado, Francoeur, Goldale, Gold Eagle, Gold Gate, Gunnar Gold, Hallow, Hard Rock, Hollinger, Home Oil, Howes, Int Bay Min, Int Nickel, Jack Wal, Kerr Add, Kirk Lake, Kirk Lake, Lake Shore, Lana Cad, Leitch, Little LL, Macdon, McArthur, McKenzie, McWatters, Naybob, Nor Cdn, O'Brien, Okalta, Omega, Pamour, Perron Gold, Pick Crow, Powell, Preston, St. Anibo, Sand River, Senator, Sherritt, Siscoe, Slave Lake, Steel Rock, Sturgeon, Sylvanite, Teck Hugh, Toburn, Uchi, Upper Cdn, Ventures, Westbank, West Harg.

Market At A Glance

(By The Canadian Press) Toronto—Industrial and mining stocks higher; western oils unchanged. Montreal—Utilities, papers and golds higher; other industrials lower. New York—Stocks closed unchanged. Winnipeg—Wheat 1-8 of cent higher to unchanged.

CURRENCIES

NEW YORK, Dec. 22—(AP)—The Hong Kong dollar rose nearly 1-2 cent to 23.82 United States cents in the free foreign exchange market Saturday. Other major rates, including the pound Sterling at \$4.04 for open market cables, were unchanged. The Canadian dollar also was unchanged at 86 3-4 cents. (Ottawa Foreign Exchange Control Board rate 9.09-9.91 per cent discount.)

Produce Prices

MONTREAL, Dec. 22—(CP)—Produce Market prices here Saturday, as reported by the Dominion Department of Agriculture, follow: Butter, first grade creamery price, 38; first grade skids, 37 1-2; Quebec no 1 pasteurized, fresh and regraded, wholesale jobbing price, 36 7-8; Quebec no 2, 36 1-8. Receipts: Western white, current price, 13 15-16-17; colored, current receipt price, 14 7-16-15; white and colored, wholesale price, 14; Quebec white and colored, current receipt price, 13 3-4; wholesale price, 14. Eggs: graded shipments in used free cases, selling price, A—large 31 1-2-32; A—pulleys 27-27 1-2. Potatoes: Que whites no 1 75's 50-65; no 2 40-55; NB mountain, no 1 75's 65-70; PEI cobbler no 1 75's 65-70; PEI mountain, no 1 75's 70-75.

FINANCE

By Frederick Gardner Associated Press Financial Writer NEW YORK, Dec. 22—(AP)—Buying support came in for scattered favorites in Saturday's stock market but the list on the whole followed a generally unsatisfactory week with inconclusive trends. The Associated Press average of 60 stocks was unchanged at 43, leaving it about where it was in September of this year and 1939. It was the seventh consecutive session in which the composite had been unable to post a plus sign. Year-end tax-selling in several low-priced stocks again accounted for a sizable portion of the volume which amounted to 420,992 shares compared with 390,360 last Saturday. In the Canadian section of the big board, Mines closed 1-8 up at 15 7-8. International Nickel was unchanged at 23. Among the better American performers were General Motors, Glenn Martin, American Telephone and Telegraph, U.S. Gypsum, Standard Oil of N.J., Texas Corp. and Great Northern. Losers included Chrysler, U.S. Rubber, American Smelting, General Electric, Allied Chemical, Douglas Aircraft and International Harvester.

MONTREAL, Dec. 22—(CP)—Light buying filtered through dormant stock market trade in Saturday's abbreviated session. Montreal Power and Brazillan gained 2 1-4 and 5 5-8, respectively. B.C. Power "A" sold unchanged at 26. Nickel firmed 3-8 in base metals and Hudson Bay Mining sold up 1-4. Smelters, however, lost 3-4 in light sales. Noranda held even at 58. Bathurst sprang an advance of 1-4 as St. Lawrence Corporation at 2 1-4 moved to either way. C.P.R. backed the minimum fraction. Canada Steamships preferred, most active issue of the session, climbed 1-2 to 18. Canadian Industrial Alcohol closed slightly higher while Imperial Oil and Dominion Bridge remained stationary. Total sales: 4,900; Industrials: 3,700; Mines: 1,200; Bonds: \$1,500.

Grain

CHICAGO, Dec. 22—(AP)—Unsettled by rapid fluctuations of the December wheat contract associated with winding up of trading in these deliveries, wheat prices closed unevenly Saturday. Deferred deliveries, finished fractionally lower reflecting preliminary forecast of a big 1941 winter wheat crop, but the December option closed unchanged to 3-4 cent higher.

Wheat closed 1-2 lower to 3-4 higher compared with yesterday's finish, December 89 3-8-90, May 84 1-8-1-4, July 79 1-8-78 7-8; 1-8-1-4; down, December 66 1-8-1-4; oats 1-4 to 1 1-2 higher.

WINNIPEG, Dec. 22—(CP)—In light trading, wheat futures prices displayed a firm tone today on the Winnipeg grain exchange. At the close values were 1-8 cent higher to unchanged with December 72 3-4, May 76 3-8 and July 76 cents.

TORONTO, Dec. 22—(CP)—Stocks held narrowly to the up side in a quiet Saturday session. Turnover of 183,000 shares was only fair for a Saturday session.

Kerr-Addison advanced to a record high at 395 and then sagged to close at 385 for a net gain of 15 cents. Sylvanite firmed 1 cent to 296, Anuror 10 cents to 240, Chesterville added 10 cents while trading in sizeable volume and gains of about 5 cents were netted by East Main, Preston and Teck. The Buffalo-Ankerite advanced 15 cents to 4.35.

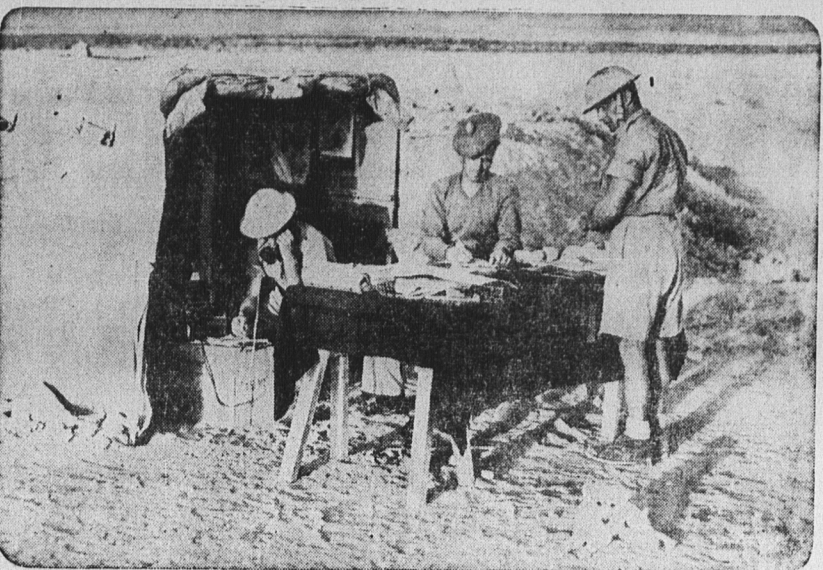
Base metal stocks had a dull session and few changes. Hudson Bay and Noranda were 3-4 and Ventures weakened 5 cents.

Minor gains were netted by Walkers common, Laura Secord and Brazilian Tractin against small declines for A.C.P.R. and Loblaw B. Canada Steamships pfd advanced 1-4 to 18, Dominion Foundries, Steel of Canada and Moore Corporation advanced 1-2 or more and the close of a bit lower for Westons, Abitibi pfd, Canada Steamships common and Brantford Cordage. Home sold at 235 and Calgary-Edmonton at 140.

Preparing Cockerels For Market

(Experimental Farms News)

In view of the increasingly keen appreciation of quality by the consumer of dressed poultry the producer should pay greater attention to finishing his birds before they are marketed. For an entirely different reason also he should properly prepare his birds because of the greatly enhanced returns which such preparation will bring, states H. S. Gutteridge, Poultry Division, Dominion Experimental Farms Service. A vigorous stock is worthy of the attention necessary for proper finishing. All unhealthy or unthrifty birds should be culled, and indeed should have been culled long before reaching market weight; the remaining birds should be fattened in crates or pens until they have fully responded to treatment. In crate fattening, which is the most efficient method of finishing, the birds are confined to crates usually with four birds to each compartment of approximately 2 feet x 16 inches high, and given only soft mixed fattening feed. On being placed in the crates they are starved for twenty-four hours and then given their first feeding of a wet mash composed largely of ground grains and mixed with skim milk or buttermilk to a sloppy consistency. Epsom salts at the rate of one pound per one hundred birds should be mixed in with this first feeding. Two feedings day are as satisfactory as a greater number. Because of the inactivity brought about by the restricted quarters of the fattening crate the appetite must be maintained by feeding only such quantity of mash at each feeding as will be cleared up in twenty minutes, any unconsumed residue being removed and fed to other birds. Usually the appetites of the birds are the best guide as to how well they are fattening and any marked slackening of feed consumption should be a good indication that they should be marketed for fear of loss of weight. As a rule, two weeks of crate fattening is sufficient, and because of the greater fattening response, the most economical fattening period. If appetite is well maintained three weeks of fattening may be successful. The best grains for fattening are oat groats and corn and they should be coarsely rather than finely ground, white corn being used if white finishing is required. Somewhat less satisfactory are buckwheat and wheat with oats and barley being considerably less efficient. If oats or barley are used their efficiency can be increased by sifting out as much hull as possible. A combination of any of the above grains bearing in mind their comparative value as above stated is satisfactory. If



This is a company headquarters of an infantry battalion. They are operating from mobile headquarters and having a hard job to keep up with modern Caesar's chariots.

available 5 to 7 per cent of melted mutton or beef fat mixed quickly with the ground grains while hot to avoid lumping, will definitely increase gains. Birds should be starved for at least sixteen to twenty hours with water to drink before killing for market to be sure their crops are empty. The greatest care should be exercised in killing and plucking to procure a proper bleed and to avoid skin tears and pin feathers. All blood should be removed from the head parts and the legs and feet scrubbed clean.

OUT OUR WAY

By J. R. Williams OUR BOARDING HOUSE

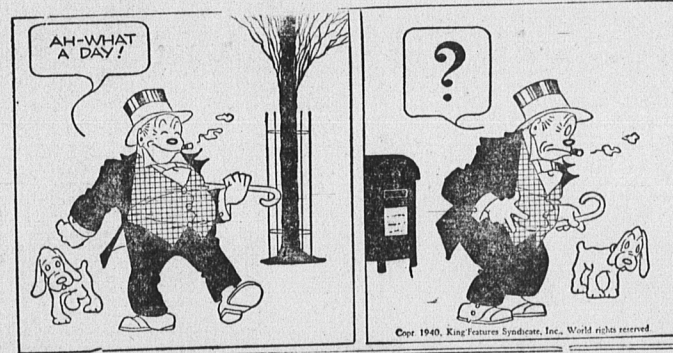


WHY MOTHERS GET GRAY JR WILLIAMS 12-23

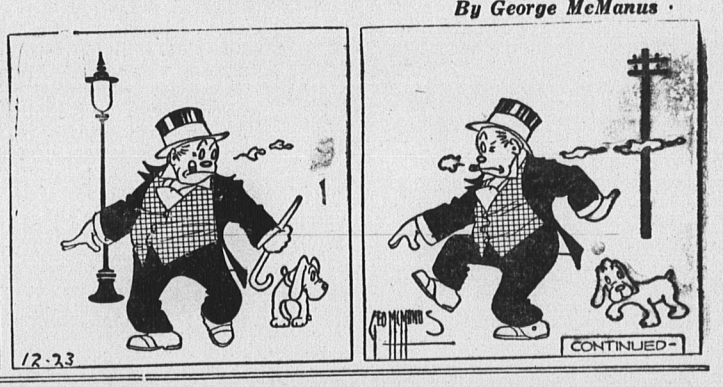


KNOW ANY OTHER GAMES, JAKE? 12-23

BRINGING UP FATHER



12-23



12-23

Thimble Theatre—Starring POPEYE



12-23



12-23

TIPPLE AND "CAP" STUBBS



12-23



12-23

TITTLE THE TOILER

A "REASONABLE" EXPLANATION



12-23



12-23

LONDON, Dec. 21—(CP)—The Institute of London Underwriters decided today to quote war risk insurance rates—the first since 1914—entered the war—on cargoes between Australia and the southern and eastern parts of Africa and Haifa (Palestine), Alexandria (Egypt), the Red Sea, Suez and Port Said.

McLEOD & BENTLEY W E BENTLEY K.C. I A BENTLEY K.C. C F BENTLEY L.L.B. Barristers and Attorneys-at-Law MONEY TO LOAN 180 Richmond Street

MORRELL & CO. D. F. ARCHIBALD Chartered Accountants Eastern Trust Building Charlottetown

M. ALBAN FARMER S.A. L.L.B. BARRISTER, SOLICITOR, ETC Canadian Bank of Commerce Bldg MONEY TO LOAN

ALEX W. MATHESON BARRISTER, SOLICITOR, ETC Money to Loan Collections Office: 90 Great George St.

Advertising Rates Payable in Advance Minimum Charge for any Advertisements 25 Cents Central Guardian locals, 5c per word; Western and Eastern locals 5c per word; Announcements and Coming Events 3c per word; Classified 3c per word; in Memoriam Notices 70c per inch; Lists of Floral and Spiritual Offerings, Cards, etc., 5c per name; Letters of Condolence 70c per inch. Wedding engagements 40 words; Notices of Thanks and Appreciation, 70c per inch or 4c per word. Lists of Subscriptions 1 cent per inch. Address and Presentation \$1.00. Other rates on application.

Wanted WANTED — POWER GRAIN Cleaner. Apply Box X, Guardian. L-595-12-20-31. WANTED SMALL HEATED furnished apartment for three or four months. Write G. Guardian. L-715-12-23-31.

Agents Wanted IF YOU WANT TO START A business of your own and become independent, write today for the 30-day proposition. No risk under thirty day trial offer. The most complete line offered with Free Products for consumers. Start now to begin the new year right. Women and men accepted. Apply at Jito, 1435 Montcalm, Montreal. N-3.

Help Wanted WANTED — FOUSTRY KILLER and pliners. Apply Livestock Feeds, 60 Fitzroy St. L-708-12-21-24.

For Sale FOR SALE — GOOD VIOLIN, A1 condition. Mrs. Andrew Jardine. L-713-12-23-11. Freetown.

FOR SALE—PULL BRED SHORT-HORN Bull. Millar Agricultural, Kingston. L-716-12-23-21.

FOR SALE—GREAT DANE PUPPIES, 6 weeks old. Mother full sister to Tony owned by Quints. Price low. Apply Dunbar Charlottetown. L-615-12-20-31.

Male Help Wanted MEN BETWEEN 40 AND 50. GOOD news! Good money! A \$10,000,000 Company in business for 73 years has a few local openings for men like you, enjoying good health, who are seeking steady occupation and find their age a handicap. Don't fail to apply. This is your opportunity. Credit furnished parties who qualify. Write Mr. Gardner, 2177 Masson St. Montreal, Que., Dept. Z-C-1A. L-708-12-21-24.

Mortgage Sale

To be sold at public auction in front of the Court House in Charlottetown, Queens County, in the Province of Prince Edward Island on Thursday, the ninth day of January, A. D., 1941, at the hour of twelve o'clock noon, all and singular that certain parcel of land and premises situated being and being in Lot 34 in Queens County aforesaid, bounded and described as follows that is to say: on the North by land now or formerly in the possession of Abraham Garburn, and on the West by Winter River and by lands now or formerly in the possession of Parker Hooper, containing One Hundred and Two acres of land, a little more or less. The above sale is made under and by virtue of a power of sale contained in a certain Indenture of Mortgage bearing the date the twenty-third day of June, A. D., 1925, and made between Henry W. Mellick of Suffolk in Queens County in Prince Edward Island, Farmer, and Ethel Mellick of Suffolk, his wife, having been made in payment of the principal and interest secured by the said Mortgage. For further particulars apply to the office of H. F. McPhee, Solicitor, Charlottetown. Dated this sixth day of December, A. D., 1940. ROSE STEWART.