

STOCK QUOTATIONS

Montreal Stock Exchange

Stocks	Close
Bell Tel	158 1-2
Bank Silk	6 3-4
B C Power A	26
Prod Products	14 1-2
Can Cement	2 3-4
Can Car Found	25
Can Car Pfd	9 3-4
Can Ind Al A	5 1-2
Can Pacific	4 3-4
Can Steamship	27 3-4
Colasene	26 3-4
Dist Seag	9
Dan Steel B	14
How Smith	13 1-4
Imp Tob	36
Int Nickel	5 1-2
McCull Front	28 1-4
Mt Power	27
Nat Brew	16 1-4
Noranda	2 1-2
Shawinigan	15 1-4
St Law Com	15 1-4
St Law Pfd	72 1-2
St of Can Pfd	1
W. Elec A	
W. Elec B	

BANKS

Stocks	Close
Canada	160
Commerce	165
Montreal	
Royal Bk	
Nova Scotia	

Market At A Glance

(By The Canadian Press)

Toronto and New York—Stocks closed lower.

Montreal — Utilities unchanged; golds and papers higher; other industrials lower.

Winnipeg—Wheat 1-8 cent lower.

New York—Cotton and sugar lower; coffee higher.

FINANCE

By Frederick Gardner
Associated Press Financial Writer

NEW YORK, Jan. 16—(AP)—The stock market suffered another setback that reduced prices of stocks and pivotal industrials 1 to 2 points and less showed for Dow Jones which was the steepest down 3-5.

With the exception of Shawinigan, a small fraction, Canadian stocks slipped in a body. Losses of 1-2 point and less showed for Distillers Sagram, Dome and Lake Shore Mines, International Nickel, Walkers, Bell Telephone, Canadian Traction, Imperial Oil and Massey Harris.

Volume was not large at any period although transfers stepped up to 601,720 shares against 386,580 yesterday which was the smallest turn over in about three months.

The Associated Press average of 60 stocks was off 5 of a point at 42.8. When the recovery shift got under way on Jan. 3 the composite stood at 44.1. A month ago the average was 43 and a year ago 49.95.

After today's close a syndicate of 17 stocks were the very American Oil of N.J. from a domestic estate at the final quotation of 34 1-2 which was off 1-4 of a point from Wednesday.

Prominent share losers were U.S. Steel, Bethlehem, Chrysler, General Motors, U.S. Rubber and preferred, Dow Chemical, Du Pont, Westinghouse, American Can, Texas Corp., Douglas Aircraft, American Smelting, Western Union and Johns-Manville. Among weak senior stocks were the American Locomotive, International Agricultural Chemical and International Paper.

Citic Co. made a new 1940-41 high consolidated cigar common and preferred were among the gainers, along with Reynolds Tobacco "B" and Air Reducti Co.

MINING

Stocks	Close
A P Con	9
Aldermac	15
Anglo Cdn	66
Aurifer Gold	230
Bagamac	12
Bear Ex	15
Beattie	120
Blythe	11 1-4
Brown Oil	3 1-2
Buff Ank	500
Buff Cdn	4 1-2
Chalmor	50 1-2
Cdn Mal	255
Cariboo	190
Cent Pat	19
Cent Por	30
Chem Res	160
Chester	96
Chromium	150
Chiantium	15
Davies	119
Denise	8
Denton	24 1-4
Duquesne	16
East Mal	283
Falcon	286
Ferri Kirk	4 1-2
Ferland	48
Franceour	38
Gods Lake	10
Gold Eagle	36
Gunnar Gold	2 1-4
Halrow	106
Hard Rock	6 1-4
Harker	12 7-8
Hollinger	240
Howey	29
Jack Wal	25
Kerr Add	370
Kirk Hud	30
Kirk Lake	99
Lakeshore	19 1-2
Lana Cad	9 1-2
Leitch	54
Little L.L.	20
Macassa	410
MacLeod	225
Malartic	113
Marian	1 1-4
McKenzie	128
McVittie	7 3-4
McWatters	22
Noranda	53
Northern	29 1-2
Norstar	56
Obrien	35
Okalla	90
Omega	103
Pacala	70
Pamour	15
Paymaster	152
Perron Gold	24 3-4
Pick Crow	165
Pioneer	289
Povell	220
Preston	95
Roche	330
St Ant	4 7-8
San Ant	11 1-2
Sand River	258
Senator	7
Shawky	55
Sheriff	2 1-2
Siscoe	81
Sladen	55
Slave Lake	19
Straw Lake	160
Sullivan	4 1-4
Teck Hugh	61
Toburn	355
Towagmac	175
Trane Res	13 1-2
Uchi	37
Upper Cda	211
Ventures	41
Waite Amu	385
Wendro	375
Wit Harg	24
	690

N. Y. Stock Exchange

Stocks	Close
Am C and F	28 1-2
Am Tel Tel	167 1-2
Anacord	25 3-4
Baldwin Loco	17
Bendix Av	34 7-8
Beth Steel	85 1-4
Ches Ohio	43
Chrysler	67 1-8
Con Edison	22 1-2
East Auto Lite	32
Gen Elec	34 1-8
Gen Motors	46 1-8
Gt Nor Pfd	26 1-2
Int Nickel	34 3-4
Mont Ward	33 1-4
N Y Central	13 3-4
Nor Am Co	16 5-8
Phil Res Co	23 1-4
Std Oil NJ	34 1-2
Texas Corp	37 5-8
United Al	42 1-8
U S Rubber	22 3-8
U S St Co	66 1-8
Vanadium	31 3-4
West Union	21 1-8
Woolworth	

Montreal Curb

Stocks	Close
Abhibl Com	75
Abhibl Pfd	6 1-4
Abhibl	16 1-2
B A Oil	17
Beauharnois	12 3-4
Bell A	9 1-2
Fraser VTC	9 1-2
Fraser	15 1-2
Ford A	4 1-2
Int Nickel	9 3-4
Int Pet	15
Price Com	12
Pric Pfd	

FOR SALE
BUSINESS STAND
— At —
VERNON RIVER.
Conveniently located,
on paved highway
Electric lighted
Price reasonable
H. M. BROTHERS
Cardigan, P.E.I.

Professional Car.
MORRELL & BENTLEY
W E BENTLEY R.C.
A A BENTLEY R.C.
C F BENTLEY L.L.B.
Chartered Accountants and Attorneys-at-Law
MONEY TO LOAN
180 Richmond Street

MORRELL & CO.
D. F. ARCHIBALD
Chartered Accountants
Eastern Trust Building
Charlottetown

M. ALBAN FARMER
B.A., LL.B.
BARRISTER, SOLICITOR ETC
Canadian Bank of Commerce Bldg
MONEY TO LOAN

ALEX W MATHESON
B.A., LL.B.
BARRISTER, SOLICITOR ETC
Money to Loan Collections
Office: 50 Great George St

PALMER & HASLAM
A. J. HASLAM B.A., LL.B.
BARRISTER, ETC.
Bank of Nova Scotia Chambers,
Charlottetown P.E.I.
MONEY TO LOAN

BELL & MATHESON
MONEY TO LOAN
Cameron Block Charlottetown
P. E. Island

H. F. McPHEE B. A. K. C.
NOTARY &c.
BARRISTER SOLICITOR
415 Building Charlottetown
P. E. Island

McGUGAN & TRAINER
MARK R. McGUGAN K.C.
C ST CLAIR TRAINER K.C.
Barristers, Solicitors, Etc.
MONEY TO LOAN
Office: Over Provincial Bank,
Richmond Street, Charlottetown

Currencies

NEW YORK, Jan. 16—(CP)—The free gold market closed 1-2 cent lower at \$402 1-2 for open market cables in foreign exchange dealings today.

Also down a shade were the Argentine "free" peso at 29.77 and Hong Kong an Shanghai dollars at, respectively, 38 and 54.4. Other major currencies were unchanged. The Canadian dollar closed at a discount of 14 1-4 per cent. (Ottawa Foreign Exchange Control Board rate 9.09—9.91 per cent discount.)

GIRL MILK DRIVER CAUGHT IN SHOWER
HANOVER, Me., Jan. 14—(CP)—Gaily-wrapped gifts and notes were tied to empty milk bottles on many doorsteps here one day recently when Miss Ida Babineau, a dairy employee, made her early morning rounds. The packages and messages were Miss Babineau's customers way of giving her a shower in honor of her approaching marriage.

FOX MEAT
Boneless Horse Meat
50's 5c Lb.
Ground Meat 50's — 5c lb
Beef Tripe 50's — 4 1-2c lb
Calf Tripe 50's — 3 1-2c lb
ABOVE MEATS ALL NEW PACK
Island Cold Storage
Company

Advertising Rates Payable in Advance

Minimum Charge for Any Advertisements 25 Cents

Central Guardian locals 5c per word; Western and Eastern local 10c per word; Announcements and Coming Events 3c per word; Classified 3c per word; In Memoriam Notices 70c per inch; Lists of Floral and Spiritual Offerings, Cards, etc. 5c per name; Letters of Condolence 70c per inch; Wedding engagement 40 words for \$1.00 and 10 cents for every additional 10 words. Notices of Thanks and Appreciation, 70c per inch or 1c per word. Lists of Subscriptions: 1 cent per inch Address and Presentation \$1.00. Other rates on application.

Miscellaneous
FOR PRIVATE TUTORING CALL
Jean Ross, 390-J, L-287-1-17-21.

Wanted
BLACKSMITH WANTS GOOD
stand. Apply Fulton Digwell,
Morell, L-288-1-17-11.

To Let
FOR RENT — NICELY FURNISHED
bedroom "heated", suitable for
business lady or gentleman. Cheap
rent. Apply Guardian.
L-285-1-17-21.

For Sale
FOR SALE—A DOUBLE BED.
Apply 8 Euston St. Phone 628.

Produce Prices

MONTREAL, Jan. 16—(CP)—Produce market prices here today, as reported by the Dominion Department of Agriculture, follow:

Wheat: first grade creamery prints, jobbing price, 35 1-4—36; first grade golds, jobbing price, 34 3-4—35 1-2; Quebec no 1 pasteurized, regraded, wholesale price, 34 1-4; Quebec no 2, regraded, 33 1-4; Cheese: Western white, current receipt price, 14 1-16; western colored, current receipt price, 14 9-16; western white and colored, wholesale price, 14.

Eggs: graded shipments in used free cases, selling price, A—large 26; A—medium 24; A—pollets 22.

Potatoes: Que whites no 1 75's 65—70; no 2 45—55; NB mountains no 1 75's 70—75; PEI cobs no 1 75's 75—85; PEI mountain no 1 75's 75—85; Bermuda reds no 1 50's 150—165.

Toronto Exchange

TORONTO, Jan. 16—(CP)—The stock market developed a heavy tone this afternoon and closed at bottom for the day. Turnover of 365,000 shares was a little heavier than the recent averages.

British American Oil and International Petroleum reacted to show losses of 1-2 and 7-8 respectively while Imperial, Canadian and Steel of Canada and fractions of 1-4 to 1-2 for Canadian, Canadian Dredge, Canada Cement, Laura Secord, Walkers common and Distillers-Sagram. Canadian Industrial Alcohol: A firm 1-4 to 2 3-4 on publication of the greater earnings statement.

The Sheep Rock price slipped 8 cents to 150. Nickel and Noranda weakened 3-8 to 1-2 and losses of 15 and 7 cents respectively were posted by Ventures and Pender Orellie. Sherritt eased off 4 cents to 81.

Buffalo-Ankerite was a weak spot in the golds, showing a loss of 50 cents to 85. Lead, Tin and H. I. Silver eased off 5/16, fractions and McIntyre firmed 1-4 to 50 1-4. The close was down 5 cents for Continental, East Main, Kerr, Allison, Macassa, Pioneer, Teck Hughes and Wright-Hargraves and a little higher for Delite, Pickle Crow and Tschurn.

Home Oil weakened 8 cents to 2.40 and recessions of 2 to 6 cents were noted by Anglo-Canadian, Calgary and Edmonton and Okalla.

Grain

WINNIPEG, Jan. 16—(CP)—Wheat trading remained in the doldrums today on the Winnipeg grain exchange. At the close of the full session, futures prices were 1-4 cent lower, with May wheat at 77 3-8 and July 79 cents a bushel. Buenos Aires prices held about unchanged.

Grain close:
Wheat: May 77 3-8, July 89.
Oats: May 35 1-4B, July 33 3-8, Oct 31 5-8A.
Barley: May 45 5-8, July 43 3-4 B.

Gotham Seeing Spring Styles

By AMY PORTER
Associated Press Staff Writer
NEW YORK, Jan. 14 (CP)—Dropped shoulders, harem drapes and capes promise to be the novel trends in spring wearing apparel.

These three style points were featured again and again in models shown at Fashion Futures, New York's large-scale January style show.

In fact, there was the harem drape frock in purple and pink—a prophetic model. The hemline is caught up at centre front for drape effect. The model had a pink mouseline de soie skirt and parasol. The bodice was purple.

The show represented the cooperative effort of manufacturers, designers and leading retailers to establish New York as the new style centre of the world and to point style trends for the coming season. Show plans were in charge of the Fashion Group, Inc., a nation-wide organization of women engaged in fashion careers.

MORE THAN 500 STYLES

More than 500 advance spring styles were shown to an audience of 20,000 retailers. It was the first season of real "independence" for American fashion the influence of Paris and London was still strong (last fall).

If the Futures influence prevails, we'll wear skirts a trifle shorter than at present. Women will gradually modify the padded squared-off shoulder line until it slips naturally. They'll adopt caps, long ones, short ones, light-colored ones, for all-occasion wear in the spring, and will endorse big splashy prints rather than neat little prints for sports and evening wear.

There is no duty we so much under-rate, as the duty of being happy.

Duke's Furniture Turns Up Safely

PORTLAND, Ore., Jan. 16—The month-old mystery of what happened to the Duke of Windsor's rattan furniture from Hong Kong was cleared today in a forgotten hold of the ex-queen's ship.

L. W. Martin, customs broker, said the 52 pieces of furniture and other cargo, totalling 50 tons, were discovered in the ship's hold after the United States lines reported the shipment could not be found on the docks of San Francisco or Los Angeles.

The ship unloaded her cargo a month ago at Los Angeles and then was brought here to be converted into a marine transport. She now is known as the U. S. A. Neville. Herman said he had been instructed to forward the furniture including chairs, settees and drum tables, to the Duke of Windsor at Nassau, his seat as Governor of the Bahamas.

15 DAYS

FRIDAY — SATURDAY — MONDAY

SAVE BY SHOPPING FOR THESE 19c VALUES

LIFEBUOY SOAP Each 7c. 3 For — 19c	London Pkg. 10c CORN STARCH 2 For — 19c	Rump Roast Beef, Lb. — 19c
Eatons BULK COCOA, Lb. — 19c	Rountrees 1/2 Lb. Cake COOKING CHOCOLATE 19c	Roasting Pork, lb. — 19c
Tiger 26 Oz. Bot. TOMATO CATSUP — 19c	Royal Russet 20 Oz. Tin APPLE JUICE 2 For 19c	Bologna Sliced, lb. — 19c
.BIG 5 CLEANSER Tin 5c. 4 For — 19c	DeLuxe Assorted Pkg. 5c. JELLY POWDER 4 For 19c	Head Cheese Sliced, lb. — 19c
SWIFTS PURE LARD 1 Lb. Pkg. 10c. 2 For — 19c	Eatons (No Alum) BAKING POWDER 1 Lb. Tin — 19c	Smoked Fillets, Lb. — 19c
Bulk ROLLED OATS 4 Lbs. — 19c	Culverhouse 10 Oz. Tin 5c. TOMATO JUICE 4 For 19c	Breakfast BACON, sliced, lb. 28c
Bulk ICING SUGAR 2 Lbs. — 19c	Campbells TOMATO SOUP 2 For 19c	PORK CHOPS Trimmed, lb. — 26c
Kraft Canadian CHEESE 1/2 Lb. Pkg. — 19c	LUX Each 5c TOILET SOAP 4 For — 19c	
WHITE BEANS Lb. 5c. 4 Lbs. — 19c	EATONS TOILET PAPER Each 7c. 3 For — 19c	FRUITS and VEGETABLES
Island No. 2 Squat Tin 10c PORK and BEANS 2 For 19c	RINSO Small Pkg. 10c. 2 For — 19c	Fresh lb. 15c SPINACH, 2 lbs. 29c
Cow Brand SODA, 1 Lb. Pkg. 10c. 2 For 19c	Aylmer Asst. SOUPS Except Chicken Tin 10c. 2 For — 19c	NEW CARROTS, bunch 10c
Quaker Puffed RICE OR WHEAT Pkg. 10c. 2 For 19c	Palm Brand SHRIMPS, 3/4 Oz Tin — 19c	NEW BEETS, bunch — 10c
McCORMICKS GOLDEN FIG BARS, Lb. — 19c	Eatons Artificial VANILLA 16 Oz. Bottle — 19c	RHUBARB Lb. — 23c
Fancy Pink SALMON, 16 Oz. Tin — 19c	Arrow Brand PEAS, 16 Oz. Tin 10c. 2 For 19c	CAULIFLOWER Head — 30c
Eagle Brand MILK, 15 Oz. Tin — 19c	Aylmer 16 Oz. Tin 10c. STRING BEANS 2 For 19c	Choice GRAPES, lb. — 21c

THE CANADIAN STORES LTD

Conference At a glance

(Canadian Press)

Opening address of Prime Minister Mackenzie King favors adoption of Rowell-Sirois Commission recommendations.

Provincial premiers divided evenly.

For—Bracken of Manitoba, Patterson of Saskatchewan, Campbell of Prince Edward Island.

Against—Hopman of Ontario, Pattullo of British Columbia, Abernethy of Alberta.

Non-Committal — Godbout of Quebec, McNeil of New Brunswick, MacMillan of Nova Scotia.

Meeting called for Wednesday at 10 a.m. to determine conference procedure and decide whether revision of deliberations will be open to the press.

"Aryanization" of Paris Jewish concerns

PARIS (Via Berlin), Jan. 12—(Delayed)—(AP)—The "Aryanization" of 11,000 Jewish concerns in Paris is going forward rapidly, officials said today, and all establishments are expected to be in the hands of non-Jewish owners and dark fire-like tones. There's about 5,000 are retail stores. They are receiving first attention.

The stores were first placarded with yellow signs labelling them as Jewish. Later red signs have appeared, indicating the business designated has been taken over by a commission named by the French authorities with "approval" of the German-occupation authorities, whose function is to see that the business is promptly sold to an "Aryan" purchaser.

Simple Plan in Rationing

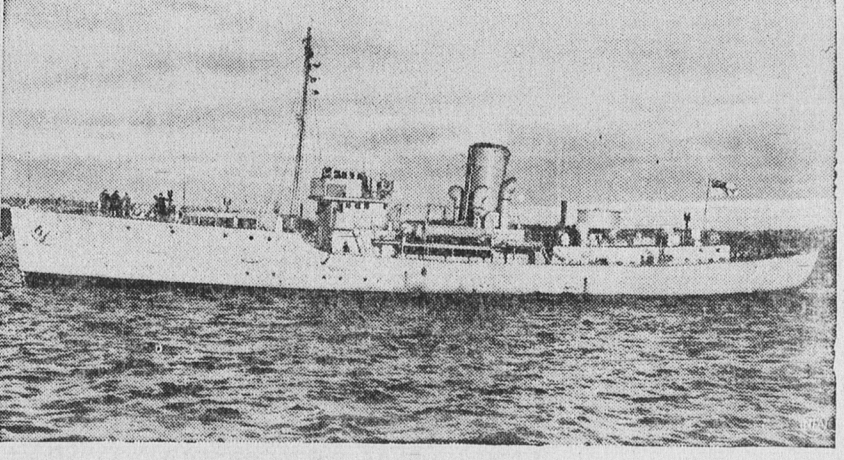
LONDON, Jan. 14—(CP)—Reforms in rationing procedure to save labor, time and paper, are being introduced by Lord Woolton, minister of food.

When new books come into use shortly, coupons will be cancelled by retailers with a rubber stamp instead of clipped, obviating handling 14,500,000 coupons a year in stores and food offices. In addition, 15,000,000 coupon envelopes made from 75 tons of paper, will be saved.

Twelve-month ration books, instead of the present six-month book likely will be available next year and these will save 1,000 tons of paper a year. The cost of producing one edition of 57,000,000 ordinary ration books is about \$311,500 while the postal delivery to the public costs about \$400,500.

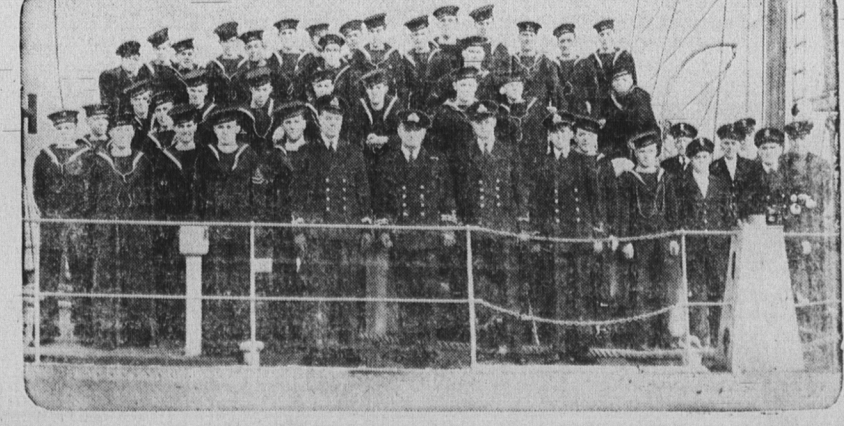
Demands for automobiles in Burma is now greater than the supply.

Canada Prepares a Surprise For German Subs



First picture to be released showing one of Canada's new "Corvettes." OTTAWA, January—The Royal Canadian Navy is preparing a surprise for enemy surface and underwater craft which may venture into Canadian waters. The first of a series of "Corvettes" have gone down the ways and into active service.

These little craft are "hush-hush" as far as speed and armament are concerned. There have been guesses and speculations but these have been so wide of the mark that Canadian naval officers are chuckling and hoping the good work of manufacturing the enemy keeps up. The "Corvettes" are of whaleback type similar to but distinct from a slow sloop. They carry a crew of 50 to 62 officers and men. In addition to their primary armament they carry what the navy succinctly terms "adequate" anti-submarine armament. They are good sea boats and are designed specifically for escorting duties on the Atlantic and elsewhere.



A typical corvette crew is shown assembled on the deck of one of the new vessels.