

### History and Government

(Continued from page 9)

1873, the Government of the day resigned and the Lieutenant-Governor informed the Leader of the Opposition that he would be called upon to form an administration, providing that assurance was given that the new Premier would do all in his power to bring about the entry of the Colony into Confederation. This was declined in the following language:

"Allow me to thank you for this mark of your confidence and to assure you that while I should be most happy to form a Government which should advise Your Honor in accordance with the wishes of its people as expressed through their representatives in Parliament, I must, however, decline the honor of attempting to form a Government pledged to Your Honor to pursue any definite policy. I trust that I may be pardoned if I remind Your Honor that the people of this Island have the right to self-government, and that as one of their representatives I can never undertake at the instance of the representative of the Crown to do any act calculated in the slightest degree to abridge this right. I consider Confederation most desirable, and as one member of the Assembly I should do all that may be in my power to insure the speedy admission of the Island into the Union on terms just and equitable."

The Provincial Government consists of only one House—the Legislative Assembly. In 1893 the Upper House, called the Legislative Council, was amalgamated with the Assembly. The Legislature has thirty members—fifteen Assemblymen elected on the general franchise, and fifteen Councillors elected by property-holders. All persons over the age of twenty-one and not otherwise disqualified, are allowed to vote. The term of the Legislature is for four years, and the Speaker is elected by the House. A Liberal Government is at present in power and the division stands twenty-four to six.

The Provincial Building was built in 1843 and is the second oldest Seat of Government in English-speaking Canada, the Province House at Halifax being somewhat older.

### Marketing Potatoes

(Continued from page 9)

er requires his stock. Potatoes are piled on donage, four sacks high with air spaces between each row. The warehouses are made practically airtight and darkened by nailing black paper over the windows. The doors are opened at night, thus giving the potatoes the benefit of the colder night temperature. At daybreak the doors are closed. The result is that the interior temperature is held at a lower degree during the day than the exterior temperature. The importance of this will be recognized when it is realized that in the Southern States the mid-day temperature during the Winter months often reaches 65 degrees. The problem of non-refrigerated storage is therefore one of holding back germination rather than protecting the potatoes against frost, and it is rarely ever necessary to use heat. The average cargo consists of 20,000 sacks of 2½ bushels each, although at times much larger cargoes are shipped. This Province holds the record of having shipped the largest cargo of potatoes ever moved by water, totalling somewhere in the vicinity of 2,000,000 bushels on one ship.

### WHISPER CAMPAIGN AGAINST SMITH BROUGHT TO LIGHT

NEW YORK, Sept. 28.—The New York Evening World, a Democratic newspaper strongly supporting Governor Alfred E. Smith for the Presidency, announced today it has asked its correspondents in Southern States to make a survey of the alleged "whisper" campaign waged against the Governor. The evening World prefaced its reports from correspondents with a summary stating: "These reports establish that in the Southern States the mails are flooded with scurrilous pamphlets carrying charges against the Governor, his wife and family. Anonymous, libelous mimeographed sheets are circulated in floods. "It is apparent from the character of this propaganda, carrying the same reports into widely separated localities that it is directed from some central headquarters. "Following are some of the whispering charges carried by word of mouth or through anonymous handbills and pamphlets masquerading as newspapers: "That Governor Smith is an habitual drunkard and has often been drunk in public. "That he holds 'parties' at night in the capitol building and has chosen women state employees in order that they might participate in the parties. "That his secretary is a negro woman. "That there is a photograph extant showing Governor Smith dancing with a negro. (This has been given wide circulation in Florida). "That if Governor Smith is elected he will bring the Pope to America on a battleship and install him in a fortress at Georgetown in which will be installed artillery overlooking the city of Washington. "That if Governor Smith is elected he will put a saloon on every corner. "That Mrs. Smith is uneducated and unfit to meet callers at the White House. "With a new plow ditches for irrigation and other purposes can be made with flat bottoms and sides sloping at any desired angles. "The world's largest all metal airplane, having a wing spread of 150 feet, has been successfully flown in England. "An inventor has combined a residential mail box with a porch lantern phone, beginning with a line from that also displays an illuminated house number. "Swedish interests will connect the principal Turkish cities by telegraph, beginning with a line from Constantinople to Angora. "A California physician has invented apparatus that shows how quickly a person sunburns to warn him against too long exposure to sun's rays.

### Trade Facts and Figures

(Continued from page 9)

ent and unbiased opinion on matters of business. A few facts of special interest about our Island Province may bear repetition. It is the most densely populated of any of the Canadian Provinces; it has the greatest per capita production; it is the only cattle disease-free province in the Dominion, for the eradication of bovine tuberculosis; it is the home of the great silver black fox industry, which produced an estimated revenue to the Province last year of \$4,000,000. The Island cheese last year graded the second highest in the Dominion, while our butter graded the highest in Canada. Our potato industry has brought our Province into national prominence. Our certified seed potatoes have a large market in the Southern States of America, while our table stock is fast capturing the Canadian market. Our live stock represents a value of about \$9,000,000, with an annual revenue of \$7,200,000. From our dairying we derive a revenue of over \$1,000,000. The export and import trade of our Province have increased 400 per cent. within the last ten years. It is estimated that the agricultural value of lands, buildings, implements, live stock, poultry and animals is in the vicinity of \$80,000,000, while the value of our agricultural products may be said to be \$35,000,000. Prince Edward Island struggled for many years under a most serious transportation handicap. In fact, it is only within recent years that many of them have been removed. Our railways last season carried 5,000,000 bushels of potatoes from October to June. Our population may be said to be the most thrifty of the provinces. They are descendants principally of the four great races, the Scotch, English, Irish and the French, a people of sterling worth and a high sense of integrity. Over 97 per cent. of our population are Canadian born. Persons over seventy years of age form more than 6 per cent. of our population, a percentage much higher than any other province. This longevity is attributed in part to the bracing air and the tranquil life of the Island.

**MORE GRAIN MARKETING**  
WINNIPEG, Man., Sept. 26.—Tremendous increases in grain marketing and loading figures last week over the corresponding week of last year are shown in a report issued by T. P. White, superintendent of car service for the Canadian National Railways. A total of more than twenty-two million bushels, in 9,251 cars, was marketed during the week ending last Thursday. This is an increase of more than nineteen million bushels over last year's figures. The amount of grain loaded exceeded last year's figures by slightly more than ten million bushels, this year's being 12,401,000 against last year's 2,350,000 bushels. Grain in store is 17,798,000 bushels, while last year's report recorded 2,213,000 bushels. Bushels of grain loaded since August reached 25,664,000, while the figures for the same period last year were 6,451,000.

Enclosed by bullet proof glass, an observatory for guards in the road features a new armored automobile for transporting money. Swedish interests will connect the principal Turkish cities by telegraph, beginning with a line from Constantinople to Angora. A California physician has invented apparatus that shows how quickly a person sunburns to warn him against too long exposure to sun's rays.

### Farming the Silver Fox

(Continued from page 9)

of early explorers, adventurers and nation-builders for the control of the rich revenues from furs, the glamour of romance gives additional charm. It is known how the fur trade has been inseparably linked with all our material advancement. If the fur trade has had this tremendous influence on the past history of the world, is there any valid reason for our fearing the ultimate result of general fur-farming?

**Quality Counts**  
Fox farming, which is synonymous with fur farming, has succeeded most conspicuously with animals which are extremely rare, and which have a high pelt value because of the quality of the fur and the impossibility of imitation. The men who gave birth to this new industry laid no claim to a knowledge of the biological principles underlying their venture, but simply recognized that when fortune brought to the trap a rare silver black fox it meant a greatly increased revenue from their fur sales. Man's desire for money was the real force in determining commercialized conservation, and upon the intensity of that desire today depends largely the success or failure of the enterprise.

**Selection of Stock**  
Selection of foundation breeding foxes is the main essential in successful fox ranching, and this is a subject in itself that requires much experience combined with the selective natural instinct dominant in some men, who have made the greatest success in the breeding of race horses, dairy cattle and poultry. The fox farmer is always advised, and rightly so, to procure pure bred, registered, pedigreed animals, keeping in mind conformation for Show purposes, but the sum total of one's selection must be fur quality in relation to fur value. It is always wise to select foxes with quantity and quality of fur, with fine silky texture and clear in color. By clearness in color is meant that the black must be free of that raven bluish black tint, free from any rufous shades common to his vulgar ancestors; and the silver markings must have that bright sparkling metallic hue with the silver banded hairs and sparkling tip. Having made the foundation selection, the next step is the scientific mating of the individuals. It is generally believed that "like tends to beget like," but this must not be confused with the saying "like begets like." In mating the foxes selected one must never lose sight for a moment of the desirable types required by the demand of the fur trade. The scientific breeder must believe and act upon Darwin's postulate—"the survival of the fittest." Much could be said on selective mating, inbreeding and line breeding, but another chapter would have to be added, so a mere definition of these terms must now suffice.

**Other Pointers.**  
Selective mating is the mating of certain desirable types of perfect physical specimens regardless of relationship so as to intensify in the offspring the highest qualities of the ancestors. Line breeding is mating animals that are cousins of different degrees; while inbreeding is mating sire to daughter, dam to son, or brother to sister. Sanitation of fox pens and dens means simply and always, cleanliness; and if cleanliness is carried out healthy foxes will be the result, and there is no animal within or without the domestic fold that has so many qualities as the healthy silver black fox when its fur is prime. This perfection has inspired the poet, enraptured melody, and awakened the desire of riches in man. In conclusion, Prince Edward Island is the Silver Fox Fur Chest of the world. Its secluded wooded lots constitute the centre of fur-farming conservation in the best part of the world's fur zone. With a soil free from alkali, with climatic and moisture conditions ideal for texture, color and quantity of fur, Prince Edward Island has become world famed for the production of silver fox furs. The local buyers' market, the distribution centres of London and Montreal, create a constant demand for the peltries of the ranch and pour a steady stream of wealth during the fur season back into the pockets of our fur farmers.

### Live Poultry Industry

(Continued from page 9)

a "Poultry Pullman" car, a special conveyance for live poultry contained 3,679 birds, and is the largest car of poultry ever shipped from the Island, and "in fact from any point within the Maritime Provinces. This car was shipped to the Boston market where live poultry is in good demand to meet the requirements of the Jewish people in connection with the Feast of Tabernacles. The management of the Co-operative is fully alive to the requirements of the egg and poultry trade, and now that shipments of live fowls are over, active preparations are being made to ship cars of live geese and possibly turkeys; in addition to dressing poultry for the Fall markets and for storage holdings to meet the requirements of the trade when current receipts are at the minimum.

The handling of this large amount of poultry by one concern is clear evidence of what may be accomplished when the members of a community pull together. The Co-operative Egg & Poultry is an outstanding example of the benefits which are possible to the producers of products of the farm, and has been the demonstrator for other organizations handling other lines of farm products not only on P. E. Island but throughout the whole Dominion.

### Standard Grading

It should be noted that the Association had, during this year, and also in 1927, graded its poultry in accordance with a new standard of grading, prepared by a committee appointed for the purpose by the Federal Department of Agriculture in 1926. This standard, though not yet law, is generally accepted and is used by all the large poultry dealers in the country. The handling of eggs is the main part of the business as carried on by this Association. Starting in 1914, when the Association was incorporated by which some sixty-five local shipping centres were amalgamated into the present Association with a few hundred thousand dozens of eggs there has been a steady growth until the volume of eggs has increased to over a million dozens handled annually; during 1927, 1,130,000 dozens were handled, all eggs being graded in accordance with Government grading regulations into three grades—Extras, Firsts and Seconds.

The average price paid all members for all grades for 1927 was 30½ cents, some individuals receiving 33 cents to 38½ cents. The steady progress which has been made by this Association has been an outstanding example of the benefits to be derived when producers market collectively.

### Co-operative Shipping

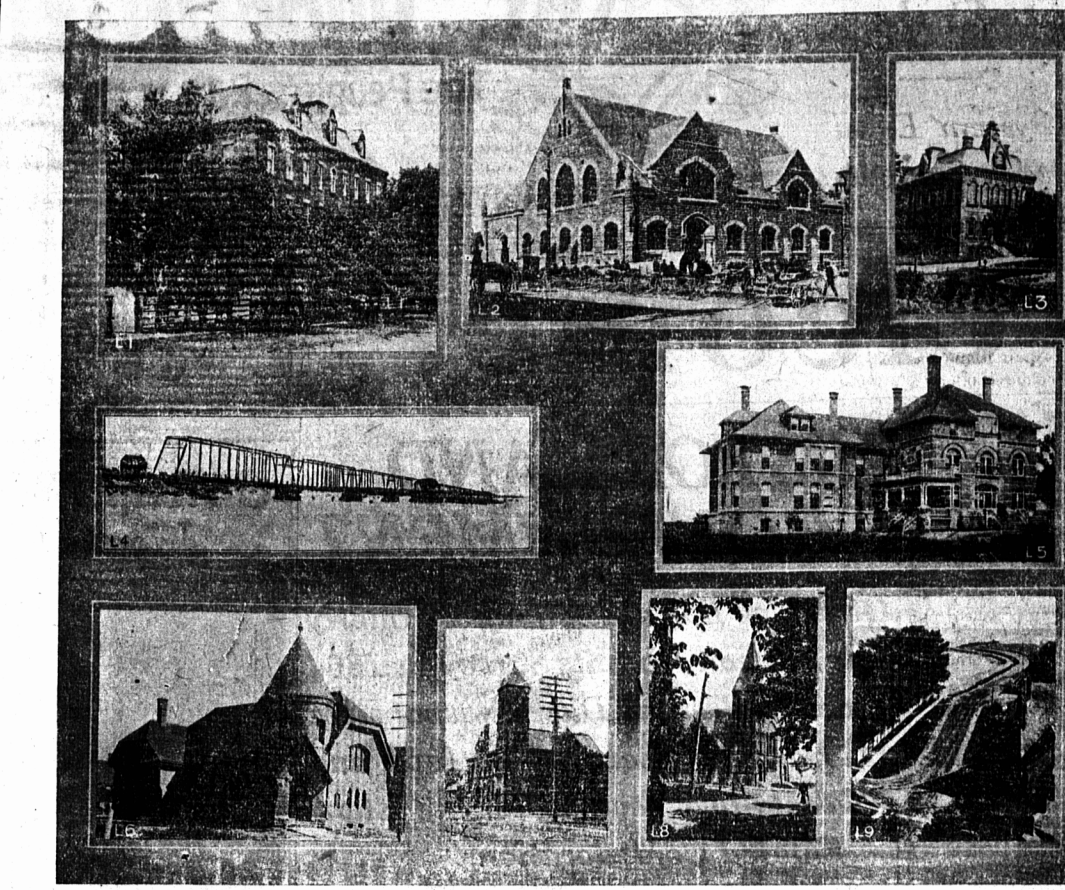
(Continued from page 9)

idea of remedying this situation the Dominion Live Stock Branch undertook to organize throughout the Province live stock shipping clubs through which the farmers would be in a position to ship their live stock direct to the packers during every month of the year, and in addition to sell their live stock in such a way as to have quality fully recognized.

### Results of Organization.

During the winter of 1922-23, such clubs were organized at some of the largest hog-producing districts in the Province. During the year of 1923 these clubs shipped 1,500 hogs; in 1924, 3,000 hogs; in 1925, 4,500 hogs; in 1926, 6,000 hogs; in 1927, 10,000 hogs; and for the first six months of 1928 the Prince Edward Island Live Stock Shipping Clubs have shipped nearly 2,000 more hogs than during the same time in 1927. All the hogs shipped through these organizations have been marketed and payment made in accordance with the government grading standards. As evidence that this grading policy has been a benefit to the Province we have only to note that today Prince Edward Island leads all North America with the highest percentage of Select Bacon Hogs. The Province is also becoming noted throughout North America as one of the best breeding centres for Yorkshire breeding stock. Previous to the adoption of the grading policy Prince Edward Island had numerous breeds of swine, but even at that time the Yorkshire breed predominated. Today the province is, perhaps, the only district of its size having only one breed of hogs, namely, Yorkshire, and it is specializing in this one breed that has placed Prince Edward Island at the top.

### In and About the City of Charlottetown



Reading from left to right:—No. 1, West Kent School; 2, Market House; 3, Court House; 4, Hillsboro Hospital; 5, Central Christian Church; 6, St. James' Church; 7, City Hall; 8, a Peaceful North Shore Road; 9, Prince Edward Island Bridge.

At the present time there are thirty-two live stock shipping clubs in the Province, covering every district and handling practically all of the hogs produced in the province.

### Lamb Marketing.

In lamb marketing Prince Edward Island has always been famous for the quality of its product, but this quality in past years was never duly rewarded. During the first few years of operation the shipping clubs devoted most of their attention to hog shipping, but in 1927 over 8,000 lambs were marketed through these organizations, and to date over 4,000 have been handled in 1928. The live stock shipping clubs have been the greatest factor in increasing the quality and quantity of the sheep and swine produced in the province. With one salesman and one central organization for the three Maritime Provinces, producers have been in a position to obtain the very highest market prices by selling direct to the packers.

### System of Farming.

The system followed by our mixed farmers is usually one of four or five years' rotation, dividing the farm into 25 per cent. roots, corn, and green feed, 25 per cent. grain, 25 per cent. hay, and 25 per cent. pasture. This varies to a certain extent in the five years rotation, when a greater amount of hay and pasture acreage is allotted. The method followed permits the farmer to grow a sufficient quantity of suitable crops to balance his ration for winter feeding. Our best live stock farmers follow a policy of growing their crop in summer and manufacturing it into the higher priced finished products, thus securing a double profit. In this way remunerative employment can be found in winter for the necessary help that must be secured for the summer season. The successful mixed farmers grow one cash crop with their live stock farming, which usually includes certified seed or commercial potatoes, registered seed grain, timothy or brown top seeds. On account of the easily cultivated nature of the soil the farmers' fields in this Province will be noted for their regular checker-board formation, showing no waste, stony or rough land which would spoil the appearance and interferes with working. By reason of our moderate winters the forest growth is very rapid on every well-kept farm, and lumber for fuel sufficient for farm use is usually available. The growth can be harvested every thirty years. The annual field crops of Prince Edward Island are worth from \$25,000,000 to \$30,000,000. Of late years rapid increase has been made in farm production. This increased production was not brought about by adding any cleared acreage, as in other countries, but by more intensive cultivation. An enormous additional increase is still possible, when the improved system of farming adopted by a few of the more advanced districts is extended over the entire Province. The republic of Salvador has made radio broadcasting a government monopoly and requires licenses for the use of receiving sets.

### Mixed Crops Best Suited

(Continued from page 9)

The land throughout the Province is almost all arable and is easily cultivated. It is naturally drained and is not liable to injury from excessive rains or periods of drouth. For this reason we rarely have a serious crop failure. Conditions are such as to guarantee an annual profitable return to the agriculturist who adopts mixed farming. Many varieties of fruits flourish in the Province. Apples especially can be grown in abundance, and are of good quality. We have no extremes of heat or cold. The temperature rarely goes above 75 degrees in midsummer or below zero in winter. An advantageous point in connection with our isolation as an island is that crime is of rare occurrence. The Sabbath Day observance customary throughout the Province has been noted with approval by visitors, especially those coming from larger centres, who find here the peace and quiet so necessary to an enjoyable summer holiday. With over eighty per cent. of our population engaged in agricultural pursuits, we have the largest percentage of actual producers of wealth of any Province in Canada. For this reason we are never subject to shut-outs or close-downs due to industrial troubles. The earnings of our people are more uniform, and our invested per capita wealth is the greatest of any Province in Canada.

### How Hearts Are Cured

(By British United Press)  
BUDAPEST, Sept. 25.—The establishment of mental clinics in which would-be suicides can be treated by psychologists and induced to take a new interest in life is the latest move of the authorities to check the ever growing number of self-murderers in Hungary. Spacious, sunny rooms, tastefully furnished, are provided for the inmates of these clinics, and everything possible is done to make them feel comfortable and happy. Special attention is paid to those cases—and they are many—where a man has lost his employment and finding himself unable to support his family turns to suicide as the only way out of his trouble. There is a full investigation into the man's circumstances, and an attempt is made to find a position for him and give him a new start in life. Some of the women who are sent to the clinics are victims of an unfortunate love affair, and these are given special treatment by women psychologists. The mental clinics are known as "Life Defence Institutes." They have libraries, small cinemas, and an orchestra plays cheerful music every evening. The inmates are known as "guests" and are allowed to take their meals in their own rooms if they desire. Usually one week's treatment is sufficient to effect a complete cure. Hypnotism is sometimes used in order to induce a sane and healthy outlook on life and games and outdoor sports are encouraged. Although Turkey has an area of about 280,000 square miles only three of its cities have electric power systems of considerable size. A sanitary device has been invented to dispense a small amount of shaving cream on a barber's brush without the bristles being touched. Scientific tests have shown that concrete or brick roads subject automobile tires to less wear than any other kinds of highways. A collapsible cottage for campers has been invented that is made of about 25 pieces and is fastened together with screws.



INTERIOR OF SAINT DUNSTAIN CATHEDRAL