

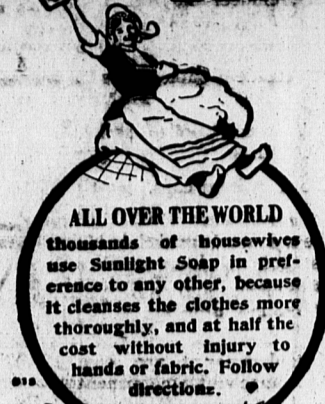
THE KING'S COUNTY GUARDIAN

Office in Montague, Capt. W. A. Johnstone, Agent, and in Souris, A. J. McDonald, Agent.

The latest news, first of all.

Yesterday at Murray River before J. H. Redden, Stipendiary Magistrate for Kings County, Malcolm Giles, Montague, was fined one hundred dollars and costs or three months imprisonment for a first offence against the prohibition act.

SUNLIGHT SOAP



ALL OVER THE WORLD thousands of housewives use Sunlight Soap in preference to any other, because it cleanses the clothes more thoroughly, and at half the cost without injury to hands or fabric. Follow directions.

Charlottetown Steam Navigation Company, Limited

Annual General Meeting.

Notice is hereby given that the Annual General Meeting of the Shareholders of the Company will be held at the office of the Company...

G. W. WAKEFORD, Manager

Estate of Joseph Read & Co.

Tenders are hereby called for the said estate of Joseph Read & Co. consisting of real and personal property...

Quantity of coal in sheds, about 1000 tons. Hard Nut Coal at 40 cents per ton. 2000 bushels of oats, price per bushel...

AUCTION

I am instructed by MRS AMANDA TAPER to sell at auction, on the farm of the late Charles Taper...

ON MONDAY

February 28th, 1910

AT ONE O'CLOCK P. M., SHARP

(If stored on March 2nd, at same hour)

STOCK—8 horses, mare 7 years old (McGill), mare 5 yrs old (Barriere), mare 3 yrs old (MacQueen)...

F. H. HORNE, Auctioneer

THE NEIGHBORS OF KING EDWARD

(Continued from page 1.)

One of the King's nearest neighbors is Lord Farquhar, at Castle Rising, which he and Lady Farquhar rent.

He is a man of parts, witty, a clever talker and a good musician; he is fond of early rising and of exercise, and keeps a small organ in the library of his house in Grosvenor Square...

Queen Alexandra often called on her, and one day on arriving in a pony-car she was asked by the butler—a new servant—"What name, please?"

The Queen was, of course, immensely amused at this naive question. Then the story goes that some years ago a party of young people from the Hall, Castle Rising, were walking along the drive toward Hillington...

They saw a carriage approach and conceived the idea of standing in a row to stop it on its way. They accordingly did so, and when it got near they saw the horror that they had barred the passage of no less august a personage than the late Queen Victoria.

Houghton Hall, which belongs to Lord Cholmondeley, the lord great chamberlain in a splendid place, at present rented by Mrs. Lady Stratford and her husband, Mr. Kennard. She is a thrice married peevish...

Another fine place is Holkham, where Lord and Lady Leicester are to receive royal guests during the shooting season. This is a vast Palladian edifice, which stands in a park as flat as a pancake...

Another fine place is Holkham, where Lord and Lady Leicester are to receive royal guests during the shooting season. This is a vast Palladian edifice, which stands in a park as flat as a pancake...

These pills contain no calomel, no dope, they are soothing, healing and stimulating. They do not constipate, they do not grip; they do not weaken; they do not startle the stomach; they do not irritate the bowels...

These pills contain no calomel, no dope, they are soothing, healing and stimulating. They do not constipate, they do not grip; they do not weaken; they do not startle the stomach; they do not irritate the bowels...

These pills contain no calomel, no dope, they are soothing, healing and stimulating. They do not constipate, they do not grip; they do not weaken; they do not startle the stomach; they do not irritate the bowels...

These pills contain no calomel, no dope, they are soothing, healing and stimulating. They do not constipate, they do not grip; they do not weaken; they do not startle the stomach; they do not irritate the bowels...

These pills contain no calomel, no dope, they are soothing, healing and stimulating. They do not constipate, they do not grip; they do not weaken; they do not startle the stomach; they do not irritate the bowels...

These pills contain no calomel, no dope, they are soothing, healing and stimulating. They do not constipate, they do not grip; they do not weaken; they do not startle the stomach; they do not irritate the bowels...

These pills contain no calomel, no dope, they are soothing, healing and stimulating. They do not constipate, they do not grip; they do not weaken; they do not startle the stomach; they do not irritate the bowels...

These pills contain no calomel, no dope, they are soothing, healing and stimulating. They do not constipate, they do not grip; they do not weaken; they do not startle the stomach; they do not irritate the bowels...

These pills contain no calomel, no dope, they are soothing, healing and stimulating. They do not constipate, they do not grip; they do not weaken; they do not startle the stomach; they do not irritate the bowels...

These pills contain no calomel, no dope, they are soothing, healing and stimulating. They do not constipate, they do not grip; they do not weaken; they do not startle the stomach; they do not irritate the bowels...

These pills contain no calomel, no dope, they are soothing, healing and stimulating. They do not constipate, they do not grip; they do not weaken; they do not startle the stomach; they do not irritate the bowels...

These pills contain no calomel, no dope, they are soothing, healing and stimulating. They do not constipate, they do not grip; they do not weaken; they do not startle the stomach; they do not irritate the bowels...

These pills contain no calomel, no dope, they are soothing, healing and stimulating. They do not constipate, they do not grip; they do not weaken; they do not startle the stomach; they do not irritate the bowels...

These pills contain no calomel, no dope, they are soothing, healing and stimulating. They do not constipate, they do not grip; they do not weaken; they do not startle the stomach; they do not irritate the bowels...



THE "Seal Brand" Trademark guarantees three things—full weight, extra strength and delicious flavor.

And the largest distributors of high-class coffee in the world are behind the "Seal Brand" Trademark.

Ask your grocer for Chase Sanborn's Seal Brand Coffee

Always in 1 and 2 pound sealed tins—never sold in bulk.

CHASE & SANBORN, MONTREAL

magnificence, some fine statuary and a vast library, which contains the most valuable private collection of manuscripts in the kingdom.

Raynham, the old home of Lord Townshend, is now leased by Mr. and Mrs. Neumann, prior to which it was tenanted for several years by Mrs. Lawson Johnstone.

"L. O. A. Boyne Lodge will not meet tonight the hall being engaged."

"Prince Edward Council No. 132 Royal Arcanum will meet this evening at 8 o'clock."

"St. Peter's Choir will meet for practice tonight at 7 sharp. Full attendance is requested."

"Wildy Lodge meets to-night promptly at 8 o'clock. Two candidates for initiation."

"The annual meeting of the New Glasgow Dairy Co. will be held in the New Glasgow Hall on Tuesday next at 2 o'clock."

"Three reels always at New Waverland. The House that ignites, but never imitates. The house which gives the biggest and best show at the lowest price."

"A meeting of the Ladies Aid of the P. E. I. Hospital will be held this morning at eleven o'clock in the Y. M. C. A. All members are requested to attend."

"A meeting of the Directors of the P. E. Island Poultry Association will be held tonight in the office of the President in the Union Bank of Halifax at seven o'clock."

GEO. A. POOLE, Secy, 2-2511tdtufqj Lower Montague.

GRAND TRUNK RAILWAY SYSTEM Low FARES TO PACIFIC COAST POINTS, ETC.

TOURIST SLEEPING CARS Leave Montreal Mondays, Wednesdays and Fridays at 10:30 A. M. for accommodation of passengers holding first or second class tickets to "HAWAIIAN WESTERN" charge is made for berth, which may be temporary.

Dundas Farm For Sale MR. H. L. DUNCAN offers to sell his beautiful farm of 100 acres situate at Dundas, Lot 55 with good buildings, very easy reach of shipping ports, schools, churches, etc. 60 acres clear. Also a lot of Farming implements, sleighs, waggons, horses, sheep, furniture, etc.

MESSRS McLEAN & McKINNON, Attorney-at-law, Charlottetown.

BORN.

McFARLANE—At DeSable, on February 20th, 1910, to J. D. and Mrs. McFarlane, a twelve pound boy. Congratulations.

DIED.

BROWN—At York on Feb. 24, 1910, Joseph S. Brown, aged 40 years. Funeral on Saturday at two o'clock to York Cemetery.

Sir Edward Green, who also has a place in Yorkshire, Houghton Hall, on the sea coast, has been owned by the Le Strange family for countless centuries. It has a glorious old garden, with grass walks, clipped edges and herbaceous borders.

Many stories go the rounds which show the kindly consideration of the King and Queen for their neighbors near Sandringham. On one occasion when Queen Alexandra was driving past the house of a family with whom she had always been on cordial terms she noticed that the flag which usually flew from the tower was now at half-mast.

The Queen, fearing that this might be a sign of trouble, turned aside to make inquiries. On the way to the front door it struck her that if the family had had really bad news it would be better that she should not intrude upon their grief.

Later on the mistress of the house was much astonished to hear that the Queen called at a side entrance to the "quire" all was well, and on being reassured had gone quietly away with neither word nor message.

MARRIAGE OF MISS MATILDA McVITTIE The rectory at Craupud was the scene of a pleasant event when Miss Matilda Matilda, youngest daughter of Robert McVittie, Westmoreland was united in marriage to George Edward McDonald, youngest son of William McDonald of Craupud.

The ceremony after which the young couple drove to the bride's home where a bounteous supper was participated in. This sumptuous feast being over the guests present settled down to a time of enjoyment. Music games and merry chatter were the order of the evening and in the wee small hours the young people left for their homes in Craupud.

The driver and fireman on the train which struck and killed Willie Doyle at the new I. R. C. shops last Thursday afternoon gave evidence at the adjourned coroner's inquest tonight.

At Cumberland, Maryland, the colored servants, as a rule, go to their own homes at night. The cook in the family of the Episcopal clergyman not only does this, but of late has frequently arrived at the rectory too late to cook breakfast. Hence her mistress lately told her that for each breakfast missed there should be a reduction in her weekly wages.

"I get to work when I gets ready," was the reply. "How do you manage 'bout breakfast?" "Oh, I pays de missus to cook de breakfast."

SWELLINGS BRUISES

Swellings, bruises, sprains, cuts, etc., should be immediately treated with Johnson's Anodyne Liniment.

Johnson's ANODYNE Liniment

has been famous as the family emergency remedy for 99 years. It is as effective when taken internally for colds, influenza, asthma, cramps, colic, diarrhoea, etc., as when applied externally.

25 cents and 50 cents a bottle.

I. S. JOHNSON & CO., Boston, Mass.



PARSONS' PILLS are the most effective ever made. Relieve biliousness, constipation and headache.

UNWORTHY FATHER NEGLECTS TWO SMALL CHILDREN IN DEPOT

ST. JOHN, Feb. 23—About 10 o'clock last night two men accompanied by two small children, entered the depot and sat down to await the departure of the Halifax express.

The father, after short conversation, decided to take a walk, leaving his chum in care of the little ones, saying he would return in time for the train.

After the Boston train had arrived and the wanderer had not returned, his chum began to get uneasy, and made up his mind that the other was not going to return.

When the train for the Halifax express was about to depart, all hopes were gone, and picking up the children in his arms he was about to seek a hotel, when the father ran through the door of the depot, and catching one of the children he made a dash to the train.

The father and finest steamship plying between the Maritime Provinces and Boston will leave Yarmouth for Boston, Wed. and Sat. on arrival of train from Halifax. Returning leaves Long Wharf Boston, Tue. and Fri. with express train to and from Halifax and Yarmouth.

RECOMMEND GATE ACROSS TRACK AT NEW I. R. C. SHOPS

Moncton, Feb. 23—The driver and fireman on the train which struck and killed Willie Doyle at the new I. R. C. shops last Thursday afternoon gave evidence at the adjourned coroner's inquest tonight.

At Cumberland, Maryland, the colored servants, as a rule, go to their own homes at night. The cook in the family of the Episcopal clergyman not only does this, but of late has frequently arrived at the rectory too late to cook breakfast.

HER HIRED HELP. (Utica Globe.)

Fairville, Sept. 30, 1902. Dear Sirs,—We wish to inform you that we consider your MINARD'S LINIMENT a very superior article, passively assented to this, but next and we use it as a sure relief for day sore throat and chest.

Yours truly, CHAS. F. TILTON.

Red Rose meeting, Lodge Prince Edward, S. O. E. Feb. 22nd, 1910.

SHINGLES LATHS, PLASTER. Cedar Shingles all grades—Extra Clear, 2nd Clear, Clear White, Extra No 1, No 1 and Quebec Spruce. These shingles were carefully selected by a member of our firm and bought at lowest prices for cash. We can guarantee satisfaction to anyone requiring large or small quantities. Special prices on car lots. Also in stock, Laths, Lime, Rock Wall Plaster, Plaster Paris, Hair, & A full stock of V Sheathing, Flooring, Mouldings, Spouting, Clapboards Doors Sashes, &c. always on hand. A. DUCHEMIN & CO. 2-17rthm2idufqj