

Specials Wednesday Morning FROM 9 TO 1

HALF HOLIDAY WEDNESDAY — requiring a whole day's business between opening time and 1 p.m.

Here are a few attractive items to help boom business for Wednesday from 9 to 1.

**\$2.75 Canton Crepe
Wednesday \$1.59**

3 pieces Canton Crepe, navy, sand and cocoa brown, 39 inches wide, regular \$2.75 yd., Wednesday morning from 9 to 1 **1.59**

**\$3.00 Striped Silk Sport
Skirting \$1.50**

Just two pieces left from a busy season's selling, 40 inches wide, handsome material, come early Wednesday and get it at **1.50**

1 piece Trafalgar Crepe Satin Jade Green only, a lovely fabric selling regularly at \$4.00 Wednesday morning **2.00**

1 piece Canton Crepe, Egyptian Red, all silk, regular \$4.25 per yard, Wednesday morning **2.13**

Fifty four inch ALL WOOL TWEED, five pieces, assorted prices, \$1.75, \$2.00, \$2.50, \$3.50, all nice attractive fabrics. Wednesday morning per yard **1.00**

Plain Dress Linen \$1.00

Much wanted Fabrics, which have come in and are offered you now. Honey Dew, Green, Rose, Tan and White.

This lovely fabric is very popular and very attractive **\$1**

Plain and figured Crepe, 29 inches wide **25c**

Fancy Voiles and Ratines, WHOLESALE PRICES.

**Pleated Skirts of Wool Crepe
\$3.75**

Here's a really remarkable value—separate skirts—the last word in style, very smartly made, shown in black, navy, sand, grey and light grey **3.75**

**MOORE & McLEOD
LIMITED
Charlottetown**

Tingley Monument Works

120 Longworth Avenue

*Manufacturers of Monuments, Tablets, Slabs, and Markers in the best Canadian, American, Scotch and Swedish Granites of Black, Grey or Red.

Cemetery Letters Promptly and Neatly Done.

OUR WORK IS GUARANTEED

Write for Prices and Designs or Phone and our Car Will Call.

E. R. Brow

146 Richmond Street
Charlottetown

Fire, Life, Accident, Sickness and Plate Glass Insurance at Lowest rate.

Agent at Summerside, Lloyd Lewis, Good Strong Stock Companies.

Western Guardian

—SHOP from Holman's Catalog.

—LADIES' COTTON UNDER VESTS only 19c each on Dollar Days at Sinclair's. 3490 7 15 21

—MISSES SPORT COATS sizes 16 and 18 for \$5.00 each at Sinclair's. 3490 15 21

—ROCKFAST DRILL SHIRT—ING 27c per yard on Dollar Days at Sinclair's. 3490 7 15 21

—STEEL CLAD GALATEA 27c per yard on Dollar Days at Sinclair's. 3490 7 15 21

—WOMEN'S SUITS (last seasons) clearing \$5.00 each on Dollar Days at Sinclair's. 3490 7 15 21

—FANCY VOILE waists clearing 75c each on Dollar Days at Sinclair's. 3490 7 15 21

—LADIES' PATENT and Combination Leather Strapped Slip pers \$1.95 a pair on Dollar Days at Sinclair's. 3490 7 15 21

—YOUNG MEN'S All Wool Tweed Suits, new model \$27.50 and \$29.00 values selling on Dollar Days \$22.75 at Sinclair's. 3490 7 15 21

—10 DOZEN MEN'S WORK SHIRTS in khaki, black and white drill, and blue Hickory Cloth, worth \$1.25 selling on Dollar Days 98c each at Sinclair's. 3490 7 15 21

—THURSDAY, FRIDAY and Saturday, July 17th, 18th and 19th Three Big Dollar Days for Summerside. Special bargains in all departments. You are invited. —Sinclair & Stewart, Ltd. 3490 7 15 21

—FINE LECTURE. — On July 9th, Mr. Hammond J. Ince of Victoria, delivered a most interesting lecture, entitled "The Great North Country" before a highly appreciated audience in Bradbane Hall. Mr. Ince, who spent over a quarter of a century in the Northwest, held the interest of his audience as only a man who fully knows his subject can. In the course of his lecture he spoke on many subjects including, a perilous passage in the Behring sea, where for forty days the ship on which he was a passenger was buffeted among the ice floes, the Eskimos, Salt Lake City, Nome, Alaska, an encounter with a cyclone, and other subjects of equal interest. Rev. John Sterling occupied the chair in his usual capable manner, after brief remarks of appreciation by Rev. Mr. Rand, Mr. Hugh McLure, Mr. J. J. Graham and the chairman, a hearty vote of thanks was unanimously accorded to Mr. Ince and all expressed the wish of hearing him again in the near future.

—DRY WEATHER—The weather is very dry. No rain for more than a fortnight now and yet it is wonderful how well the crops are looking along the light sandy loam soils of the North Side. Pastures and old meadow appear to be suffering as all crops must if copious rains don't fall very soon.

—NOTICE—Any parties having young bulls running at large are notified that after this date they will be dealt with according to law. Signed, Premier Institute, Heatherdale. 3075 7 14 31

—REMEMBER THE "OLD HOME" Tea at Souris on July 16th. Trains from Charlottetown and Elmira, both held until 5.30 p. m. Special music and attractions. See posters for particulars. 3133-7-1-121

—"COME TO THE "HOCKDULA" in Montague rink, Friday evening, July 18, 6 o'clock. Athletic sports, wonderful ten shows musical program, ice cream, strawberries, party sale. "The Hit of the season." 3523-7-16-21

—ATTENDING CAMP.—Those going from Montague to the Tuxis Camp at Waterside, are Gordon Coffin, Claude Ives, Russel Kaye, Milton Mellish, Harold Mellish and Fred Norton.

—GROWTH FROM THE SEA.—The Shore field crops are the best so far. Those fields undoubtedly get the needed moisture from the sea as happened in 1920.

—ATTENDING CAMP.—Those going from Montague to the Tuxis Camp at Waterside, are Gordon Coffin, Claude Ives, Russel Kaye, Milton Mellish, Harold Mellish and Fred Norton.

—ATTENDING CAMP.—Those going from Montague to the Tuxis Camp at Waterside, are Gordon Coffin, Claude Ives, Russel Kaye, Milton Mellish, Harold Mellish and Fred Norton.

—ATTENDING CAMP.—Those going from Montague to the Tuxis Camp at Waterside, are Gordon Coffin, Claude Ives, Russel Kaye, Milton Mellish, Harold Mellish and Fred Norton.

—ATTENDING CAMP.—Those going from Montague to the Tuxis Camp at Waterside, are Gordon Coffin, Claude Ives, Russel Kaye, Milton Mellish, Harold Mellish and Fred Norton.

—ATTENDING CAMP.—Those going from Montague to the Tuxis Camp at Waterside, are Gordon Coffin, Claude Ives, Russel Kaye, Milton Mellish, Harold Mellish and Fred Norton.

—ATTENDING CAMP.—Those going from Montague to the Tuxis Camp at Waterside, are Gordon Coffin, Claude Ives, Russel Kaye, Milton Mellish, Harold Mellish and Fred Norton.

—ATTENDING CAMP.—Those going from Montague to the Tuxis Camp at Waterside, are Gordon Coffin, Claude Ives, Russel Kaye, Milton Mellish, Harold Mellish and Fred Norton.

—ATTENDING CAMP.—Those going from Montague to the Tuxis Camp at Waterside, are Gordon Coffin, Claude Ives, Russel Kaye, Milton Mellish, Harold Mellish and Fred Norton.

—ATTENDING CAMP.—Those going from Montague to the Tuxis Camp at Waterside, are Gordon Coffin, Claude Ives, Russel Kaye, Milton Mellish, Harold Mellish and Fred Norton.

—ATTENDING CAMP.—Those going from Montague to the Tuxis Camp at Waterside, are Gordon Coffin, Claude Ives, Russel Kaye, Milton Mellish, Harold Mellish and Fred Norton.

—ATTENDING CAMP.—Those going from Montague to the Tuxis Camp at Waterside, are Gordon Coffin, Claude Ives, Russel Kaye, Milton Mellish, Harold Mellish and Fred Norton.

—ATTENDING CAMP.—Those going from Montague to the Tuxis Camp at Waterside, are Gordon Coffin, Claude Ives, Russel Kaye, Milton Mellish, Harold Mellish and Fred Norton.

—ATTENDING CAMP.—Those going from Montague to the Tuxis Camp at Waterside, are Gordon Coffin, Claude Ives, Russel Kaye, Milton Mellish, Harold Mellish and Fred Norton.

—ATTENDING CAMP.—Those going from Montague to the Tuxis Camp at Waterside, are Gordon Coffin, Claude Ives, Russel Kaye, Milton Mellish, Harold Mellish and Fred Norton.

—ATTENDING CAMP.—Those going from Montague to the Tuxis Camp at Waterside, are Gordon Coffin, Claude Ives, Russel Kaye, Milton Mellish, Harold Mellish and Fred Norton.

—ATTENDING CAMP.—Those going from Montague to the Tuxis Camp at Waterside, are Gordon Coffin, Claude Ives, Russel Kaye, Milton Mellish, Harold Mellish and Fred Norton.

—ATTENDING CAMP.—Those going from Montague to the Tuxis Camp at Waterside, are Gordon Coffin, Claude Ives, Russel Kaye, Milton Mellish, Harold Mellish and Fred Norton.

—ATTENDING CAMP.—Those going from Montague to the Tuxis Camp at Waterside, are Gordon Coffin, Claude Ives, Russel Kaye, Milton Mellish, Harold Mellish and Fred Norton.

—ATTENDING CAMP.—Those going from Montague to the Tuxis Camp at Waterside, are Gordon Coffin, Claude Ives, Russel Kaye, Milton Mellish, Harold Mellish and Fred Norton.

—ATTENDING CAMP.—Those going from Montague to the Tuxis Camp at Waterside, are Gordon Coffin, Claude Ives, Russel Kaye, Milton Mellish, Harold Mellish and Fred Norton.

—ATTENDING CAMP.—Those going from Montague to the Tuxis Camp at Waterside, are Gordon Coffin, Claude Ives, Russel Kaye, Milton Mellish, Harold Mellish and Fred Norton.

—ATTENDING CAMP.—Those going from Montague to the Tuxis Camp at Waterside, are Gordon Coffin, Claude Ives, Russel Kaye, Milton Mellish, Harold Mellish and Fred Norton.

—ATTENDING CAMP.—Those going from Montague to the Tuxis Camp at Waterside, are Gordon Coffin, Claude Ives, Russel Kaye, Milton Mellish, Harold Mellish and Fred Norton.

—ATTENDING CAMP.—Those going from Montague to the Tuxis Camp at Waterside, are Gordon Coffin, Claude Ives, Russel Kaye, Milton Mellish, Harold Mellish and Fred Norton.

—ATTENDING CAMP.—Those going from Montague to the Tuxis Camp at Waterside, are Gordon Coffin, Claude Ives, Russel Kaye, Milton Mellish, Harold Mellish and Fred Norton.

—ATTENDING CAMP.—Those going from Montague to the Tuxis Camp at Waterside, are Gordon Coffin, Claude Ives, Russel Kaye, Milton Mellish, Harold Mellish and Fred Norton.

—ATTENDING CAMP.—Those going from Montague to the Tuxis Camp at Waterside, are Gordon Coffin, Claude Ives, Russel Kaye, Milton Mellish, Harold Mellish and Fred Norton.

—ATTENDING CAMP.—Those going from Montague to the Tuxis Camp at Waterside, are Gordon Coffin, Claude Ives, Russel Kaye, Milton Mellish, Harold Mellish and Fred Norton.

—ATTENDING CAMP.—Those going from Montague to the Tuxis Camp at Waterside, are Gordon Coffin, Claude Ives, Russel Kaye, Milton Mellish, Harold Mellish and Fred Norton.

—ATTENDING CAMP.—Those going from Montague to the Tuxis Camp at Waterside, are Gordon Coffin, Claude Ives, Russel Kaye, Milton Mellish, Harold Mellish and Fred Norton.

—ATTENDING CAMP.—Those going from Montague to the Tuxis Camp at Waterside, are Gordon Coffin, Claude Ives, Russel Kaye, Milton Mellish, Harold Mellish and Fred Norton.

—ATTENDING CAMP.—Those going from Montague to the Tuxis Camp at Waterside, are Gordon Coffin, Claude Ives, Russel Kaye, Milton Mellish, Harold Mellish and Fred Norton.

—ATTENDING CAMP.—Those going from Montague to the Tuxis Camp at Waterside, are Gordon Coffin, Claude Ives, Russel Kaye, Milton Mellish, Harold Mellish and Fred Norton.

—ATTENDING CAMP.—Those going from Montague to the Tuxis Camp at Waterside, are Gordon Coffin, Claude Ives, Russel Kaye, Milton Mellish, Harold Mellish and Fred Norton.

—ATTENDING CAMP.—Those going from Montague to the Tuxis Camp at Waterside, are Gordon Coffin, Claude Ives, Russel Kaye, Milton Mellish, Harold Mellish and Fred Norton.

—ATTENDING CAMP.—Those going from Montague to the Tuxis Camp at Waterside, are Gordon Coffin, Claude Ives, Russel Kaye, Milton Mellish, Harold Mellish and Fred Norton.

—ATTENDING CAMP.—Those going from Montague to the Tuxis Camp at Waterside, are Gordon Coffin, Claude Ives, Russel Kaye, Milton Mellish, Harold Mellish and Fred Norton.

—ATTENDING CAMP.—Those going from Montague to the Tuxis Camp at Waterside, are Gordon Coffin, Claude Ives, Russel Kaye, Milton Mellish, Harold Mellish and Fred Norton.

—ATTENDING CAMP.—Those going from Montague to the Tuxis Camp at Waterside, are Gordon Coffin, Claude Ives, Russel Kaye, Milton Mellish, Harold Mellish and Fred Norton.

—ATTENDING CAMP.—Those going from Montague to the Tuxis Camp at Waterside, are Gordon Coffin, Claude Ives, Russel Kaye, Milton Mellish, Harold Mellish and Fred Norton.

—ATTENDING CAMP.—Those going from Montague to the Tuxis Camp at Waterside, are Gordon Coffin, Claude Ives, Russel Kaye, Milton Mellish, Harold Mellish and Fred Norton.

—ATTENDING CAMP.—Those going from Montague to the Tuxis Camp at Waterside, are Gordon Coffin, Claude Ives, Russel Kaye, Milton Mellish, Harold Mellish and Fred Norton.

—ATTENDING CAMP.—Those going from Montague to the Tuxis Camp at Waterside, are Gordon Coffin, Claude Ives, Russel Kaye, Milton Mellish, Harold Mellish and Fred Norton.

—ATTENDING CAMP.—Those going from Montague to the Tuxis Camp at Waterside, are Gordon Coffin, Claude Ives, Russel Kaye, Milton Mellish, Harold Mellish and Fred Norton.

—ATTENDING CAMP.—Those going from Montague to the Tuxis Camp at Waterside, are Gordon Coffin, Claude Ives, Russel Kaye, Milton Mellish, Harold Mellish and Fred Norton.

—ATTENDING CAMP.—Those going from Montague to the Tuxis Camp at Waterside, are Gordon Coffin, Claude Ives, Russel Kaye, Milton Mellish, Harold Mellish and Fred Norton.

—ATTENDING CAMP.—Those going from Montague to the Tuxis Camp at Waterside, are Gordon Coffin, Claude Ives, Russel Kaye, Milton Mellish, Harold Mellish and Fred Norton.

—ATTENDING CAMP.—Those going from Montague to the Tuxis Camp at Waterside, are Gordon Coffin, Claude Ives, Russel Kaye, Milton Mellish, Harold Mellish and Fred Norton.

—ATTENDING CAMP.—Those going from Montague to the Tuxis Camp at Waterside, are Gordon Coffin, Claude Ives, Russel Kaye, Milton Mellish, Harold Mellish and Fred Norton.

—ATTENDING CAMP.—Those going from Montague to the Tuxis Camp at Waterside, are Gordon Coffin, Claude Ives, Russel Kaye, Milton Mellish, Harold Mellish and Fred Norton.

—ATTENDING CAMP.—Those going from Montague to the Tuxis Camp at Waterside, are Gordon Coffin, Claude Ives, Russel Kaye, Milton Mellish, Harold Mellish and Fred Norton.

—ATTENDING CAMP.—Those going from Montague to the Tuxis Camp at Waterside, are Gordon Coffin, Claude Ives, Russel Kaye, Milton Mellish, Harold Mellish and Fred Norton.

—ATTENDING CAMP.—Those going from Montague to the Tuxis Camp at Waterside, are Gordon Coffin, Claude Ives, Russel Kaye, Milton Mellish, Harold Mellish and Fred Norton.

Eastern Guardian

—SHOP from Holman's Catalog.

—MONTAGUE HORSE RACES Wednesday, August 13th. 3268 7 5 101

—FEW ARRIVALS FROM U. S. A.—Thus far very few of the native boys and girls away, are visiting the old home and friends in Kings County.

—EASTERN AGENT.—Mr. J. W. Murdock is now Guardian Agent in Montague and will be pleased to receive news items, advertising, Job Printing, new and renewal subscriptions.

—GROWTH FROM THE SEA.—The Shore field crops are the best so far. Those fields undoubtedly get the needed moisture from the sea as happened in 1920.

—ATTENDING CAMP.—Those going from Montague to the Tuxis Camp at Waterside, are Gordon Coffin, Claude Ives, Russel Kaye, Milton Mellish, Harold Mellish and Fred Norton.

—ATTENDING CAMP.—Those going from Montague to the Tuxis Camp at Waterside, are Gordon Coffin, Claude Ives, Russel Kaye, Milton Mellish, Harold Mellish and Fred Norton.

—ATTENDING CAMP.—Those going from Montague to the Tuxis Camp at Waterside, are Gordon Coffin, Claude Ives, Russel Kaye, Milton Mellish, Harold Mellish and Fred Norton.

—ATTENDING CAMP.—Those going from Montague to the Tuxis Camp at Waterside, are Gordon Coffin, Claude Ives, Russel Kaye, Milton Mellish, Harold Mellish and Fred Norton.

—ATTENDING CAMP.—Those going from Montague to the Tuxis Camp at Waterside, are Gordon Coffin, Claude Ives, Russel Kaye, Milton Mellish, Harold Mellish and Fred Norton.

—ATTENDING CAMP.—Those going from Montague to the Tuxis Camp at Waterside, are Gordon Coffin, Claude Ives, Russel Kaye, Milton Mellish, Harold Mellish and Fred Norton.

—ATTENDING CAMP.—Those going from Montague to the Tuxis Camp at Waterside, are Gordon Coffin, Claude Ives, Russel Kaye, Milton Mellish, Harold Mellish and Fred Norton.

—ATTENDING CAMP.—Those going from Montague to the Tuxis Camp at Waterside, are Gordon Coffin, Claude Ives, Russel Kaye, Milton Mellish, Harold Mellish and Fred Norton.

—ATTENDING CAMP.—Those going from Montague to the Tuxis Camp at Waterside, are Gordon Coffin, Claude Ives, Russel Kaye, Milton Mellish, Harold Mellish and Fred Norton.

—ATTENDING CAMP.—Those going from Montague to the Tuxis Camp at Waterside, are Gordon Coffin, Claude Ives, Russel Kaye, Milton Mellish, Harold Mellish and Fred Norton.

—ATTENDING CAMP.—Those going from Montague to the Tuxis Camp at Waterside, are Gordon Coffin, Claude Ives, Russel Kaye, Milton Mellish, Harold Mellish and Fred Norton.

—ATTENDING CAMP.—Those going from Montague to the Tuxis Camp at Waterside, are Gordon Coffin, Claude Ives, Russel Kaye, Milton Mellish, Harold Mellish and Fred Norton.

—ATTENDING CAMP.—Those going from Montague to the Tuxis Camp at Waterside, are Gordon Coffin, Claude Ives, Russel Kaye, Milton Mellish, Harold Mellish and Fred Norton.

—ATTENDING CAMP.—Those going from Montague to the Tuxis Camp at Waterside, are Gordon Coffin, Claude Ives, Russel Kaye, Milton Mellish, Harold Mellish and Fred Norton.

—ATTENDING CAMP.—Those going from Montague to the Tuxis Camp at Waterside, are Gordon Coffin, Claude Ives, Russel Kaye, Milton Mellish, Harold Mellish and Fred Norton.

—ATTENDING CAMP.—Those going from Montague to the Tuxis Camp at Waterside, are Gordon Coffin, Claude Ives, Russel Kaye, Milton Mellish, Harold Mellish and Fred Norton.

—ATTENDING CAMP.—Those going from Montague to the Tuxis Camp at Waterside, are Gordon Coffin, Claude Ives, Russel Kaye, Milton Mellish, Harold Mellish and Fred Norton.

—ATTENDING CAMP.—Those going from Montague to the Tuxis Camp at Waterside, are Gordon Coffin, Claude Ives, Russel Kaye, Milton Mellish, Harold Mellish and Fred Norton.

—ATTENDING CAMP.—Those going from Montague to the Tuxis Camp at Waterside, are Gordon Coffin, Claude Ives, Russel Kaye, Milton Mellish, Harold Mellish and Fred Norton.

—ATTENDING CAMP.—Those going from Montague to the Tuxis Camp at Waterside, are Gordon Coffin, Claude Ives, Russel Kaye, Milton Mellish, Harold Mellish and Fred Norton.

—ATTENDING CAMP.—Those going from Montague to the Tuxis Camp at Waterside, are Gordon Coffin, Claude Ives, Russel Kaye, Milton Mellish, Harold Mellish and Fred Norton.

—ATTENDING CAMP.—Those going from Montague to the Tuxis Camp at Waterside, are Gordon Coffin, Claude Ives, Russel Kaye, Milton Mellish, Harold Mellish and Fred Norton.

—ATTENDING CAMP.—Those going from Montague to the Tuxis Camp at Waterside, are Gordon Coffin, Claude Ives, Russel Kaye, Milton Mellish, Harold Mellish and Fred Norton.

—ATTENDING CAMP.—Those going from Montague to the Tuxis Camp at Waterside, are Gordon Coffin, Claude Ives, Russel Kaye, Milton Mellish, Harold Mellish and Fred Norton.

—ATTENDING CAMP.—Those going from Montague to the Tuxis Camp at Waterside, are Gordon Coffin, Claude Ives, Russel Kaye, Milton Mellish, Harold Mellish and Fred Norton.

—ATTENDING CAMP.—Those going from Montague to the Tuxis Camp at Waterside, are Gordon Coffin, Claude Ives, Russel Kaye, Milton Mellish, Harold Mellish and Fred Norton.

—ATTENDING CAMP.—Those going from Montague to the Tuxis Camp at Waterside, are Gordon Coffin, Claude Ives, Russel Kaye, Milton Mellish, Harold Mellish and Fred Norton.

—ATTENDING CAMP.—Those going from Montague to the Tuxis Camp at Waterside, are Gordon Coffin, Claude Ives, Russel Kaye, Milton Mellish, Harold Mellish and Fred Norton.

—ATTENDING CAMP.—Those going from Montague to the Tuxis Camp at Waterside, are Gordon Coffin, Claude Ives, Russel Kaye, Milton Mellish, Harold Mellish and Fred Norton.

—ATTENDING CAMP.—Those going from Montague to the Tuxis Camp at Waterside, are Gordon Coffin, Claude Ives, Russel Kaye, Milton Mellish, Harold Mellish and Fred Norton.

—ATTENDING CAMP.—Those going from Montague to the Tuxis Camp at Waterside, are Gordon Coffin, Claude Ives, Russel Kaye, Milton Mellish, Harold Mellish and Fred Norton.

—ATTENDING CAMP.—Those going from Montague to the Tuxis Camp at Waterside, are Gordon Coffin, Claude Ives, Russel Kaye, Milton Mellish, Harold Mellish and Fred Norton.

—ATTENDING CAMP.—Those going from Montague to the Tuxis Camp at Waterside, are Gordon Coffin, Claude Ives, Russel Kaye, Milton Mellish, Harold Mellish and Fred Norton.

—ATTENDING CAMP.—Those going from Montague to the Tuxis Camp at Waterside, are Gordon Coffin, Claude Ives, Russel Kaye, Milton Mellish, Harold Mellish and Fred Norton.

—ATTENDING CAMP.—Those going from Montague to the Tuxis Camp at Waterside, are Gordon Coffin, Claude Ives, Russel Kaye, Milton Mellish, Harold Mellish and Fred Norton.

—ATTENDING CAMP.—Those going from Montague to the Tuxis Camp at Waterside, are Gordon Coffin, Claude Ives, Russel Kaye, Milton Mellish, Harold Mellish and Fred Norton.

—ATTENDING CAMP.—Those going from Montague to the Tuxis Camp at Waterside, are Gordon Coffin, Claude Ives, Russel Kaye, Milton Mellish, Harold Mellish and Fred Norton.

—ATTENDING CAMP.—Those going from Montague to the Tuxis Camp at Waterside, are Gordon Coffin, Claude Ives, Russel Kaye, Milton Mellish, Harold Mellish and Fred Norton.

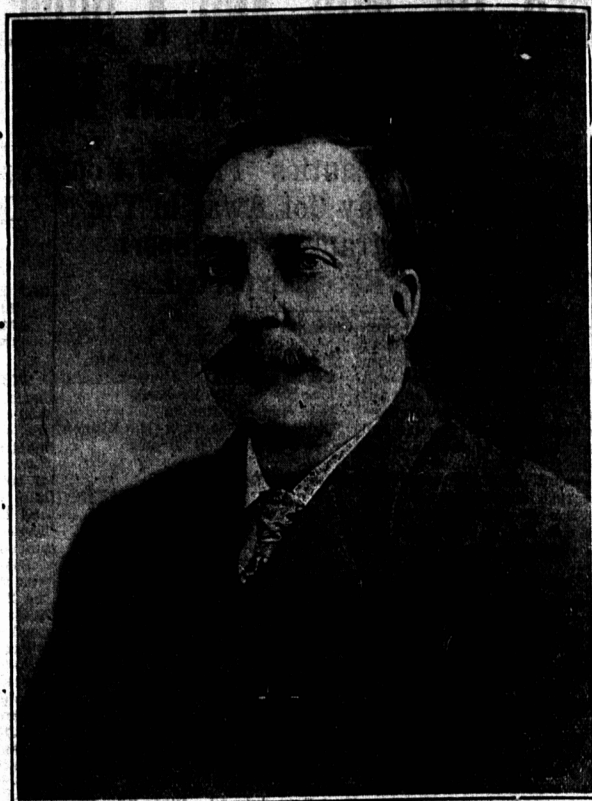
—ATTENDING CAMP.—Those going from Montague to the Tuxis Camp at Waterside, are Gordon Coffin, Claude Ives, Russel Kaye, Milton Mellish, Harold Mellish and Fred Norton.

—ATTENDING CAMP.—Those going from Montague to the Tuxis Camp at Waterside, are Gordon Coffin, Claude Ives, Russel Kaye, Milton Mellish, Harold Mellish and Fred Norton.

CARNIVAL WEEK AT THE BIG STORE

Prowse Bros Limited

Extends a Royal Welcome to all visitors both from Home and Abroad to Our City



I personally wish to meet all old friends from Home and Abroad who are visiting our City during Carnival Week. Come in and let us shake hands. L. E. PROWSE.

We also extend an invitation to all to visit OUR STORE where you will find the largest assortment of Ladies Ready-to-Wear, Dress Goods, Hosiery and Silks, Millinery, Cotton and Linen Staples, Men's and Boy's Ready made Clothing, Gent's Furnishings, Hats and Caps, Carpets, Oilcloths and Linoleums

AT LOWEST PRICES

You will find Specials in every Department which will greatly repay you for your visit to the BIG STORE, during CARNIVAL WEEK. We carry the largest stock on P. E. Island of everything in wearing apparel except boots that a man, woman or child wears. We also carry oversizes in every Department both for men and women.

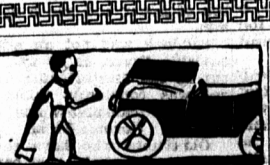
OUR MOTTO

Quick Sales. Small Profits. Let us prove our assertions by patronizing us Carnival Week.

With every purchase of \$5.00 and over we will give a free ticket to the Charlottetown Horse Races which will be held Wednesday Afternoon, July 16.

PROWSE BROS LIMITED

The One Price Cash Store



Hotel Arrivals

RUSS HOTEL
Mrs. H. H. Cox, Morell; Mrs. J. Y. McGregor, Morell; Lydia McMillan, New Glasgow, N. S.; Dolly McMillan, New Glasgow; Mr. and Mrs. C. H. Weeks, Alberton; Dr. and Mrs. E. E. Sinclair, Rev. G. S. and Mrs. Mitchell, Summerside; W. H. Shepherd, Toronto; Audrienne Perry, Muriel Lee, Mrs. J. S. Perry, Summerside; Mrs. Don Baker, Summerside; Mr. and Mrs. P. O. D. Steven, Peel Street, Mrs. W. A. Steven, Montreal; Evelyn Sinclair, Betty Sinclair, Margaret Sinclair, Master Neil Sinclair, Summerside; Miss Jean Sinclair, Toronto; Mrs. H. W. McDonald, Toronto; Mr. and Mrs. L. M. McKinnon, Montague; Mrs. Nellie Fraser, Montague; Eugene Martin, Mrs. Eugene Martin, Quebec; Donald Sinclair, Mrs. N. R. Sinclair, Toronto; A. E. Armstrong, Toronto; Mr. and Mrs. J. D. McLaren, Moncton; Mr. and Mrs. D. A. McNeill and Child, Moncton; Mr. and Mrs. E. H. Banner and child, Moncton; Mr. and Mrs. Munroe Bruce, field; Olga, Eric and L. K. Kinnon, Montague; Mr. and Mrs. A. Rowland, Montreal; Mrs. J. Radford, Moncton; Mrs. A. M. Robey, Moncton.

same except that the circulation is assisted by the means of a rotary pump placed in line in the system, travelling in the direction to draw the cold water from the bottom of the cylinders and radiator to the top.

QUEST.—Will you please explain how dimmers work in a Car, and how I can make my lamps brighter when on dim?

W. G. S., Summerside.

ANS.—The method of brightening lamps is as follows:—Remove lighting switch when there will be seen at the back a coil of wire about an inch long. Cut off about a quarter of this wire and connect the lead again to the screw. This wire acts as resistance to the current.