

Make Paving Budgets Produce More MILEAGE

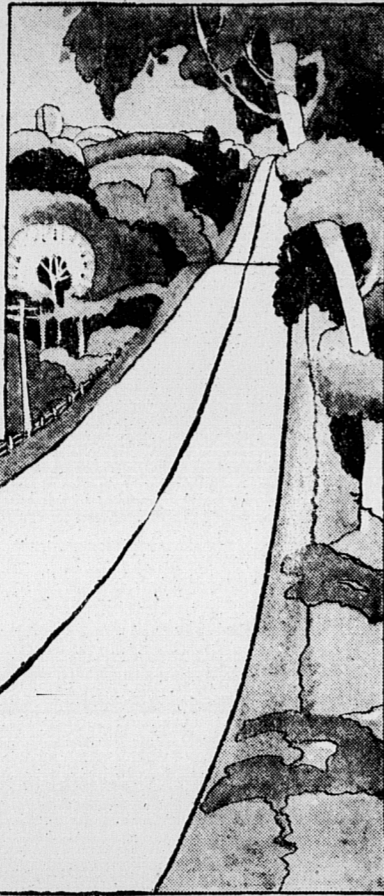
Your community can afford just so much for paving. How much NEW MILEAGE results each year depends on the material used.

Concrete, by practically eliminating upkeep, makes budgets produce more NEW MILEAGE. Sums usually spent for maintenance, refinishing, replacements, are released for the major appropriation purpose.

Advocate concrete in your community for productive and economical road-budgeting, for safer driving, for reduced wear and tear on tires and cars, for lessened gas consumption and as an attraction to profitable tourist traffic.

Canada Cement Company Limited
Canada Cement Company Building
Phillips Square Montreal
Sales Offices at:
Montreal Toronto Winnipeg Calgary

CANADA CEMENT CONCRETE FOR PERMANENCE



Typical Ontario Concrete Highway

PERMANENT CONCRETE HIGHWAYS

Imperial Fox Food FOR PUPPIES

The success following the use, during the past four years, of Imperial Puppy Food, has clearly proven the merits of this Imperial product to our experienced ranchers and they are planning on feeding liberally this season.

Our formula is specially suited to the needs of the young and growing foxes, is rich in vitamins, and a sure preventative of rickets.

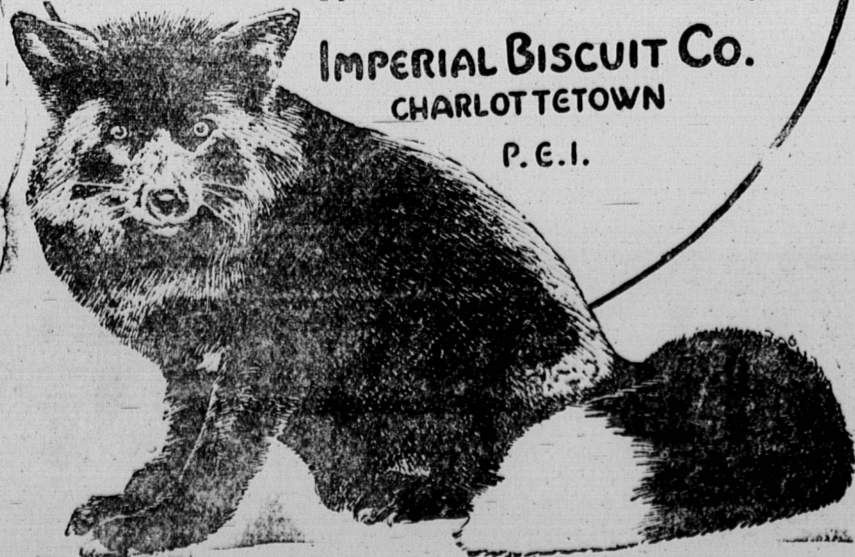
Our Puppy Food is guaranteed to be strictly fresh, and can be purchased either finely or coarsely ground to meet feeding requirements.

Order early so as to be sure of receiving your supply in good time as heavy demands are anticipated.

HAUCK FIRE GUNS

We have the agency for the Hauck Fire Gun endorsed by leading ranchers for disinfecting pens and houses. Full information on request.

IMPERIAL BISCUIT CO.
CHARLOTTETOWN
P. E. I.



Bean Planting Time Is Here

Give the beans the warmest, best-drained soil in the garden. They will be much safer in this soil medium than in a heavy wet soil, especially in the early plantings which are very likely to encounter some cool weather before they get well into their stride.

The green podded string beans are now popular. A generation ago the wax bean was the popular sort and green beans were seldom seen. This was due to the fact that the wax beans seemed to have less string than the green ones and the string was easier to remove. With the development of the stringless green pod, which is really stringless, wax beans have lost out. They deserve wider culture as they have a slightly different flavor from the green pods and are an excellent vegetable by way of variety, even if the color is the chief difference.

There is no difference in the hardness or ease of growth. The wax bean has one advantage. The beans appear plainly visible to the naked eye and tell the gardener when there are beans to pick while he must look more closely at the green pods to find out whether the crop is ready. There are now stringless wax types as devoid of fibre as the better-known stringless green pod types.

There are such a number of varieties of each type it is difficult to make a selection. Any of them are good provided they are of the modern stringless type. Standard are the Stringless Green Pod and the Stringless Wax.

Royal Families Of The Garden Nasturtiums

The nasturtium, botanically a tropaeolum, occupies a position as the single occupant of its family in the garden and a most popular one it is. Favorite for many years, it still remains one of the finest annuals that can be grown for a wealth of attractive foliage and attractive bloom. The nasturtium besides has the advantage of a spicy fragrance.

For edging or for beds the dwarf types are ideal. They give flowers with fine stems for bowls or low vases in a great variety of colorings, from velvety blackish crimson to creamy white, and in all manner of yellow and orange shades and a series of brilliant reds. Then, too, there are the variegated types.

The tall nasturtium, sometimes called a climber, which it really isn't, as it has no means of getting up in the world without artificial help, is one of the finest of materials to cover stumps, rocks, low fences or other low objects over which the long trailing stems can push their way. It is really a trailer and will push its way up any slanting support it encounters but it has no tendrils or rootlets with which to attach itself, nor has it a twining stem.

There is the same range of color in the climbers as in the dwarfs. There are dark-leaved and low-leaved varieties to give foliage effects.

The nasturtium is of the easiest culture. The one fact to be considered is that it should not have too rich soil. It is a better bloomer in rather poor soil. Rich fare sends it to a great development of leaves at the expense of blossoms.

The seeds should be planted half an inch deep where the plant is to remain. It is tender to frost so there should be no hurry to plant the seed until the weather is fairly settled. It revels in heat and withstands drought better than many annuals but benefits by moisture in continued dry spells. You can't go wrong on a bed or edging of marigolds for brilliant display and fine cutting materials. The climbing type makes an excellent subject to trail from window or porch boxes.

SEE JERSEY CATTLE LEAVE FOR CANADA

LONDON, May 15.—A large party of representatives of British newspapers and press agencies will arrive

SPINNING AND WEAVING

Send me your wool to be spun into yarn or wove into blankets the charge for spinning single yarn is 25 cents per pound and doubled 28 cents. Spinning and weaving a blanket \$2.25. Blankets are (white only) and all wool 72 x 90 inches unwashed wool must be washed clean and all burs and dirt picked out. Send by mail or freight. Freight will be paid on shipments of 100 lbs. Be shippers name on all parcels and owners name, address and instructions inside, otherwise I will not be responsible for losses. The size of single yarn is medium and doubled yarn, fine, medium and coarse.

WM. LANDRIGAN
SOURIS, P. E. I.



No! it won't pump beans...

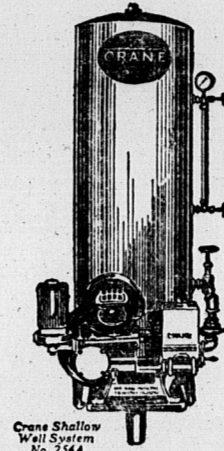
... but an occasional sprinkling from a hose will often save a garden in times of drought.

A Crane Water System pays for itself in one year—gives you better, healthier stock, cleaner, more sanitary conditions; saves time and effort; improves the health and disposition of everybody on the farm.

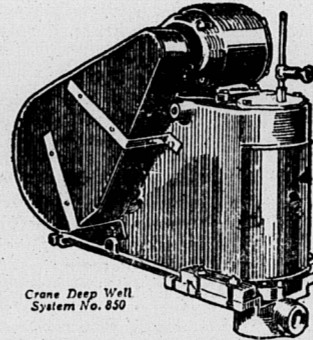
In all the years to follow it gives back its original purchase price over and over again. The cost of upkeep is practically nothing.

Ask freely for any information you desire.

Price \$100.00 and up



Crane Shallow Well System No. 254A



Crane Deep Well System No. 850

Have you enquired about the Crane budget plan, spreading payments over a period of months?

CRANE

566 Main Street, Moncton, N. B.

here tomorrow. They will write up what they find of interest in the historic Channel Islands and doubtless will be specially interested in the exodus of the finest specimens of Jersey's famous cattle to Canada.

The purchase by B. H. Bull and Son, Brampton, Ontario, of the herd of John Perres, leading breeder on the island, is the biggest deal ever known here. One of the bulls has already been sold for \$25,000 and three cows have fetched \$12,000. There were sixteen bulls and 103 cows in the herd purchased by Messrs. Bull.

SOLDIER SETTLERS DO BETTER IN NEW ZEALAND THAN CANADA

TORONTO, May 15.—Canadian farmers are putting too many eggs in the wheat basket, according to Sir Richard Winfrey, prominent English agriculturist, who is in Toronto today on his way to Ottawa.

Sir Richard is returning by way of Canada from New Zealand where, as a member of the Empire Farmers' party, he has been making a six weeks' tour of the islands on the invitation of the New Zealand Farmers' Union.

Both from his practical experience in England and what he has seen in New Zealand, Sir Richard believes Canada's agricultural success in the future is bound up in mixed farming. "The chances taken in growing only wheat are too great," he declared.

During the last two years of the war Sir Richard was Parliamentary secretary to the Minister of Agriculture, and he has had a great deal to do with the placing of returned soldiers on the land. Ten years ago he made a four months' tour of Canada studying the work done by the Federal Returned Soldiers' Settlement Board.

On his present trip Sir Richard has re-visited some of the ex-service men's settlements that were being opened up when he was here in 1920. In the majority of cases he has found the men still on their holdings and doing well.

Do Better in New Zealand "But I also find," he stated, "that a larger percentage of soldier settlers have made good in New Zealand than in Canada, I think it may be because climate conditions are better there."

In his trip across the Dominion Sir Richard said he had visited some of the 3,000 families that had been placed on Canadian lands. He had found on the whole that they were making satisfactory progress, particularly where they were grouped together.

"I believe English immigrants should always be settled in groups," he concluded. "People set off by themselves in a strange land amongst strange people are likely to become lonely and morbid. I suspect that

English families that have failed in Canada are the ones which have been isolated."

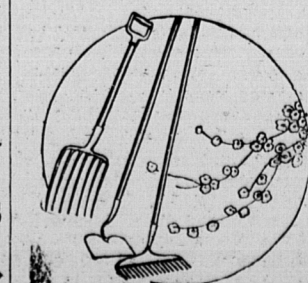
"FARMERS" WOOL IS VERY LOW

Ship us all your washed wool to be manufactured into yarn, selling the finished article and thereby increase your profits.

Our charges are as follows: Carding 8 cents per pound, carding and spinning single yarn 25 cents per pound, doubling and twisting 3 cents extra, coloring 10 cents per pound extra. We pay freight both ways on shipments of 100 lbs. or over, and guarantee satisfaction. Will be pleased to forward sample card and shipping tags on request.

F. H. COFF WOOLEN MILL, Fort Elgin, N. B.

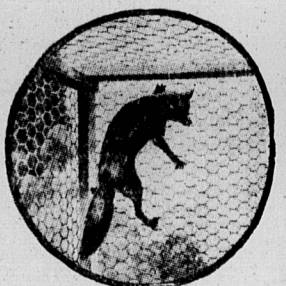
5-15-31.



GARDEN IMPLEMENTS

Brighten up your lawn and garden! The right implements will make the work easy and pleasant. Rakes, hoes, shovels, shrubbery trimmers — every needed implement is here, priced surprisingly low and guaranteed to give you the satisfactory service you have every right to expect.

The Rogers Hardware Co., Limited



"PEERLESS" Brand Fox Netting

Foxes are valuable, and in order to insure their proper protection you should have the best therefore you should have "PEERLESS" the best English Fox Netting on the market.

Heavily galvanized before and after being woven, it will not rust. If any roll does not open up to your satisfaction, RETURN THE ROLL, we will gladly replace it or refund your money.

We also carry a complete line of Fox Pens, Staples, Lacing Wire, Nails, Hinges, Fox Tongs, etc.

The Rogers Hardware Company Limited

FOR SALE SEED POTATOES
Spaulding Rose
Irish Cobblers
Green Mountains
At our Warehouse, Hogan's Wharf.
Phone 1179
J. LESTER DOUGLAS
Charlottetown, P. E. I.

C. M. Lampson & Co., LIMITED,
64 Queen Street
London, E. C. 4, England
Public Auction Sales OF RAW FURS
Shipping bags will be furnished without charge by applying to R. T. Holman, Ltd., Summerside, P. E. I.
represented by
Alfred Fraser, Inc.
212 Fifth Avenue
New York, N. Y.