

Government-Municipal-Corporation Securities
BOUGHT - SOLD - QUOTED
F. J. BRENNAN & CO. LTD.
Members Investment Dealers Association of Canada
E. M. BAGNALL—Manager
142 Richmond St. Charlottetown Telephone 1470
Saint John — Moncton — Fredericton — Halifax — Sydney

Produce
MONTREAL, Feb. 4—(CP)—Produce prices quoted here today were reported by the Dominion Department of Agriculture as follows:
Eggs: Free cases, A large 44-44 1/2; med 41-42; A pullets 37 1/2-38; B 38-39; C 32-34.
Butter: Current receipts Quebec no 1 pasteurized 67 3/4; no 2 66 3/4; wholesale Quebec no 1 pasteurized fresh and storage 68 1/2-69.
Cheese: Current receipts western white 32 1/2; western colored 32 1/2 (ob); wholesale eastern white 33; western colored 34. No other prices established.
Potatoes: Quebec no 1 75 lbs new 1.30-1.35; NB no 1 75 lbs 1.40-1.45; PEI no 1 75 lbs 1.50-1.55.
YOU NEVER KNOW
Oysters are duo-sexed and may change their sex from time to time.

PROFESSIONAL CARDS

MORRELL AND COMPANY
CHARTERED ACCOUNTANTS
Eastern Trust Building
Charlottetown Phone 1447 Box 344

Dr. A. L. MacIsaac
DENTIST
Dental X-Ray
Wheaton Building, Room 4
175 Grafton Street
Phone 291

Dr. J. C. Gallant, B. Sc.
DENTIST
Pickard Building
151 Great George St.
DENTAL X-RAY
Phone 2867

J. A. McGuigan
NOTARY, ETC.
BARRISTER, SOLICITOR, OR
CURRIE BUILDING
P. A. HASLAM, B.A., LL.B.
Barrister, Etc.
Bank of Nova Scotia Chambers
Charlottetown, P.E.I.
MONEY TO LOAN

Chas. R. McQuaid
B.A.
BARRISTER, SOLICITOR,
NOTARY, ETC.
Eastern Trust Building
CHARLOTTETOWN
Phone 711

Bell & Mathieson
BARRISTERS, SOLICITORS, &
E. B. BELL, M.L.
D. L. MATHIESON, LL.B., E.C.
Attorneys at Law
LOANS ON CITY AND FARM
PROPERTIES
150 Richmond St.,
Charlottetown, P.E.I.

Joseph R. MacMillan, LL.B.
BARRISTER, SOLICITOR, ETC.
75 Queen Street
PHONE 776

Matheson & Peake
A. W. MATHESON, K.L.
A. H. PEAKE, B.A., LL.B.
Barristers, etc.
Collections - Money to Loan
90 Great George Street
Charlottetown

H. R. DOANE and COMPANY
CHARTERED ACCOUNTANTS
IN CHARLOTTETOWN
58 Grafton St.
Phone 2880 Box 247
BANDOLPH V. MANNING,
C. A.

COMPLETE INSURANCE SERVICE
W. K. Rogers Agencies
LIMITED
Green Street
Charlottetown

Mining

(Canadian Press)
TORONTO, Feb. 4—

Sales Stock	Close
2000 Akaicho	75
4000 Anacon	50
3900 Anglo Cdn	49
2000 Arlon	11
2800 Ati Oil	70
2000 Aubelle	10
15300 Aumque	30
100 Anunor	350
2500 Bagamac	24
110 Bk of Mont	26
30 Bk of Tor	36
14100 Base Met	57
525 Bralorne	330
300 Brand Mill	30
2500 Brit Dom	94
1500 Buffad	21
500 Buff Ank	255
950 Cal Edm	585
2700 Campbell	300
535 Din Brew	20-1/2
550 Cas Treth	30
4125 Cent Led	127
1900 Cent Pat	142
11000 Cent Por	19-1/2
1000 Chem Res	55
1600 Chesterville	275
140 Chrom	170
1100 Cochenour	235
1500 Colomac	65-3/4
15500 Con Astoria	32-1/2
1500 Con Beattie	57
17700 Con Home	33
1745 Con Smelt	112
100 Convest	128
9900 Delnite	130
4500 Denison	08-1/2
1000 Delta	11
2500 Dexter Rl	52
5500 Dickenson	54
7700 Discovery	30
8800 Div Int	21
695 Dome	17-1/4
30 Din Bk	25-1/4
2000 Donalds	23-1/2
33500 Dulama	2-1/2
8000 Duvay	13
2800 E Mal	229
300 E Sullivan	295
10700 El Sol	32-3/4
350 Falcon	11-1/4
200 Frobrisher	415
420 Giant	575
3700 Globe	66
1600 Gods Lake	45
3000 Gold Star	11
600 Gold Mat	11
12950 Goldhawk	11-1/2
75500 Goldora	07-1/2
2500 Goldvue	08-1/2
4900 Gulf Lead	51
2100 Gunner	09
5500 Harker	09
14100 Hasaga	60
2500 Heva Gm	11-1/2
3500 Highbridge	08
535 Hollinger	11-7/8
7100 Hosco	1-1/2
775 Hud Bay	51
460 Imp Bk	28-3/4
430 Int Nickel	34
2500 Joliet	43-1/2
1765 Kerr Add	15
18500 Kirk Gold	08
2900 Kirk Hud	52
3610 Kirk Lake	52
600 Labrador	175
13500 Laguerre	05
3000 L Duffut	124
1395 Lake Shore	3-8
3500 L Wasa	45
27849 Lebel	04-7/8
3000 Louvicourt	39
700 Macassa	240
1600 Macdonald	29-1/2
4000 Macfie	56-1/2
1700 MacLeod	112
3000 Madsen	284
2700 Mal Gf	224
4500 Martin	05-7/8
3000 McDoug	13
100 McIntyre	14-1/2
2000 McLellan	07
300 Min Corp	11
4650 Negus	245
320 New Bid	06
3750 New Marl	19-1/2
2000 Newnorth	1-7/8
25500 New Norz	11
5300 New Cal	264
4150 New Pac	11-3/4
4500 Nib	06
3350 Nicholson	07
285 Noranda	1-1/2
9115 Normetal	325
12500 Norpik	10-1/2
3000 Norseman	09
1500 North Inca	38
1500 North Can	38
1200 O'Brien	175
1925 Okalta	134
12500 Oranada	16
4600 Osisko	88
4840 Pac Pest	261
8225 Pan West	130
4500 Pan West	130
2000 Paymaster	39
7500 Pen Rey	10
1150 Pickle Crow	220
3000 Preston	152
1000 Purdy	07-1/2
17700 Que Lab	06-1/2
2600 Que Man	91
2000 Queenston	56
385 Queenont	16
100 Renoble	240
500 Rochette	13
825 Royal B	25-1/4
120 Royalite	28
3000 Roybar	09
5000 Rupinuni	09
3700 Senar	445
2600 Senator	44
500 Sheep Cr	150
5250 Sherritt	221
100 Sigma	785
17000 Silanco	55
2570 Siscoe	36
2850 South Braz	29-1/2
1200 Spring	135
6700 Starrat	73
2600 Steep Ro	155
800 Sullivan	167
1250 Sylvanite	145
2830 Teck Hu	275
9000 Thom Lund	14
1200 Torbit	101
1600 Trae Res	69-1/2
5000 Union Min	11-1/2
3500 Un Keno	260
600 Up Can	175
635 Waite	12-3/4
3900 Wiltsey	24-1/2
1300 Wingait	08
650 Wright Har	228

Oil And Steel Stocks

Oil and Steel Stocks
Lead Retreat At N.Y.
NEW YORK, Feb. 4—(AP)—The stock market took one of the worst poundings of the year today. Sixty-one stocks sold at the lowest prices in more than a year.
Oil and steel stocks paved the way for the retreat, but were soon joined by other groups.
Volume expanded a bit and sales reached 1,060,000 shares, a high since Jan. 7. This compared with 770,000 yesterday.
Trading broadened to include 1,025 stocks also tops since Jan. 7.
Immediate cause for the decline appeared to be the news that Creole Petroleum, almost wholly owned by Standard Oil (NJ) had reduced its quarterly dividend.
The Associated Press average of 60 stocks dropped .5 of one point to 64.8. The largest decline since a 1.1 point loss on Jan. 3. The general level of prices is now back where it was on Jan. 5.

At Toronto

TORONTO, Feb. 4—(CP)—Golds were down on the Toronto Stock Exchange today but key issues pulled up to hold steady with yesterday. Base metals were steady in dull action and western oils were in an almost one-way downward movement.
Senior golds led an early decline and then tightened to pull some issues into higher ground. Dome and Lake Shore were ahead fractions. Gains and losses were about balanced in a wide list of juniors.
Consolidated Smelters climbed 1-1/8 to 112 in base metals while Wattle Amulet, International Nickel, Normetal and Golden Manitou weakened. Pend Oreille added 10 cents and New Calumet was ahead

New York Exchange

Anacanda	33
Am Car and F	30-1/4
Beth Steel	31-1/2
N Y Central	31-3/4
Ches Ohio	32-3/4
Con Edison	23
Elce Auto Lite	40
Gen Elec	37-3/4
Gen Motors	61
GT Nor Pfd	40-1/4
Sid Oil NJ	68-1/8
Kennecott	49
Mont Ward	54-1/2
North Am	17-1/4
Phi Pete	52-1/4
U S Rubber	40-5/8
Radio Corp	12-1/4
Texas Corp	50
United Air	23-1/8
Van Air	21-3/4
West Elec	24-1/8
West Union	15
U S Steel	73-1/2

BANKS

Commerce	23
Montreal	25-3/4
Nova Scotia	35-1/4
Royal Bank	25-1/4

Montreal Exchange

Asbestos	25-1/4
Abitibi	16
B A Oil	23-7/8
Build Prod	31-7/8
Bruick Silk	15-3/4
Bell Tel	39-3/8
Can Brew	29-1/2
Bathurst	22
Can Cement	25-3/4
Can Pacific	15-5/8

BEWARE THE COMMON COLD

1. Avoid crowds and persons who are ill during the "cold" season.
2. Avoid overheated rooms, too much clothing and sudden changes of temperature.
3. Keep up body resistance by a well balanced diet and enough sleep.
4. Stay at home with a cold and keep the germs from spreading.
5. Be examined by your doctor if you have frequent colds.
6. Always cough and sneeze into a handkerchief. Use and burn paper tissues when you have a cold.
7. Cod Liver Oil helps to prevent colds. Children from birth to sixteen years should take it daily all the year round.

HEALTH DIVISION.

Milk Producers, Vendors Meeting

A meeting of the Milk Producers and Vendors' Association to study the Milk Act and other important questions to come up at meeting, to be held at Birch Court, Experimental Farm Tuesday evening, Feb. 8, at 8 o'clock.
Signed, PERCY GAY
Sec'y. for Milk Producers and Vendors Ass'n.

CLOSED FOR STOCK TAKING

Our Store will close at 12 o'clock
MONDAY, FEBRUARY 7TH
For balance of day for stock taking.
RIX'S GROCETERIA

Oil And Steel Stocks

Oil and Steel Stocks
Lead Retreat At N.Y.
NEW YORK, Feb. 4—(AP)—The stock market took one of the worst poundings of the year today. Sixty-one stocks sold at the lowest prices in more than a year.
Oil and steel stocks paved the way for the retreat, but were soon joined by other groups.
Volume expanded a bit and sales reached 1,060,000 shares, a high since Jan. 7. This compared with 770,000 yesterday.
Trading broadened to include 1,025 stocks also tops since Jan. 7.
Immediate cause for the decline appeared to be the news that Creole Petroleum, almost wholly owned by Standard Oil (NJ) had reduced its quarterly dividend.
The Associated Press average of 60 stocks dropped .5 of one point to 64.8. The largest decline since a 1.1 point loss on Jan. 3. The general level of prices is now back where it was on Jan. 5.

At Montreal

MONTREAL, Feb. 4—(CP)—Losses were in the majority during dull trading on the Montreal Stock Exchange and Curb Market today.
Changes generally were minor although a few selected industrials were spotty. Mines moved slowly in a steady market.
Papers led the downswing in a broad list while base metals tended to continue an upward trek started at the close of Thursday's trading.
Consolidated Smelters continued on the uptrend, adding a further point at 111 1/2. Aluminum was up 3-8 at 58, but Noranda and Hudson Bay Mining dipped 1-2 each, the latter touching a new low of 50 1/2. International Nickel remained unchanged at 34.
Sole ground grain in papers was M. and O., up 1-4 at 20 3/4. Price was shaded at a new low of 53.
Consolidated Smelters continued on the uptrend, adding a further point at 111 1/2. Aluminum was up 3-8 at 58, but Noranda and Hudson Bay Mining dipped 1-2 each, the latter touching a new low of 50 1/2. International Nickel remained unchanged at 34.
Sole ground grain in papers was M. and O., up 1-4 at 20 3/4. Price was shaded at a new low of 53.
Consolidated Smelters continued on the uptrend, adding a further point at 111 1/2. Aluminum was up 3-8 at 58, but Noranda and Hudson Bay Mining dipped 1-2 each, the latter touching a new low of 50 1/2. International Nickel remained unchanged at 34.

Farm Market

(Continued from Page 1)
real market. Hogs at Moncton, Grade "A's" 30; B's 29.60. No. 1 sows 21.50, hot dressed weight delivered. Market slow especially for sows.
At Charlottetown Grade "A's" were 29; B's 28.60; sows 20.50 at country points.
A word of explanation might be in order here because there has been some misunderstanding regarding the Moncton price for island hogs. Actually island hogs shipped to Moncton are paid for on the same basis as those going to Charlottetown, that is, a net price in the farmer's yard. We doubt if farmers were paid the delivered price and deductions made for loading, bedding, insurance, local fees, freight, etc., that is per pound would hardly cover it. However, this is usually the difference. The reason for quoting the delivered price at Moncton is that Nova Scotia and New Brunswick hogs are paid for on a delivered basis and the Marketing section of the Maritime Co-operative Services who handle the majority of the hogs in those two provinces deduct from the delivered price these expenses before payments are made.
Cattle prices this week were: choice steers and heifers 18; good 17; medium 16; plain and common dairy steers down to 10c. Best cows 14; good 13.50; common 12; cutters and canners 11. Good choice veal 18; common and medium 12 "A" grade lambs are rail grade, delivered, 43c. Sheep good heavies 55; culls 53. Rail grade for "A's" sheep 15. Those cattle and calf prices are f.o.b. country points. Others are delivered.
Summarizing this livestock report, we might say that both the marketings and prices for hogs are down this week but the demand for good cattle is still keen. Prices are steady and there seems to be a steady movement.

Lambs and Sheep

Although nothing definite has been accomplished yet, negotiations are under way to improve our lamb marketing system for next year. Now is the time to treat all sheep with the penicillin treatment and do it again no closer than one month before lambing. Two treatments of this are necessary and will go a long way towards eliminating those light and unthrifty lambs in the summer and fall. Another point that might be of interest to the swine breeders is that rape seed may be scarce this coming spring and those planning on it should secure their supplies as soon as possible. Farmers have found it a wonderful supplement for hogs during the summer and also for finishing lambs when the pasture goes dry and poor in late summer.
Present prices on young pigs seem to be holding steady. There are very few moving but the reported current price is \$24-\$26 per pair for 30 lb. pigs. Apparently most swine breeders are holding their young pigs at the present time.
There is little or no change in the dairy situation on the island. Butter production at the present time is running around 45,000 lbs. a week. This is an increase of approximately 50% over the same period last year. Butter consumption in the Province at the present time is taking care of the current manufacture. It seems to be supplying all our local markets but with little or none left for export. Prices are at ceiling, wholesale 69%, and the jobbing price 71% delivered to the retail outlets. There is no cheese being manufactured or moving from producer to dealer.
Feed prices are showing a weakness this week. Barley has eased at some points as much as 10-12c per cwt. Oats is reported down 4c-6c. There is considerable wheat coming in and some corn. We have been quoting carlot prices delivered in ton lots at the present time. Wholesale ton lots in Charlottetown are selling at: wheat \$75-\$77; oats \$55-\$57; barley meal, that is Western No. 1 feed barley, ground on the island \$54-\$55 per round. Corn is going for \$3.40 round of bag at the car. Ground Protein feeds are still very scarce and still high. Bran this week is up a little and selling at \$55 per ton. Shorts is about the same price.

Shipping News

AT SAINT JOHN—
Arrived Friday
Bris from Cardiff
Manchester Division, London
Akti, Australian ports
Prins Willem Van Orange, Halifax.
Sailed Friday
None
Due Saturday
Norwegian, from Bristol channel ports.
AT HALIFAX—
Arrived Friday
Flying Independent, from New York
Ascania, Liverpool
Imperial Halifax, Buren, Nfld.
La Grande Hermine, Sydney, N.S.
Sailed Friday
Alcoa Planter, for Bermuda
Due Sunday
Newfoundland, from Liverpool
Due Monday
Canadian Cruiser, from West Indies.

Early Chick Hatch

Delivery Made In Heated Panel Truck
The first sizable hatch of the season was successfully delivered yesterday, when 2,000 mixed New Hampshire Red chicks were moved from Dillon and Spillet's Hatcheries in Charlottetown to Preston I. Wood's poultry farm at Southport. The delivery was made in a heated panel truck and, in spite of the cold weather, no chicks were lost.
On arrival, the chicks spread out into the sun which was streaming into the well-insulated two-story building and stayed away from the brooders until later in the afternoon. Delivery of another 2,000 on Monday next will complete the order.
Mr. Wood plans to fill the building with 2,000 pullets by July 1. The remainder will be caponized within 5 or 6 weeks and it is expected that they will find a market in the U.S. At present, about 1,100 White Leghorns occupy the lower floor. These are producing 800 eggs daily, and the Provincial Sanatorium is supplied from the Wood's farm. Mr. Wood says that the White Leghorns' eggs are very popular with the customers and are "hard to beat."
Two weeks earlier than last year and with a better demand to date, the Island Chick Hatchery expected to ship 3,000 chicks on Monday, February 7. Fifteen hundred of these will be New Hampshire mixed, and will go to Mr. J. D. MacDonald, Glenfinnan, and the other 1,500 to Mr. Lloyd Molyneux, Cross Roads. The latter hatch will be in two lots. New Hampshire crossed with Barred Rocks and a Light Sussex-New Hampshire cross.
An order for 15,000 mixed New Hampshire from Swift's Chick Hatchery for Wheatley Bros. West Reginald, will start to move on February 14, when the first hatch of between 5 and 6 thousand will be delivered.

Dairying

There is little or no change in the dairy situation on the island. Butter production at the present time is running around 45,000 lbs. a week. This is an increase of approximately 50% over the same period last year. Butter consumption in the Province at the present time is taking care of the current manufacture. It seems to be supplying all our local markets but with little or none left for export. Prices are at ceiling, wholesale 69%, and the jobbing price 71% delivered to the retail outlets. There is no cheese being manufactured or moving from producer to dealer.
Feed prices are showing a weakness this week. Barley has eased at some points as much as 10-12c per cwt. Oats is reported down 4c-6c. There is considerable wheat coming in and some corn. We have been quoting carlot prices delivered in ton lots at the present time. Wholesale ton lots in Charlottetown are selling at: wheat \$75-\$77; oats \$55-\$57; barley meal, that is Western No. 1 feed barley, ground on the island \$54-\$55 per round. Corn is going for \$3.40 round of bag at the car. Ground Protein feeds are still very scarce and still high. Bran this week is up a little and selling at \$55 per ton. Shorts is about the same price.

Feedstuffs

Feed prices are showing a weakness this week. Barley has eased at some points as much as 10-12c per cwt. Oats is reported down 4c-6c. There is considerable wheat coming in and some corn. We have been quoting carlot prices delivered in ton lots at the present time. Wholesale ton lots in Charlottetown are selling at: wheat \$75-\$77; oats \$55-\$57; barley meal, that is Western No. 1 feed barley, ground on the island \$54-\$55 per round. Corn is going for \$3.40 round of bag at the car. Ground Protein feeds are still very scarce and still high. Bran this week is up a little and selling at \$55 per ton. Shorts is about the same price.

Potatoes

Potato prices have been up and down a bit during the past week but they seem to have levelled off again. The demand for seed has been steady during the last couple of days. Tablestock is easier but there is some movement. Prices at Island points this week starting at the East are:
Elmire - Tablestock 70c per bushel at car. Not much movement.
Katahdin seed is going at Eastern stations for 85c-90c per bushel at car.
At Morell, St. Peter's, Montague, and Murray River there is little or no tablestock moving. Seed and "Foundation A" at Morell and St. Peter's are moving at 85c-90c per bushel at the car.
At Montague and Murray River there were three or four cars loaded at 80c last week.
Vernon River quots seed at 80c per bushel at the farm. Seed is 90c per bushel with a fair movement.
Charlottetown - Cobble seed No. 1's 85c-90c. No. 2's 55c-60c. Fair demand. Katahdin No. 1 and No. 2, 85c-90c. Fair movement. Sebago and Mountains 80c. No. 2 Mountains 55c-60c. Demand slow. Charlottetown prices are delivered at car. Tablestock at Charlottetown is quoted at 85c per 75 lb. bag.
On the Borden line dealers are quoting \$1.40 per cwt. for Katahdin and Mountain seed at the farm. Demand is strong. Tablestock price is 90c at the farm. Movement slower.
At Kensington seed is 80c per bushel. Tablestock 80c-85c per 75 lb. bag at warehouse.
Summerside - Seed also 80c per bushel for "Certified", \$1.00 for "Foundation". No. 2 Mountains and Cobblers 60c; No. 2 Katahdin and Sebagoes 75c-80c. Movement quiet in tablestock but demand for seed is good.
Wellington - Tablestock is going around 90c per bushel delivered. Little seed moving at the moment.
O'Leary - Prices are about the same as at Wellington.
The turnip prices are about steady with last week. Reports from Eastern indicate a steady demand at 80c-90c per bushel for Island turnips. Prices at Island points are 30c-32c at the farm in the Vernon area and at Charlottetown 32c at the car. Prices at Milton and Colville are 20c at the farm, and 32c at the car.

COMES CLEAN!

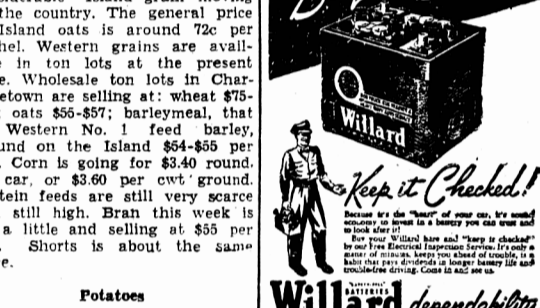


Yes, Bras d'Or is the coal that comes clean because it is OIL-TREATED and that does away with dust on your drapes and rust on your stoker.
It's graded, too, in sizes that give you MORE HEAT at less cost... so get Bras d'Or, the finest, fastest selling stoker coal on the market.

BRAS D'OR COAL CO. LTD.

Miners of High Grade Bituminous Coal
BRAS D'OR NOVA SCOTIA

Buy the Best...



Willard dependability

Batt & MacRae

171 Grafton St. - Phone 437
Very Liberal Allowance on Old Batteries.

Refrigeration