

Expensive Moths

Experience has probably already taught you how expensive it may be to have moths in the house. Don't let them feed on your furs and valuable garments this year. Use one of our reliable moth preventers such as

- Moth Balls
- Gum Camphor
- Cedar Flakes
- Lavender Flakes
- Naphtha Flakes
- Moth Proof Bags

as you need not worry about these pests.

J. G. Jamieson
Druggist

Black Fox Jewelry

We have a large variety in brooches, stick pins, fobs, rings etc.

If you have not already seen this line, call in and we will be pleased to show them to you.

G. H. Taylor
Jeweler & Optician



Montague Black Fox Exchange
Correspondence Solicited
L. M. McKinnon, Manager
Montague P. E. I.

N. C. CHRISTIE

Amherst Nova Scotia
Breeder and Dealer in Highest Grade Pedigreed Black Silver Foxes and all other Fur Bearing Animals. Correspondence solicited.
1105-2-7m6mos

DEATHS

ACORN. At Mermaid May 10th, Katherine L. McDonald, wife of Wm. L. Acorn aged 38 years. Funeral from the residence of her father, Wm. McDonald, Mermaid, tomorrow, May 12th at 2 p. m. Interment at Mermaid Cemetery.

IN MEMORIAM

There departed this life on March the 16th, 1914, Annie Heffell at the advanced age of eighty years. She was formerly a resident of Travellers Rest but during the past few years she lived with her nephew Mr. William Heffell of Cape Traverse, where she won the esteem and respect of the community by her quiet and unassuming manner and Christian character. In a home noted for its kindness she was tenderly cared for until the final call came, when in the full assurance of faith, she passed away to her glorious home above. She was for many years a valued and consistent member of the Presbyterian Church and interment was made in the Presbyterian Cemetery at North Bedouque. The service was conducted by Rev. Jas. MacDougall, Minister of the Church of Scotland, who spoke words of comfort to the bereaved and of exhortation to the large number who had assembled to pay the last tribute of respect to the departed.

PILES

Do not suffer another day of itching, bleeding, or protruding piles. No surgical operation required. Dr. Chase's Ointment will relieve you at once and as certainly as you can. Do a box at once, or call on Dr. Chase & Co., Limited, Toronto. Sample box free if you mention this paper and enclose 10c stamp to pay postage.

THE GUARDIAN

Advertising Phone... 113-3
Subscription Phone... 113-2
News and Edit. Day Phone... 113-1
News and Edit. Night Phone... 113-1

Head Office at Charlottetown, Branch Offices at Summerside, Alberton, Souris and Montague.

TUESDAY, MAY 12TH, 1914.

DIARY OF EVENTS

TODAY.

City Magistrate's Court, 9 a. m.
P. E. I. Presbytery meeting, St. James, 10 a. m.
Supreme Court, 11 a. m.
Prince Edward Theatre, 7.15 and 9 p. m.
People's Theatre, 7.30 and 9 p. m.
P. E. I. Hospital Nurses Graduation, Zion Church hall, 8 p. m.

RECOURSE to the classified advertising columns constitutes your best RESOURSE when some little emergency greets you.

OUR COUNTRY

It is well, occasionally, to take a survey of our own country and its resources. In studying the greatness of the older countries, a greatness that is the result of centuries of development and struggle, a greatness that has become interwoven with the world's history, we are apt to forget the growing greatness of our own young Canada. We have a magnificent country, magnificent in its size, in its developed and undeveloped resources, its limitless wealth of sea and forest and soil and mine. An occasional glance at these will give us a better conception of the country than we live in and will give us abundant reason for that patriotism which we preach on stated occasions and which, unfortunately, we are so prone to forget in actual practice.

Perhaps the most striking definition of the physical greatness of Canada was that given by the Right Honorable R. L. Borden. He said, "If you could pivot Canada upon its eastern seaboard, it would cover the northern part of the Atlantic Ocean, the British Islands, Norway, Sweden, Denmark, Holland, Belgium, the northern part of France, the entire German Empire and a considerable part of European Russia. Halifax is a thousand miles farther from Victoria, B. C., than it is from London, England."

Canada is larger than the United States including Alaska, by 111,992 square miles. It is thirty times as large as Germany and almost as large as the whole continent of Europe. It has 13,000 miles of coast line. The boundary line between Canada and the United States is 3,000 miles long. So much for its size.

Of this vast area only 35,375,000 acres were under field crops in 1913 and the value of the whole product was \$522,771,500. Its wheat production is increasing more rapidly than its population. In 1871 it was less than five bushels per head; in 1881, eight; in 1891, nine; in 1901, eleven and in 1912, twenty-seven. Surely this is a record and a promise. In addition to this also, there is the fact that Canada produces the best wheat in the world, proof of which was given by the winning of the first prize for best bushel of hard wheat and seven out of sixteen sweepstakes at the International Dry Farming Congress at Oklahoma in 1913 in competition with thirty states and provinces.

Canada's population per square mile is 1.93; Great Britain 471; Germany 310; France 196; United States 25. This gives an idea of the possibilities yet in store for Canada and the room there is for further development.

The mineral production of Canada in 1912 amounted to \$135,048,294; her forest products to \$161,802,049; her total trade to \$1,085,264,449. She has 29,304 miles of railway which earn \$256,702,703 and her government revenue is \$168,689,903.

Canada now ranks fourth in world production of oats, namely, 335,341,000 bushels in 1913, those ahead of her in this class being United States, Russia and Prussia.

Canada has the most extensive and best stocked commercial fishing waters in the world, her fishing area including 5000 miles of Atlantic, 7000 miles of Pacific Coast and 220,000 square miles of fresh water. Her fisheries in 1912 were valued at \$34,667,872.

With such resources as these and many others that might be named Canada is at the beginning of a development that in a very few years will rival any country in the world. For such a country it is worth while working, such a country is worth while keeping clean and wholesome in its youth, politically, socially, commercially.

JUDGE McDONALD

In the death of His Honor Hector C. McDonald, Judge of the County Court of Queen's County, briefly recorded in yesterday's Guardian, the province has lost one of its sterling public men. The late Mr. McDonald was born in Belfast on May 3, 1856 and had, therefore, just passed his 58th birthday. After graduating from McGill University with the degree of Bachelor of Arts and Bachelor of Civil Law, he entered the law office of Messrs. McLean and Martin and was admitted to the bar in 1886. Shortly afterwards he became a partner in this firm and practised his profession with marked ability. In 1888 he was elected to represent his native district in the Provincial Legislature and became Attorney-General and a member of the Executive Council in 1897. He represented the Belfast district for ten years and during his term of office applied himself studiously and successfully in the interests of his constituents and his province. In 1889 he was appointed County Court Judge for Queen's County, a position which he held until his death. He was a prominent Mason, a member of St. John's Lodge, A.F. and A. M. and was successively exalted to the Royal Arch, Knighted by Prince Edward Preceptory and made a Thirty Second Degree Mason in the A. and A. S. Rite. He was also a charter member of Prince Edward Lodge No. 1, Knights of Pythias. Among his brethren he was accounted worthy of all honor; as a citizen he was public spirited and charitable, as a friend, sincere, kindly, honorable. He leaves to mourn two brothers, John and S. M., in Vancouver, B.C.; six sisters, Mrs. Kingsbury, Mrs. Malcolm, Mrs. A. M. McKenzie, Flat River; Mrs. A. M. Stewart, Belle River; Mrs. John McDonald, Flat River; Mrs. A. C. Buchanan, and Mrs. A. D. Ross, Eldon. To the bereaved who are left to mourn a deservedly beloved brother we tender sincere sympathy.

A VISIT TO CARLETON POINT

By our Special Commissioner
Once more the eyes of the province turned toward Carleton Point, the terminus of the Prince Edward Island Car ferry. The operations suspended last autumn are being resumed and already there is considerable activity in the neighborhood. A representative of The Guardian last Saturday and had the pleasure of getting an idea of the immense project involved. Last week Mr. Thomas Barrett, Manager for the contractors, Messrs. Roger Miller & Co., arrived to take charge of the work. There had already been on the scene Messrs. F. Frapp, Government Engineer in charge of the construction work and Assistant Engineer Mr. H. M. Downing. Two comfortable buildings were erected this spring one for the engineers and one for the manager, each building being used as an office and lodging. A commodious ice house was also erected in which some 500 tons of ice is stored for the coming summer.

Mr. Barrett is at present engaged in the erection of summer camps or shacks, in which the men will be lodged and boarded. He will also commence at once the erection of two immense towers between which will be swung the cables for transferring the stone from the quarry at Shediac, N. B., have been completed and the contractors' large tug, "Gravel" with two large scows are either on the way or have arrived at Tormentine and it is expected will begin work within the next few days. The contractors hope to have the landing slip ready before winter sets in.

It will be remembered that the Car ferry steamer, which is being built in England is to be launched in June and delivered during the present summer. Operations on the spur line connecting the main line of railway with the terminus, on which considerable grading and levelling was done before winter set in, will also be resumed as soon as the land is dry enough, probably within a week or so, so that very shortly Carleton Point will be one of the busiest spots in the province.

The spur line, although originally laid off with a width of 75 feet, has been widened to 100 feet. The track will be laid with standard gauge sleepers, but the rails will first be laid narrow gauge in order to afford connection with the rest of the system during the construction of the terminals, after which the whole system will be standardized. In the meantime the bridges, cattle guards &c., will be built standard width. There are on the ground now 24 steel cattle guards of standard width.

Carleton Point is a peninsular area jutting out nearly half a mile from the general coast line and varying in width from about 500 yards at its widest to 200 yards at its narrowest part. The Car ferry will be built part on the south side of this peninsula, about midway between the general coast line and the outer point, and will be 2,200 feet long. At a distance of 500 feet from the end of the pier a breakwater 800 feet long will be built as a protection to the pier. The basin formed by the pier and breakwater will constitute the harbor and will have a depth of 22 feet at low water. An examination of the records on file in the Registry Office at Summerside shows that the government has secured 47.11 acres of land on the point and immediate vicinity, which will be laid out into railway yards and on which the railway buildings will be erected. The extent of yard room and general accommodation provided will give an idea of the greatness of the undertaking contemplated.

THE TOWN SITE
Of the land secured by the Government, 8 1/2 acres were purchased from streets.

THE TERMINALS
Carleton Point is a peninsular area jutting out nearly half a mile from the general coast line and varying in width from about 500 yards at its widest to 200 yards at its narrowest part. The Car ferry will be built part on the south side of this peninsula, about midway between the general coast line and the outer point, and will be 2,200 feet long. At a distance of 500 feet from the end of the pier a breakwater 800 feet long will be built as a protection to the pier. The basin formed by the pier and breakwater will constitute the harbor and will have a depth of 22 feet at low water. An examination of the records on file in the Registry Office at Summerside shows that the government has secured 47.11 acres of land on the point and immediate vicinity, which will be laid out into railway yards and on which the railway buildings will be erected. The extent of yard room and general accommodation provided will give an idea of the greatness of the undertaking contemplated.

THE TOWN SITE
Of the land secured by the Government, 8 1/2 acres were purchased from streets.

THE TERMINALS
Carleton Point is a peninsular area jutting out nearly half a mile from the general coast line and varying in width from about 500 yards at its widest to 200 yards at its narrowest part. The Car ferry will be built part on the south side of this peninsula, about midway between the general coast line and the outer point, and will be 2,200 feet long. At a distance of 500 feet from the end of the pier a breakwater 800 feet long will be built as a protection to the pier. The basin formed by the pier and breakwater will constitute the harbor and will have a depth of 22 feet at low water. An examination of the records on file in the Registry Office at Summerside shows that the government has secured 47.11 acres of land on the point and immediate vicinity, which will be laid out into railway yards and on which the railway buildings will be erected. The extent of yard room and general accommodation provided will give an idea of the greatness of the undertaking contemplated.

THE TOWN SITE
Of the land secured by the Government, 8 1/2 acres were purchased from streets.

THE TERMINALS
Carleton Point is a peninsular area jutting out nearly half a mile from the general coast line and varying in width from about 500 yards at its widest to 200 yards at its narrowest part. The Car ferry will be built part on the south side of this peninsula, about midway between the general coast line and the outer point, and will be 2,200 feet long. At a distance of 500 feet from the end of the pier a breakwater 800 feet long will be built as a protection to the pier. The basin formed by the pier and breakwater will constitute the harbor and will have a depth of 22 feet at low water. An examination of the records on file in the Registry Office at Summerside shows that the government has secured 47.11 acres of land on the point and immediate vicinity, which will be laid out into railway yards and on which the railway buildings will be erected. The extent of yard room and general accommodation provided will give an idea of the greatness of the undertaking contemplated.

THE TOWN SITE
Of the land secured by the Government, 8 1/2 acres were purchased from streets.

PREPARATORY WORK

Mr. Barrett is at present engaged in the erection of summer camps or shacks, in which the men will be lodged and boarded. He will also commence at once the erection of two immense towers between which will be swung the cables for transferring the stone from the quarry at Shediac, N. B., have been completed and the contractors' large tug, "Gravel" with two large scows are either on the way or have arrived at Tormentine and it is expected will begin work within the next few days. The contractors hope to have the landing slip ready before winter sets in.

It will be remembered that the Car ferry steamer, which is being built in England is to be launched in June and delivered during the present summer. Operations on the spur line connecting the main line of railway with the terminus, on which considerable grading and levelling was done before winter set in, will also be resumed as soon as the land is dry enough, probably within a week or so, so that very shortly Carleton Point will be one of the busiest spots in the province.

THE TERMINALS

Carleton Point is a peninsular area jutting out nearly half a mile from the general coast line and varying in width from about 500 yards at its widest to 200 yards at its narrowest part. The Car ferry will be built part on the south side of this peninsula, about midway between the general coast line and the outer point, and will be 2,200 feet long. At a distance of 500 feet from the end of the pier a breakwater 800 feet long will be built as a protection to the pier. The basin formed by the pier and breakwater will constitute the harbor and will have a depth of 22 feet at low water. An examination of the records on file in the Registry Office at Summerside shows that the government has secured 47.11 acres of land on the point and immediate vicinity, which will be laid out into railway yards and on which the railway buildings will be erected. The extent of yard room and general accommodation provided will give an idea of the greatness of the undertaking contemplated.

THE TOWN SITE
Of the land secured by the Government, 8 1/2 acres were purchased from streets.

THE TERMINALS
Carleton Point is a peninsular area jutting out nearly half a mile from the general coast line and varying in width from about 500 yards at its widest to 200 yards at its narrowest part. The Car ferry will be built part on the south side of this peninsula, about midway between the general coast line and the outer point, and will be 2,200 feet long. At a distance of 500 feet from the end of the pier a breakwater 800 feet long will be built as a protection to the pier. The basin formed by the pier and breakwater will constitute the harbor and will have a depth of 22 feet at low water. An examination of the records on file in the Registry Office at Summerside shows that the government has secured 47.11 acres of land on the point and immediate vicinity, which will be laid out into railway yards and on which the railway buildings will be erected. The extent of yard room and general accommodation provided will give an idea of the greatness of the undertaking contemplated.

THE TOWN SITE
Of the land secured by the Government, 8 1/2 acres were purchased from streets.

THE TERMINALS
Carleton Point is a peninsular area jutting out nearly half a mile from the general coast line and varying in width from about 500 yards at its widest to 200 yards at its narrowest part. The Car ferry will be built part on the south side of this peninsula, about midway between the general coast line and the outer point, and will be 2,200 feet long. At a distance of 500 feet from the end of the pier a breakwater 800 feet long will be built as a protection to the pier. The basin formed by the pier and breakwater will constitute the harbor and will have a depth of 22 feet at low water. An examination of the records on file in the Registry Office at Summerside shows that the government has secured 47.11 acres of land on the point and immediate vicinity, which will be laid out into railway yards and on which the railway buildings will be erected. The extent of yard room and general accommodation provided will give an idea of the greatness of the undertaking contemplated.

THE TOWN SITE
Of the land secured by the Government, 8 1/2 acres were purchased from streets.

THE TERMINALS
Carleton Point is a peninsular area jutting out nearly half a mile from the general coast line and varying in width from about 500 yards at its widest to 200 yards at its narrowest part. The Car ferry will be built part on the south side of this peninsula, about midway between the general coast line and the outer point, and will be 2,200 feet long. At a distance of 500 feet from the end of the pier a breakwater 800 feet long will be built as a protection to the pier. The basin formed by the pier and breakwater will constitute the harbor and will have a depth of 22 feet at low water. An examination of the records on file in the Registry Office at Summerside shows that the government has secured 47.11 acres of land on the point and immediate vicinity, which will be laid out into railway yards and on which the railway buildings will be erected. The extent of yard room and general accommodation provided will give an idea of the greatness of the undertaking contemplated.

THE TOWN SITE
Of the land secured by the Government, 8 1/2 acres were purchased from streets.

THE TERMINALS
Carleton Point is a peninsular area jutting out nearly half a mile from the general coast line and varying in width from about 500 yards at its widest to 200 yards at its narrowest part. The Car ferry will be built part on the south side of this peninsula, about midway between the general coast line and the outer point, and will be 2,200 feet long. At a distance of 500 feet from the end of the pier a breakwater 800 feet long will be built as a protection to the pier. The basin formed by the pier and breakwater will constitute the harbor and will have a depth of 22 feet at low water. An examination of the records on file in the Registry Office at Summerside shows that the government has secured 47.11 acres of land on the point and immediate vicinity, which will be laid out into railway yards and on which the railway buildings will be erected. The extent of yard room and general accommodation provided will give an idea of the greatness of the undertaking contemplated.

THE TOWN SITE
Of the land secured by the Government, 8 1/2 acres were purchased from streets.

THE TERMINALS
Carleton Point is a peninsular area jutting out nearly half a mile from the general coast line and varying in width from about 500 yards at its widest to 200 yards at its narrowest part. The Car ferry will be built part on the south side of this peninsula, about midway between the general coast line and the outer point, and will be 2,200 feet long. At a distance of 500 feet from the end of the pier a breakwater 800 feet long will be built as a protection to the pier. The basin formed by the pier and breakwater will constitute the harbor and will have a depth of 22 feet at low water. An examination of the records on file in the Registry Office at Summerside shows that the government has secured 47.11 acres of land on the point and immediate vicinity, which will be laid out into railway yards and on which the railway buildings will be erected. The extent of yard room and general accommodation provided will give an idea of the greatness of the undertaking contemplated.

THE TOWN SITE
Of the land secured by the Government, 8 1/2 acres were purchased from streets.

Mr. E. F. Crosby and nearly 17 acres from a syndicate who were overlooked enough to see the coming prospects and secured the land before the work was commenced. The syndicate consists of the following: Messrs. E. F. Crosby, G. W. Dawson, Cape Traverse, P. B. Gillespie, Frank Schaeffer, Carleton, and LeRoy Holman of R. T. Holman, Limited, Summerside. Both Mr. Crosby and this syndicate still hold a number of choice lots adjoining the railway and terminus and on which, no doubt, the prospective banks, stores, hotels, barber shops and other homes of the trades and professions of the coming city will be built.

ATTRactions

Apart from the importance attaching to this place as the terminus of the Car ferry, with all that that involves in railway accommodation, transfer yards, harbor accommodations, Carleton Point has many attractions all its own, which will unquestionably make it a popular centre, no that it is accessible by railway. The land is high and dry, affording every possible convenience for sewerage and sanitary arrangements. On the north side is Seven Mile Bay, one of the best sheltered and most picturesque sheets of water around the Island's coast. On the south side is another equally attractive bay, both affording excellent bathing and boating spots that, it may confidently be expected that Carleton will be one of the Island's most popular summer resorts, even before it grows into an important railway town, as it is sure to do in the very near future.

THE SURROUNDINGS

Another factor, and by no means the least important as regards the future of Carleton is the fact that it is in the centre of the richest farming section in the province. Although there are many excellent farms scattered over the province it is doubtful if any other section of it contains such a continuation of invariably superior farms as that in the immediate vicinity of Carleton. This section extends from Hampton on the east to Summerside on the west, along the shore front a distance of about 30 miles, Carleton being in the centre. Inland, and belonging to the territory, also, are such thriving settlements as Trvon, Albany, Kingsville, Middleton, Freetown and Wilmet.

EVIDENCES OF PROSPERITY.

As an indication of the progressiveness of this section it might be mentioned that the writer was shown a residence built during the past year which will compare favorably with any dwelling in the province, city or country. This is the residence of Mr. G. W. Dawson, one of the representative farmers of Cape Traverse. It is a large thirteen room cottage, fitted up with every modern convenience, including hot and cold water, sewerage and electric light. The interior arrangements are modern, up to date and even luxurious, being richly and tastefully furnished with the finest materials. The water system is the Paton's Morse pneumatic pump, the first of the kind installed in the province. It works most satisfactorily giving a pressure in all the taps throughout the house fully equal to that given by the water systems in Charlottetown and Summerside.

It is in the midst of such farms as this that the new town of Carleton is to be situated and from which it will derive a large part of its sustenance. Surely no more reliable feeder could be found for a town possessing such shipping facilities as the new Carleton will have when the operations now in progress are completed.

We are showing now a full line of the most delightful Talcum Powders on the market. The line is made up of Yucca, Violet Dulce, Violet, Rose, Carnation, Training Arbutus and many other dainty and popular kinds. All exquisitely perfumed, velvety, soft and antiseptic. There is nothing too good to say about them. Price, 25c. a box. McKinnon Drug Co., corner Great George and Kent Sts.

THE TOWN SITE
Of the land secured by the Government, 8 1/2 acres were purchased from streets.

THE TERMINALS
Carleton Point is a peninsular area jutting out nearly half a mile from the general coast line and varying in width from about 500 yards at its widest to 200 yards at its narrowest part. The Car ferry will be built part on the south side of this peninsula, about midway between the general coast line and the outer point, and will be 2,200 feet long. At a distance of 500 feet from the end of the pier a breakwater 800 feet long will be built as a protection to the pier. The basin formed by the pier and breakwater will constitute the harbor and will have a depth of 22 feet at low water. An examination of the records on file in the Registry Office at Summerside shows that the government has secured 47.11 acres of land on the point and immediate vicinity, which will be laid out into railway yards and on which the railway buildings will be erected. The extent of yard room and general accommodation provided will give an idea of the greatness of the undertaking contemplated.

THE TOWN SITE
Of the land secured by the Government, 8 1/2 acres were purchased from streets.

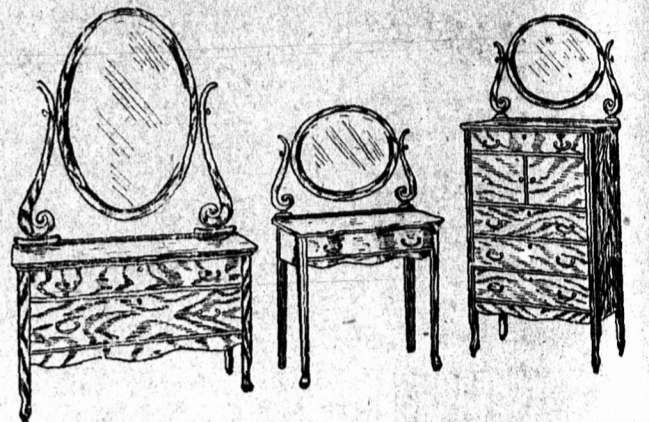
THE TERMINALS
Carleton Point is a peninsular area jutting out nearly half a mile from the general coast line and varying in width from about 500 yards at its widest to 200 yards at its narrowest part. The Car ferry will be built part on the south side of this peninsula, about midway between the general coast line and the outer point, and will be 2,200 feet long. At a distance of 500 feet from the end of the pier a breakwater 800 feet long will be built as a protection to the pier. The basin formed by the pier and breakwater will constitute the harbor and will have a depth of 22 feet at low water. An examination of the records on file in the Registry Office at Summerside shows that the government has secured 47.11 acres of land on the point and immediate vicinity, which will be laid out into railway yards and on which the railway buildings will be erected. The extent of yard room and general accommodation provided will give an idea of the greatness of the undertaking contemplated.

THE TOWN SITE
Of the land secured by the Government, 8 1/2 acres were purchased from streets.

THE TERMINALS
Carleton Point is a peninsular area jutting out nearly half a mile from the general coast line and varying in width from about 500 yards at its widest to 200 yards at its narrowest part. The Car ferry will be built part on the south side of this peninsula, about midway between the general coast line and the outer point, and will be 2,200 feet long. At a distance of 500 feet from the end of the pier a breakwater 800 feet long will be built as a protection to the pier. The basin formed by the pier and breakwater will constitute the harbor and will have a depth of 22 feet at low water. An examination of the records on file in the Registry Office at Summerside shows that the government has secured 47.11 acres of land on the point and immediate vicinity, which will be laid out into railway yards and on which the railway buildings will be erected. The extent of yard room and general accommodation provided will give an idea of the greatness of the undertaking contemplated.

Brighten Up Your Home

It is Spring house cleaning time and you will require new furniture for your new or old home. By ordering now you will avoid the May rush and be sure on prompt delivery. We have some of the most handsome fumed Oak sets that will look fine in your living room. Come in this afternoon and see what is new in Spring furniture and house furnishings. Everything that Paton's offer this spring is brand new and of the very latest designs and construction, and will save you at least 25 p. c., our goods having been bought early enables us to render you this saving.



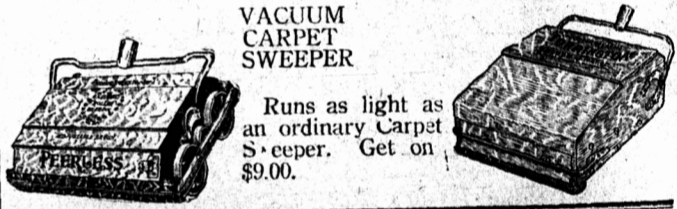
After House Cleaning

you will feel happy if you have bought your Carpets, Curtains, Linoleums and Suits that will do it. Everything most magnificent in style and coloring. This is the greatest New Furniture Store on P. E. Island and the best stock that was ever offered on the Island at any time, we certainly bought the choicest. We have swell furniture in Mahogany, Oak, Weathered Oak, Walnut, etc. We have dining room sets consisting of Buffets, Dinners, China Closets, Extension Tables, etc.

Pa tons

Special Showing of Baby Carriages

VACUUM CARPET SWEEPER



Runs as light as an ordinary Carpet Sweeper. Get on \$9.00.

Here's Help in House Cleaning

House cleaning time is here now and you need to be equipped with proper weapons to combat the dust, dirt and disease germs. Better call in and get your supplies here. See us for:

- Weighted Floor Brushes
- Floor Stains and Varnishes
- Paint for interiors,
- Wood Polishes,
- Polishing Cloths,
- Mops,
- Brooms,
- Brushes,
- Scrubbing Pails,
- Alabastine,
- Kalsomine,
- Step Ladders,
- White Wash Brushes,

Prepared wax for floors. Everything else you could possibly want.

FENNELL & CHANDLER
Victoria Row

Fire Insurance A Necessity

Then insure in good strong stock companies, which never contest an honest claim such as is represented by

E. R. BROW

Charlottetown

WOMEN'S SHOES

Our women's shoes are particularly well made, are particularly well shaped, and they are Particularly Well Liked. See our Patent & Gun Metal butt. \$3.00 also a nice Tan butt. \$2.75 special value. It is not necessary to pay high prices here in order to get good shoes.

GOFF BROS