

# LIFE ON THE FARM ILLUSTRATED



Here are two Buckskin horses seven and eight years old. They are orange in color. The picture was taken on the farm of Mr. George Parenteau, at Lorenzo, Sask., where he carries on mixed farming, cattle and sheep raising.



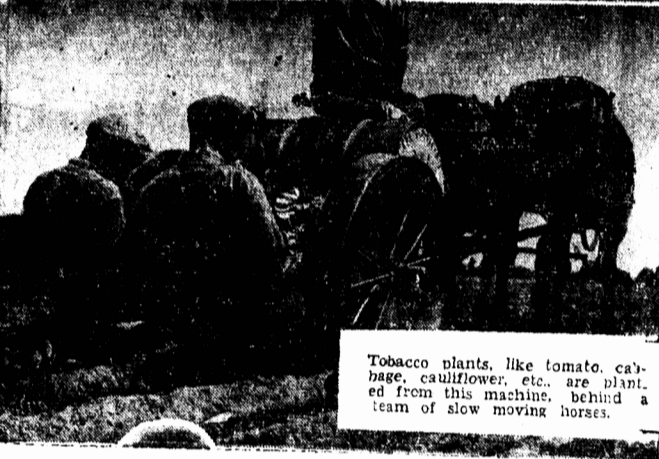
A good crop of flue-cured tobacco in Southwestern Ontario demands a well tilled soil plus plenty of fertilizer. Our picture shows fertilizer being sown in strips.



Another essential is big healthy plants, and these are usually produced in the tobacco grower's own greenhouse shown below and at left.



Denmark is predominantly agricultural. The greater part of the country is flat and well irrigated throughout. Although ravaged by the war, as those in picture below, are well kept although small and the fields clean and intensively cultivated.



Tobacco plants, like tomato, cabbage, cauliflower, etc., are planted from this machine, behind a team of slow moving horses.

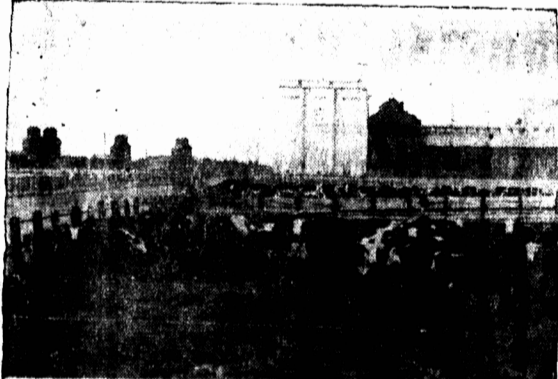
Southwestern Ontario produces most of Canada's tobacco, with British Columbia and Quebec contributing a comparatively small amount. However the 1946 season will see Ontario growers planting close to 1,000 acres. This year will be the first experiment with the cigar leaf. As a result of the Provincial and Dominion Agricultural Conference in Ottawa last December, a substantially larger crop has been recommended for 1946. Given a break by the weather, which is a huge contributing factor to the success or failure of the whole crop, Ontario tobacco growers might produce in the vicinity of 100,000,000 lbs. of flue-cured leaf in 1946. This would mean that tobacco has come a long way since the 1939 output of 30 to 40 million. There is no doubt that tobacco growers are planning larger crops this year, and with the continued help from the government's campaign to bring more people to the tobacco farms, Canada's most up-and-coming industry will be established. Last year growers received a minimum average price of 33 1/2 cents per pound for flue-cured tobacco. If growers get the same price this year, with the expected increase in planting, Canada's tobacco industry will be financially secure in return for the planter.



The great job done by the women of Britain who joined the Land Army for the duration of the war is apparently not finished, for the British Government decided to maintain the Land Army until after harvest, 1948. Despite prisoner labor and returning ex-servicemen, farm labor is desperately needed, and a National W. L. A. Recruiting Campaign is enrolling hundreds of volunteers, aged 17 to 40, to replace "old timers" due for release. They will undertake to give mobile service for at least two years. Above, left: Trainees of the Women's Land Army gathering sugar beets in the fields of Northamptonshire. Institute of Agriculture. Right: Dorcas Thorpe, formerly a student, and Peggy Ayres, who previously worked in a printing plant, plowing a field on their tractors. Left: A team of Land Girls enjoying a well-earned rest.



Feeder cattle move from the ranch to the feedlot, a typical Southern Alberta scene.



Livestock on feed at the Picture Butte sugar factory

The sugar factories at Raymond and Picture Butte, winding up their run for the 1945-46 season, have turned out around 107,000,000 pounds of refined sugar to replenish the sugar bowl of the Prairies. Meanwhile, at the sugar factories thousands of head of lamb and cattle are putting on weight steadily at the feedlots. Succulent beet pulp is going into meat needed for the domestic and overseas markets and while some of the feeders are cutting down their herds the general volume of feed, in fact, is much the same as last season. Feeders stand to show a good profit with markets holding up and the demand for both finished lambs and beef continuing firm.

In Southern Alberta approximately 125,000 lambs and 35,000 cattle are put on feed during the winter beet pulp and molasses proving a highly concentrated and useful supplemental feed for a large bulk of this commercial stock.



The marshes of the Maritime Provinces of Canada are rich alluvial deposits. The tides of the Bay of Fundy control the difference between high and low water is as much as 80 feet and even in Saint John harbor the maximum rise of water is 32 feet. In the head waters of the bay the ascending tide attains a great momentum rushing up in a

great wall of water called the "bore", which, at certain seasons and at certain places, reaches a height of several feet. This rapid flow continues until the tide is fully in and then the water gradually ebbs away. The intrusion of the tide carries with it much fine soil and, as the more sluggish outflow cannot carry this soil away, it is deposited. The deposits so formed constitute the marshes of Nova Scotia and New Brunswick, the richest agricultural land in these provinces. These two scenes show what man has to do to protect his land from the ceaseless poundings of the tide. At this point, near the Dominion Experimental Farm, Nappan, N. S., a strong current constantly wears away the bank. These pictures were taken three or four years ago and since that time we understand this dyke has been breached and repaired once again.

### MUST HAVE PERMIT TO IMPORT PLANTS

Before ordering nursery stock plants for importation into Canada from another country, an application for a permit must be made to the Chief, Plant Protection Division, Dominion Department of Agriculture, Ottawa.

In the application, details must be given as to the number, kind, variety, and value of the plants; the name and address of the importer and of the shipper; to what point (other than the address of the importer) the plants are to be forwarded by parcel post, express, or freight.

If no prohibited plants are included in the application, a numbered permit will be issued to the applicant without charge. If the parcel is to be sent by parcel post, a special mailing label will be sent with the permit. The importer will then send his order, quoting the number on the permit, and enclosing labels, to the nearest Customs Office. When the shipment has arrived, the permit will be surrendered to the Customs with the other clearance papers.

LONDON — (CP) — Special clothing coupons were issued Flory Mollen when thieves stole his clothes from a car just before he got on a flight to India.



Flora Robson, British and American star of stage and screen, portrays Angelique in Warner Bros. "Saratoga Trunk." Ingrid Bergman, Gary Cooper star.

The teaching of handicrafts by members of the Nursing Auxiliary Section, Red Cross Corps, at military hospitals is a vital part of Red Cross service, and one in which hospitalised servicemen take a keen interest. The work has therapeutic value, as well as being an absorbing pastime to those engaged in it. In this picture a young veteran at St. Anne de Bellevue Military Hospital is shown learning the intricacies of weaving under the guidance of a Red Cross handicraft instructor. The 1946 campaign to enroll new members into the various sections of the Red Cross was launched on April 8.



Here the showmen won the prize — not the animals. These Queensey calves (above) at the Nova Scotia Agricultural College Fair are shown by (left to right): Earl Johnson, Bernard Foster and Harry Quinn, who placed first, second and third in the class in that order.



Found last fall by William C. Linton of South Bend, Ind., these two flying squirrels were nursed through the winter on warm milk fed with an eye dropper. The squirrels have started to eat nuts but their diet is still supplemented with warm milk.