

# AutoStrop SAFETY RAZOR



## Of Supreme Necessity

Every soldier's kit must contain certain things if he is to present that smart appearance which is so necessary in our Army.

Of these probably the most important is his razor—it must "stand up" under all conditions—it must be ready at all times so that he can get a clean, velvety, comfortable shave in the shortest time.

This is only possible with the AutoStrop Safety Razor because it is the only one that sharpens its own blades automatically.

Include an AutoStrop in your next Overseas package.

Price \$5.00

At leading dealers everywhere

22c postage will deliver an AutoStrop Overseas by first class registered mail.

AutoStrop Safety Razor Co.

Limited

83-87 Duke St., Toronto, Ont.

1918

1918

1918

1918

1918

1918

1918

1918

1918

1918

1918

1918

1918

1918

1918

1918

1918

1918

1918

1918

1918

1918

1918

1918

1918

1918

1918

1918

1918

1918

1918

1918

1918

1918

1918

1918

1918

1918

1918

1918

1918

1918

1918

1918

1918

1918

1918

1918

1918

1918

1918

1918

1918

1918

1918

1918

1918

1918

1918

1918

1918

1918

1918

1918

1918

1918

1918

1918

1918

1918

1918

1918

1918

1918

1918

1918

1918

1918

1918

1918

1918

1918

1918

1918

1918

1918

1918

1918

1918

## Bonshaw-Charlottetown

### TIME TABLE

From Bonshaw	From Ch'Town
Tues. 3, 8.30 a. m.	Tues. 3, 6 p. m.
Fri. 6, 10.00 a. m.	Fri. 6, 6.30 p. m.
Tue. 10, 5.00 p. m.	Tue. 10, 1.00 p. m.
Fri. 13, 6.00 a. m.	Fri. 13, 3.00 p. m.
Tue. 17, 8.30 a. m.	Tue. 17, 5.00 p. m.
Fri. 20, 9.30 a. m.	Fri. 20, 6.00 p. m.
Tue. 24, 10.30 a. m.	Tue. 24, 6.30 p. m.
Wed. 25, 10.30 a. m.	Wed. 25, 8.00 p. m.
Fri. 27, 6.00 a. m.	Fri. 27, 2.00 p. m.

Freight must be delivered one hour before sailing.

## Charlottetown Exhibition Accommodation of Visitors

Any householders of Charlottetown willing during Exhibition Week, to take boarders, providing lodging and board, or lodging alone, will kindly call at the undersigned's office or send him a note, giving their address and stating the number they can provide for, and the charge per day.

C. R. SMALLWOOD  
Secretary-Treasurer

## Auction Sale of First Class Household Furniture

With a view to some changes to be made in her residence, I am instructed by Miss Isabel McMillan of Rowanwood, Wheatley River to sell by Public Auction on the premises on Saturday, Sept. 21st, at 1 o'clock p. m. A quantity of household furniture consisting of the following:—Parlor Suite, including 4 easy chairs, spring seats, tapestry upholstery, large sofa, chesterfield design. Dining Suite eight pieces including sideboard extension table 41 x 94 inches, six chairs upholstered seats, four dining room chairs, bookcase solid oak, tables, easy chairs, rockers, hanging lamps etc., 4 carpet squares, including one crimson effect 11 x 14 1-3 12 1-6 ft. two smaller size crimson, iron bedsteads, spring mattresses etc, runners, oilcloth and tapestry other articles etc.

PETER BRODIE,  
Auctioneer.

1387-9-14wthu M 31 pd

## Wanted Fat Hogs

We are prepared to buy any quantity of fat hogs on hoof commencing Sept. 16th be sure you get our prices before killing on farm,

J. M. ROOP & CO.

Plant on Kensington Road

Phone 553  
1322-9-10mwfrillDec9pd.

## PURE BRED SHEEP

The Department of Agriculture in co-operation with the Live Stock Branch, Ottawa, wishes to announce that special effort is being given to the distribution of pure bred sheep for the benefit of all provincial breeders. Any one having animals of either Sex to offer for sale, or desiring to purchase, should communicate with W. J. Reid secretary Sheep Breeders' Association, Charlottetown at once.

1364-9-12ME71.

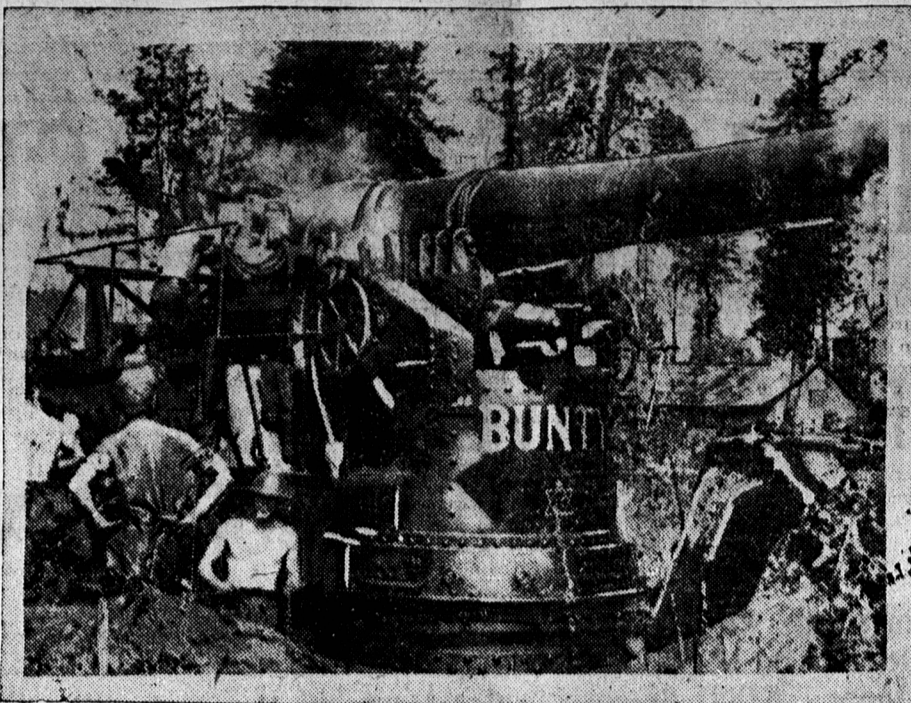


## Synopsis of Canadian Northwest Land Regulations

THE sole head of a family or any male over eighteen years old may homestead a quarter section of available Dominion land in Manitoba, Saskatchewan or Alberta. Applicant must appear in person at the Dominion Lands Agency or Sub-Agency for the District. Entry by proxy may be made at any Dominion Lands Agency but not Sub-Agency on certain conditions.

Duties—Six months residence upon and cultivation of the land in each of three years. A homesteader may live with a nine miles of his homestead on a farm of at least 80 acres, on certain conditions. A habitable house is required except where residence is performed in the vicinity.

W. W. CORY, C. M. G.  
Deputy Minister of the Interior  
N.B.—Unauthorized publication of this advertisement will not be paid for.



A "BUNTY"

One of the heaviest guns on the British front, mounted on a permanent base and well-concealed.—British official photograph.

## To Relieve Catarrh, Catarrhal Deafness And Head Noises

Persons suffering from catarrhal deafness, or who are growing hard of hearing know that this distressing affliction can usually be successfully treated at home by an internal medicine that in many instances has effected complete relief after other treatments have failed. Sufferers who could scarcely hear have had their hearing restored to such an extent that the tick of a watch was plainly audible seven or eight inches away from either ear. Therefore, if you know of someone who is troubled with head noises or catarrhal deafness, cut out this formula and hand it to them and you may have been the means of saving some poor sufferer perhaps from total deafness. The prescription can be prepared at home and is made as follows:

Secure from your druggist 1 oz. Parmitin (Double Strength). Take this home and add to it 1-4 pint of hot water and a little granulated sugar; stir until dissolved. Take one tablespoonful four times a day. Parmitin is used in this way not only to reduce by tonic action the inflammation and swelling in the Eustachian Tubes, and thus to equalize the air pressure on the drum, but to correct any excess of secretions in the middle ear, and the results it gives are nearly always quick and effective. Every person who has catarrh in any form, or distressing rumbling, hissing sounds in their ears, should give this recipe a trial.

Minard's Liniment used by Physicians

## SEALED TENDERS

Sealed tenders addressed to the undersigned, will be received until Monday, September 30th next, for the ranching of from 5 to 9 pairs of Silver Black Foxes, the property of the Souris Silver Black Fox Co., Ltd., tenders to state the percentage of the natural increase for 1919 which they will accept for ranching; also location of ranch. The lowest or any tender not necessarily accepted.

C. D. MCKINNON,  
Secretary.

Souris, Sept. 11th, 1918

1484-9-20 fmluftrj 4 1

## Notice to Oyster Fishermen

All fishermen intending fishing oysters are requested to apply for their License before the first of October, and also comply with Subsection 3 of Section 10 of the Fishery Act, which is as follows:—

All boats fishing for oysters on Public beds shall have a registration number, corresponding with that of the License, legibly marked or painted on the bow of the boat, in white colored letters on a black ground, and the initial letter of the Port to which such boat belongs, such letter to be at least eight inches in length. Any one violating said regulations will be prosecuted as the law directs. Application for Licenses may be made to any Fishery Officer of the Fishery Office, Charlottetown.

S. T. GALLANT  
Inspector of Fisheries

1489-9-20fsmw41.

## STOCK QUOTATIONS

HALIFAX, N. S., Sept. 19.—(Quotations furnished by F. B. McCurdy Co., stock and bond brokers, members of the Montreal Stock Exchange, McCurdy Building, Halifax, N.S.)

### CLOSING PRICES

	Yesterday	Today
A. F. ....	84%	85%
Atcheson ..	—	—

Anaconda ..	67%	67%
M. F. Ct. ...	102%	102%
Mex Nor Power ..	104%	104%
Reading .....	86%	86%
S. T. U. ....	87	45%
S. P. ....	85%	85%
Crucible .....	64	64
U. P. ....	—	124
P. R. S. ....	—	—
Alo .....	—	—
A. R. ....	77%	77%
U. T. ....	—	81
C. P. R. ....	161	162 1/2
Central .....	73	73%
U. S. ....	109 1/2	109 1/2

## DESIRABLE PROPERTIES AT AUCTION

I am instructed by the Trustee's Estate of Owen Connolly to sell by auction, in front of the Brick Building, Queen Street, occupied by me on Tuesday, 8th October, 1918 at eleven o'clock a. m. the following excellently located, dwelling houses, shops and lands, namely:

- 1 That beautiful 2 1-2 story three tenement house situated on the south side of Water Street west end, fitted up with hot water, baths, electric light and a complete system of sewerage.
- 2 That excellent 2 1-2 story double tenement house situated on the east side of Havillan Street, nos. 10 and 12, fitted up with hot water, baths, electric light and a complete system of sewerage.
- 3 The building on corner of Queen and Dorchester Streets, occupied as stores etc.
- 4 That desirable double tenement house, situated on south side, Dorchester Street, nos. 100 and 102, fitted up with closets, electric light and a complete system of sewerage.
- 5 50 1-4 acres of superior land situated on the south side of the Lower St. Peter's Road, adjoining Andrews and Newsomes property on the east and the Government Stock Farm on the south.
- 6 25 acres of excellent land situated on the south side of the Lower St. Peter's Road, east of the Asylum Road, north of the Government Stock Farm, and adjoining the 50 1-4 acre field.
- 7 150 acres of land with buildings thereon situated between the Norwood and Union Roads, about 2 1-2 miles from Charlottetown. A fine stream of water runs through the centre of the farm, is well adapted for sheep raising as well as farming, schoolroom adjacent.

TERMS:—25 per cent of the purchase money to be paid down, balance in five equal yearly instalments with interest at 6 per cent or purchaser may pay all Cash if he desires.  
R. BEAIRSTO,  
Auctioneer.

1507-9-20 24 Oct. 2&5-51

## Canadian Government Railway PRINCE EDWARD ISLAND Time Table In Effect June 21st, 1918

### READ DOWN Atlantic Standard Time READ UP

P. M.	P. M.	A. M.	Dp	Charlottetown Ar	P. M.	A. M.	A. M.
3.10	12.30	6.15	Dp	Hunter River "	7.15	11.55	10.30
4.23	2.03	7.15	Ar	Emerald Jct. "	6.10	10.45	9.00
5.02	3.00	7.45	"	Borden Dp	5.35	10.04	8.00
6.35		8.45			4.30		6.30
P. M.	P. M.	A. M.	Dp	Borden Ar	A. M.	A. M.	P. M.
4.30		6.30	Ar	Emerald Jct.	8.45	10.04	6.35
5.20	3.15	8.00	Ar	Kensington	8.05	9.31	5.00
5.53	4.00	8.47	Ar	Summerside Dp	7.05	9.00	4.00
6.25	4.35	9.35			6.30		3.30
P. M.	P. M.	A. M.	Dp	Summerside Ar	A. M.	P. M.	P. M.
6.45		11.30	Dp	Port Hill	9.50	8.40	2.05
7.45		1.21	"	O'Leary	7.44	12.27	
8.34		2.55	"	Alberton	6.55	11.01	
9.15		3.58	Ar	Tignish Dp	6.09	9.42	
9.55		4.55			5.35	8.40	
A. M.	P. M.	A. M.	Dp	Charlottetown Ar	A. M.	P. M.	A. M.
6.45	2.50	6.15	Dp	Mt. Stewart	9.50	5.50	
8.75	4.15	7.15	Ar	Morell	8.35	4.15	
9.12	4.42	8.00	Ar	St. Peters	8.07	3.17	
9.42	5.02	8.45	Ar	Souris Dp	7.45	2.40	
11.15	6.05	9.35			6.45	1.15	
P. M.	P. M.	A. M.	Ar	Elmira Dp	A. M.	P. M.	A. M.
7.20		8.50	Ar	Mt. Stewart	9.50	5.50	
8.45		10.00	Dp	Montague	8.35	4.15	
9.25		10.40	Ar	Georgetown Dp	8.07	3.17	
11.20		11.20			7.13	2.10	
Sat. only	Dly ex Sat & Sun	Sat. only	Dp	Charlottetown Ar	A. M.	A. M.	A. M.
3.10	3.10	3.10	Ar	Vernon River	10.15	10.05	
4.25	4.55	4.55	Ar	Murray Harbor Dp	8.20	8.51	
5.55	7.05	7.05			6.20	7.20	

Except as noted, all the Above Trains Run Daily Sunday Excepted

H. H. MELANSON  
Passenger Traffic Manager  
Moncton, N. B.

W. T. HUGGAN  
District Passenger Agent  
Charlottetown, P. E. I.



Far more effective than Sticky Fly Catchers. Clean to handle. Sold by Druggists and Grocers everywhere.

## NOTICE

The annual meeting of the Spring Park Black Fox Co. Ltd. will be held at 8 o'clock p. m. on the evening of October 3rd, in the Y.M.C.A. rooms.

R. E. SPILLETT,  
Managing Director.  
1494-9-20 3i cod

## Sale of Holsteins

Owing to ill health I am offering for immediate sale 10 head of pure bred Holstein cows and heifers. All in calf to "Inferno" one of the choicest bulls in the Maritime Provinces. Easy terms.

GAVIN HARDING  
Englewood Farm  
Graham's Road  
1435-9-17Mwfr131.

## CANADIAN GOVERNMENT RAILWAYS PROVINCIAL EXHIBITION, CHARLOTTETOWN —SEPTEMBER, 24th TO 28th INCLUSIVE, 1918—

Excursion Return Tickets at FIRST CLASS ONE WAY FARE AND ONE THIRD will be issued from all Stations to Ch'Town on September 23, 1918 good to return up to and on September 28th, 1918.

Excursion Return Tickets, at ONE WAY SINGLE FIRST CLASS FARE will be issued from all Stations to Charlottetown by all trains on September 24th, 25th, 26th and 27th, good for return up to and on September 28th, 1918.

### TRAIN ARRANGEMENTS AND FARES

STATION	LEAVE	LEAVE	FARE
Tignish	5.35 A. M.		4.10
O'Leary	6.55		3.15
Summerside	9.00	6.30	1.70
Kensington	9.31	7.05	1.45
Emerald Jct.	10.04	8.00	1.15
Hunter River	10.45	9.00	.70
Charlottetown Arr.	11.55	10.30	
Elmira	5.25		2.30
Souris	6.45		2.10
St. Peters	7.45		1.45
Mt. Stewart	8.35		.80
Bedford	9.03		.50
Charlottetown Arr.	9.50		
Georgetown	6.35	5	1.70
Montague	7.13		1.70