

# Graham-Paige Quality at \$1050

(Two door sedan, f. o. b. Windsor, taxes and special equipment extra)



## Outstanding, by Any Measure of Value

Model 612 is a powerful car, built to give good, dependable, lasting performance. With prices beginning at \$1050, f. o. b. Windsor, taxes extra, quality is outstanding, by any measure of value.

A large engine, with a seven bearing crankshaft (2 1/2 inches in diameter) delivers 62 horsepower smoothly. Overheating is practically impossible, and uniform cooling is assured by water jackets extending to the very bottom of every cylinder.

Not only in the motor, but all through the 612, you will find extra size, extra weight, and extra strength. Ready for the road, it weighs 3,125 pounds. Experience has convinced us that every pound of this greater weight is essential to

better performance, greater comfort, long life and safety.

The four wheel hydraulic, internal expanding brakes are larger than usual in a car at this price, and fully protected from dirt and water. Service and emergency brakes are entirely separate—to provide the safety to which we believe every motor car buyer is entitled.

Bodies are beautiful and roomy, finished with upholstery of genuine mohair carrying a guarantee of long life attached to every cushion.

We ask you to see Model 612, and to enjoy its performance—before you buy any car.



A Car Is Ready  
for You to Drive

Joseph D. Graham,  
Robert C. Graham  
Ray A. Graham

### ATLANTIC MOTORS Distributors

187 Great George Street, Charlottetown, P. E. I.  
RUSSELL CHAMPION Dealer  
Kensington, P. E. Island.  
Other dealers, points open. Write for dealers proposition.

#### ON TO HER CURVES

Teacher was trying to explain the use of adverbs as applied to speed. Walking across the room very rapidly she turned and asked: "Now, how would you say I walked then, children?"

With one accord, and without a smile, they all shouted "Bow-legged!" Auntie: "Do you ever play with bad little boys, Willie?"

Willie: "Yes, Auntie."

Auntie: "I'm surprised. Why don't you play with good little boys?" Willie: "Their mothers won't let me."

There are so many automatic devices for the home now any bride can go right to housekeeping if she is an electrical engineer or master mechanic.

The correspondence between Burns and Clarinda, whom the poet has described as "mistress of my soul," published at Edinburgh in 1843, was sold recently in London for \$9,500.

Pneumonia, following an illness contracted while electioneering for the Socialists in the last election in England, has caused the death of the Hon. Mrs. Dighton Pollock.

### The Car Owner's Scrap Book

By G. W. Donald

#### Installing Piston Rings.

When installing pistons into their cylinders it is of course necessary to compress the piston rings to enable them to enter the pistons. There are various ways of doing this, but probably the easiest and quickest method is as follows:

A ring of metal, preferably of brass, is turned on a lathe. Make the bore of this ring of the same diameter as the cylinder bore for a short distance, say about one fourth inch. From this point the bore is tapered, so that at the larger end the bore has increased about one half inch. The width of the ring should be about 1 1/2 inches.

The method of operation is to place the ring directly over the cylinder with the small end down. The piston, with its rings inserted in the grooves, is then passed through. As the piston passes through the ring, the piston rings are gradually compressed, permitting them to enter the cylinder without the least difficulty.

#### A Garage Door Accessory.

Where the garage doors are of the hinge type, every car owner has had the experience of having the doors blown shut just when ready to back the car out or drive in, and in bad weather especially this is very annoying.

This trouble can be overcome by attaching a large hinge to the lower corner of each door, directly beneath the lock. These two hinges should be attached about two or three inches above the floor, according to the length of the hinges. The upper half of the hinge should be secured to the door and bent so that the joint stands out about a half inch away from the door. The purpose of this is to provide a springiness and permit the lower half to be folded back without danger of dropping when the door is closed. All required is to open the door and swing down the loose part of the hinge, which will act as a prop.

#### The Oil Drum.

It is economical to purchase oil by the large can, or drum, but it is sometimes very tiresome to hold this large can while pouring into the smaller one, especially if the oil is heavy and pours slowly. However, it is very easy to construct a stand to hold the drum, supporting the stand by a pair of rockers taken from a discarded chair. The result is that a tilting of the drum is all that is necessary.

#### Rusted Fenders.

The most common cause of fenders loosening at the fastenings and holes rusted through, is neglect in washing the undersides of the fenders, allowing dirt and mud to accumulate. Rust soon forms under this mud and after a certain length of time produces a rust hole. The best preventive is to keep the undersides of the fenders clean, and occasionally give the parts where the fenders are fastened a good application of oil.

#### Water Pump Coupling.

The water pump should be examined occasionally to see that the taper pin which secures the coupling is not loosening, and that the key is in place. In instances where it is necessary to remove this coupling, it may not have been replaced properly. The coupling and pin should be so secure that there is no possibility of the pin dropping out. Should the coupling loosen at some time when far from home it might necessitate quite a delay.

#### Removing the Hub Caps.

When the threads of the hub caps rust it is sometimes quite difficult to remove them. But here is a good way to do it. Place a wrench on the hub cap with the handle extending horizontally. Then place a jack under the handle of the wrench. The force of the jack will quickly loosen the cap. And this same method can be applied to any other stubborn nut, provided it is located where the jack can be placed under the wrench handle.

#### Watching the Little Things.

It is a grave mistake to devote all of the attention to the more obvious parts a car requires, but neglect the small things. For instance, on cars employing the gravity fuel system, the filler cap on the fuel tank is provided with a small hole extending clear through it. If this hole becomes clogged with dirt the fuel will not reach the carburetor, as the entrance of air into the tank is necessary to make the gas line flow.

#### Testing For Leaks.

One of the best ways to determine whether power is being lost due to a leaky spark plug, is to drop oil around the packing joints of the plugs. If the oil bubbles it is a sign that gas is escaping at that point. And the same test can be applied to cylinder head gaskets and other places where a leakage is suspected.

When applied to the manifold joints the oil will be sucked into the cylinder if a leak exists.

#### Cotter Pins.

A good cotter pin puller can be made from an old file. One end should be bent over, to receive the blows of a hammer, and a hook formed on the other end. The file should be heated and bent while hot, allowing it to cool of its own accord.

#### Shifting Gears.

Do not attempt to shift from the reverse gear to a forward gear while the car is in motion, nor attempt to shift from high gear to low while the car is moving. Do not try to shift from second to low while the car is moving unless it is going very slowly. Under ordinary circumstances it is best to stop the car before shifting from second to low.

#### Saving the Battery.

If the battery is weak, do not use the starter to crank the engine until the battery has been recharged. It is far better to use the hand crank and save as much current as possible.

## Happenings

Continued from page 8

On Friday evening July 12th, Mrs. Frank Nicholson, assisted by Miss Margaret McAulay, tendered a very pretty miscellaneous shower at her home 144 Prince Street in honor of Miss Jean Blanchard, whose marriage takes place shortly, there being about 80 girl friends of the bride-to-be present.

Mrs. H. K. Wright, and Miss Molly Wright of Montreal have arrived at Brackley Beach, where they will spend the summer at Sea View Hotel.

The Misses Kingston, of Toronto are expected this week to spend a months vacation on the Island.

Miss Ethel Palmer, who has returned to the city from New York, for the summer months is receiving a warm welcome from her many friends.

Dr. and Mrs. Donald of Moncton, N. B. were in Summerside on Wednesday to attend the celebration of Mrs. Donald's parents fortieth anniversary of their wedding.

Mrs. Carol Livingstone, of Plattsburg, N. Y., accompanied by her two children, Philip and Joyce are visiting in the city the guest of Mrs. Livingstone's mother, Mrs. C. C. Lyons.

Miss Isabelle Jamieson's many friends are welcoming her home from an extended visit to Pennsylvania.

Miss Alena and Irene Horns are guests at the Cox Hotel, Souris.

The tea hostesses at the Charlottetown Lawn Tennis Club, this afternoon will be Misses A. Mathieson, M. McDonald, J. Munn, L. Donald.

Rev. Theodore Ross, of Sussex, N. B. and Mr. George Ross, of Calgary Alberta, accompanied by his wife, are visiting the Island and are at present the guests of their sister, Mrs. D. R. Morrison, of Summerside.

Mr. and Mrs. George Robinson celebrated the fortieth anniversary of their wedding on Wednesday at their residence in Summerside, where the entire family gathered at a dinner party and spent a very jolly time. The party gathering was in the nature of a surprise and the happy couple were the recipients of many handsome presents and a congratulatory address was read by Mr. Morley Bell, a son-in-law. The house was charmingly decorated for the occasion and Mr. and Mrs. Robinson received many kind messages from absent friends. The Guardian joins in wishing them many more years of wedded life.

The Boston bag is copied for beach use in striped canvas, but has stiffly boarded sides and bottom. The linings are rubberized and two pockets are found for small articles. This bag comes with a patented lock that opens with a key. Another bag of a more general character has a wooden frame which is so shaped that it serves as a handle. These handle-frame combinations are painted in bright colors to match the fabrics used.

A lounging coat that is smart for wear at country houses, especially over a pair of handsome pyjamas, or for train or boat wear, is made of mink-colored crepe with an all-over stitched bird design. The collar is long and rolls back, and is attached to the narrow flat belt in front. With

# Redpack TOBACCO

is good pipe tobacco

Fragrant  
cool-smoking  
Satisfying



# 15¢

ASK for REDPACK  
IN TIDY RED PACKAGES

# NASH '400'

LEADS THE WORLD IN MOTOR CAR VALUE

Delivered, Fully Equipped  
Prices of 23 "400" Models,

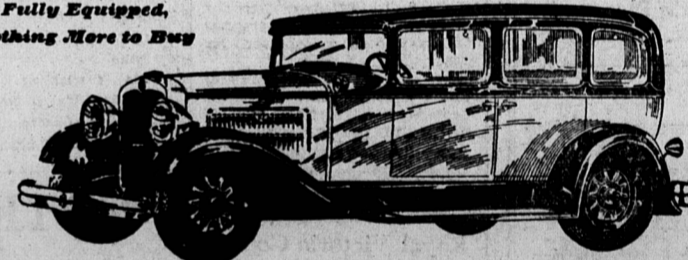
\$1270 to \$3200

including Touring, Roadster, Coupe, Cabriolet, Victoria and Sedan Models

"400" Special Six 4-Door Sedan

\$1986

DELIVERED  
Fully Equipped,  
Nothing Here to Buy



## VALUE FAR AHEAD OF ITS PRICE FIELD

FIX firmly in your mind the delivered, fully equipped price of this Nash "400" Special Six Sedan.

Then see the car and, by all means, drive it. Nash never has offered a greater value. No one ever has produced finer performance in its price field.

This very moderately priced motor car has the Twin Ignition motor—the year's outstanding development in power—more power, more speed, less gasoline.

It has Bijar Centralized Chassis Lubrication—a feature of value and convenience highly esteemed by those who drive very costly motor cars.

It is factory equipped, without extra

cost, with Lovejoy hydraulic shock absorbers, chromium nickered bumpers, front and rear, spare tire lock and tire cover. The price quoted above also includes a spare tire and all freight and handling charges. There is nothing additional to pay for the customary "extras."

And the Special Six Sedan has the style and manner so important to the fullest enjoyment of your motoring. Good taste and artistry of design are apparent in the purity and grace of every line and contour.

Remember the price. Remember that it is a fully equipped, delivered price. And don't fail to see this sedan, and drive this sedan, before you buy. On display today at all Nash dealers.

NASH MOTOR SALES  
CHARLOTTETOWN AND SUMMERSIDE

# ESSEX THE CHALLENGER



has the right  
to dare

## Challenging Variety at our Color Show

COME see at our Color Show the beauty and variety of color which Essex offers at no extra cost.

With its open challenge, that accepts no car—

—with its 24% greater power—greater beauty, adult-size capacity, riding ease and economy—

—Essex establishes also an outstanding leadership in proven VALUE.

Essex offers standard fine car equipment, formerly identified only

with costly cars—available only at extra cost on cars of Essex price.

At no extra cost—these features include: 4 Hydraulic shock absorbers—Starter and electric gauge for fuel and oil on dash—Radiator shutters for heat control—Adjustable seats, front and rear—All bright parts chromium-plated—saddle lamps—controls on steering wheel—electro-lock—New type double-action 4-wheel brakes uniformly effective in all weather—Patented Super-Six advantages eliminating vibration.

A Wide Choice of Color  
AT NO EXTRA COST

\$840

AND UP  
All prices f. o. b. Windsor,  
taxes extra.

The H. M. C. Purchase Plan offers the lowest terms available.

Gaudet Bros.

Dealers for Prince Edward Island

Headache  
Bathe the head with Minard's in water. Also heat and inhale Minard's.



## JUST ARRIVED FROM ENGLAND

A nice fresh stock of Naylor's Genuine English White Lead.

This product will stand the weather better and go further than any other lead on the market.

Also always on hand Paint Oil, Turpentine, Dryers, etc., etc.

Bethune Hardware Co. Ltd.

Phone 757.

133 Queen Street.

"THE FRIENDLY HARDWARE STORE"