

THE KAISER'S HENCHMAN

Von Bethmann-Holweg Usually Credited With Sincerity, Abandons It

Germany has had five Chancellors, Bismarck, the incomparable, was a statesman; Caprivi and Hohenlohe, respectively, soldier and courtier; Bulow was a diplomat; Bethmann-Holweg, since 1900 the steersman of the Empire's destinies, is a philosopher.



HERR VON-BETHMANN-HOLWEG

von Bethmann-Holweg's Chancellorship has been uncommonly barren of promise.

It would be far beside the mark to charge the Sage of Hohen-Finow with utter lack of statesmanship qualities. Modest and retiring by nature, there is nothing of the flamboyant in his make-up.

He is generally credited with being sincere and honest, but this reputation suffered severely by his attitude at the beginning of hostilities with Belgium, it having been reported that he was both surprised and chagrined at Britain's regard for a "scrap of paper"—the solemn pledge that Belgium territory should not be violated, a pledge guaranteed by both Great Britain and Germany.

The Length of Wars

Following is a table showing the time occupied in deciding some of the big struggles of the past fifty or sixty years:

Table with columns: Wars, Duration, Years in Days. Includes entries for Crimean, United States Civil, Franco-German, Russo-Turkish, Spanish-American, Boer, Russo-Japanese, and Balkan wars.

Charlottetown Steam Navigation Co., Ltd.

Commencing Monday, the 1st of June, the STEAMER NORTHUMBERLAND leaves Charlottetown for Pictou, N. S., Daily, (except Sunday) at 8:20 'clock a. m., leaving Pictou on return about 4:00 p. m. Connections made at Pictou for all points in Nova Scotia.

G. W. WAKEFORD, Manager. Charlottetown, May 29th, 1914. 2672-5-30Mtd.

PLANT LINE

AUTUMN EXCURSIONS In Effect September 11th.

Charlottetown to Boston and return \$13.00. Tickets good for return within 30 days from date of issue.

The new twin screw steamer "Evangeline" sails from Charlottetown for Boston every Friday at noon. For folders and full information apply to

JAS. CARRAGHER, Agent. Charlottetown, P. E. I. 5489-9-5

Bonshaw Ferry Time Table

Launch Dalphin will leave Bonshaw for Ch'town calling at McArthur's, West R. Bridge and McEwen's Wharf.

Table with columns: Leave, Return. Shows times for Fri. Sept. 11th, Tues., Fri., Tues., Fri., Tues.

THE FURNACE LINERS

Sailings from Halifax to London.

Table with columns: Ship Name, Date. Includes "Shenandoah", "Piggy", "Kanawa", "Tobasco", "Durango", "Sachem", "Fagmore".

Furness, Withy & Co., Ltd. Halifax.

GROW MORE GRAIN

Conservation Commission Urges Using of Every Acre

In connection with the European war and its effect on the food supply of the world, the following bulletin, issued by the Commission of Conservation at Ottawa is of interest:

"Many farmers, when urged to try growing fall wheat, have excused themselves on the plea that it did not pay; but it is likely that for the next year or two, there will be ready sale at good prices for every bushel of wheat grown in Canada. Every farmer should endeavor to increase his production of grain next year by putting into use every acre capable of producing it.

"The grain production can also be increased by ploughing up the old unproductive meadows at once and sowing grain in the spring. They should be ploughed shallow NOW and be packed and disked and kept worked until autumn, when they should be thoroughly ploughed again, ready to be worked early next spring.

Socks For the Soldiers

It is difficult to realize what a perfect war machine the German army was and is, said an Englishman who fought with the Germans in 1870 and who now lives at Dover. Although the French troops, fighting in their own country, were starved and hopeless, the Germans never missed their meals. Except when the battles were actually in progress, the troops received their meals as regularly as if they were staying in a hotel.

Carnegie Blames Germany

Andrew Carnegie, refusing to join in protest against England's participation in the war, laid the blame for the conflict on the Kaiser. "I feel that Great Britain only did her duty, I believe the Kaiser did not know what he was doing but this is matter of past. The looms of the gods weave no erasures."

CANADIAN PACIFIC

TORONTO EXHIBITION

EXCURSION FARES

Table with columns: From Ch'town, Fares. Shows rates for \$34.35, \$25.75, \$21.55 for various dates.

W. B. H. WARD, D.P.A., C.P.R. St. John's, N.S. Geo. Waller, local agent Dominion Express Co., Building, Queen St.

Launch Dalphin

York Pt. Ferry Time Table Tuesday and Friday.

Table with columns: Leave, Return. Shows times for Fri Sept 11th, Tues Sept 15th, Fri Sept 18th, Tues Sept 22nd, Fri Sept 25th, Tues Sept 29th.

Eastern S.S. Corporation

International Line Change in Schedule, Increased Service.

Leaves St. John Mondays Wednesdays and Fridays at 9:00 a. m. for Lunenburg, Eastport, Port and Boston. Returning, leaves Central Wharf Boston, 9:00 a. m. Mondays, Wednesdays and Fridays for Portland, Eastport, Lunenburg and St. John. DIRECT SERVICE between St. John and Boston.

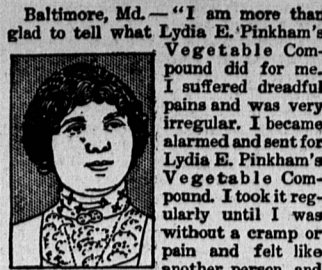
MAIN STEAMSHIP LINE

Direct service between Portland and New York. Leaves Franklin Wharf, Portland Tuesdays Thursdays and Saturdays at 6:30 p. m. for New York. Day trips leaving Portland at 10:30 A. M. for New York. Leaves St. John 7 P. M. Atlantic time on Tuesdays. Fridays and Saturdays for Boston direct.

St. John, Ticket Office, 47 King St. L. R. THOMPSON, T. R. & P. A. A. E. Fleming

THIS WOMAN'S SICKNESS

Quickly Yielded To Lydia E. Pinkham's Vegetable Compound.



Baltimore, Md.—"I am more than glad to tell what Lydia E. Pinkham's Vegetable Compound did for me. I suffered dreadful pains and was very irregular. I became alarmed and sent for Lydia E. Pinkham's Vegetable Compound. I took it regularly until I was without a cramp or pain and felt like another person, and it has now been six months since I took any medicine at all. I hope my little note will assist you in helping other women. I now feel perfectly well and in the best of health."—Mrs. AUGUST W. KONDNER, 1632 Hollins Street, Baltimore, Md.

Lydia E. Pinkham's Vegetable Compound, made from native roots and herbs, contains no narcotic or harmful drugs, and to-day holds the record of being the most successful remedy for female ills we know of, and thousands of voluntary testimonials on file in the Pinkham laboratory at Lynn, Mass., seem to prove this fact.

For thirty years it has been the standard remedy for female ills, and has restored the health of thousands of women who have been troubled with such ailments as displacements, inflammation, ulceration, tumors, irregularities, etc. If you want special advice write to Lydia E. Pinkham Medicine Co., (confidential) Lynn, Mass. Your letter will be opened, read and answered by a woman and held in strict confidence.

MORSON & DUFFY Barristers and Attorneys Solicitors for Royal Bank of Canada MONEY TO LOAN

You Can Buy A Ford Run About for \$540 IF---

the Ford people are successful in reaching an output of 30,000 cars between August 1st, 1914 and August 1st, 1915 a refund ranging from \$40 to \$60 will be paid on all cars bought between these two dates.

The new prices of the Ford Cars are Touring Cars \$630, Runabouts \$580 and Town Cars \$880, delivered in Charlottetown. With this discount in force the prices will be Touring Cars \$580, Runabouts \$540 and Town Cars \$820.

See about it today.

Bruce Stewart & Co. Ltd. STEAM NAVIGATION WHARF

Quebec Steamship SAILINGS OF STEAMSHIP "CASCAPEDIA"

Table with columns: DOWNWARD, UPWARD. Shows sailing dates for Montreal, Quebec, and Ch'town.

Subject to change, should circumstances require. CARVELL BROS. Charlottetown, P. E. I.

CASTORIA For Infants and Children. The Kind You Have Always Bought Bears the Signature of J. C. Watson. In Use For Over Thirty Years. CASTORIA. Exact Copy of Wrapper.

The Strength of a Will

Depends upon its being correctly drawn and secondly entrusted to a Strong Executor.

The Eastern Trust Company will advise with your Solicitor in drawing your will correctly, and act as your Executor and Trustee, insuring all the advantages of the best individual Trustees, with none of their drawbacks.

The names of its Directors and Officers, and its large Capital, are a guarantee of its Strength, Ability and Good Faith.

Its charges are regulated by Law and are no greater than those of an Individual.

Consultation or correspondence invited.

The Eastern Trust Co.

W. S. Stewart, Manager Charlottetown

Capital \$1,000,000. Total Assets \$15,000,000.

1487-3-5Msttf

For Sale

2 pairs Newfoundland Silver Black Foxes, these may be inspected at our Sales Ranch.



A few pairs of Patch and Cross foxes. We also handle Mink, Marten and Fisher.

NOW is the time to buy your stock. Call and see us before buying. Full information re Ranch building and Ranching given to customers.

Agents for the ANGLO-AMERICAN SILVER BLACK FOX CO., LIMITED.

The Farm Stock & Fox Exchange of P. E. I.

Head Office 36 Queen St. Charlottetown P. O. Box 4 Phone 485

LARGEST STEAMERS ALLAN LINE CANADIAN ROUTE

3 Sailings Weekly via St. Lawrence From TO LIVERPOOL From TO GLASGOW

Table with columns: Ship Name, Date. Includes "Montreal", "Victoria", "Quebec", "Tunis", "Albatross", "Montreal", "Scandinavian", "Hesperian", "Corinthian", "Gramplan", "Montreal", "Ionian", "Corinthian", "Sicilian", "Montreal", "Scandinavian".

For Reservations, Tickets, Etc., Apply Local Offices of Agencies W. K. ROGERS, City H. & A. ALLAN, Montreal

Permanent Silver Foxes Ltd

MOTTO:—Permanency. Aim: To produce the highest grade of Silver Fox pelts.

Important Announcement

The Permanent Silver Foxes Ltd., announces to the investing public that its interests and those of the Murray River Silver Black Foxes Company Ltd., are now amalgamated.

High Class Foxes at \$18,000

They offer to the public the choicest Silver Foxes obtainable all "Class A" at \$18,000 a pair. Six pairs of these—the Murray River's—are two years old and the other 7 to 9 pairs are this year's pups.

Your Chance Remember

This is your chance to get into a good strong company built up on permanent lines! You never had a better chance and you never will again. We stand in the unique position among fox companies that we are doing more than we said we would do.

Invest Today

Only a limited amount of stock remains to be sold, and the splendid offer now made, backed by this strong sound, safe and PERMANENT company is bound to sell it very quickly.

Directors

- ALEXANDER ROSS, M. D. of Ch'town President of the Prince Edward Island Fox Breeders' Association President. WILLIAM KEARNEY, Merchant of Murray River. COL. CURTIS S. EMERY, Collector of Customs of Newport, Vermont, Vice-President. HAMMOND KELLY, Stock Breeder and Farmer of Southport. BENJAMIN ROGERS, Broker of Ch'town, ISAAC E. BURDEN, Pownal, Gentleman. Secretary-Treasurer.

Form of Application

I hereby make application to Permanent Silver Foxes Ltd., of Charlottetown, Prince Edward Island to take the number of shares in the Capital Stock of the said Company set opposite my signature below. I enclose

APPLICATION FOR STOCK

Shares \$25 To BENJAMIN ROGERS, Jr. Secy-Treasurer Permanent Silver Foxes Ltd., Ch'town, P. E. I. Shares \$25

I do hereby apply for.....shares in the Permanent Silver Foxes, Ltd. Enclosed find \$.....being twenty percent and the balance I agree to pay on or before October 1, 1914.

Name..... Address.....