

BRUCE STEWART & CO., LTD. Charlottetown

PRINCE EDWARD ISLAND APRIL, 1920

Gas Engine and Motor Boat Fittings and Supplies

Everything listed is on hand for immediate shipment. And are the best obtainable. TERMS. Cash with order. Special prices to dealers. If you want goods by mail include plenty of postage, any over will be returned. All prices are subject to change without notice. Keep this sheet for future reference.



No. 6 Columbia Igniter

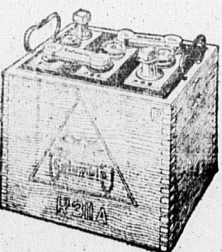
The world's standard dry cell, cost no more, lasts longer, best for gas engine ignition.

Each 45c
Fresh from the factory every week. Special price in bbls. of 125 cells to dealers.



Columbia Hot Shot Battery

A unit battery in attractive moisture proof case. The marvel of the age. No. 1 best for ignition and lights each \$2.90



Columbia Storage Battery

For automobile starting lighting and ignition to suit all makes of cars. Interchangeable terminals makes it possible to fit one type to a number of different cars. Prices in application.



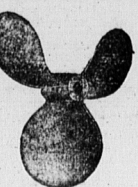
Spark Plugs

Rajah 1/2" and 3/4" each \$1.25
Splittort 1/2-3/4 each 1.25
Kopper King 1/2-3/4 each 1.25
Champion Priming 1/2" each 1.00
Champion O 1/2" each 1.00
Champion X 1/2" each 90
A. C. 1/2" 1.00
3/4" Champion Tractor 1.50
Metric Spark Plug 1.00
Postage each05



Battery Testers

High Quality Instrument \$1.50
Postage extra 5c.



Hyde "Pattern" Turbine Type Propellers

Made of Good Bronze and Polished Right Hand
Prices on Special Diameters and Pitches on Application

2 Blade

Diameter	Tobin Bronze Per ft.	Steel Per ft.	Fitting to Propeller	Brass Nuts
12 in. dia. 12 in. pitch	\$ 4.55	25	75	8.40
14 in. dia. 14 in. pitch	5.75	25	75	11.10
16 in. dia. 16 in. pitch	7.00	25	75	13.80
18 in. dia. 18 in. pitch	8.25	25	75	16.50
20 in. dia. 20 in. pitch	9.50	25	75	19.20
22 in. dia. 22 in. pitch	10.75	25	75	21.90
24 in. dia. 24 in. pitch	12.00	25	75	24.60
26 in. dia. 26 in. pitch	13.25	25	75	27.30
28 in. dia. 28 in. pitch	14.50	25	75	30.00

Boring and rearing up to 16in. 75c
boring and rearing over 16in. \$1.00

Motor Boat Shafting

Diameter	Tobin Bronze Per ft.	Steel Per ft.	Fitting to Propeller	Brass Nuts
3/4 in.	\$1.20	25	75	.15
7/8 in.	1.98	30	85	.20
1 in.	2.15	35	1.00	.30
1 1/8 in.	2.70	50	1.00	.30
1 1/4 in.	3.35	60	1.25	.40
1 3/8 in.	4.80	90	1.25	.50
2 in.	8.50	1.50	1.50	1.00

Bronze Lag Screws

3/4x3 1/2"	30c
7-16x1	35c
1/2x1 1/2	40c
5/8x5	75c

Stuffing Boxes

Extra long, lots of room for packing. Made of Cast Bronze and well finished.
3/4 inch \$2.50 postage 14c
1 inch \$3.00 postage 18c
1 1/4 inch \$3.00 postage 20c
1 1/2 inch \$3.50 postage 22c
1 3/4 inch \$6.50 postage 30c



Jump Spark Coils

K. W. Marine single \$9.00 postage 22c
K. W. Marine double \$15.00 postage 26c
Samson Marine single \$7.00 postage 22c
Canadian Marine single \$7.00 postage 22c
Canadian open type for Stationary engines \$5.50 postage 22c

Extra Springs and Points

K. W. for marine coil pair Sparkite \$1.00 postage 5c
Samson old or new style \$2.50 postage 5c
Canadian per pair \$2.00 postage 5c
Coil points only. Each 50c

Make and Break Coils

Edison type E-1 Each \$7.00 postage 30c
Edison type E-2 Each \$4.50 postage 18c
Type "S" round coil in metal case. Size of No. 6 dry cell \$1.65 postage 18c



Switches

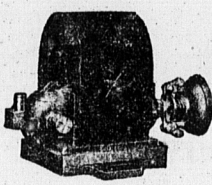
Single Lever Switches, as cut 40c
Double Lever Switches, as cut 50c
Simpleton Switch Spring connection, Single 35c
Double05
Postage each05

Battery Conectors

Battery Connectors each 3c

Ignition Cable

5 M. M. Primary Rubber covered ft.05
5 M. M. Primary Braided per ft.07
10 M. M. Secondary Rubber covered10
Single wire for make and break engines weather proof covering per ft.03



Comet Magnetos

"A Regular Little Power Plant"

Type L. Jump Spark \$26.50
Type L. C. Make and Break or Jump Spark \$28.00
Type L. X. Jump Spark for slow speed engines and multiple cylinder engines \$32.00
Type L. will fire one cylinder Jump Spark engine and furnish light up to 15 or 20 c.p. Type L. X. will fire 2 or 4 cylinder engine and supply light up to 30 c. p.



Genuine Stilson Wrench

6 in. \$1.80 8 in. \$2.00 10 in. \$2.25 14 in. \$3.15
18 in. \$4.50 24 in. \$6.50

Pliers

Forged Steel makes pipe wrench, screw driver and wire cutter Black 35c
Nickel 65c
Postage 07c

Heavy Coppered Spring Oilers 30c postage 7c

Screw Driver 1/4 x 4 in. Blade 20c postage 6c
Screw Driver 5-16 x 4 in. Blade 30c postage 6c

BRASS WATER INTAKE SCOOPS

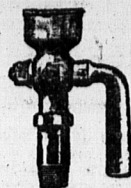
1/2 pipe size with locknut, each \$2.00
3/4 pipe size with locknut, each \$2.50
Postage each 10c

ENGINE SUCTION HOSE, HIGH GRADE

1/2 in. per foot 25c
3/4 in. per foot 30c
1 in. per foot 35c
1 1/4 in. per foot 50c
1 1/2 in. per foot 70c
1 3/4 in. per foot 85c

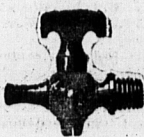
Auto and Gas Engine Oils and Grease

Large stock on hand for immediate shipment. Special prices in barrels or cases.
Buy the correct grade of Mobil Oil for your engine.
Mobil A. B. E. Arctic 1 gall. cans \$2.00
Mobil A and B. on draft per gall. \$1.75
Polarine light 1 gall. cans \$1.50
Polarine heavy 1 gall. cans \$1.50
Polarine, 4 gall. cans \$5.20
Polarine heavy and light on draft per gall. \$1.20
Polarine cup grease 1 lb. cans 25c
Arctic cup grease 1 lb. cans 25c



Priming Cups

1/4 inch straight 65c
1/4 inch straight 75c
1/4 inch angle 85c
1/4 inch angle \$1.00
Postage each 5c.



Drain Cocks

1/4 inch 40c
1/2 inch 45c
Postage 2 cents



Ball Thrust Bearing

Hardened Steel Balls in steel cage.
1 1/4 1 1/4 1 9/16 1 3/4
\$1.50 \$2.00 \$2.50 \$2.75
Price of other sizes on application.
Postage each 10c.



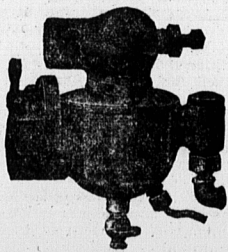
Copper Gasoline Tubing and Connectors

1/4" O. D. per ft. 20c
5-16 O. D. per ft. 25c
68 F. Connector 1/4" 20c
68 F. Connector 5-16" 25c
62 F. Union 1/4" 25c
62 F. Union 5-16" 30c
60 F. Sleeve 1/4-5-16 03c
61 F. Nut 1/4-5-16 07c



Check Valves

For Two Cycle Engines.
3/4 in. 1 in. 1 1/4 in. 1 1/2 in.
\$3.50 \$4.00 \$4.50 \$5.00
Postage 14c each

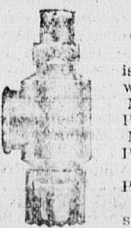


Schebler Carburetors

All parts of Schebler Carburetor carried in stock
The World's Standard
1 in. 1 1/4 in. 1 1/2 in.
\$20.00 \$20.00 \$24.00

Gas Engine Packing

Asbestos Cloth, per sq. ft. 70c
Compressed Asbestos Fibre, per sq. ft. 1-32" thick 50c
Compressed Asbestos Fibre per sq. ft. 1-16" thick 90c
Asbestos paper, per sq. ft. 05
1/4" Flax stuffing box packing per ft. 05c
Pump packing per ft. 03c



EJECTORS or Steam Jet Pump

Just the thing for lobster factories where steam is used. Will lift water 20 to 25 ft. Use it for washing down. With salt or fresh water.
No. 2 Steam conn. 1/2" section and delivery 3/4"
Price \$5.50
No. 3 Steam conn. 3/4" section and delivery 1"
Price \$8.25
No. 4 Steam conn. 1" section and delivery 1 1/2"
Price \$11.00
Capacity 500 to 1000 gals per hr. with 65 lbs. steam.



LaFrance No 3 Fire Extinguisher

Every farm house, mill, factory, garage, motor boat or auto should have one or more La France extinguishers ready for instant use. Operates like a pump throws steam 30 to 40 feet.

La France Solution does not deteriorate. Does not freeze at 50 below zero. Does not conduct electricity. Forms a dense blanket of gas that smothers the fire.

Length over all 15 dia. 3 in wt. 7 1/2 lbs. Holds an IMPERIAL Quart Legal Measure, complete with wall bracket \$12.00
Price solution per quart \$2.00

SEND FOR CIRCULAR.



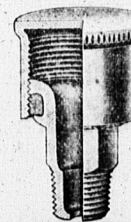
Penberthy SILEX Grease Cups

No. 901 1 1/4" dia Inside 1/4" pipe thd. price \$1.95
No. 902 1 1/2" dia Inside 1/4" pipe thd price \$2.25
No. 903 1 3/4" dia Inside 3/8" pipe thd price \$2.60
No. 904 2" dia Inside 3/8" pipe thd price \$3.20
No. 905 2 1/4" dia Inside 3/8" pipe thd price \$3.75

Automatic Spring Compression feed.

SAMPSON T. HANDLE GREASE CUPS
Polished Brass, T. Handle Screw Plunger, a good cup at a moderate price.

If you want a real good cup for gasoline engines buy the Samson.
No. 802 1 1/2" dia Inside 1/4" pipe thd price \$2.25
No. 803 1 3/4" dia Inside 3/8" pipe thd price \$2.50
No. 804 2" dia Inside 3/8" pipe thd price \$3.20
No. 805 2 1/4" dia Inside 3/8" pipe thd price \$4.00
If you want a real good cup for gasoline engines buy the Samson.



Grease Cups

Solid Cast Brass Good Threads

No. 1-1/4" male Thread, 1 1/2 dia. outside. Price each 85c
No. 2-1/4" male Thread, 2 dia. outside. Price \$1.00



OIL CUPS

Short stop with brass shell to protect
Class. Dia. Height Size Price
No. Class Glass Thread
202 1 1/4 1 1/2 3/8 \$2.50
203 2 1 1/2 3/8 \$2.70
204 2 1/4 2 1/2 3/8 \$3.10

Sultan

Gas engine cylinder oiler with check valve. Price
652 1 1/4 1 1/2 \$2.80
653 2 1 1/2 \$3.00
654 2 1/4 2 1/2 \$3.80
655 2 1/2 2 1/2 \$4.20
Extra Glasses 1 1/4 x 1 1/2 30c
Extra Glasses 2 x 1 1/2 35c
Extra Glasses 2 1/4 x 2 1/2 40c
Extra Glasses 2 1/2 x 2 1/2 45c



COMPODISK

GLOBE AND ANGLE VALVES HIGH GRADE RENEWABLE DISC.

1 1/2 1 1/4 1 3/8 1 1/2 1 1 1/4 1 1/2 2
\$1.55 1.55 1.75 2.25 3.10 3.90 5.60 7.70 12.25

EXTRA DISCS.

3/4 1/4 3/8 1/2 3/4 1 1 1/4 1 1/2 2
6 6 8 8 10 12 18 24 26

SWING CHECK VALVES

1/4 3/8 1/2 3/4 1 1 1/4 1 1/2 2
\$1.85 \$1.85 \$1.95 \$2.60 \$3.35 \$4.85 \$6.40 \$9.35

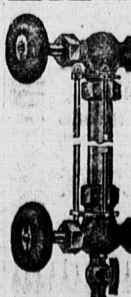


HORIZONTAL REGRINDING CHECK VALVES

for gasoline engine pumps.
Size 3/4 in. price \$1.80
Size 1/2 in. price \$1.95
Size 1 in. price \$2.85
Size 1 1/4 in. price \$3.90
Size 1 1/2 in. price \$5.40

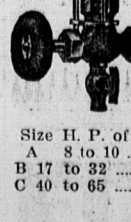
EXTRA DISCS AND GUIDES

3/8" Disc. 35 3/8" Guide 45
1/2" Disc. 40 1/2" Guide 50
3/4" Disc. 50 3/4" Guide 60
1" Disc. 70 1" Guide 70
1 1/4" Disc. 80 1 1/4" Guide 80



BRASS GAGE OR TRY COCKS

Water glass fittings with glass guards. Iron wheels
84 A 1/2 in. pipe. No. 8 1/2 polished with wood wheel each \$3.50
No. 3 1/2 rough with iron wheel \$1.10
No. 8 1/2 polished with wood wheel \$1.55



Injectors

Size H. P. of Boiler Size Price
A 8 to 10 1/2 \$10.25
B 17 to 32 3/4 \$14.25
C 40 to 65 1 \$22.80

PARTS

Steam Jet A. B. C
Suction Jet 50 60 75
Delivery Jet 2.10 2.80 3.50
Coupling Nut 40 55 70
Tail Piece 40 55 70
Overflow Cap 55 70 85
Overflow Valves 70 85 1.00
Overflow Hinge 15 20 20
Plug 1.10 1.40 1.75
Strainer 65 70 75