

MACDONALD'S

tobaccos are plainly marked, the packages with the name **MACDONALD'S**, and the plugs with the well-known heart.

The Tobacco with a heart

27

EASTERN PERSONALS

..*Mr. Cannon, Summerside recently visited Georgetown.—A.

..*Miss Mirlam Johnson is visiting friends at Georgetown.—A.

..*Miss Bell Hemphill, Montague is visiting her home at Georgetown.—A.

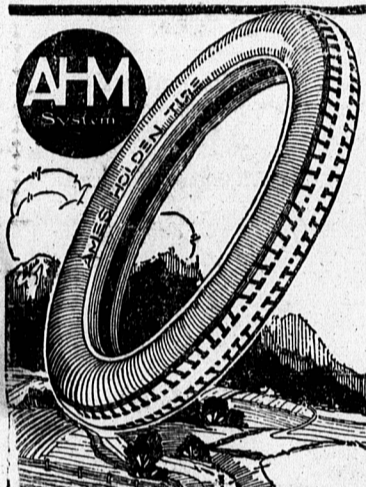
..*Miss Edna Gordon, Roseneath is visiting Mrs. L. H. Douglas, Georgetown.—A.

..*Mr. George Keenan who has been spending the winter in Boston has returned to his home at Georgetown.—A.

..*Mr. A. A. McDonald, Georgetown recently visited Souris.—A.

..*Mr. Eugene Delorie, New Port, recently visited in Georgetown.—A.

..*Mr. Francis Murphy, Montague is visiting Mr. Jack Fitzgerald in Georgetown.—A.



"Auto-Shoes" Mean Mileage

The mileage given by the best tire you ever used would just about approximate the average given by Ames Holden "Auto-Shoes" year after year.

Ames Holden "Auto-Shoes" are miles better than ordinary tires. The name "Auto-Shoes" is to help you to remember that—to make it easy for you to get the cheapest mileage you can buy.

AMES HOLDEN "AUTO-SHOES"

Cord and Fabric Tires in all Standard Sizes

For Sale By

- | | | | |
|------------------------|---------------------|-------------------------------|---------------|
| J. H. MYRICK | Alberton | J. J. HUGHES & CO., LIMITED | Souris |
| A. W. McLAREN | Belle River | CAMPBELL & MCKENZIE SOURIS | |
| R. J. McDONALD & SON | Cardigan | GARAGE CO | |
| LORDS COMPANY | Cape Traverse | C. A. STEWART | Souris |
| R. H. CAMERON & Co. | Crapaud | CORNEY BROS | Summerside |
| J. A. CUTLIFFE & SON | Fredericton Station | H. A. BERNARD | Tigniah |
| J. J. HUGHES CO., LTD. | Georgetown | C. I. LIDSTONE | Tyne Valley |
| H. G. NELSON | Hampton | THOMAS McNEILL | Tryon |
| P. J. NOY & CO | Hunter River | CAMPBELL & GILLIS | Uigg Station |
| JENKINS BROS. | Millview | FARMERS UNION CO-OP. Sec Ltd. | Wellington |
| W. J. McEACHERN | Mount Albion | KENNEDY BROS | Kensington |
| McDONALD & SON | Murray River | R. TUPLIN & CO. | Morell |
| H. M. CHISHOLM | North Tryon | H. M. COX | Morell |
| W. A. DENNIS & SON | O'Leary | THE MORELL GARAGE CO. | Charlottetown |
| ELMER SHARBELL | Portage | CENTRAL GARAGE | Charlottetown |
| ARSENEAU & GAUDET | Richmond | QUEENS COUNTY GARAGE CO. | |

Western Guardian

..*MONTAGUE TEA PARTY, Wednesday June, 22nd.

..*THE LEAGUE, is doing some thing, see Montague on June 22nd.

..*MATINEE RACES for Country horses only, Riverside Park, Vernon July 1st.

..*WELCOME VISITOR.— Congratulations to Mr. and Mrs. J. C. Goteff on the arrival of a baby girl.—A.

..*SPECIALS—Mens work shirts at 98 cts. Socks 4 pair for \$1. Neck ties 50 cts each. Soft felt hats \$2. 95. Ives and Murdoch, Ltd.

..*DRAMA—See the four act comic drama, "The Fisherman's Luck," Oddfellows Hall, Montague, Friday evening, June 10th.

..*MONTAGUE IS THE PLACE where they have the big crowds, and the good times. We'll all be there on the 22nd June. Long time since they had a Tea, and we'll bet it will be a hummer this time.

..*SEE THE COMIC DRAMA "The Fisherman's Luck", put on by the Vernon Dramatic Club, Oddfellows Hall, Montague Friday evening June 10th. Under auspices Community Welfare League Ltd. Get your tickets early.

..*JUNE SPECIALS—Gray Cotton from 8 cts a yard up, 36 inch silk for \$1. a yard. 50 inch serge for \$1. a yard. Ladies black hose at 25 cts per pair are amongst our specials for June. See them at Ives & Murdoch, Ltd.

..*STAKE RACES.—Don't forget \$3.00 will pay for a nomination in the Montague Stake Races which close on Saturday, June 11th. 2.17 —2.20 class mixed. 2.30 trot and 2.25 pace. T. G. Ives, Secretary.

..*THE GEORGETOWN SUNDAY School Association will meet in the Valleyfield Presbyterian Church, June 13th, afternoon and evening sessions. Rev. F. M. Milligan of Halifax will be present.

..*IMPORTANT—Get your ticket early for the big show, Oddfellows Hall, Montague, Friday evening, June 10th. Staged by the Vernon Dramatic Club under the auspices of the Montague Community Welfare League, Ltd.

..*MONTAGUE HORSE RACES Wednesday, August 10th, 1921. Classes 2.17 trot and 2.20 pace, 2.40 (straight trot, 2.25 straight pace. Purses \$300.00 in each; All stakes. Nomination close Saturday, June 11th, when 1 per cent is due. Mail your entries early to the Secretary.

..*CHURCH NOTICE—St Andrew's Church, Montague, Sunday, June 12th. Rev. J. Dugald MacKenzie will preach at both services and by request will sing. At the evening service the third sermon on "Honest Doubt" will be delivered.

..*BETTER HURRY.—Say Peter did you mail your entry to Ives Montague for their stake races to be held there on August 10th? Saturday is the last day to nominate an entry. Suppose Hammond will be there again with an entry in each class as usual. He'll have lots of company this year. We'll make him go home; won't we? Hurrah for dear old Montague.

..*PLAY ENJOYED.—The Varsity Troupe of Kings College scored a big success at Georgetown. They played to a packed house and the audience were unanimous in their opinion that it was the best play they had seen in Georgetown for some time. The vaudeville between the acts as usual did not fail to produce laughter and applause. Mr. Wilbert Avery's exquisite performance on the violin was repeatedly encored.—A.

..*Mr John J. Clark, Annandale visited friends at Georgetown this week.—A.

Miss Isabel McPhee who has been visiting friends at Charlottetown has returned to her home at Georgetown.—A.

..*THE OLD RELIABLE. TRY IT! Minard's Liniment Co., Ltd., Yarmouth, N. S.



YARMOUTH, N. S. FISHERMEN AND CAMPERS QUICK RELIEF PUT A BOTTLE IN YOUR OUTFIT

H. J. MABON

Optometrist
EYES EXAMINED
GLASSES FITTED
Montague, P. E. I.
Graduate of Canadian Ophthalmic College, Toronto and other post graduate courses. Exclusive Test Room connected with Drug Store.

EXTRA PANTS

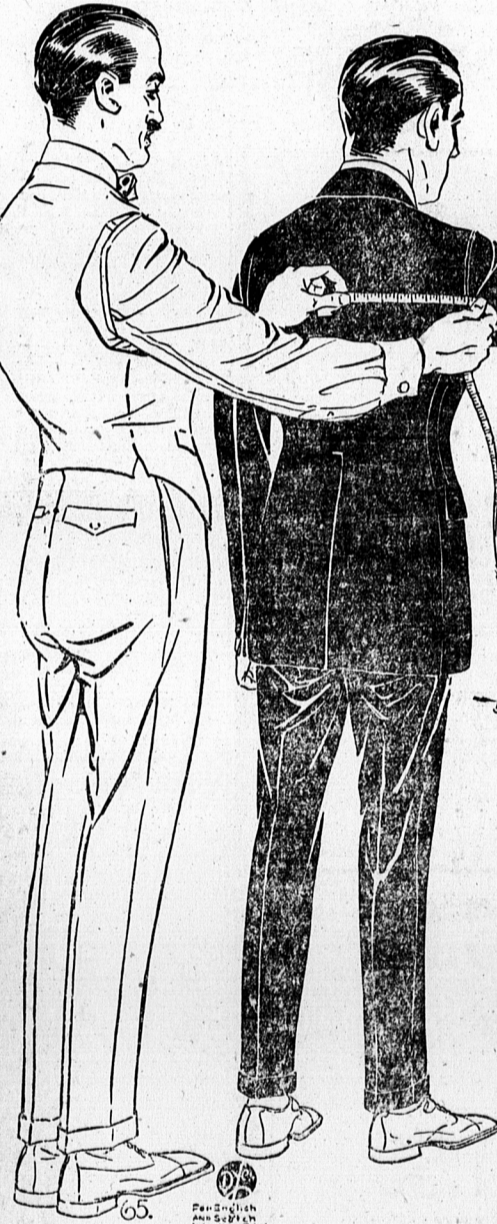
WITHOUT ADDITIONAL CHARGE

Values In Tailored-To-Measure Clothes That Stand "Right-Out"

And Proclaim Themselves "World-Beaters"

If you have a friend who knows good fabrics, get him to visit one of our 42 Quality Tailor Shops with you. He will be amazed at the quality of the cloth we offer in Suits and Overcoats Tailored-to-Measure. He will confirm our statement that nowhere can you get similar quality at anywhere near our Known Standardized Prices.

Our big value only begins with the superior fabric quality. There is the master tailoring and the designing of your garment, the fit, style and finish—only at our big tailoring headquarters, where big things are done in a big way, can you get so much value at so small a price.



Suits and Overcoats Tailored-To-Your-Measure

\$20

English and Scotch Woollen Co. of Montreal

More Quality Less Money

NO CONNECTION WITH ANY OTHER CONCERN IN CANADA

WE are thoroughly honest in saying that we do not believe our fabric values in Suits and Overcoats, with Extra Pants without additional charge, can be matched anywhere at less than double our Known Prices. We are making the comparison on the basis of this year's valuations, not with the price obtained by many last year.

Let us further emphasize in saying that without the Extra Pants we give with every Suit or Overcoat, without additional charge, that you are being offered the greatest bargain in Tailored-to-Measure Clothes in the history of this organization. Visit one of our 42 Quality Tailor Shops today and let us take your measure.

LADIES—Do you want good quality materials for your new dress or suit? We have thousands of yards to be sold as low as \$2.75 per yard. This is 1/2 regular price, width 54 and 56 inches. This is an exceptional opportunity to get materials of better quality than is usually found in women's fabrics. Take care of the children's needs.

TROUSERS—We are showing exceptional values in odd trousers from special trouser lengths. Many of these outfits are shown in very limited quantities, and are exceptional values.

English & Scotch Woollen Co.

OF MONTREAL

158 Richmond St. Charlottetown, P. E. I.

The Big Montreal Tailors With the \$20 Price — Stores From Coast to Coast
42 QUALITY TAILOR SHOPS IN CANADA
Head Office and Bonded Warehouse, 851 St. Catherine Street East, Montreal

Out-of-Town Men Write for Free Samples, Fashion Plates, Self-Measure Form and Tape Line. Address 851 St. Catherine St. East, Montreal.

Is YOUR Friend in Holman's Prize Election Contest?

IF YOUR FRIEND IS IN HOLMAN'S PRIZE ELECTION CONTEST, WORK FOR HER, VOTE FOR HER, HELP HER WIN. The rich prize that she may win will mean all the more to you, as it would be through the help of you and other friends that it was won.

THE LIVEST, MOST PROGRESSIVE, AND MOST POPULAR PEOPLE IN THE PROVINCE ARE AMONG THE CANDIDATES IN THIS CONTEST

They deserve your support and to help them win some of the eighty-one prizes offered in the contest you do not have to spend a penny needlessly—but you may save many dollars on all your more important purchases.

Ask the candidate in your district about the special bargains that are being offered. Remember the first dollar purchase counts as a hundred votes and every cent over that amount is worth a vote each.

VOTE EARLY AND OFTEN FOR YOUR FRIENDS
R. T. Holman Ltd., Summerside