

NOW ON SALE

at your grocers

LYNCH'S CREAMALT BREAD

Mention it in your next order

MR SELLER, Agent

King's Square Charlottetown 6-27dmywff.

Good Morning

Is there anything you require in the grocery line? If so, try the King Square Grocery

Quality the best. Large stock to choose from. Prompt delivery to all parts of the city and country. Telephone 61. Orders called for.

H. M. SELLER
King Square.
6-27dmywff.

PLANT LINE

Direct Route to Boston

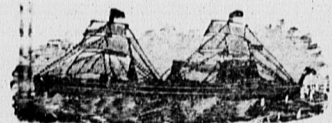
—FARES—

First Class..... \$ 10.00
Second Class..... 8.00
Return, First Class..... 18.00
Commencing 24th June, S. HALIFAX leaves Charlottetown every Friday at noon for HAWKESBURY, HALIFAX and BOSTON. Returning leaves BOSTON Tuesdays at noon.

T. NICOLL

Agent, Charlottetown.

Black Diamond Line



The freight and passenger steamer "Rosallid" will sail from Montreal Saturday noon, July 16th, for Charlottetown direct. She will be due here at 12 o'clock midnight, Monday, July 18th, and Tuesday noon, July 19th, sails for St. John's, Newfoundland, via Sydney, C. B., carrying freight and passengers at lowest possible rates. For further particulars apply to PEAKE BROS. & CO., Agents.

Rothsay Collegiate School

ROTHSAY, N. B.

A first class boarding school for boys, situated nine miles from St. John's, N. B. Boys prepared for the universities or for business. Special attention given to little boys, for whom there is a separate building. Excellent equipment including a

Manual Training Department

Five resident masters. For prospectus, etc., apply to

Rev. W. R. Hibbard M. A.,

Headmaster

7-16dmywff till Sept. 10

Read This Carefully

The eye is the most delicate complex organ of the body yet no part of the physical system suffers greater neglect and carelessness than its character has been imperfectly understood until recently even by scientists. Ages of ignorance have developed a large breed of popular superstitions, morbid whims and prejudices; these never people from having their eyes carefully tested and fitted but prejudices and ignorance are yielding to the progress of science for the sake of the travelling public. An engineer is no longer qualified to take control of a locomotive till his eyes have been examined and pronounced free from any blindness. For their own comfort as well as the preservation of their sight all adults should secure repeated tests of vision as age advances to prevent serious injury and possible ruin of their sight. All children's eyes should be examined especially at the time of entering school. We expect to see the time when this will become as compulsory as vaccinating school children and with great reason. Dr. E. M. Crossman Eye Specialist 10 Kent St. opp. Revere Hotel Charlottetown Telephone 31 J 6-27dmywff

Here Are the Prizes You Can Win

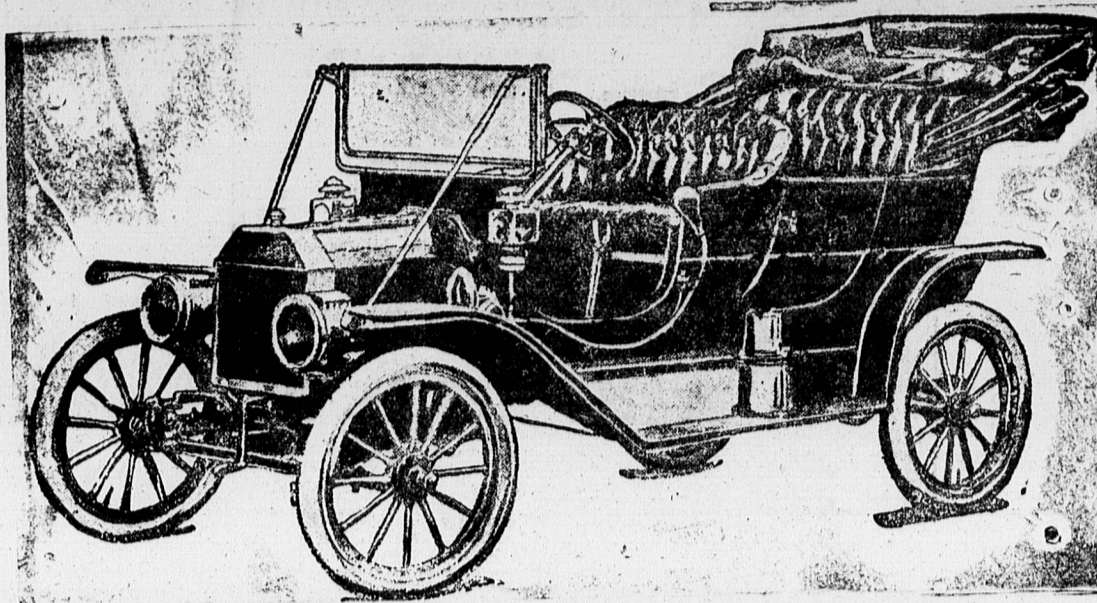
Why and Wherefore

The Charlottetown Guardian, The Halifax Herald and The Evening Mail is taking an especial pride in this gigantic subscription campaign. Over Eleven Thousand Dollars in prizes are to be given away immediately following the close of this contest. The plan we have adopted is the fairest and most impartial imaginable. In this contest everyone has an opportunity to win. It is a legitimate competitive proposition, in which personal effort and perseverance are bound to count.

This contest is run for the very simple reason to increase the circulation of The Charlottetown Guardian, The Halifax Herald and The Evening Mail. To do this we are giving away many valuable prizes. In securing these prizes our first thought was to make them well worth the winning. In this we have succeeded. Who does not want a \$2,400 Russell Touring Car, a Ford Touring Car, a Motor Boat, or even one of the other prizes? This question is easily answered. Then the question arises, how can they be secured? We want you to understand the proposition, and it's an easy one, too. Come and see or write the Contest Manager. He will explain everything to you. The territory has been divided into THREE DISTRICTS, with separate prizes for each, and candidates in each district only compete among themselves for the prizes in their respective district, while all candidates have an equal chance to win the Grand Capital Prize.

Clubbing arrangements have been made with The Maritime Farmer, The Charlottetown Guardian and The St. John's, N.B., Evening Herald, whereby readers of these papers can enter the Contest and participate in the distribution of these splendid prizes.

Grand Capital Prize



\$2,400 RUSSELL TOURING CAR

Purchased from The Canada Cycle & Motor Co. Montreal.

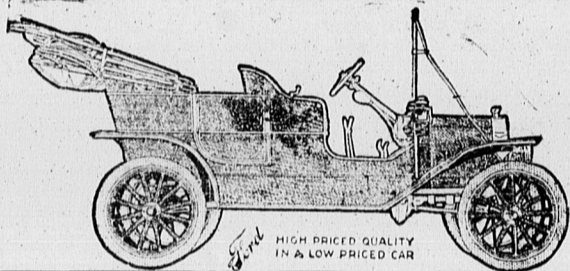
Specifications

RUSSELL "30" FIVE PASSENGER—MODEL R. ENGINE—30 h. p. R. A. C. rating vertical four-cylinder, 4 1/2 in. x 4 1/2 in. Cylinder cast in pairs, water jacket and valve chambers integral. IGNITION—Batteries with magneto, one set of spark plugs and cable required. High tension distributor common to both systems. Either unit employed through use of double throw switch. VALVES—Mechanically operated. CARBURETOR—Automatic float feed. LUBRICATION—Positively driven force feed and splash. FUEL SUPPLY—Capacity of tank, 16 gallons. FRAME—Pressed steel, inswapt at front to give short turning—upswept at rear to give low centre of gravity with ample clearance. STRINGS—1 elliptic in front; 1 elliptic in rear. CLUTCH—Metal to Metal disc, fitted with cork inserts. COOLING—Water from Centrifugal Pump and forced draft from fan, honeycomb radiator of ample dimensions. DRIVE—Shaft drive, selective transmission, 3 speeds and reverse. BRAKES—Double set, foot brake and emergency hand brake on rear wheels. FRONT AXLE—Single drop forging, I beam section. REAR AXLE—Full floating type. WHEELS—Wood, with universal rims same size front and rear. TIRES—Front 34 in. x 3 1/2; rear 35 in. x 4 in.; interchangeable on front or rear wheels as rims are the same. BEARINGS—Imported annular ball bearings throughout. STEERING—Worm and gear type, irreversible, easily detached from car. CONTROL—Spark and throttle levers above steering wheel; foot pedals and hand levers close to driver. COLOR—Royal blue body, blue running gear, black leather upholstery. EQUIPMENT—Hand horn and attachments, two side and one tail brass oil lamps; two head lamps and generator; full kit of tools; repair kit; pump.

Halifax Motor Car Co., Halifax, Agents.

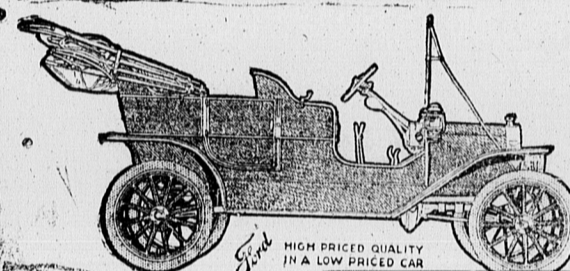
Charlottetown District

First Grand Prize in District No. 1



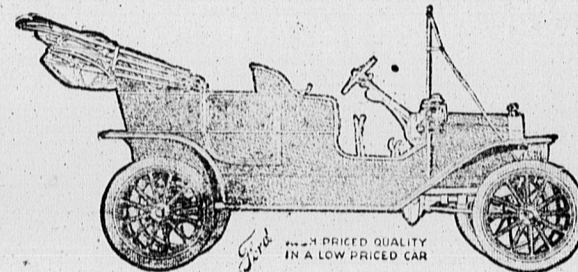
\$1250 FORD TOURING CAR

First Grand Prize in District No. 2



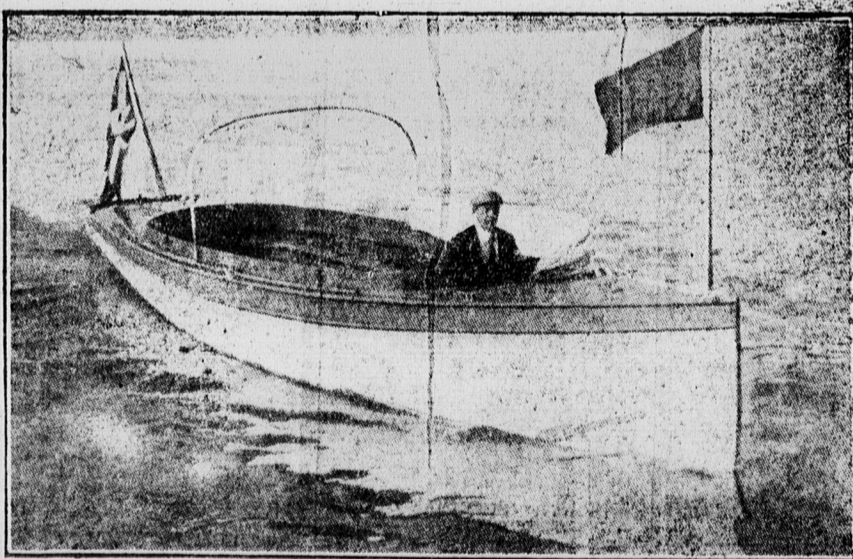
\$1250 FORD TOURING CAR

First Grand Prize in District No. 3



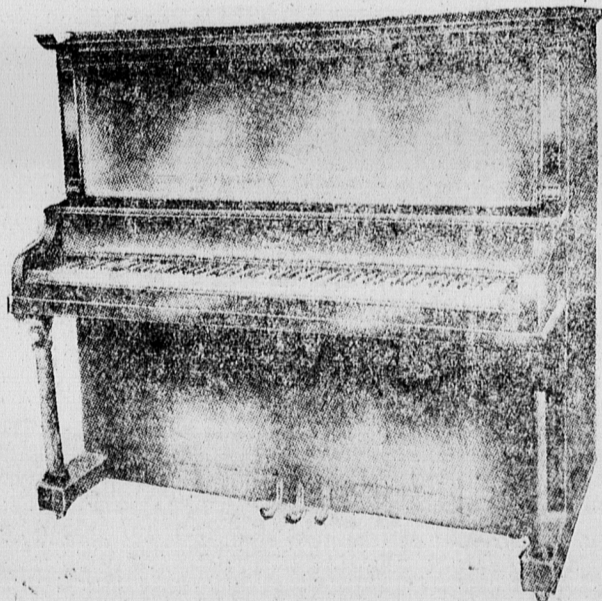
\$1250 FORD TOURING CAR

Second Grand Prize in Each District



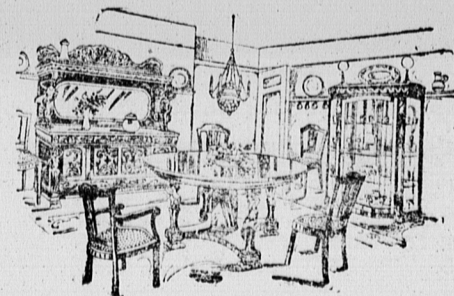
One Motor Boat \$800, Two \$400 Each

Third Grand Prize in Each District



\$400 UPRIGHT PIANO

Fourth Grand Prize in Each District



\$200 Suit of Furniture

DISTRICT PRIZES

Three Diamond Rings

Three Bicycles

Three Cameras

Three Cream Separators

Three Gramophones

Three Kitchen Cabinets

Three Canoes

Three Steel Ranges

This Contest is for You----Fill Out a Nomination Blank and Enter To-day

Phone 1956, or Address All Communications to
CONTEST DEPARTMENT, Halifax Herald, HALIFAX, N. S.